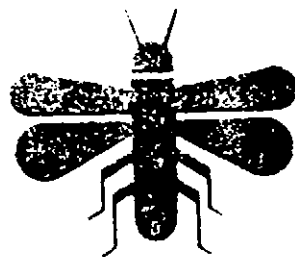


Rockland

Wasp & Yellow Jacket Bomb



- A Synthetic Pyrethroid
- Killing and crawling insects: Yellow Jackets, Bees, and other insects
- Jet Stream up to 12 foot Range
- Dielectric Strength - Non-Conducting up to 26,500 volts.

ACTIVE INGREDIENTS:

***Rasmethrin[5-(phenylmethyl-3-furyl) ethyl-2,2-dimethyl-3-(2-methyl-1-propenyl) cyclopropanecarboxylate]	0.250% w/w
Petroleum Distillate	11.375%
INERT INGREDIENTS	88.375%

Cis/trans isomers ratio: max. 30% (-trans)
 **U.S. Patent Nos. 3,466,007 and 3,422,928
 ***Penick-Bio UCLAF's SPB-1382 Brand of rasmethrin insecticide
 Penick-Bio UCLAF Corp., 1050 West 17th Street, Denver, CO 80202
 EPA Reg. No. 472-321

KEEP OUT OF REACH OF CHILDREN
CAUTION
 See back panel for additional precautionary statements.
 Net Weight 14 Oz.

PRECAUTIONARY STATEMENTS

HAZARD: IRRITANT. Irritation. Harmful if swallowed or absorbed through skin. Avoid breathing dust or mist. Avoid contact with eyes. Avoid contamination of clothing. Avoid contact with food. Avoid contamination of cooking utensils. Avoid contact with aquatic life. Remove pets and cover fish aquariums before use.

STATEMENT OF PRACTICAL TREATMENT

Wash exposed skin with plenty of water for at least 15 minutes. If irritation persists.

PHYSICAL & CHEMICAL HAZARDS

Flammable liquid. Do not use. DO NOT USE OR STORE NEAR HEAT OR OPEN FLAME. Explosion temperature above 130°F may cause bursting. Never throw container into fire.

DIRECTIONS FOR USE

Read and follow Federal Law to use this product in a manner that is consistent with the law. Use in homes, hotels, motels, homes, greenhouses, and lathouses. Use in commercial, industrial, office, institutional, and storage buildings, supermarkets, restaurants, bottling plants, boats, ships, and aircraft. Use in hospitals; patients should be removed prior to treatment. Avoid use in stables, barns, truck trailers, and ship cargo holds. Use in greenhouses, nurseries, and stables. Use for application of horses. Use in greenhouses.

Use in greenhouses, nurseries, and stables. Use for application of horses. Use in greenhouses.

Use in greenhouses, nurseries, and stables. Use for application of horses. Use in greenhouses.

Use in greenhouses, nurseries, and stables. Use for application of horses. Use in greenhouses.

Use in greenhouses, nurseries, and stables. Use for application of horses. Use in greenhouses.

Use in greenhouses, nurseries, and stables. Use for application of horses. Use in greenhouses.

Use in greenhouses, nurseries, and stables. Use for application of horses. Use in greenhouses.

Use in greenhouses, nurseries, and stables. Use for application of horses. Use in greenhouses.

Use in greenhouses, nurseries, and stables. Use for application of horses. Use in greenhouses.

Use in greenhouses, nurseries, and stables. Use for application of horses. Use in greenhouses.

Use in greenhouses, nurseries, and stables. Use for application of horses. Use in greenhouses.

Use in greenhouses, nurseries, and stables. Use for application of horses. Use in greenhouses.

Use in greenhouses, nurseries, and stables. Use for application of horses. Use in greenhouses.

Use in greenhouses, nurseries, and stables. Use for application of horses. Use in greenhouses.

Use in greenhouses, nurseries, and stables. Use for application of horses. Use in greenhouses.

Use in greenhouses, nurseries, and stables. Use for application of horses. Use in greenhouses.

Use in greenhouses, nurseries, and stables. Use for application of horses. Use in greenhouses.

Use in greenhouses, nurseries, and stables. Use for application of horses. Use in greenhouses.

Use in greenhouses, nurseries, and stables. Use for application of horses. Use in greenhouses.

Use in greenhouses, nurseries, and stables. Use for application of horses. Use in greenhouses.

Use in greenhouses, nurseries, and stables. Use for application of horses. Use in greenhouses.

Use in greenhouses, nurseries, and stables. Use for application of horses. Use in greenhouses.

Use in greenhouses, nurseries, and stables. Use for application of horses. Use in greenhouses.

Use in greenhouses, nurseries, and stables. Use for application of horses. Use in greenhouses.

Use in greenhouses, nurseries, and stables. Use for application of horses. Use in greenhouses.

Use in greenhouses, nurseries, and stables. Use for application of horses. Use in greenhouses.

Use in greenhouses, nurseries, and stables. Use for application of horses. Use in greenhouses.

Use in greenhouses, nurseries, and stables. Use for application of horses. Use in greenhouses.

ACCEPTED

JUL 31 1989

572-321



Rockland Chemical Co., Inc.

572-321
JUL 31 1989