

Camerasman's Note

Poor Copy

C-EM-DIE

TRADE MARK REGISTERED

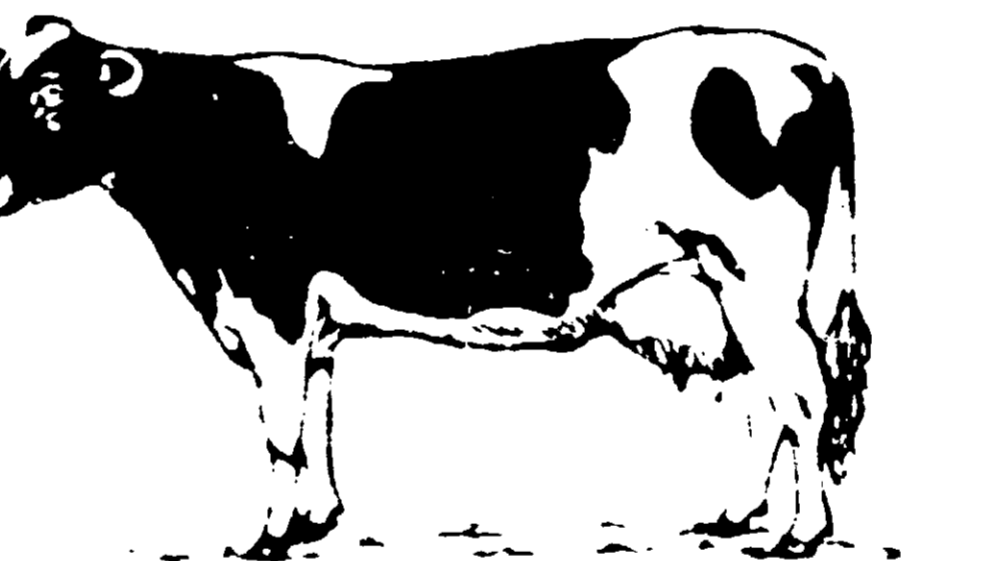
DAIRY, LIVESTOCK & BARN Contact and Space Spray

WITH QUICK KNOCKDOWN AND KILL CHEMICALS

~~Kills STABLE FLIES, HOUSE FLIES, HOUSE FLIES~~

MOSQUITOES AND CHICKEN MITES - WHEN USED AS DIRECTED

NO FLIES ARE RESISTANT TO IT



100% ACTIVE INGREDIENTS

Petroleum Distillate	99.14%
* Technical Piperonyl Butoxide	0.21%
2,2-dichlorovinyl dimethyl phosphate	0.230%
Related compounds	0.020%
Pyrethrins	0.04%
* Equivalent to 222's butylcarbitol (6-propylphosphoryl) ether and 0565 related compounds	

CAUTION: KEEP OUT OF REACH OF CHILDREN

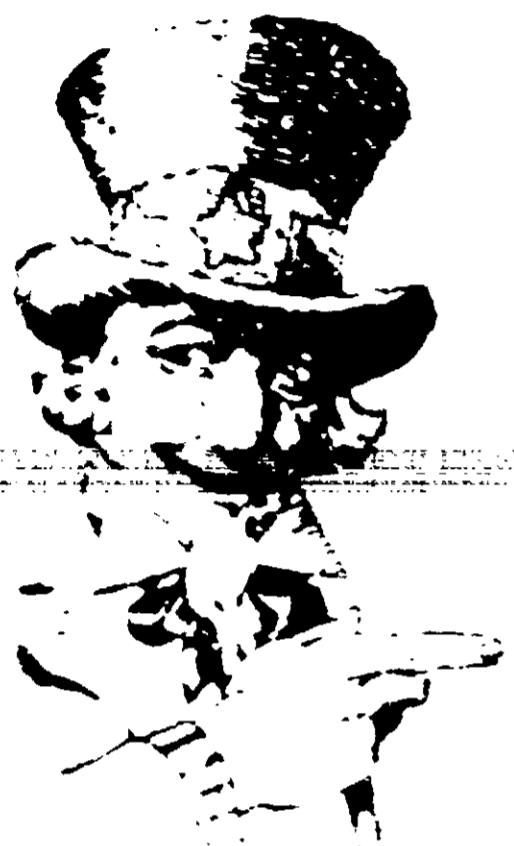
SEE BACK PANEL FOR ADDITIONAL INFORMATION

MANUFACTURED BY

ROCKLAND CHEMICAL CO., INC.

PASSAIC AVE., WEST CALDWELL, N.J.

NET CONTENTS: ONE U.S. GALLON



EFFECTIVE
AGAINST
FLIES,
MOSQUITOES

ACCEPTED
APR 14 1975
Under the Federal Insecticide,
Fungicide, and Rodenticide Act,
as amended, for the pesticide
registered under
EPA Reg. No. 572-246



C-EM-DIE Dairy
This product will

Spray on walls,
about one foot
spraying to avoid

CATTLE, CALVES,
houseflies, mosquito
when necessary. N
young animals
directly by spray.

CHICKEN MITES:
and crevices and of
controlling mites.
and house thorough

BARN SPRAY: Use
Flies, House Flies a
fine, even spray. Do
using 2 ounces of r
when possible for 10

EFFECTIVE
AGAINST
FLIES,
MOSQUITOES

CAUTION: Do not
through the skin. V
Do not contaminate
Avoid wetting the h
Do not reuse empt

WARRANTY: Seller
other than indicate
such use and/or han

EPA Reg. No. 572
EPA Est. 572 NJ

C-EM-DIE

DIE

ERED
K & BARN
ace Spray

D KILL CHEMICALS

WHEN USED AS DIRECTED
TANT TO IT



REDIENTS

99.14%
0.21%
0.230%
0.020%
0.014%

opoliphenyl

ACH OF CHILDREN

ONA

ED BY

ICAL CO., INC.
CALDWELL, N. J.

L. J. GALLON



EFFECTIVE
AGAINST
FLIES,
MOSQUITOES

C-EM-DIE Dairy & Barn Spray is a special formulation compounded primarily for the dairy industry. This product will not destroy the metal of any sprayer; no waste or sediment in can.

DIRECTIONS FOR USE - FOLLOW THOROUGHLY

Spray on walls, ceilings, pens, posts, stalls, windows, doors, where flies congregate, holding sprayer about one foot from surface being sprayed and close doors and windows for 10 minutes when spraying to avoid draft, waste and obtain better results.

CATTLE, CALVES, HOGS, PIGS: Spray animals with a fine mist at least once a day to kill horn flies, houseflies, mosquitoes. DAIRY CATTLE - for killing these flies, spray lightly at milking time and only when necessary. No more than 2 ounces of spray should be applied per animal per application. For young animals, apply no more than one ounce per animal as a spray. Ticks to be killed must be hit directly by spray.

CHICKEN MITES: Spray roosts, empty nests before spraying, paying particular attention to all cracks and crevices and other hidden places. Thoroughly clean the premises before spraying as this will help in controlling mites. Repeat application in about 2 weeks if necessary. Spray entire interior of the barn and house thoroughly.

BARN SPRAY: Use C-EM-DIE in barns, milk houses, outbuildings, pens for effective control of house flies, House Flies and Horn Flies. Use power or compressed air sprayer, if preferred, that throws a fine, even spray. Direct the mist toward the upper portion of the enclosure, filling the air with fine mist using 2 ounces of mist per 1000 cubic feet of air space. For best results keep doors and windows closed when possible for 10 minutes after application and during spraying.

CAUTION: Do not spray near or toward open flame. Harmful if swallowed, inhaled or absorbed through the skin. Wash thoroughly with soap and water after handling and before eating or smoking. Do not contaminate feed or food. Avoid breathing of spray mist. Avoid wetting the hides of animals. Do not reuse empty container. Destroy by perforating or crushing. Bury or discard in a safe place.

WARRANTY: Seller makes no warranty, expressed or implied, concerning the use of this product other than indicated on the label. Buyer assumes all risk of use and/or handling of this material when such use and/or handling is contrary to label instructions.

EPA Reg. No. 572-246

EPA Est. 572-NJ-1



EFFECTIVE AGAINST FLIES, MOSQUITOES

Cameraman's Note
Poor Copy

C-EM-DIE Dairy & Barn Spray is a special formulation compounded primarily for the dairy industry. This product will not destroy the metal of any sprayer; no waste or sediment in can.

DIRECTIONS FOR USE - FOLLOW THOROUGHLY

Spray on walls, ceilings, pens, posts, stalls, windows, doors, where flies congregate, holding sprayer about one foot from surface being sprayed and close doors and windows for 10 minutes when spraying to avoid draft, waste and obtain better results.

CATTLE, CALVES, HOGS, PIGS: Spray animals with a fine mist at least once a day to kill horn flies, houseflies, mosquitoes. **DAIRY CATTLE** - for killing these flies, spray lightly at milking time and only when necessary. No more than 2 ounces of spray should be applied per animal per application. For young animals, apply no more than one ounce per animal as a spray. Tabanids to be killed must be hit directly by spray.

CHICKEN MITES: Spray roosts, empty nests before spraying, paying particular attention to all cracks and crevices and other hidden places. Thoroughly clean the premises before spraying as this will help in controlling mites. Repeat application in about 2 weeks if necessary. Spray entire interior of the coop and house thoroughly.

BARN SPRAY: Use C-EM-DIE in barns, milk houses, outbuildings, pens for effective control of stable flies, House Flies and Horn Flies. Use power or compressed air sprayer, if preferred, that throws a fine, even spray. Direct the mist toward the upper portion of the enclosure, filling the air with fine mist using 2 ounces of mist per 1000 cubic feet of air space. For best results keep doors and windows closed when possible for 10 minutes after application and during spraying.

CAUTION: Do not spray near or toward open flame. Harmful if swallowed, inhaled or absorbed through the skin. Wash thoroughly with soap and water after handling and before eating or smoking. Do not contaminate feed or food. Avoid breathing of spray mist. Avoid wetting the hides of animals. Do not reuse empty container. Destroy by perforating or crushing. Bury or discard in a safe place.

WARRANTY: Seller makes no warranty, expressed or implied, concerning the use of this product other than indicated on the label. Buyer assumes all risk of use and or handling of this material when such use and/or handling is contrary to label instructions.

EPA Reg. No. 572-246

EPA Est. 572-NJ-1