



PM 17 1/2
572-230
1-24-90

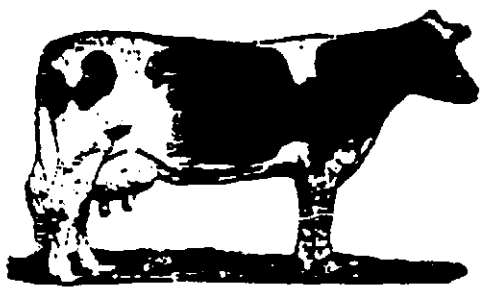
Not Reviewed. Registrant claims to be in accordance with Reregistration of Pesticide Product Guidance for Phase 2 Response, Page 2.12, Active to Inert Change in Status.

® **ROCKLAND**

Kleen-Kow

FLY-SPRAY

REPELLENTS ADDED



REG. U. S. PAT. OFF.

KILLS AND REPELS STABLE AND HORN FLIES

KEEP OUT OF REACH OF CHILDREN
CAUTION

SEE SIDE PANEL FOR ADDITIONAL PRECAUTIONARY STATEMENTS.

ACTIVE INGREDIENTS:

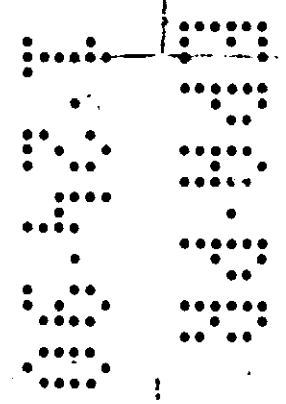
Di-N-propyl isocinchomerate.....	0.40%
N-Octyl Bicycloheptene Dicarboximide.....	0.20%
Technical Piperonyl Butoxide.....	0.10%
Pyrethrins.....	0.06%
*INERT INGREDIENTS.....	99.24%

*This product contains Petroleum Distillate. 100.00%

EPA REG. NO. 572-230 EST. NO. 572-NJ-1

NET CONTENTS GALLON(s)

Manufactured by
Rockland Chemical Co. Inc.



KILLS AND REPELS HORN FLIES, STABLE FLIES, MOXQUITOES AND GNATS. WHEN PROPERLY APPLIED, THE REPELLENT EFFECT AGAINST ABOVE INSECTS WILL LAST TWO DAYS.

PRECAUTIONARY STATEMENTS

HAZARDS TO HUMANS AND DOMESTIC ANIMALS: CAUTION. Harmful if swallowed, inhaled or absorbed through the skin. Avoid contact with skin. Wash thoroughly with soap and water after handling and before eating or smoking. Avoid prolonged breathing of spray mist. Do not contaminate milk or milk handling equipment. Wash udder and teats before milking. Do not contaminate feed, water, or mineral supplements with this spray.

STATEMENT OF PRACTICAL TREATMENT

IF SWALLOWED: Call a physician or Poison Control Center immediately. Gastric lavage is indicated if material was taken internally. DO NOT INDUCE VOMITING. Vomiting may cause aspiration pneumonia.

IF INHALED: Remove victim to fresh air. Apply artificial respiration if indicated.

IF ON SKIN: Remove contaminated clothing and wash affected areas with soap and water. Launder clothing before reuse.

IF IN EYES: Flush eyes with plenty of water. Get medical attention if irritation persists.

ENVIRONMENTAL HAZARDS: This product is toxic to fish, birds and other wildlife. Do not add directly to water. Do not contaminate water by cleaning of equipment or disposal of wastes.

PHYSICAL OR CHEMICAL HAZARDS: Do not use or store near heat or open flame.

STORAGE AND DISPOSAL

STORAGE: Store unused material, in original container only, in a locked storage area out of reach of children and animals. Keep container tightly closed. Do not contaminate water, food or feed by storage or disposal. Do not use, spill or store near heat or open flame.

DISPOSAL: ONE GALLON+ Do not reuse empty container. Securely wrap in several layers of newspaper and discard in trash. Rinse thoroughly before discarding in trash. FIVE GALLONS & LARGER - Triple rinse (or equivalent). Then offer for recycling or reconditioning, or, puncture and dispose of in a sanitary landfill or by other procedures approved by state and local authorities.

WARRANTY: Seller makes no warranty, expressed or implied, concerning the use of this product other than indicated on the label. Buyer assumes all risk of use and/or handling of this material when such use and/or handling is contrary to label instructions.

DIRECTIONS FOR USE

It is a violation of Federal Law to use this product in a manner inconsistent with its labeling.

Spray "KLEEN-KOW" before milking, starting from the front of the animal using not more than one to two ounces per animal as a mist. To develop a residual repellency to stable flies, horn flies, mosquitoes and gnats, spray as above to each animal for a three day period. Be certain spray covers legs, belly and shoulders. Do not exceed spraying 2 ounces daily per adult cow. Reduce dosage one half for younger animals. Spray in the same manner again after two days have elapsed and every second day thereafter or when insects again disturb the animal.

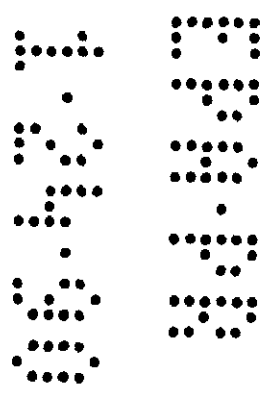
Avoid wetting the hides of animals. Do not apply regularly to calves under six months of age. ~~Brahman cattle should not be treated as they may show hypersensitivity to organic phosphates.~~

To kill flies, mosquitoes and gnats in the barn prior to milking, close all doors and windows and direct the spray toward the ceiling. After filling the barn with mist, it should remain closed for 10 to 20 minutes. Sweep up and destroy fallen insects. Repeat as necessary.

To protect livestock from attack by fleas, spray bedding and walls of pen, particularly cracks and crevices. Repeat treatment frequently until adequate control is obtained. For Fogging Machines *Kleen-Kow Fly* SPRAY can be used in a Fog Sprayer for killing house flies, stable flies and horn flies. Fogging will not give maximum repellency.

After animals are stanchioned, close barn doors and windows; spray until foggy using approximately 3 to 4 ounces per 1000 cubic feet. Keep barn closed for 10 minutes after spraying. Repeat fogging as often as necessary.

Do not spray on household pets or humans.



NET CONTENTS GALLONS