

12-2-12

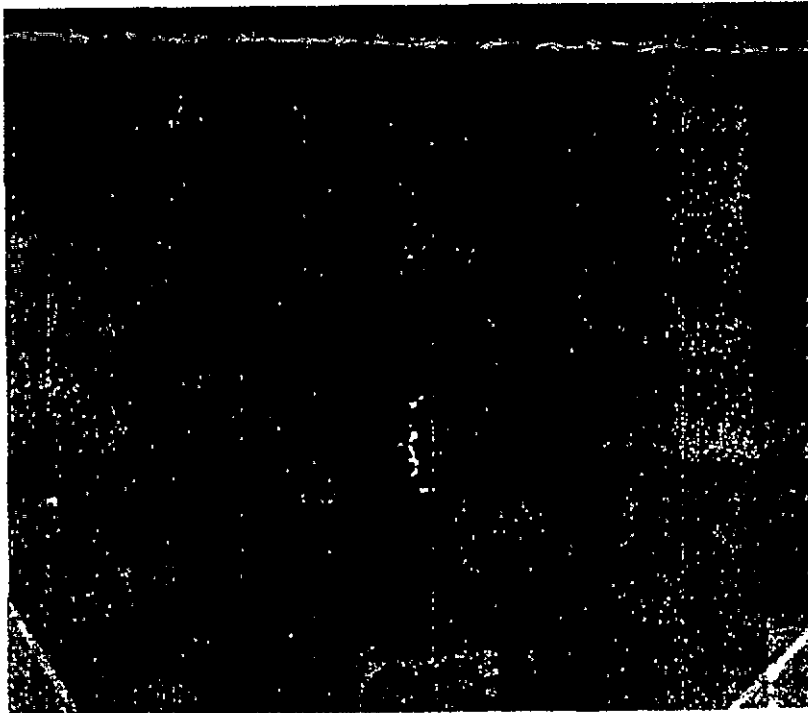
PM 25

557-2024

Page 192

Par'EX®

SLOW-RELEASE FERTILIZER plus Snow Mold Control



ACCEPTED
~~with COMMENTS~~
In EPA Letter Dated

NOV 13 1996

Under the Federal Insecticide,
Fungicide, and Rodenticide Act
as amended, for the pesticide
registered under EPA Reg. No.
557-2024

KEEP OUT OF REACH OF CHILDREN

• • • CAUTION • • •

BEST AVAILABLE COPY

For additional information, see back panel
Precautionary Statements, Hazards to Humans and Domestic Animals.

ACTIVE INGREDIENT:	
Pentachloronitrobenzene (PCNB).....	15.00%
INERT INGREDIENTS:.....	85.00%
TOTAL	100.00%

EPA Reg. No. 557-2024

EPA Est. No. 557-OH-1

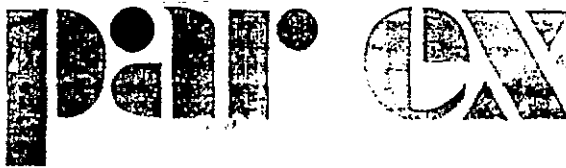
557-CO-1

557-CN-001



Par'EX® 12-2-12
THE EX STANDS FOR EXCELLENCE
NET WT. 50 LBS. (22.6kg)

292



SLOW RELEASE FERTILIZER plus Snow Mold Control contains Turfcide®

12-2-12

Guaranteed Analysis

Table with 2 columns: Component and Percentage. Includes Total Nitrogen (12.0%), Available Phosphate (2.0%), Soluble Potash (12.0%), Sulfur (10.5%), and Total Magnesium (1.0%).

Derived from elemental phosphate, sulfur coated urea, butylidene diurea, urea, sulfate of potash and sulfate of potash magnesium.

PRECAUTIONARY STATEMENTS HAZARDS TO HUMANS AND DOMESTIC ANIMALS CAUTION

Harmful if swallowed, inhaled or absorbed through the skin. Avoid breathing dust. This material may cause skin irritation. Avoid contact with eyes, skin or clothing.

PERSONAL PROTECTIVE EQUIPMENT

Applicators and Other Handlers Must Wear: A long-sleeved shirt and long pants; waterproof gloves; and shoes plus socks. Do not handle or apply product with bare hands.

USER SAFETY RECOMMENDATIONS

- Users should: Wash hands before eating, drinking, chewing gum, using tobacco or using the toilet. Remove clothing immediately if pesticide gets inside. Then wash thoroughly and put on clean clothing.

STATEMENT OF PRACTICAL TREATMENT

If in eyes: Flush with plenty of water. Get medical attention. If on skin: Wash with plenty of water. Get medical attention. If swallowed: Drink promptly a large quantity of milk, egg whites, gelatin solution or, if these are not available, drink large quantities of water.

ENVIRONMENTAL HAZARDS

This pesticide is toxic to fish and aquatic organisms. Cover, collect or incorporate spilled granules. Do not contaminate water when disposing of equipment washwater.

DIRECTIONS FOR USE

It is a violation of Federal Law to use this product in a manner inconsistent with its labeling. Not for use on plants being grown (1) for sale or other commercial use, (2) for commercial seed production, or (3) for research purposes.

GENERAL INFORMATION

This product is a preventative fungicide recommended for control of certain soil borne diseases of turf and certain ornamental crops. Best results are achieved when used in a preventative program following recommended rates and application directions.

LAWNS AND TURF

This product is a fungicide for the prevention and control of certain soil borne diseases on golf courses, home lawns and institutional areas where turf is grown. Best results are obtained when this product is used as a preventative application before diseases appear.

SUGGESTED SPREADER SETTINGS

Table with 2 columns: Spreader Make and Setting. Includes Vigoro Spreader (1), Cyclone (3), Scott RSA (1 Cone II), and Lesco (I).

These settings apply to 2240 mesh granular content. The spreader settings listed above are approximate. Accurately weigh a few pounds into your spreader and apply to measured area.

STORAGE AND DISPOSAL

Do not contaminate water, food or feed by storage or disposal.

STORAGE

Store in a dry location.

PERIODIC DISPOSAL: Pesticide wastes are toxic. Improper disposal of excess pesticide, spray mixture or residue is a violation of Federal Law.

CONTAINER DISPOSAL: Completely empty bag into application equipment. Then dispose of empty bag in sanitary landfill or by incineration.

HOUSEHOLD: Do not reuse empty container. Securely wrap original container in several layers of newspaper and discard in trash.

USE & RATE RECOMMENDATIONS FOR TURF

Table with 4 columns: Disease, Turf Type, Fertilizer Rate, and Application Note. Includes Snow Mold, Dethatch, and Fairy Ring.

Use not registered by the California Department of Pesticide Regulation.

IMPORTANT NOTICE: Seller warrants that this product conforms to its chemical description and is reasonably fit for the purposes stated on the label when used in accordance with the directions and instructions specified on the label under normal conditions of use.