

VIGORO

NET WT. 10 OZ.

VIGORO ANT AND ROACH DUST

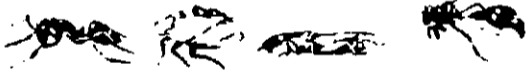
DIRECTIONS FOR USE

ACCEPTED 557-1949 OCT 15 1958 Under the Federal Insecticide, and Rodenticide Act...

ANT and ROACH DUST

Kills these household pests:

Cockroaches, Ants, Fleas, Brown Dog Ticks, Spiders, Wasps, Crickets, Silverfish and More



ANT COCKROACH CRICKET WASP

INGREDIENT STATEMENT

ACTIVE INGREDIENT:

Bendiocarb: 2,2-dimethyl-1,3-benzodioxol-4-yl-methylcarbamate\* 1

INERT INGREDIENTS: 99

TOTAL 100

\*Protected by U.S. Patent No. 3,736,338

EPA Reg. No. 557-1949

EPA Est. No. 2217-KS-1

KEEP OUT OF REACH OF CHILDREN CAUTION

See other panel for additional precautionary information and first aid

PRECAUTIONARY STATEMENTS HAZARDS TO HUMANS AND DOMESTIC ANIMALS CAUTION

Avoid contact with dust. Do not breathe dust. Avoid contact with eyes, nose, mouth, and skin. Wash hands thoroughly after use. Do not eat, drink, or use tobacco while using this product.

STATEMENT OF PRACTICAL TREATMENT

If swallowed: Drink plenty of water. If inhaled: Move to fresh air. If on skin: Wash with soap and water. If in eyes: Flush with water.

NOTE TO PHYSICIAN: This product contains Bendiocarb, which may cause allergic reactions in some individuals.

ENVIRONMENTAL HAZARDS

This product is highly toxic to fish and aquatic life. Do not apply near water.

STORAGE AND DISPOSAL

Store in original container. Do not use if container is damaged.

CONDITIONS OF SALE AND WARRANTY

This product is sold as a general use insecticide. It does not constitute a warranty of performance.

INDOOR USE

Apply to cracks, crevices, and other hiding places. Do not apply to food or food preparation areas.

Apply to baseboards, under carpets, and behind furniture. Do not apply to walls or ceilings.

Apply to windows and other places where insects enter. Do not apply to screens.

Apply to cracks and crevices in walls and floors. Do not apply to electrical outlets.

DO NOT TREAT ANIMALS OR THEIR BEDDING WITH THIS PRODUCT

This product is highly toxic to animals. Do not use on animals or their bedding.

Do not use in areas where children or pets play. Do not use in areas where food is stored.

USE THIS PRODUCT TO TREAT OVERHEAD NESTS

Apply to cracks and crevices in ceilings and walls. Do not apply to exposed surfaces.

OUTDOOR USE

Apply to cracks and crevices in exterior walls. Do not apply to plants or lawns.

Distributed by Estech, Inc., 30 N. LaSalle St., Chicago, IL 60602.