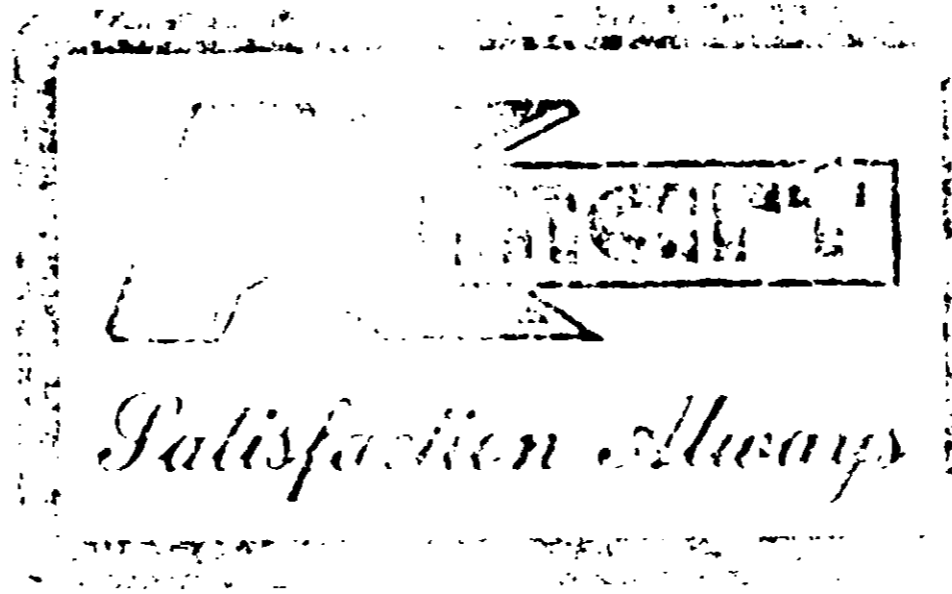
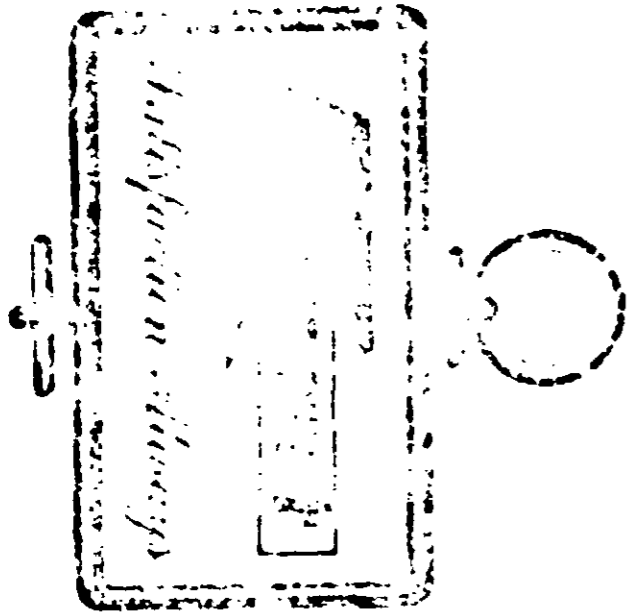
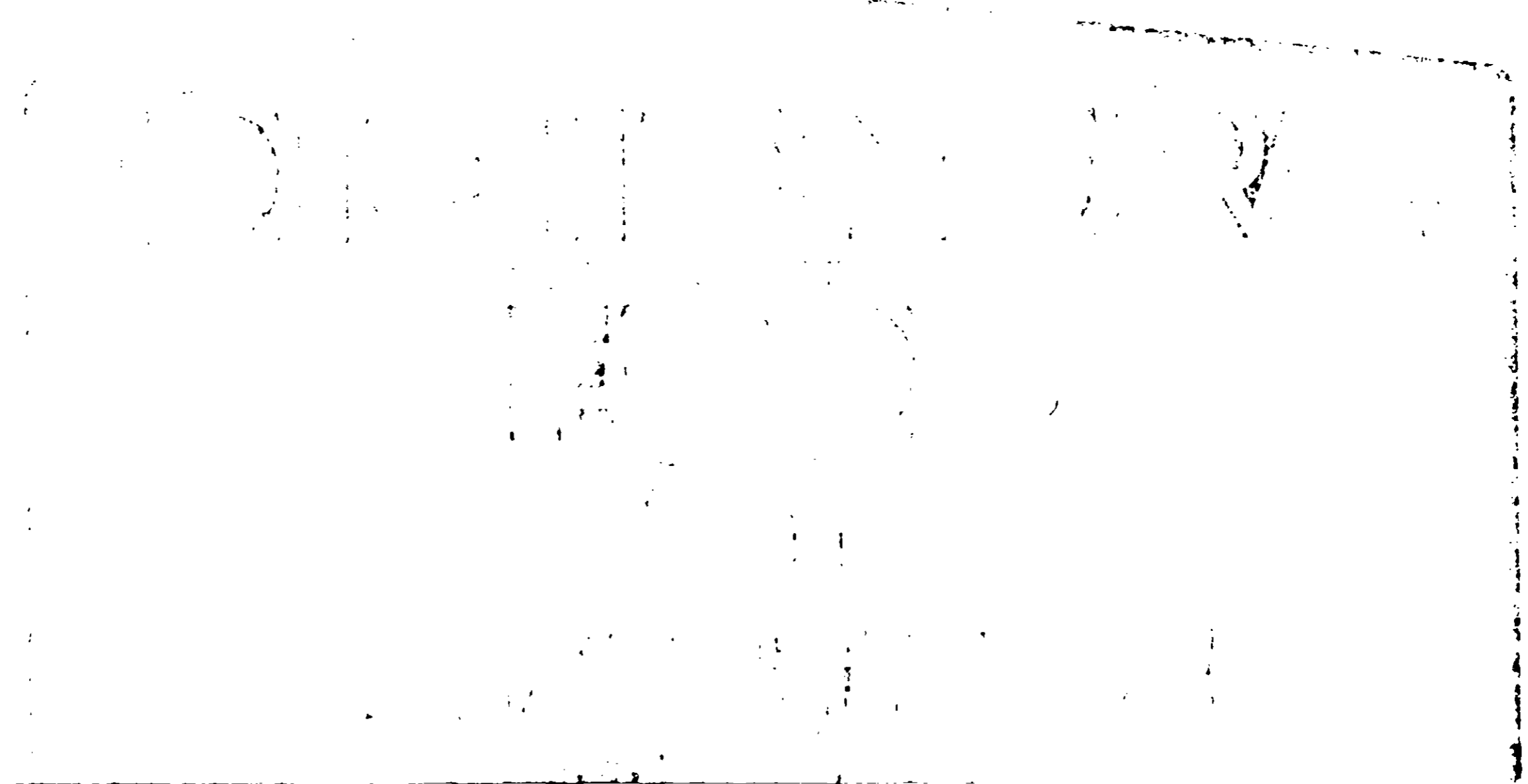


ACCEPTED
MAR 20, 1973



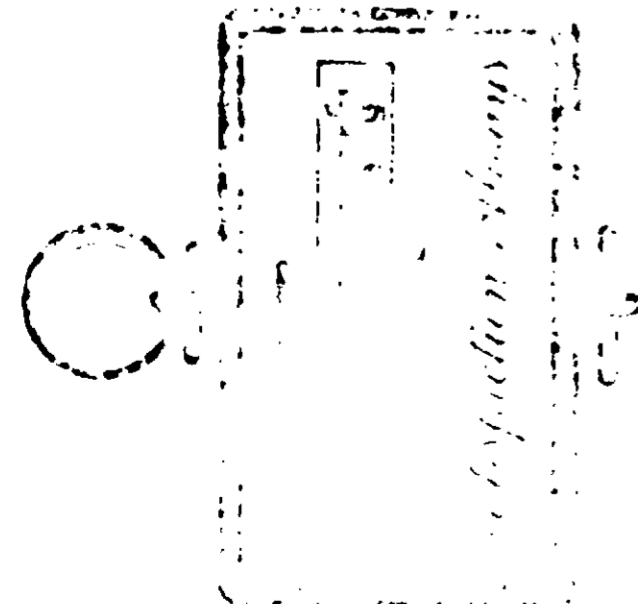
DISCONTINUED



17-5-5

17-5-5

17-5-5



Total Nitrogen (N)..... 12.0%
 1.0% Ammoniacal Nitrogen (Derived from ammoniated superphosphate)
 4.0% Water Insoluble Nitrogen (Derived from condensed urea-formaldehyde)
 7.0% Water Soluble Nitrogen (Derived from urea formaldehyde)
 AVAILABLE PHOSPHORIC ACID (P₂O₅)..... 5.0%
 (Derived from Ammoniated Phosphate)
 SOLUBLE POTASH (K₂O)..... 5.0%
 (Derived from Muriate of Potash)
 IRON EXPRESSED AS ELEMENTAL (Fe)..... 1.6%
 (Derived from Ferrous Sulfate)
 Potential Acidity 450 lbs. Calcium Carbonate Equivalent per ton.

S. S. KRESGE COMPANY, Troy, Michigan 48064
 by Swift Chemical Company Chicago, Illinois 60604 19-6240

DIRECTIONS

K-Mart Dichondra Food with Insecticide contains ingredients which have quick acting and long lasting qualities. This specially formulated product will green up your Dichondra in a matter of days and will last for weeks.

K-Mart Dichondra Food with Insecticide will not burn, if applied according to the directions. Watering in speeds up the feeding process since Dichondra cannot use plant food in a dry form.

K-Mart Dichondra Food with Insecticide is 100% clean, sanitary and odorless since it contains no sewage sludge or other natural organics.

HOW TO USE

ESTABLISHED LAWNS: Dichondra is a heavy feeder and should be fed every 2 months to maintain good growth and color. Apply only when Dichondra foliage is dry. Feed at the rate of 2-3 lbs. per 200 square feet, water area thoroughly immediately after application. Best results will be obtained by using a plant food spreader.

NEW PLANTINGS: Before plugging or seeding, apply 1 pound per 100 square feet using a plant food spreader for uniform application. Rake thoroughly into prepared seed bed before plugging or seeding.

SPREADER SETTINGS

K Mart	9	Control	6
Cyclone	5	Lawn Beauty	9 1/2
Smith's	7	Landmark	8

Spreading rates vary with walking speed and type of lawn. To insure exact coverage, check, read, over a known area.

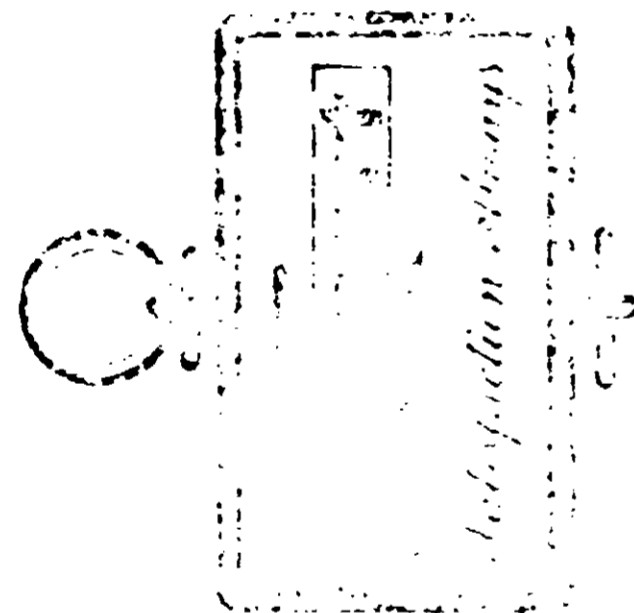
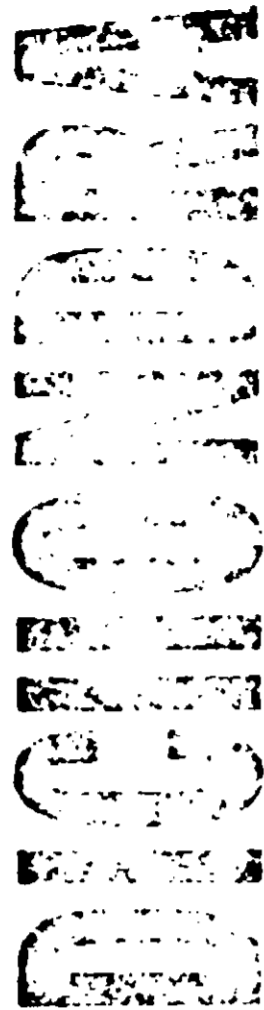
TO CONTROL SOIL BORNE INSECTS: Ants, cutworms, lawn moths, sod webworms, white grubs, fleas, and earwigs will be practically eradicated.

CAUTION: Harmful if swallowed. Avoid inhalation and skin contact. Keep out of eyes as well as mouth. Wash thoroughly with water if contact occurs.

Copyright © 1964 S. S. KRESGE COMPANY, TROY, MICHIGAN 48064. ALL RIGHTS RESERVED. MADE IN U.S.A.

Do not use on lawns, lawns, or other areas where children or pets are likely to play.

If you are allergic to any of the ingredients, do not use on lawns, streets, or ponds. Do not use where children or pets are likely to play. Do not use where children or pets are likely to play.



DIRECTIONS

K-Mart Dichondra Food with Insecticide contains ingredients which have quick acting and long lasting qualities. This specially formulated product will green up your Dichondra in a matter of days and will last for weeks.

K-Mart Dichondra Food with Insecticide will not burn, if applied according to the directions. Watering in speeds up the feeding process since Dichondra cannot use plant food in a dry form.

K-Mart Dichondra Food with Insecticide is 100% clean, sanitary and odorless since it contains no sewage sludge or other natural organics.

HOW TO USE

ESTABLISHED LAWNS: Dichondra is a heavy feeder and should be fed every 2 months to maintain good growth and color. Apply only when Dichondra foliage is dry. Feed at the rate of 2-3 lbs. per 200 square feet, water area thoroughly immediately after application. Best results will be obtained by using a plant food spreader.

NEW PLANTINGS: Before plugging or seeding, apply 1 pound per 100 square feet using a plant food spreader for uniform application. Rake thoroughly into prepared seed bed before plugging or seeding.

SPREADER SETTINGS

K-Mart9	Central6
Cyclone5	Lawn Beauty9 1/2
Scott's7	Bandini13

Spreading rates vary with walking speed and type of lawn. To insure exact coverage, check spreader over a known area.

TO CONTROL SOIL BORNE INSECTS: Ants, cutworms, lawn moth, sod webworms, white grubs, fleas, and earwigs when applied as a reced.

CAUTION: Harmful if swallowed. Avoid inhalation and skin contact. Keep out of eyes as will cause irritation. Wash thoroughly with soap and water if on face and hands.

DO NOT ALLOW CHILDREN OR PETS ON TREATED LAWN. WILL KILL THOSE WHO ASPIRE OR GET GRASS INTO THE SOIL AND GRASS IS COMPLETELY DEAD.

Do not apply to lawns, gardens, fruit, or flower crops. Avoid contact with children, food, clothing, and fabrics, etc.

This product is toxic to fish, birds, and other wildlife. Keep out of lakes, streams, or ponds. Do not apply when runoff is likely to occur. Do not apply when water is being applied to lawn for irrigation. Do not mix with water. Do not use on lawns that are being irrigated.

DO NOT REUSE THIS CONTAINER. DESTROY WHEN EMPTY.

© 1965 Swift

