

FRONT PANEL

Treats 5,000 sq. ft.

GOLDEN VIGORO®
MOSS CONTROL PLUS
LAWN FERTILIZER

CONTROLS MOSS
AS IT FEEDS

GREENS LAWNS FAST
KEEPS IT GREEN

ACCEPTED
AUG 29 1988
Under the Federal Insecticide,
Fungicide, and Rodenticide Act,
as amended, for the pesticide
registered under
EPA Reg. No. 557-1838

Keep out of reach of children.
CAUTION
See back panel for additional
precautionary statements.

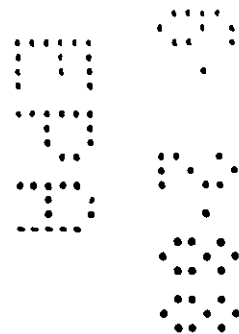
E.P.A. Reg. No. 557-1838

ACTIVE INGREDIENT	
*Ferrous Sulphate Heptahydrate.40.0%
INERT INGREDIENTS60.0%
Total	100.0%

*Equivalent to Ferrous Sulphate Monohydrate 24.5%

E.P.A. Est. No. 557-CA-1

NET WT 20 LBS.



8/3

REAR PANEL

NET WT. 20 LBS.

GOLDEN VIGORO

MOSS CONTROL PLUS

LAWN FERTILIZER

12 - 2 - 2

GUARANTEED ANALYSIS

TOTAL NITROGEN (N) 12.0%

0.5% Ammoniacal Nitrogen

8.5% Urea Nitrogen

3.0% Water Insoluble Nitrogen

AVAILABLE PHOSPHORIC ACID (P₂O₅) 2.0%

SOLUBLE POTASH (K₂O) 2.0%

Iron (Fe) 8.0%

Derived from ammoniated phosphate, urea, isobutylidene diurea,
 muriate of potash and iron sulphate. Manufactured by Vigoro
 Industries, Inc., Fairview Heights, Illinois 62208.

**CAUTION: WILL STAIN CEMENT, STONE AND PAINT
 REMOVE ALL SPILLAGE PROMPTLY BY SWEEPING.**

PRECAUTIONARY STATEMENTS

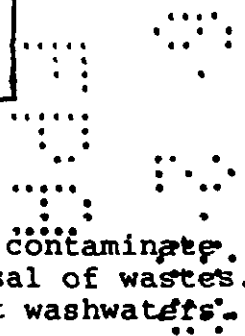
HAZARD TO HUMANS AND DOMESTIC ANIMALS

Avoid contact with skin, eyes or clothing. Avoid breathing dust.
 Keep out of reach of children. Wash thoroughly after handling.
 Harmful if swallowed.

STATEMENT OF PRACTICAL TREATMENT	
If on skin:	Wash with soap and water.
If in eyes:	Flush with plenty of water.

ENVIRONMENTAL HAZARD

Do not apply directly to water or wetlands. Do not contaminate
 any body of water by cleaning of equipment or disposal of wastes.
 Do not contaminate water when disposing of equipment washwaters.



REAR PANEL CONT.

DIRECTIONS FOR USE

It is a violation of federal law to use this product in a manner inconsistent with its labeling.

Golden Vigoro Moss Control Plus Lawn Fertilizer controls moss and greens grass fast. Apply any time of year when moss is a problem. If application is made in summer or during hot dry weather, soak lawn the day before application and water again promptly after application to maintain good growing conditions.

1. Rake lawn lightly to remove loose moss, dead grass and leaves.
2. Mow lawn to normal height and remove clippings.
3. Apply product at rate of 1/2 lb. per 125 sq. ft. (contents of bag will cover 5,000 sq. ft.). Covering the entire lawn area will give superior results to spot treatment.
4. Water immediately after application to remove product from grass blades and bring it into the root zone.

Annual applications are recommended as a prevention for new infestations of moss.

SPREADER SETTINGS

<u>SPREADER</u>	<u>SETTINGS</u>	<u>SPREADER</u>	<u>SETTING</u>
Cyclone	4 1/2	Wards	4 1/2
Central Poly Drop	10	Precision 20C	4
Central Broadcast	4 1/2	Scott PF-1	5 1/2
Ortho 3000	5	Sears	5

Note: Spreader rate varies with walking speed, condition and age of spreader. Calibrate by checking over measured area and adjust, if necessary.

CAUTION: Close spreader openings when loading, turning or when stopped.

Storage: Store in Original container in safe, dry place. Do not contaminate other pesticides, fertilizer, seeds, food or feed. Return spillage to original container prior to disposal.	Product Disposal: Securely wrap original container in several layers of newspaper and discard in trash. Container Disposal: Do not re-use bag. Discard bag in trash.
---	---

Golden Vigoro® is a registered trademark of Vigoro Industries, Inc.