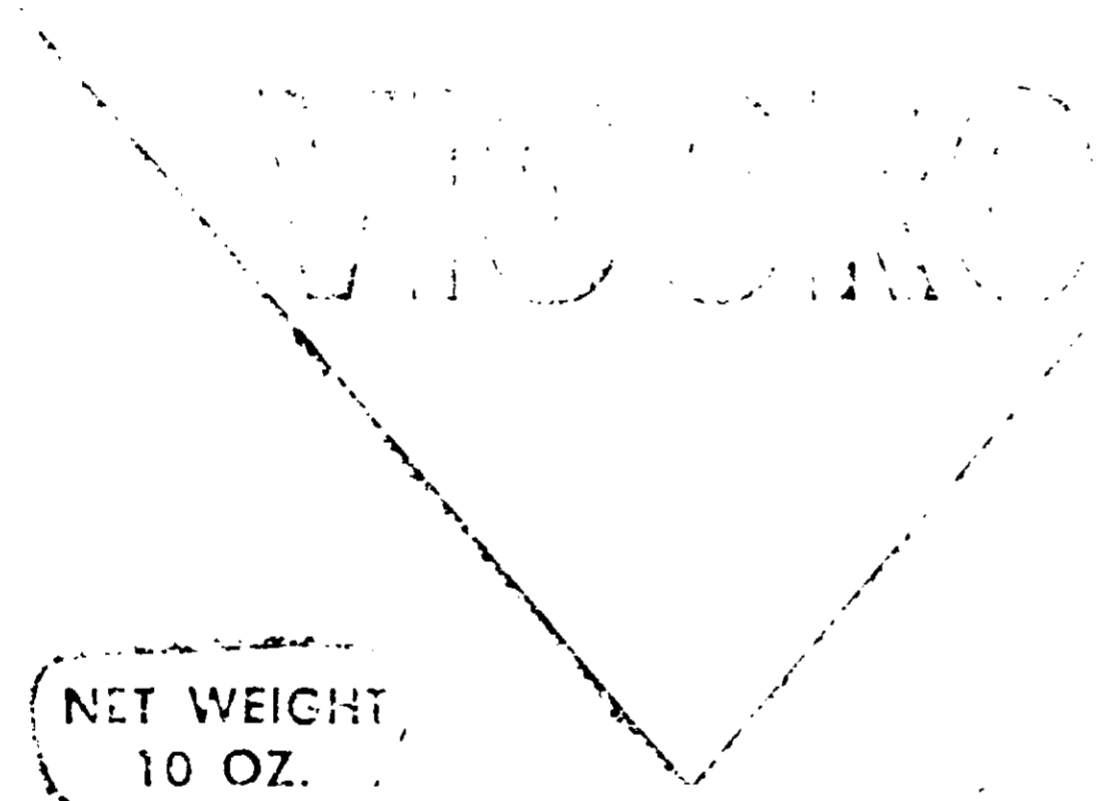


4-22-71
557-1767



VIGORO ROSE DUST

DIRECTIONS

This is a squeeze duster—just squeeze to apply

[Faint, mostly illegible text providing detailed usage instructions and product information.]

ROSE DUST

KILLS ROSE PESTS
PREVENTS BLACK
SPOT & MILDEW

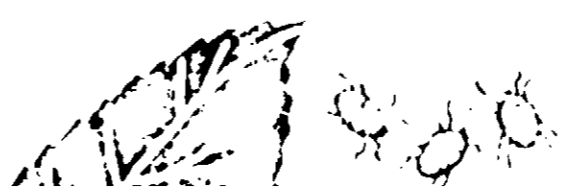
KILLS



APHIDS



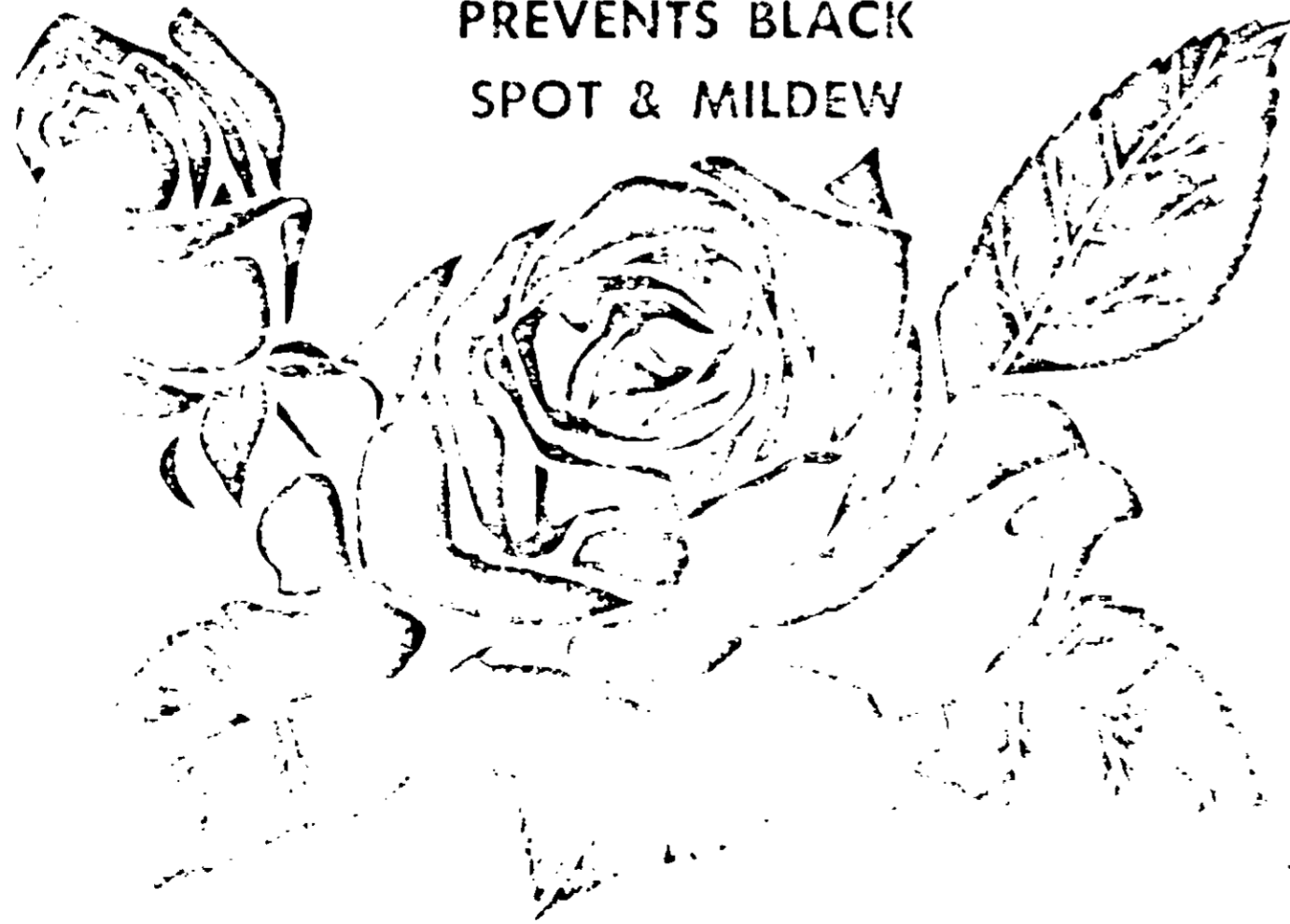
LEAF HOPPERS



NET WEIGHT
10 OZ.

ROSE DUST

KILLS ROSE PESTS
PREVENTS BLACK
SPOT & MILDEW



KILLS



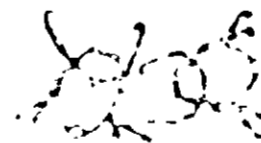
APHIDS



LEAF HOPPERS



SPIDER MITES



JAPANESE
BEETLES



THRIPS & MANY
OTHER PESTS

VIGORO ROSE DUST

DIRECTIONS

This is a squeeze duster—just squeeze to apply

Use Vigoro Rose Dust on all roses in the open form of bush, tree, or climbing roses. Apply to all parts of the plant, especially the undersides of the leaves. Apply in the morning or evening, when the temperature is between 60° and 80° F. Apply to all parts of the plant, especially the undersides of the leaves. Apply in the morning or evening, when the temperature is between 60° and 80° F.

Apply to all parts of the plant, especially the undersides of the leaves. Apply in the morning or evening, when the temperature is between 60° and 80° F.

INSECTS—Apply to all parts of the plant, especially the undersides of the leaves. Apply in the morning or evening, when the temperature is between 60° and 80° F.

DISEASES—Apply to all parts of the plant, especially the undersides of the leaves. Apply in the morning or evening, when the temperature is between 60° and 80° F.

PREVENTS—Apply to all parts of the plant, especially the undersides of the leaves. Apply in the morning or evening, when the temperature is between 60° and 80° F.

CARE—Apply to all parts of the plant, especially the undersides of the leaves. Apply in the morning or evening, when the temperature is between 60° and 80° F.

Apply to all parts of the plant, especially the undersides of the leaves. Apply in the morning or evening, when the temperature is between 60° and 80° F.

Apply to all parts of the plant, especially the undersides of the leaves. Apply in the morning or evening, when the temperature is between 60° and 80° F.

Apply to all parts of the plant, especially the undersides of the leaves. Apply in the morning or evening, when the temperature is between 60° and 80° F.

Apply to all parts of the plant, especially the undersides of the leaves. Apply in the morning or evening, when the temperature is between 60° and 80° F.

Apply to all parts of the plant, especially the undersides of the leaves. Apply in the morning or evening, when the temperature is between 60° and 80° F.

Apply to all parts of the plant, especially the undersides of the leaves. Apply in the morning or evening, when the temperature is between 60° and 80° F.

Apply to all parts of the plant, especially the undersides of the leaves. Apply in the morning or evening, when the temperature is between 60° and 80° F.

THIS IS A REFILLABLE DUSTER



VIGORO
ROSE DUST