

# VIGORO

## VIGORO TOMATO DUST

### DIRECTIONS FOR USE

Best results are secured by dusting at regular intervals throughout the growing season. For disease control, begin applications before diseases occur or appear and repeat at 7-10 day intervals as needed. More frequent applications may be necessary in rainy wet weather. Apply preferably in early morning or late evening when the air is quiet, and cover all exposed parts of the plant with a thin, even film of dust using a garden type duster. Swift's Tomato Dust is to be used without dilution.

Crop, Insects and Diseases

**TOMATOES**—Tomato Fruitworm, Tomato Hornworm, Tobacco Hornworm, Fall Armyworm, Leafhoppers, Stink Bugs, Flea Beetles, European Corn Borer, Corn Earworm, Armyworms, Early and Late Blight, Anthracnose, Septoria Leaf Blight, Stemphylium Gray Leaf Spot.

**BEANS**—Lygus Bugs, Stink Bugs, Corn Earworm, Leafhoppers, Flea Beetles, Tarnished Plant Bug, Bean Leaf Roller, Mexican Bean Beetle, Downy Mildew. (Last Dust to Harvest, 4 days. No Time Limit on Dry Beans.)

**CUCUMBER, MELONS, PUMPKINS, SQUASH** (Summer and Winter), **WATERMELONS**—Striped Cucumber Beetle, Spotted Cucumber Beetle, Melon Aphid, Melonworm, Pickleworm, Squash Bug, Leafhoppers, Cucumber Beetles, Flea Beetles, Downy Mildew, Anthracnose.

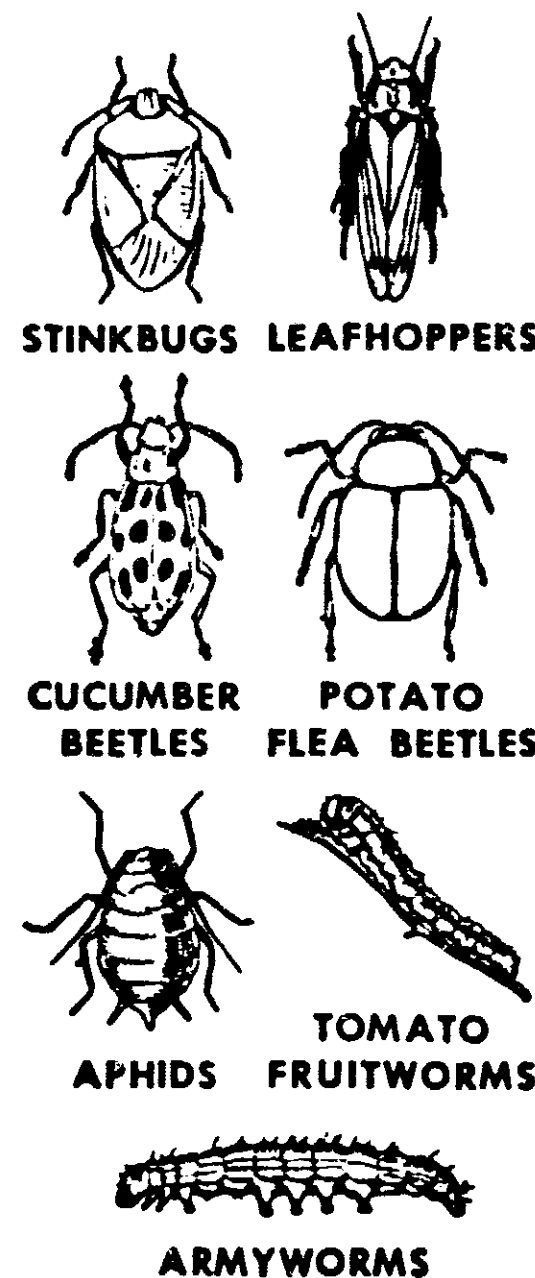
**POTATOES**—Flea Beetles, Cucumber Beetles, Tomato Fruitworm, Fall Armyworms, Corn Earworm, Tomato Hornworms, Tobacco Hornworms, Leafhoppers, European Corn Borer, Stink Bugs, Colorado Potato Beetle, Lace Bugs, Lygus Bugs, Early and Late Blight.

**CAUTION:** Harmful if inhaled or swallowed. May cause irritation of nose and throat. May be absorbed through skin and throat. Do not take internally. Do not breathe dust. Skin contact may be harmful. Avoid contact. Wash hands before eating. Wash thoroughly after using. Avoid contamination of food. Keep out of reach of children. Wear regular long sleeved work clothing. Change to clean clothing daily.

This product is toxic to fish. Keep out of lakes, streams, or ponds. Do not contaminate water by cleaning of equipment, or disposal of wastes. Apply this product only as specified on this label. Do not re-use container. Destroy when empty.

**NOTE TO PHYSICIAN:** Carbaryl is a moderate reversible, cholinesterase inhibitor. Atropine is antidotal.

### KILLS



# TOMATO DUST

5% SEVIN®  
4.2% MANEB DUST

NET WT. 16 OZ. (1 LB.)

**ACCEPTED**  
MAY 18 1971  
UNDER THE FEDERAL INSECTICIDE FUNGICIDE AND RODENTICIDE ACT FOR ECONOMIC POISON REGISTERED UNDER NO. 557-1596

ACTIVE INGREDIENTS  
Carbaryl (1-Naphthyl N-methylcarbamate) ..... 5.0%  
MANEB (Manganese Ethylenebisdithiocarbamate) ..... 4.2%  
INERT INGREDIENTS ... 90.8%  
Total .... 100.0%

CAUTION: Harmful if inhaled or swallowed. May cause irritation of nose and throat. May be absorbed through skin and throat. Do not take internally. Do not breathe dust. Skin contact may be harmful. Avoid contact. Wash hands before eating. Wash thoroughly after using. Avoid contamination of food. Keep out of reach of children. Wear regular long sleeved work clothing. Change to clean clothing daily.

SWIFT'S TOMATO DUST