

# WEED KILLER

NET CONTENTS **No. 250**

**20% SOLUTION**

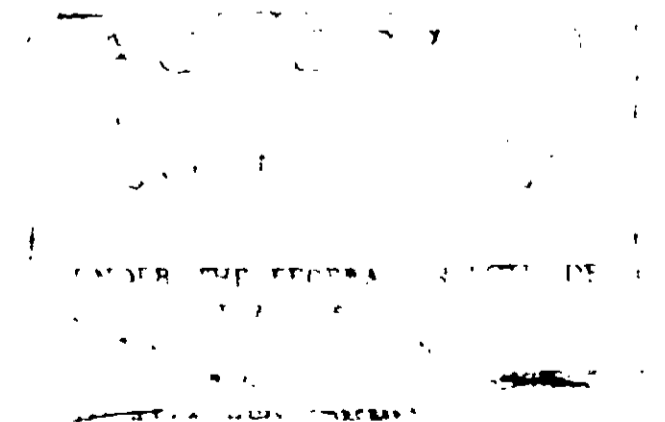
A Water-soluble Herbicide containing 2, 4-D

## DIRECTIONS

Use at the rate of one gallon with water to make 250 gallons of spray, equivalent to eight teaspoons to 2-1/2 gallons water. Apply with hand or power sprayer in sufficient quantity to give thorough coverage of the weeds without excessive runoff on wetting of the soil. For turf, approximately 215 gallons per acre (one gallon to 200 square feet) will be required. More luxuriant foliage will require more spray. If extremely efficient spray equipment is available, it may be possible to obtain thorough coverage with a smaller volume of spray mixture, in which case the concentration of Weed Killer in the spray should be proportionately increased.

The recommended concentration should be doubled for the difficult-to-control weeds, such as yarrow and goldenrod. Double the concentration also for poison ivy growing in shady locations. Control of this species in shady locations is doubtful. Deep-rooted perennial weeds such as nutweed, Canada thistle and leafy spurge are more difficult to kill and may require repeated applications.

Apply with pressure of 25 to 250 pounds per square inch where dense foliage occurs. Higher pressure may cause matting of vegetation and make thorough coverage impossible. Apply during warm weather when temperatures are at least 60° F. and when weeds are growing actively. Apply to lawns between mowings so that no maximum foliage is present.



Active Ingredient:	
* Mixed Ethanolamine Salts of	
2, 4-Dichlorophenoxyacetic Acid .....	33.9%
Inert Ingredients: .....	66.1%
TOTAL .....	100.0%

\* Equivalent to 2, 4-Dichlorophenoxyacetic Acid - 20.0%

## KILLS

DANDELION - POISON IVY - POISON OAK - RAGWEED - PLANTAIN - (BROAD AND NARROW LEAF) - THISTLES - DOCKS - WILD MORNING GLORY - SHEPHERD'S PURSE - WILD CARROT, MALLOW and many other broad-leaved weeds without injury to grasses.

For lawns and ornamental turf in golf courses, parks, playgrounds and recreational areas; non-crop areas such as along highways, railroad rights-of-way, fire lanes, airfields and around farm buildings, and spot treatments in pastures.

## CAUTION

KEEP OUT OF REACH OF CHILDREN

May cause skin irritation. Avoid contact with eyes, skin and clothing. Avoid spray drift to susceptible plants as this product may injure cotton, beans, ornamentals, etc. (Course sprays are less likely to drift.) Thoroughly clean spray equipment with a suitable chemical cleaner before using for other purposes. Do not store near fertilizers, seeds, insecticides or fungicides.

Rinse equipment and containers and dispose of wastes by burying in non-crop lands away from water supplies. Containers should be disposed of by punching holes in them and burying with wastes.



Manufactured by  
BAIRD & MCGUIRE, INC.  
Hollbrook, Mass.

USDA Reg.  
7551-2

## IMPORTANT

Avoid application to vegetables, flowering plants, shrubbery, trees or other desirable type of plants. This is particularly necessary when treating weeds in orchards, vineyards and nurseries.

Do not use on bent grass lawns, except for spot spraying.

Always clean spraying equipment thoroughly before using for any other purpose. Rinse several times with hot water containing soap or trisodium phosphate (one pound in twenty-five gallons of water). Allowing the tank to stand filled with water overnight is recommended. Be sure to clean out hose and spray nozzle.

## WARNING

Do not dispose of poison ivy by burning after it has been killed. Smoke from the burning vine is very poisonous on contact with the skin.

## CAUTION

Do not graze treated areas by livestock within 7 days after treatment.

Do not use on newly sown turf.

Do not use on the irrigation of lawns or other areas for domestic purposes.

Do not apply to clover or any other legume.