

Scotts
TURF BUILDER weed control plus lawn fertilizer
plus 2
 Treats 4,000 sq ft

2226

Scotts
TURF BUILDER
plus 2
 FOR GRASS
 weed control plus lawn fertilizer
 for use on bahia, bermuda, centipede, zoysia, fescue or bluegrass lawns

Clears out weeds—(see list on other side)
 Gives complete feeding of Scotts long-lasting fertilizer for developing thick, green lawns.

DO NOT USE ON SEAMANTINE, CARPET GRASS, CREEPING BENT GRASS, OR BROMUS OR CLOVER

NET WEIGHT 22 LBS. 22-3-3

Scotts
TURF BUILDER weed control plus lawn fertilizer
plus 2
 FOR GRASS

2226

2226

Scotts
TURF BUILDER weed control plus lawn fertilizer
plus 2

Scotts
TURF BUILDER weed control plus lawn fertilizer
plus 2
 FOR GRASS

2226

2226

Scotts
TURF BUILDER weed control plus lawn fertilizer
plus 2
 Treats 4,000 sq ft

EASY
 OPEN BAG

2226

Scotts
TURF BUILDER
plus 2
 FOR GRASS
 weed control plus lawn fertilizer
 for use on bahia, bermuda, centipede, zoysia, fescue or bluegrass lawns

WEEDS CONTROLLED

Annual weeds: chickweed, dandelion, clover, crabgrass, goosegrass, knotweed, lambsquarters, pigweed, smartweed, spurge, yellow nutsedge, and other broadleaf weeds.
 Perennial weeds: quackgrass, yellow foxtail, and other grasses.
 Annual grasses: crabgrass, goosegrass, and other grasses.
 Perennial grasses: quackgrass, yellow foxtail, and other grasses.

How To Use

1. Mow lawn before application.
 2. Apply Scotts Turf Builder plus 2 to the lawn.
 3. Water lawn thoroughly after application.
 4. Repeat application every 4-6 weeks.

What to Expect

1. Weeds will be controlled within 2-4 weeks.
 2. Lawn will be fertilized and green within 2-4 weeks.

Free full-service

Scotts Turf
 Satisfaction Guarantee

Scotts
TURF BUILDER weed control plus lawn fertilizer
plus 2

Scott's

TURF BUILDER
plus 2
FOR GRASS
weed control
plus lawn
fertilizer

FOR GRASS

weed control plus lawn fertilizer

for use on bahia, bermuda, centipede, zoysia, fescue or bluegrass lawns

Clears out weeds- (see list on other side)
Gives complete feeding of Scotts long-lasting fertilizer for developing thick, green lawns.

DO NOT USE ON ST. AUGUSTINE, CARPETGRASS, CREEPING BENTGRASS, DICHLONDRA, OR LIPPIA

NET WEIGHT 22³/₄ LBS (Treats 4,000 sq ft) **22-3-3**

CAUTION: KEEP OUT OF REACH OF CHILDREN

Avoid contact with the eyes, skin and clothing. Wash thoroughly after handling. Avoid application on shrubs, flowers, fruit or vegetable plants. Do not store near fertilizers, seeds, insecticides or fungicides. Do not contaminate water used for irrigation or domestic purposes. Do not reuse container. Destroy when empty but do not burn.

Active ingredients: 2,4-Dichlorophenoxyacetic acid 0.60%
2-Methyl-4-chlorophenoxypropionic acid 0.60%
Inert ingredients 98.80%
Total 100.00%

US Composition Pat No. 3,083,089 EPA Reg No. 538-71-AA EPA Est. 538-OH-1 6431126

Net Weight 22³/₄ lbs Turf Builder Plus 2 for Grass 22-3-3 guaranteed analysis

Total nitrogen (N) 22%

13% ammoniacal nitrogen

13% urea nitrogen

7.4% water insoluble nitrogen

Available phosphoric acid (P₂O₅) 3%

Water soluble potash (K₂O) 3%

Total available primary plant food 28%

Chlorine, not more than 2.68%

Derived from monoammonium phosphate, methylene urea, urea, mirrate of potash, ferrous ammonium sulfate

Iron (Fe) 1.10%

(as Fe₂O₃) 1.57%

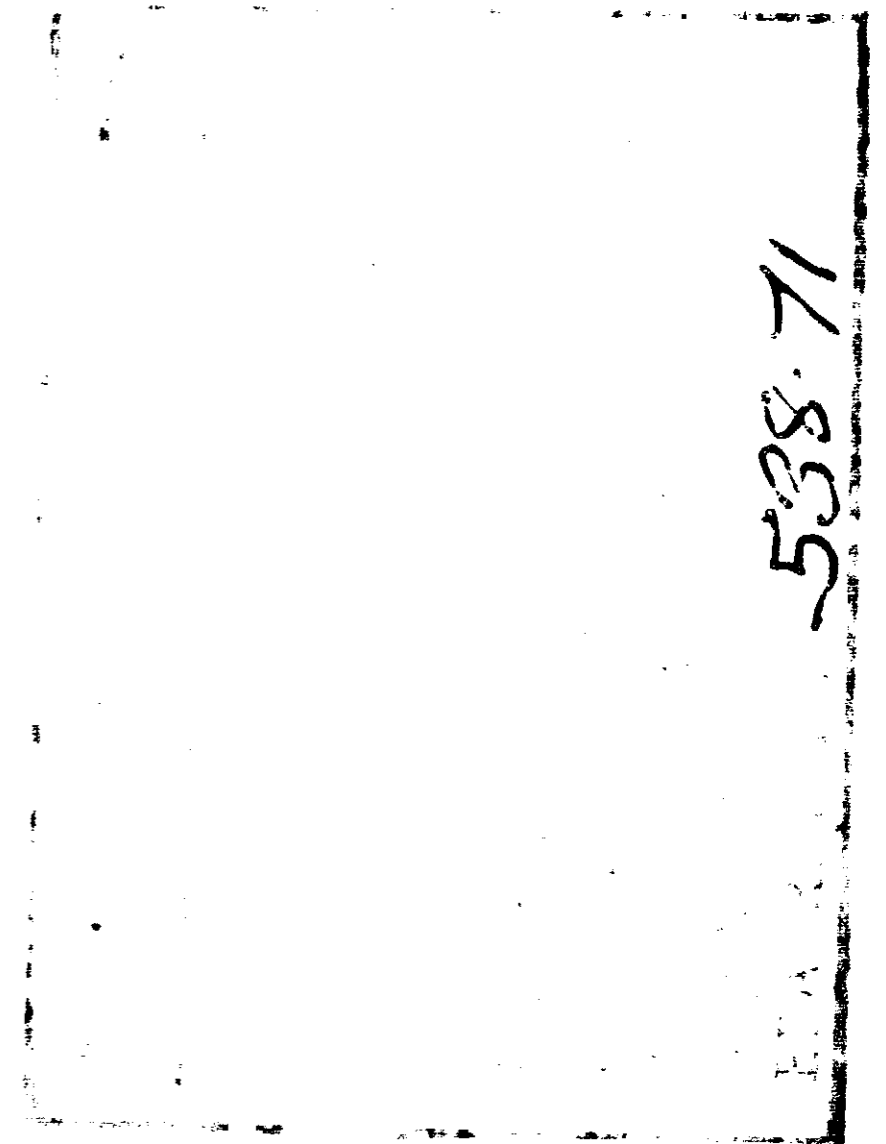
Derived from ferrous ammonium sulfate

Potential acidity equivalent to 600 lbs calcium carbonate per ton

US Process Pat No. 3,076,700 Product of USA O.M. Scott & Sons, Marysville, Ohio 43040

TURF BUILDER
plus 2
FOR GRASS
weed control
plus lawn
fertilizer

Scott's



2226

2226

2226

Scott's
TURF BUILDER
plus 2
weed control
plus lawn
fertilizer

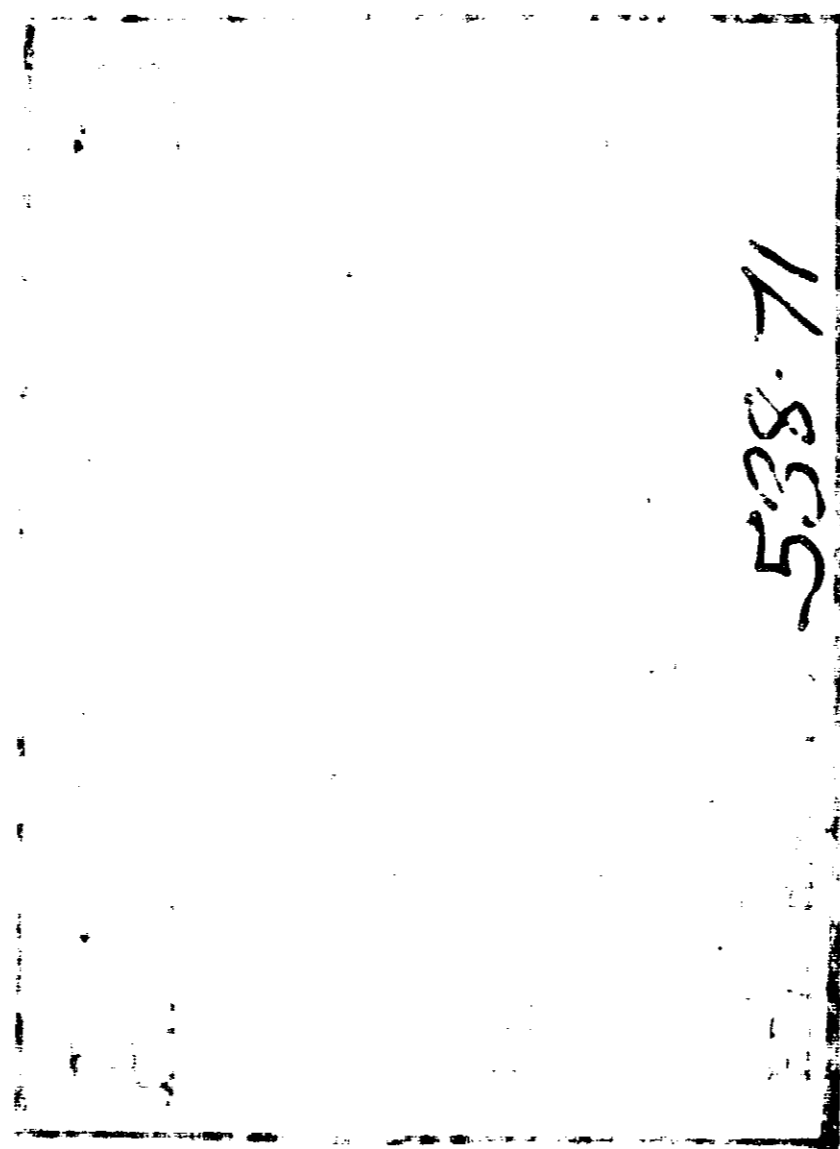
222

TURF BUILDER weed control plus lawn fertilizer



plus 2

FOR GRASS



SCOTT'S plus 2

FOR GRASS

weed control plus lawn fertilizer

for use on bahia, bermuda, centipede, zoysia, fescue or bluegrass lawns

WEEDS CONTROLLED

aster	clover (white)	fog fruit	morning glory	ragweed
bittercress	cudweed	galinsoga	mustard	shepherd's purse
black medic	curly dock	ground ivy	pennywort	smartweed
buckhorn	daisy fleabane	heal-all	pepperweed	stichwort
bur clover	dandelion	henbit	pigweed	thyme-leaved
buttonweed	dichondra	knotweed	plantain	sandwort
centella	dollarweed	(seedling)	prickly lettuce	vetch
chickweed	English daisy	lambquarters	puncturevine	shad-flower
chicory	evening	lippia	purslane	yellow-rocket
cinqufoil	primrose	(matchweed)	pursley	
	tilaree	moneywort	(Mexican clover)	

How To Use

- DO** use when weeds are up and growing actively. On bahia and centipede lawns only, wait until after the second mowing of the year but not before mid-March. In the fall do not treat centipede after the first of October, do not treat bahia after the first of November.
- DO** apply only when lawn is wet from dew, rain or thorough watering (very important so that the Scott's Plus 2 particles will stick to the weed leaves instead of falling to the soil).
- DO** withhold watering lawn for at least 24 hours after application to avoid washing particles off the weed leaves.
- DO** sweep or hose material off walks, driveways, and shoes to avoid discoloration.
- DO** apply on a calm day.
- DO** apply at Scott's Spreader (Standard or Automatic Model) setting **6 3/4** (treats 4,000 sq ft).
- DO** slightly overlap spreader's wheel tracks or you may have "stripes" of untreated lawn.
- DON'T** use when rain is expected within 24 hours.
- DON'T** use when grass is so tall it touches bottom of spreader (mow lawn first in such situations).
- DON'T** use on a newly seeded, sodded or sprigged lawn. Wait until it has been mowed at least 4 times.
- DON'T** plant right after using Turf Builder Plus 2. Wait at least one month.
- DON'T** use on St. Augustine, carpetgrass, lippia, dichondra, creeping bentgrass; nor on flowers, shrubs, fruit, vegetable plants.
- DON'T** apply with a rotary type spreader.

What to expect

This product does not work overnight. It is designed to provide slow, steady controlled action. Stems and leaves of weeds may begin to twist and curl in a few days, but a month or more may be required for complete control, especially when weather is dry or cool.

It is not necessary to rake out dead weeds. They will eventually disintegrate and disappear.

Only weeds growing at time of application will be eliminated. This product does not prevent weed seeds from producing new plants, whether such seeds are on the surface or buried in the soil. Nor does it control existing oxalis or crabgrass.

If particles become washed off weed foliage within 24 hours after application, control may be less effective. If there is no indication that it is working after 3 or 4 weeks of good growing weather another treatment may be needed.

A few weeds may be resistant to control. If this happens, please forward specimens so we can identify them and advise you further.

After weed control is achieved, you are urged to follow through on the basic needs of every lawn: fertilizer, water and regular mowing.

Free bulletin-service

Scott's Policy
No-Quibble Guarantee

If you are not completely satisfied with results after using Scott's Plus 2, we will refund your money. Check Scott's refund code on the product label for all details. No cash back on return.

SCOTT'S *the lawn people*

wns

8

-3

flowers,
te water

0.60%

0.60%

98.0%

00.00%

43.1126

analysis

22%

3%

3%

28%

2.68%

late

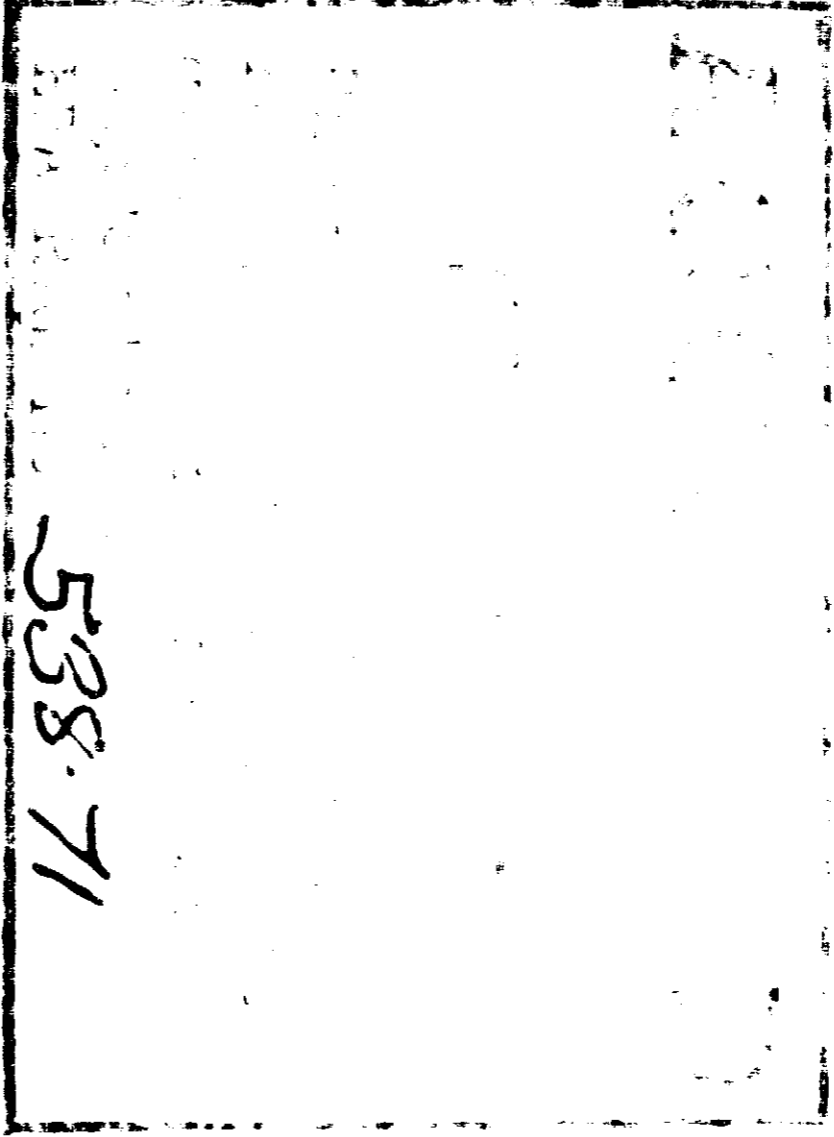
1.10%

43040

weed control plus 1 fertili
plus 2
control plus 1 fertili
plus 2
FOR GRASS
Scott's
TURF BUILDER

2226

2226



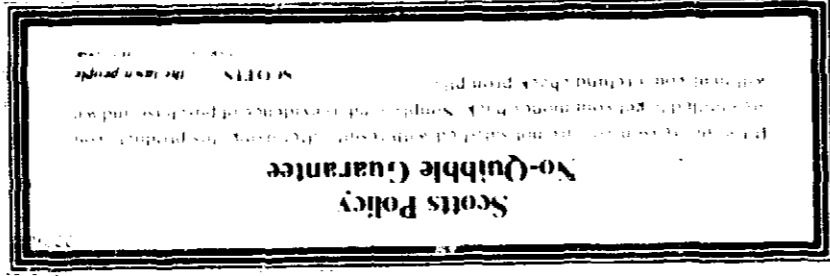
How To Use

- DO** apply at Scott's Spreader (Standard or Automatic Model) setting (treats 4,000 sq ft) slightly overlap spreader's wheel tracks or you may have "stripes" of untreated lawn
- DO NOT** use when rain is expected within 24 hours
- DO NOT** use when grass is so tall it touches bottom of spreader (mow lawn first in such situations)
- DO NOT** use on a newly seeded, sodded or sprayed lawn. Wait until it has been mowed at least 4 times
- DO NOT** plant right after using Turf Builder Plus 2. Wait at least one month
- DO NOT** use on St. Augustine, centipennis, hippic, dichondra, creeping bentgrass, not on flowers, shrubs, fruit, vegetable plants.
- DO NOT** apply with a rotary type spreader
- DO NOT** apply on a calm day
- DO NOT** sweep or hose (gentle) off walks, driveways and shoes to avoid discoloration
- DO NOT** withhold watering lawn for at least 24 hours after application to avoid washing particles off the weed leaves)
- DO NOT** apply when lawn is wet from dew, rain or thorough watering. It is important so that the Scott's Plus 2 particles will stick to the seed leaves instead of falling to the soil.
- DO NOT** use when weeds are up and growing actively. On Bahia and centipede lawns only, wait until after the second mowing of the year but not before mid-March. In the fall do not treat centipede after the first of October, do not treat Bahia after the first of November.

What to expect

This product does not work overnight. It is designed to provide slow, steady control action. Stems and leaves of weeds may begin to wilt and curl in a few days, but a month or more may be required for complete control, especially when weather is dry or cool. It is not necessary to rake out dead weeds. They will eventually disintegrate and disappear. (Only weeds growing at time of application will be eliminated. This product does not prevent weed seeds from producing new plants, whether such seeds are on the surface or buried in the soil. Nor does it control existing oxalis or crabgrass.) If particles become washed off weed foliage within 24 hours after application, control may be less effective. If there is no indication that it is working after 3 or 4 weeks of good growing, gather another treatment may be needed. A few weeds may be resistant to control. If this happens, please forward specimens so we can identify them and advise you further. After weed control is achieved, you are urged to follow through on the basic needs of every lawn - fertilizer, water and regular mowing.

Free bulletin-service



CAUTION: KEEP OUT OF REACH OF CHILDREN. Avoid contact with the eyes, skin, and clothing. Wash thoroughly after handling. Avoid application on shrubs, flowers, fruit or vegetable plants. Do not store near fertilizers, seeds, insecticides or fungicides. Do not contaminate water used for irrigation or domestic purposes. Do not reuse container. Destroy when empty, but do not burn. Contains 2,4-Dichlorophenoxyacetic acid (60% a.i.) 12.0 lbs per ton, 2,4-D methyl 4-chlorophenoxypropionic acid (60% a.i.) 2 lbs per ton, apply 22.5 lbs per ton, 1,000 sq ft to most lawns. Do not apply on Bahia or centipede before mid-March or after October 1 on centipede or after November 1 on Bahia.

Scott's
TURF BUILDER
weed control plus 2
FOR GRASS
fertilizer

3030
1107
687
287
37
227
1126
1007
807
607
water

3



Scott's plus 2

XXXX

Scott's plus 2

XXXX

ACCEPTED
APR 14 1981
Order the Federal Insecticide, Fungicide and Rodenticide Act

Scott's
TURF BUILDER plus 2
FOR GRASS
weed control plus lawn fertilizer

For all mowing grasses, lawns, meadows, fairways, roughs or sports lawns.

Clears out weeds (soil is not used)
Gives complete feeding of Scott's long-lasting fertilizer for developing beautiful green lawns.

NET WEIGHT 10 LBS (4.5 kg) 25-3-3

Directions for use:
Apply to lawn in early spring or late fall.
Apply evenly to the lawn surface.
Water lawn thoroughly after application.
Do not apply to wet lawn.

TURF BUILDER weed control plus lawn fertilizer
plus 2
FOR GRASS
Scott's

*Palmetto weed control
25-3-3-3
20 lbs per bag*

Scott's TURF BUILDER **plus 2**

Directions for use:
Apply to lawn in early spring or late fall.
Apply evenly to the lawn surface.
Water lawn thoroughly after application.
Do not apply to wet lawn.



Scott's TURF BUILDER weed control plus lawn fertilizer
plus 2

XXXX

XXXX

Scott's TURF BUILDER **plus 2**

XXXX

XXXX

Scott's TURF BUILDER **plus 2**