

FRONT:

(Scotts)

\$X.XX
Net Content (or weight) -- 20 oz Avoir

Plant Spray No 2

Kills aphids, mites, thrips (exposed), white fly,
lace bugs, caterpillars, climbing cutworms and
Japanese beetles on ornamental plants and roses.
Controls black spot and powdery mildew on roses.

CAUTION: Keep out of reach of children. The spray from this
product may be a skin irritant and sensitizer. Avoid skin
contact. In case of skin contact, wash with soap and water.
Avoid breathing spray mist.

Do not spray delicate new growth or sensitive plants such as
cyclamen, lantana, maiden hair fern or dull-leaved varieties
of roses. Do not use on food plants.

Warning: Inflammable. Use outdoors. Do not spray into fire
or open flame. Store upright in a cool place (not over 120° F).
Do not place on hot surface. Do not puncture can or throw in
fire or incinerator.

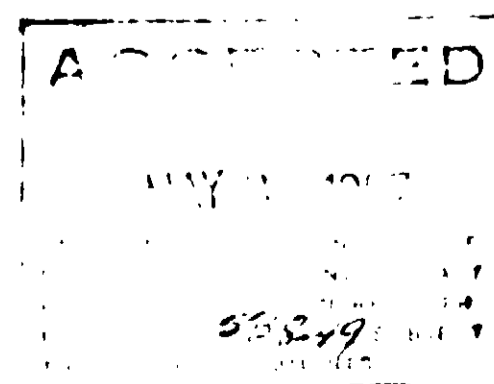
Active ingredients: Pyrethrins	.020%
Rotenone	.100%
Other cube resins	.200%
Methoxychlor, technical	.300%
(Equivalent to .246% 2,2-bis (p-methoxyphenyl)-1,1, 1-trichloroethane and .054% other isomers and related compounds).	
Folpet (N-(trichloromethylthio) phthalimide)	.500%
N-octyl bicycloheptene dicarboximide	.300%
Dinitro (1-methyl heptyl) phenyl crotonate (Karathane)	.112%
Other nitro phenols and derivatives (Karathane)	.013%
Petroleum distillate	.115%
Inert ingredients:	98.34%
Total	100.00%

USDA Reg No 538-XX

Product of USA

O M Scott & Sons

Marysville, Ohio



BACK:

(Scotts)

Plant Spray No 2

DIRECTIONS FOR USE

Remove plastic cap. Hold container upright. Point opening away from you and press button. Use outdoors.

For aphids, mites, thrips (exposed), white fly, lace bugs, caterpillars, climbing cutworms and Japanese beetles on ornamental plants and roses: Hold dispenser about 18" from foliage. Spray plant foliage lightly but thoroughly to wet both sides of leaves and insects that are present. Repeat treatments as necessary. Do not overspray, as burning may result.

For black spot and powdery mildew on roses; Hold dispenser about 18" from foliage. Spray plant foliage lightly but thoroughly to wet both sides of leaves. Apply when new growth appears in the spring and repeat at 7 to 10 day intervals throughout the season. Do not overspray as burning will result.

For best results spray in evening or on cloudy day when air is still. Use slow sweeping motion.