



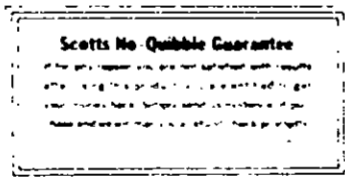
NET WEIGHT 4 LBS

SCOTT'S
ProTurf

fertilizer plus insecticide

8603

Scott's
ProTurf
fertilizer
plus
insecticide
patented *TRIONIZED* bonding ensures sustained action



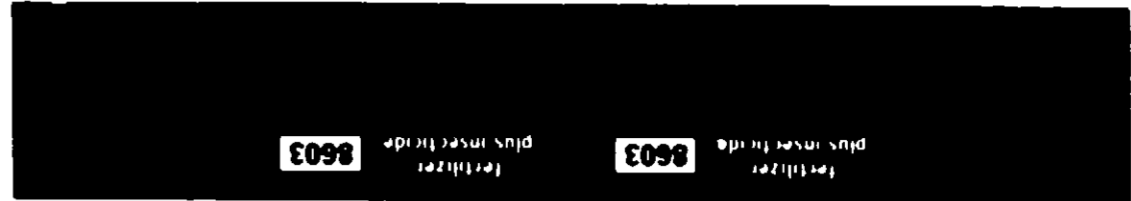
8603

SCOTT'S
ProTurf

fertilizer plus insecticide

8603

9-30-71
538-41



fertilizer plus insecticide

patented *TRIONIZED* bonding ensures sustained action

FERTILIZES TURF AND CONTROLS THESE INSECTS

- | | |
|------------------------------|--------------|
| May or June beetle grubs | chinchbugs |
| Japanese beetle grubs | crickets |
| European chafer grubs | cutworms |
| northern masked chafer grubs | armyworms |
| tropical webworms | Sod webworms |
| Fleas and ticks | leafhoppers |
| vegetable weevils | earwigs |
| night crawlers | chiggers |
| millipedes | ants |

USE THESE SPREADER SETTINGS
to ensure proper distribution

SPREADER	SPREADER SPEED (MPH)	SPREADER WIDTH (FEET)	SPREADER RATE (LBS/1000 SQ FT)
Scott's (Drop Type)	3 mph	3 feet	6
Scott's Rotary	3 mph	8 feet	7
Scott's 1000-8 ft	4.5 mph	8 feet	5
Lely WTR Model	4.5 mph	16 feet	5 III
Lely HR (PTO Model)	4.5 mph	16 feet	5 III

FOR TURFGRASSES AND DICHONDRA ONLY

Foliage may be either moist or dry when making application. To control insects in the soil apply any season. Rain or watering in after application hastens action.

To control surface-active insects apply whenever they are active, but when the outlook is for no rain and watering, mowing or heavy traffic can be withheld for at least 24 hours.

To control chinchbugs, mole crickets, night crawlers, apply at Double Rate whenever they are active. Prompt watering after application is helpful. This product is not for control of chinchbugs in the deep south, from Florida to Texas.

O M SCOTT & SONS

MARYSVILLE, OHIO 43040

8603

71 1150

ANT KILLER

CONTAINING 10% CHLORDANE

DESTROYS ANTS
and MANY OTHER
COMMON
FLOWER GARDEN
and YARD PESTS

CAUTION
KEEP OUT OF REACH OF CHILDREN

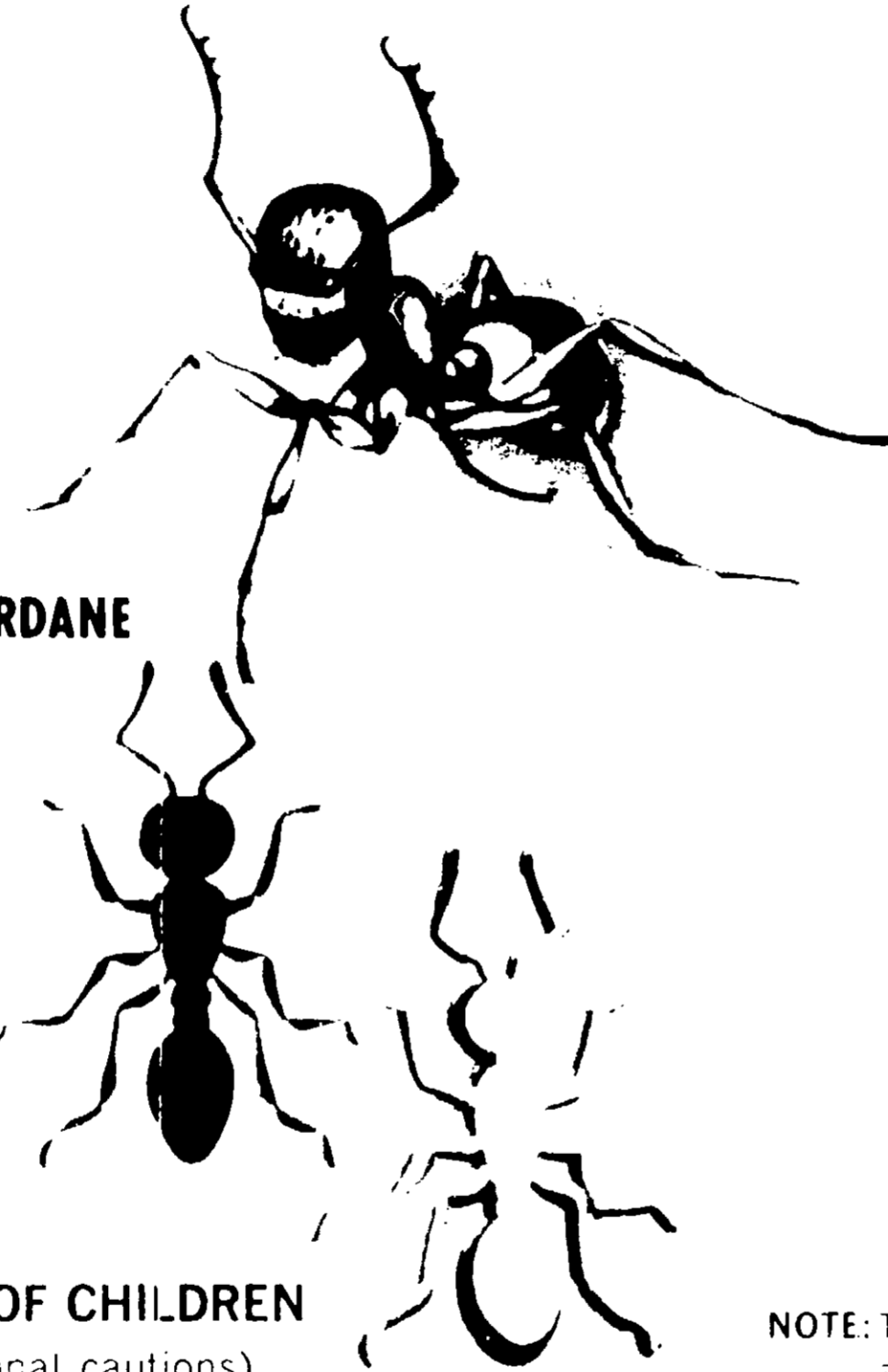
(See back panel for additional cautions)

NET WEIGHT 1 POUND

E.P.A. Reg. No. 539-72

ACCEPTED

UNDER THE FEDERAL INSECTICIDE ACT
1947



DISTRIBUTED BY SEARS, ROEBUCK AND CO.
CHICAGO, ILLINOIS 60607

ACTIVE INGREDIENT: Technical Chlordane 10.0%
INERT INGREDIENTS: 90.0%
TOTAL 100.0%

* Equivalent to 6% octachloro-4,7-methanotetrahydroindane and 4% related compounds.

HOW TO USE WITH SEARS DUSTER

- Apply as directed below.
- For best results use a Sears Duster.

CAN BE USED ON:

Area or plant	Insect	Directions
Ant Nests (Do not use on or around food plants)	Red Harvester and fire ants	Dust hills thoroughly. Mix dust in top 2 or 3 inches of soil with rake. Dust flower beds and lawns lightly for other small ants. Repeat in 14 days if necessary.
Pests in yards (Do not use on or around food plants)	Scorpions, centipedes, crickets, fleas, mole crickets, chiggers, ticks, army worms, sow bugs (pill bugs), grass termites	Dust area where the pests are found. Apply at the rate of 1 lb. to 1,000 sq. ft. Repeat in 12 to 14 days if necessary.

NOTE: Keep children and animals off treated areas until the material has been thoroughly washed into the soil, and the soil is completely dry. Birds feeding in treated areas may be killed.

CAUTION

Harmful if swallowed. Contact with skin can cause toxic symptoms. Avoid breathing dust. In case of contact with skin, wash with soap and water.

Avoid contamination of feed and foodstuffs.

Toxic to fish and wildlife. Keep out of any body of water. Birds feeding on treated areas may be killed. Do not contaminate water by cleaning of equipment, or disposal of waste.

This product is highly toxic to bees exposed to direct treatment or residues on crops. Protective information may be obtained from your Cooperative Agricultural Extension Service.

Do not reuse empty container, discard in a safe place.

Conditions of use are beyond seller's control. Seller's liability is limited to product's replacement or purchase price refund. Seller makes no warranty, express or implied, concerning product's use beyond claims on label.

Accepted With Comments

Plant or Area	Insects	Directions
Flowers such as chrysanthemums, roses, dahlias, ornamentals, zinnias	Thrips, grasshoppers, flea beetles, armyworms, leaf miners, cucumber beetles, cutworms	Dust plants thoroughly and repeat in 10 to 14 days if necessary.

1114

10% CHLORDANE DUST

KILLS ANTS, TICKS, EARWIGS, SOD WEBWORMS, CUTWORMS, SOW BUGS AND CERTAIN OTHER INSECTS IN LAWN AND GARDEN

ACTIVE INGREDIENT
10% 10-Chlordane
INERT INGREDIENTS
90%
EPA REG. NO. 105-100000-01

DO NOT USE INSIDE HOMES

CAUTION
KEEP OUT OF REACH OF CHILDREN

See back panel for additional cautions

U.S. DA. REG. NO. 539121

DISTRIBUTED BY SEARS, ROEBUCK AND CO.
CHICAGO, ILLINOIS 60607

DIRECTIONS FOR USE

Use only according to label instructions

Plant or Area	Insects	Directions
Lawns, turf	Fire ants and red harvester ants Other small ants	Dust hills thoroughly and mix dust in top 1" or 3 inches of soil with rake or hoe Dust area lightly. Repeat in 14 days if ants come back.
Yard	Scorpions, centipedes, mole crickets, crickets, fleas, earwigs, chiggers, ticks, fall armyworms, sow bugs (pill bugs), grass termites, and sod webworms or lawn moths	Dust at the rate of 1 lb. per 1,000 sq. ft. Repeat in 12 to 14 days or when necessary. Water lawn before application but do not water for several days thereafter.

CAUTION

Avoid inhalation of dust
Avoid contamination of feed and foodstuffs. Do not use inside homes
Keep children and pets off treated area until chlordane has been washed into soil and treated area is completely dry
This product is highly toxic to bees exposed to direct treatment or residues on crops. Protective information may be obtained from your Cooperative Agricultural Extension Service
This product will kill fish and wildlife. Birds and other wildlife in treated areas may be harmed. Keep out of any body of water. Apply this product only as specified on this label
Do not reuse empty container. Discard in a safe place.
Conditions of use are beyond seller's control. Seller's liability is limited to product's replacement. No money refund. Seller makes no warranty, express or implied, concerning product's use beyond what is stated.

FRONT

539-130
71% CHLORDANE
CONCENTRATE

539-130

ANTS, Termites, Cutworms, White Grubs, Fall Army Worms, Cricket, Grasshoppers, Scorpions, Sod Webworms, Chiggers, Fleas, Fireworms, Sawworms, Leaf beetles, Lace Bugs

ACTIVE INGREDIENTS:

Technical Chlordane*	4.0
Petroleum Distillates	14.24
INERT INGREDIENTS	15.04
Total	33.28

Contains 8 lbs. technical Chlordane per gallon
*Equivalent to 44.4% octachloro-4,7-methanotetrahydroindane and 29.6% related compounds

CAUTION: KEEP OUT OF REACH OF CHILDREN.
See back for additional cautions.

(71 11866) NET CONTENTS (4 oz)	USDA Reg.No. 539-130
(71 11867) " (8 oz)	" "
(71 11868) " (16 oz)	" "
(71 11869) " (1 qt)	" "
(71 1187) " (1 gal)	" "

SIDE

DISTRIBUTED BY SEARS, ROEBUCK AND CO., CHICAGO, ILL.

BACK

DIRECTIONS FOR USE

REGULAR MIXTURE: 1 gallon to 100 gallons water; 1 quart to 100; 1 pint to 50; 1/2 pint to 25; 3 ounces to 10; 1 tablespoon to 1 gallon water, except when directions state otherwise.

FOR ANTS, CUT ANTS, FIRE ANTS AND OTHER NESTING IN NON-CROP LAND OR NON-PASTURE AREAS SUCH AS LAWNS, CEMETERIES, RIGHTS-OF-WAY, VACANT LOTS: Pour 1 pint to 2 quarts in hole of ant nest and for cut ants 10 to 30 gallons of regular mixture. Also saturate surface of ant nest. Do not contaminate feed, foodstuff or drinking water with mixture. Repeat in 2 weeks if necessary.

LAWN PESTS: FOR ANTS, CUTWORMS, SOD WEBWORMS, FALL ARMYWORMS, CRICKETS, MOLE CRICKETS, TARANTULAS, SCORPIONS, FLEAS, CHIGGERS, WOOD TICKS, SOLE BUGS: Spray regular mixture at rate of 1 gallon per 100 square feet. Do not water lawn for several days afterwards. FOR WHITE GRUBS, WIREWORMS, LAWN TERMITES: Spray regular mixture at rate of 2 gallons per 100 square feet. Water lawn lightly after spraying. Repeat if necessary in 30 days. KEEP OUT OF ANY BODY OF WATER.

BACK CONTINUED

FLICKERS, STARLINGS, AND OTHER BIRDS THAT FEED IN GRASS AND WEEDS, LAY EGGS, BROWN BIRDS, JAYS, CROWS, HOUSE WREN, CHICKADEE, SP. OWLS, NORTHERN WOODPECKER: Spray plants thoroughly with regular mixture. Repeat in 10 to 14 days if necessary.

FRUIT AND VEGETABLES: FOR CURCULIO WORMS: Spray plants into fruit, spray trees thoroughly at 7 day intervals with regular mixture starting when 5% petals are open. Do not spray within 30 days of harvest.

POTATO BEETLES, FLEA BEETLES AND OTHER PESTS: Spray potatoes with regular mixture or 1/2 pint per 100 gallons water per acre of potatoes. Repeat in 10 to 12 days if necessary. Do not use this spray on other vegetables.

SUBTERRANEAN TERMITES: Spray water building with sufficient solution mixed 1 quart to 50 gallons water to soak into ground. Dig trench one foot deep around building in close proximity to foundation or 30 inches deep for buildings with deep foundations. Apply 2 gallons mixture per 5 linear feet in trench along outside of foundation walls, including entrance slabs and porches where foundation is not more than 12 to 18 inches deep. If over 15 to 18 inches deep up to 30 inches deep, apply 4 gallons per 5 linear feet of trench. Make annual inspection for reinfestation.

SARCOPTIC MANGE MITES AND LICE ON PETS: Wet animal thoroughly with freshly mixed regular mixture. Old solutions should not be saved. Do not spray cow if suckling young, nor on cats. Repeat in 2 weeks if necessary.

WARNING: Do not use on humans or cats. Contact with skin can cause toxic symptoms. Avoid breathing spray mist and skin contact. In case of spillage on skin, wash immediately with soap and water. Avoid contamination of feed and foodstuffs. Harmful if swallowed. Keep out of reach of children. Keep children and pets off treated lawns until this product is worked into the soil and the grass is thoroughly dry.

This product will kill fish and wildlife. Keep out of any body of water. Birds feeding on treated area may be killed.

Do not reuse empty container. Wash thoroughly with water and a detergent. Discard in a safe place.

Conditions of use are beyond seller's control. Seller's liability is limited to product's replacement or purchase price refund. Seller makes no warranty, express or implied, concerning product's use beyond claims on label.

FACTORY