



Treats 5,000 sq ft

6052



controls dandelions and these lawn weeds

chickweed	knotweed	plantain	white clover
...

How to Use

1. Mow lawn to 2 1/2 inches high. Water lawn well.

2. Apply Kancel to lawn in early morning or late afternoon. Walk slowly and broadcast evenly. Do not walk on lawn for 24 hours.

3. Water lawn well.

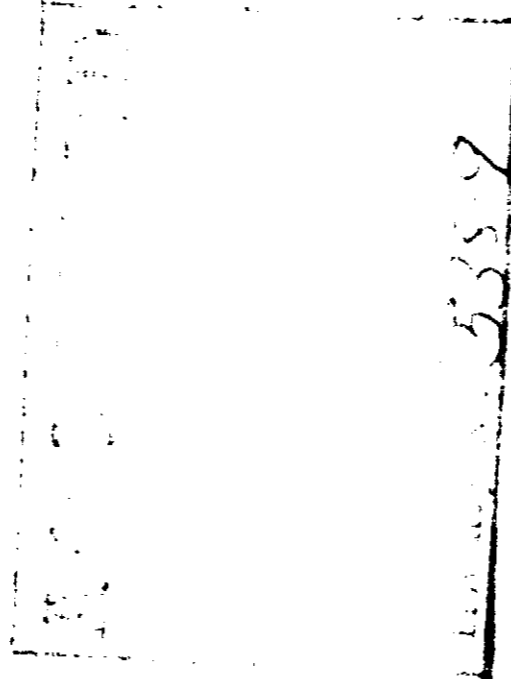
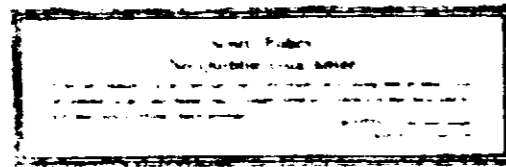
4. Mow lawn after 24 hours.

What to expect

Within 2 to 3 weeks, weeds will be dead or dying. For best results, repeat application every 4 to 6 weeks.

Free builder's service

Call 1-800-333-3333 for a free builder's service card.



6052



6052



Treats 5,000 sq ft

6052



Kancel

lawn weed control

controls dandelions,
buckhorn,
chickweed, knotweed,
plantain, white clover
and other weeds

(see complete list on the back panel)

Not for use on St. Augustine grass, carpetgrass or dichondra lawns

A problem-solving product from Scotts, the lawn people

NET WEIGHT 5 LBS (treats 5,000 sq ft)

CAUTION: KEEP OUT OF REACH OF CHILDREN

For more information, call 1-800-333-3333. For a complete list of weeds controlled, see the back panel.

Always use Kancel on a well-maintained lawn. Mow lawn to 2 1/2 inches high. Water lawn well. Apply Kancel to lawn in early morning or late afternoon. Walk slowly and broadcast evenly. Do not walk on lawn for 24 hours. Water lawn well. Mow lawn after 24 hours.

For more information, call 1-800-333-3333.



6052



6052

EPA Reg. No. 5337

Scotts
Kansel
lawn weed control

SO
LAW
PROB
Multi-use water/lawn

Scotts

Kansel

lawn weed control

controls dandelions,
buckhorn,
chickweed, knotweed,
plantain, white clover
and other weeds
(see complete list on the back panel)

Not for use on St Augustinegrass,
carpetgrass or dichondra lawns

A problem-solving product from Scotts, the lawn people

NET WEIGHT 5 LBS (treats 5,000 sq ft)

CAUTION: KEEP OUT OF REACH OF CHILDREN

Avoid contact with skin, eyes or clothing. In case of contact, flush with water. For eyes get medical attention. Avoid application on or near garden plants and flowers. Keep away from rootzone areas of shrubs and the branch spread of trees. Do not reuse container. Destroy when empty.

Do not contaminate water used for irrigation or domestic purposes.

Active ingredients: 2,4-Dichlorophenoxyacetic acid	2.95%
Dicamba (2-Methoxy-3,6-dichlorobenzoic acid)	11.48%
Inert ingredients	85.57%
Total: 100.00%	
EPA Reg. No. 5337-9-AA EPA Est. 538-OH-1	Product of USA
USC Reg. No. Pat No. 3,053,089	Marysville, Ohio 43040
OM 5337-9-AA-10	

Kansel
lawn weed control
Scotts