

524-537

02/07/2007
SUPPLEMENTAL LABEL 'G

1/2

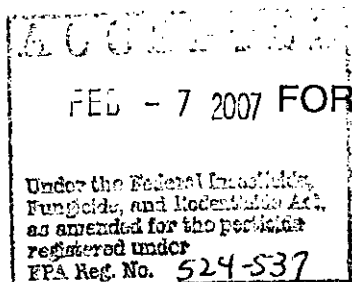
READ THE ENTIRE LABEL FOR ROUNDUP WEATHERMAX® HERBICIDE BEFORE PROCEEDING WITH THE USE DIRECTIONS CONTAINED IN THIS SUPPLEMENTAL LABELING.

When using Roundup WeatherMAX herbicide as permitted according to this supplemental labeling, read and follow all applicable directions, restrictions, and precautions on this supplemental labeling and on the label booklet provided with the pesticide container. This supplemental labeling must be in the possession of the user at the time of pesticide application.

Roundup WeatherMAX® Herbicide

EPA Reg. No. 524-537

Roundup WeatherMAX and Roundup Ready are registered trademarks of Monsanto Technology LLC.



FEB - 7 2007 FOR USE WITH ROUNDUP READY® CANOLA (WINTER)

Keep out of reach of children.

CAUTION!

In case of an emergency involving this product or for user safety information on this product, Call Collect, day or night (314) 694-4000.

DIRECTIONS FOR USE

It is a violation of Federal law to use this product in any manner inconsistent with its labeling.

This label must be in the possession of the user at the time of application.

See "GENERAL INFORMATION", "MIXING", "ANNUAL WEEDS RATE SECTION" and "PERENNIAL WEEDS RATE SECTION" of the label booklet for Roundup WeatherMAX herbicide for essential product performance information.

12.3 Roundup Ready Canola (Winter)

Roundup Ready Winter Canola is defined as those Roundup Ready canola varieties that are seeded in early fall and harvested the following spring or summer. Winter canola varieties are intended to enter a cold period dormancy in the winter.

TYPES OF APPLICATIONS: Preplant, At-Planting, Preemergence, Postemergence (In-crop)

GENERAL USE INSTRUCTIONS: Refer to the following table for the maximum application rates of this product with Roundup Ready canola (winter).

Maximum Application Rates	
Total of all Preplant, At-Planting, Preemergence applications	44 fluid ounces per acre
Total of all in-crop applications from emergence to canopy closure or prior to bolting in the spring	44 fluid ounces per acre

GENERAL PRECAUTIONS, RESTRICTIONS: See the "ROUNDUP READY CROPS" section of the product label for general precautionary instructions for use in Roundup Ready crops. See the "GENERAL INFORMATION" section of the product label for information on Maximum Application Rates.

Preplant, At-Planting, Preemergence

USE INSTRUCTIONS: This product may be applied before, during or after planting Roundup Ready winter canola.

PRECAUTIONS, RESTRICTIONS: Maximum quantity of this product that may be applied for all preplant, at-planting and preemergence applications combined is 44 fluid ounces per acre per season.

Postemergence (In-crop)

USE INSTRUCTIONS: This product may be applied to Roundup ready winter canola varieties from emergence to canopy closure in the fall and prior to bolting in the spring. Applications made during or after bolting may result in crop injury and yield loss. To maximize yield potential, make applications early to eliminate competing weeds.

Some weeds with multiple germination times, or suppressed (stunted) weeds, or weeds that have overwintered may require sequential applications of this product for control. The second application should be made after some regrowth has occurred and at least 60 days after a previous application of this product.

Single Application — Apply 16 to 22 fluid ounces of this product per acre in the fall. Applications in the fall should be made when weeds are small and actively growing. Use the higher rate in the recommended range when weed densities are high, when weeds have overwintered or

when weeds become large and well established. Applications of greater than 16 fluid ounces per acre prior to the 6-leaf stage may result in reduced crop growth in the fall. Avoid spray overlaps. Spray overlaps may result in temporary yellowing and/or growth reduction.

Sequential Applications — Apply 11 to 22 fluid ounces of this product per acre to 2-leaf or larger canola in the fall, followed by a sequential application at the same rate and at a minimum interval of 60 days, but before bolting in the spring. Sequential applications are recommended for early emerging annual weeds and winter emerging weeds such as downy brome, jointed goatgrass and ryegrass, and for weeds that have overwintered. This product will control or suppress most perennial weeds. For some perennial weeds, sequential applications may be required to reduce competition with the crop.

PRECAUTIONS, RESTRICTIONS: No more than two over-the-top broadcast applications may be made from crop emergence up to the onset of bolting, and the total in-crop application must not exceed 44 fluid ounces of this product per acre. Applications of greater than 16 fluid ounces per acre prior to the 6-leaf stage may result in reduced crop growth in the fall. Allow a minimum of 60 days between last application and harvest of canola grain. No waiting period is required between application and open grazing of livestock.

Read the "LIMIT OF WARRANTY AND LIABILITY" in the label booklet for Roundup WeatherMAX herbicide before using. These terms apply to this supplemental labeling and if these terms are not acceptable, return the product unopened at once.

©[year] MONSANTO COMPANY
ST. LOUIS, MISSOURI 63167
[print plate number]
[date]