

pg 1 of 2
PM 25 524-2893

ACCEPTED
NOV - 4 1987
Under the Federal Insecticide,
Fungicide, and Rodenticide Act,
as amended, for the pesticide
registered under
EPA Reg. No. 524-393

SPOUT SIDE

HANDLE SIDE

PRECAUTIONARY STATEMENTS

Hazards to Humans and Domestic Animals

Keep out of reach of children.

WARNING!

MAY BE FATAL IF INHALED.
HARMFUL IF SWALLOWED OR ABSORBED THROUGH SKIN

Do not breathe vapors.

Avoid contact with skin, eyes or clothing.

Wear rubber gloves when transferring and applying and when repairing or cleaning of equipment.

Wash thoroughly with soap and water after handling.

FIRST AID IF INHALED: remove victim to fresh air. If not breathing, give artificial respiration, preferably mouth to mouth. Call a physician.

IF ON SKIN: immediately flush with plenty of water for at least 15 minutes while removing contaminated clothing. Call a physician. Wash clothing before reuse.

IF SWALLOWED: induce vomiting immediately by giving two glasses of water and sticking finger down throat. Call a physician. DO NOT GIVE ANYTHING BY MOUTH TO AN UNCONSCIOUS PERSON.

In case of an emergency involving this product, Call Collect, day or night, (314) 694-4000.

Environmental Hazards

Avoid direct application to any body of water. Do not contaminate water by cleaning of equipment or disposal of wastes.

Do not apply when weather conditions favor drift from areas treated.

Storage and Disposal

Do not contaminate water, food or feed by storage or disposal.

STORAGE

STORE ABOVE 25°F TO PROTECT FROM FREEZING

Below 25°F, the product may freeze. If frozen, bring to room temperature and shake vigorously. Keep container closed to prevent spills and contamination.

DISPOSAL

Wastes of this pesticide may be fatal if inhaled and may be dangerous. Improper disposal of excess pesticide, spray mixture, or residue is a violation of Federal law. If these wastes cannot be disposed of by use according to label instructions, contact your State Pesticide or Environmental Control Agency, or the Hazardous Waste representative at the nearest EPA Regional Office for guidance.

Empied containers: clean, repair and product residue. Observe all labeled safety instructions until container is destroyed.

Do not reuse container. Triple rinse container, then puncture and dispose of in a sanitary landfill, or by incineration or, if allowed by state and local authorities, by burning. If burned, stay out of smoke.

MON 7325

BY
Monsanto

Flowable plant growth regulator
for warm season turfgrasses

Carefully follow detailed instructions in attached booklet

SHAKE WELL BEFORE USING

Read the entire label before using this product.

Use only according to label instructions.

REFORMULATION OR REPACKAGING IS PROHIBITED.

Read "LIMIT OF WARRANTY AND LIABILITY" before buying or using. If terms are not acceptable, return at once unopened.

Keep out of reach of children.

WARNING! Read precautions on side panel.

ACTIVE INGREDIENT¹:

Paclobotrazol [(±)-(R*,R*)-β-[(4-chlorophenyl)methyl]-α-(1,1-dimethylethyl)-1-H-1,2,4-triazole-1-ethanol]..... 22.9%

INERT INGREDIENTS:..... 77.1%
100.0%

¹Contains 240 grams/litre or 2 pounds/gallon of the active ingredient paclobotrazol.

NET 1 GAL

LIMIT OF WARRANTY AND LIABILITY

This Company warrants that this product conforms to the chemical description on the label and is reasonably fit for the purposes set forth in the Complete Directions for the label booklet ("Directions") when used in accordance with those Directions under the conditions described therein. NO OTHER EXPRESS OR IMPLIED WARRANTY OF FITNESS FOR PARTICULAR PURPOSE OR MERCHANTABILITY OR ANY OTHER EXPRESS OR IMPLIED WARRANTY IS MADE. This warranty is also subject to the conditions and limitations stated herein.

Buyer and all users shall promptly notify this Company of any claims whether based in contract, negligence, strict liability, other tort or otherwise.

Buyer and all users are responsible for all loss, damage or ineffectiveness from use or handling which results from conditions beyond the control of this Company, including, but not limited to, incompatibility with products other than those set forth in the Directions, unusual weather, weather conditions which are outside the range considered normal at the application site and for the time period when the product is applied, as well as weather conditions which are outside the application ranges set forth in the Directions, application in any manner not explicitly set forth in the Directions, moisture conditions outside the moisture range specified in the Directions, or the presence of products other than those set forth in the Directions in or on the soil or turf.

THE EXCLUSIVE REMEDY OF THE USER OR BUYER, AND THE LIMIT OF THE LIABILITY OF THIS COMPANY OR ANY OTHER SELLER FOR ANY AND ALL LOSSES, INJURIES OR DAMAGES RESULTING FROM THE USE OR HANDLING OF THIS PRODUCT (INCLUDING CLAIMS BASED IN CONTRACT, NEGLIGENCE, STRICT LIABILITY, OTHER TORT OR OTHERWISE) SHALL BE THE PURCHASE PRICE PAID BY THE USER OR BUYER FOR THE QUANTITY OF THIS PRODUCT INVOLVED, OR, AT THE OPTION OF THIS COMPANY OR ANY OTHER SELLER, THE REPLACEMENT OF SUCH QUANTITY OR, IF NOT ACQUIRED BY PURCHASE, REPLACEMENT OF SUCH QUANTITY. IN NO EVENT SHALL THIS COMPANY OR ANY OTHER SELLER BE LIABLE FOR ANY INCIDENTAL, CONSEQUENTIAL, OR SPECIAL DAMAGES.

The Buyer and all users are deemed to have accepted the terms of this LIMIT OF WARRANTY AND LIABILITY which may not be varied by any verbal or written agreement.

In case of an emergency involving this product, Call Collect, day or night, (314) 694-4000.

Product protected by U.S. Pat. No. 4,243,405
© MONSANTO COMPANY 1987

* Registered trademark of Monsanto Company

EPA Reg. No. 524-347

EPA Est. 32763 MO-3



Sold by MONSANTO COMPANY
AGRI-CHEMICALS DIVISION
ST. LOUIS, MISSOURI 63167 USA

MAP-2840.04D

PM 25
524-393

page 2 of 2

SPOUT SIDE

HANDLE SIDE

PRECAUTIONARY STATEMENTS

Hazards to Humans and Domestic Animals

Keep out of reach of children.

WARNING!

MAY BE FATAL IF INHALED.

HARMFUL IF SWALLOWED OR ABSORBED THROUGH SKIN

Do not breathe vapors.

Avoid contact with skin, eyes or clothing.

Wear rubber gloves when transferring and applying and when repairing or cleaning of equipment.

Wash thoroughly with soap and water after handling.

FIRST AID IF INHALED: remove victim to fresh air. If not breathing, give artificial respiration, preferably mouth-to-mouth. Call a physician.

IF ON SKIN: immediately flush with plenty of water for at least 15 minutes while removing contaminated clothing. Call a physician. Wash clothing, before reuse.

IF SWALLOWED: induce vomiting immediately by giving two glasses of water and sticking finger down throat. Call a physician. **NEVER GIVE ANYTHING BY MOUTH TO AN UNCONSCIOUS PERSON.**

In case of an emergency involving this product, Call Collect, day or night, (314) 694-4000.

Environmental Hazards

Avoid direct application to any body of water. Do not contaminate water by cleaning of equipment or disposal of wastes.

Do not apply when weather conditions favor drift from areas treated.

Storage and Disposal

Do not contaminate water, food or feed by storage or disposal.

STORAGE

STORE ABOVE 25°F TO PROTECT FROM FREEZING.

Below 25°F the product may freeze. If frozen, bring to room temperature and shake vigorously. Keep container closed to prevent spills and contamination.

DISPOSAL

Wastes of this pesticide may be fatal if inhaled and may be dangerous. Improper disposal of excess pesticide, spray mixture, or residue is a violation of Federal law. If these wastes cannot be disposed of by use according to label instructions, contact your State Pesticide or Environmental Control Agency, or the Hazardous Waste representative at the nearest EPA Regional Office for guidance.

Empty container retains vapor and product residue. Observe all labeled safeguards until container is destroyed.

Do not reuse container. Triple rinse container. Then puncture and dispose of in a sanitary landfill, or by incineration, or, if allowed by state and local authorities, by burning. If burned, stay out of smoke.



BY
Monsanto

**Flowable plant growth regulator
for warm season turfgrasses**

Carefully follow detailed instructions in attached booklet

SHAKE WELL BEFORE USING

Read the entire label before using this product.

Use only according to label instructions.

REFORMULATION OR REPACKAGING IS PROHIBITED.

Read "LIMIT OF WARRANTY AND LIABILITY" before buying or using. If terms are not acceptable, return at once unopened.

Keep out of reach of children.

WARNING! Read precautions on side panel.

ACTIVE INGREDIENT:

Paclobutrazol [(±)-(R*,R*)-β-[(4-chlorophenyl)

methyl]-α-(1,1-dimethylethyl)-1

H-1,2,4-triazole-1-ethanol]..... 22.9%

INERT INGREDIENTS:..... 77.1%

100.0%

*Contains 240 grams/litre or 2 pounds/gallon of the active ingredient paclobutrazol.

NET 1 GAL

LIMIT OF WARRANTY AND LIABILITY

This Company warrants that this product conforms to the claims of description on the label and is reasonably fit for the purposes set forth in the Complete Directions for Use label booklet ("Directions") when used in accordance with those Directions under the conditions described therein. NO OTHER EXPRESS OR IMPLIED WARRANTY OF FITNESS FOR PARTICULAR PURPOSE OR MERCHANTABILITY OR ANY OTHER EXPRESS OR IMPLIED WARRANTY IS MADE. This warranty is also subject to the conditions and limitations stated herein.

Buyer and all users shall promptly notify this Company of any claims whether based in contract, negligence, strict liability, other tort or otherwise.

Buyer and all users are responsible for all loss, damage or ineffectiveness from use or handling which results from conditions beyond the control of this Company, including, but not limited to, incompatibility with products other than those set forth in the Directions, unusual weather, weather conditions which are outside the range considered normal at the application site and for the time period when the product is applied, as well as weather conditions which are outside the application ranges set forth in the Directions, application in any manner not explicitly set forth in the Directions, moisture conditions outside the moisture range specified in the Directions, or the presence of products other than those set forth in the Directions in or on the soil or turf.

THE EXCLUSIVE REMEDY OF THE USER OR BUYER, AND THE LIMIT OF THE LIABILITY OF THIS COMPANY OR ANY OTHER SELLER FOR ANY AND ALL LOSSES, INJURIES OR DAMAGES RESULTING FROM THE USE OR HANDLING OF THIS PRODUCT (INCLUDING CLAIMS BASED IN CONTRACT, NEGLIGENCE, STRICT LIABILITY, OTHER TORT OR OTHERWISE) SHALL BE THE PURCHASE PRICE PAID BY THE USER OR BUYER FOR THE QUANTITY OF THIS PRODUCT INVOLVED, OR, AT THE ELECTION OF THIS COMPANY OR ANY OTHER SELLER, THE REPLACEMENT OF SUCH QUANTITY OR, IF NOT ACQUIRED BY PURCHASE, REPLACEMENT OF SUCH QUANTITY IN NO EVENT SHALL THIS COMPANY OR ANY OTHER SELLER BE LIABLE FOR ANY INCIDENTAL, CONSEQUENTIAL, OR SPECIAL DAMAGES.

The Buyer and all users are deemed to have accepted the terms of this LIMIT OF WARRANTY AND LIABILITY which may not be varied by any verbal or written agreement.

In case of an emergency involving this product, Call Collect, day or night, (314) 694-4000.

Product protected by U.S. Pat. No. 4,243,805
©MONSANTO COMPANY 1987

* Registered trademark of Monsanto Company.

EPA Reg. No. 524-347

EPA Est. 32761 M03



See MONSANTO COMPANY
AGRICULTURAL PRODUCTS
ST. LOUIS, MISSOURI 63167 USA

MAP-2840.04D

SHAKE WELL BEFORE USING

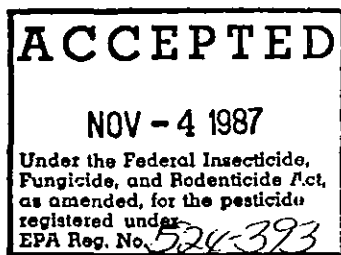
Complete Directions for Use

MON 7325 is a trademark of the Monsanto Company

EPA Reg. No. 524

1987-I

MAP-2836



Product protected by U.S. Pat. No. 4,243,405

©MONSANTO COMPANY 1987

SOLD BY MONSANTO COMPANY
AGRICULTURAL PRODUCTS
ST. LOUIS, MISSOURI 63167 U.S.A.



for the purposes set forth in the Complete Directions for Use label booklet ("Directions") when used in accordance with those Directions under the conditions described therein. NO OTHER EXPRESS OR IMPLIED WARRANTY OF FITNESS FOR PARTICULAR PURPOSE OR MERCHANTABILITY OR ANY OTHER EXPRESS OR IMPLIED WARRANTY IS MADE. This warranty is also subject to the conditions and limitations stated herein.

Buyers and all users shall promptly notify this Company of any claims weather based in contract, negligence, strict liability, other tort or otherwise.

Buyer and all users are responsible for all loss or damage from use or handling which results from conditions beyond the control of this Company, including, but not limited to incompatibility with products other than those set forth in the Directions unusual weather, weather conditions which are outside the range considered normal at the application site and for the time period when the product is applied as well as weather conditions which are outside the application ranges set forth in the Directions, application in any manner not explicitly set forth in the Directions, moisture conditions outside the moisture range specified in the Directions, or the presence of products other than those set forth in the Directions in or on the soil or turf.

THE EXCLUSIVE REMEDY OF THE USER OR BUYER, AND THE LIMIT OF THE LIABILITY OF THIS COMPANY OR ANY OTHER SELLER FOR ANY AND ALL LOSSES, INJURIES OR DAMAGES RESULTING FROM THE USE OR HANDLING OF THIS PRODUCT (INCLUDING CLAIMS BASED IN CONTRACT, NEGLIGENCE, STRICT LIABILITY, OTHER TORT OR OTHERWISE) SHALL BE THE PURCHASE PRICE PAID BY THE USER OR BUYER FOR THE QUANTITY OF THIS PRODUCT INVOLVED OR, AT THE ELECTION OF THIS COMPANY OR ANY OTHER SELLER, THE REPLACEMENT OF SUCH QUANTITY OR, IF NOT ACQUIRED BY PURCHASE, REPLACEMENT OF SUCH QUANTITY. IN NO EVENT SHALL THIS COMPANY OR ANY OTHER SELLER BE LIABLE FOR ANY INCIDENTAL, CONSEQUENTIAL OR SPECIAL DAMAGES.

The Buyer and all users are deemed to have accepted the terms of this LIMIT OF WARRANTY AND LIABILITY which may not be varied by any verbal or written agreement.

Do not breathe vapors.

Avoid contact with skin, eyes or clothing

Wear rubber gloves when transferring and applying, and when repairing or cleaning of equipment.

Wash thoroughly with soap and water after handling.

FIRST AID: IF INHALED, remove victim to fresh air. If not breathing, give artificial respiration, preferably mouth-to-mouth. Call a physician.

IF ON SKIN, immediately flush with plenty of water for at least 15 minutes while removing contaminated clothing. Call a physician. Wash clothing before reuse.

IF SWALLOWED, induce vomiting immediately by giving two glasses of water and sticking finger down throat. Call a physician. NEVER GIVE ANYTHING BY MOUTH TO AN UNCONSCIOUS PERSON.

In case of an emergency involving this product, Call Collect, day or night, (314) 694-4000.

Environmental Hazards

Avoid direct application to any body of water. Do not contaminate water by cleaning of equipment or disposal of wastes.

Do not apply when weather conditions favor drift from areas treated.

Storage and Disposal

Do not contaminate water, food, or feed by storage or disposal.

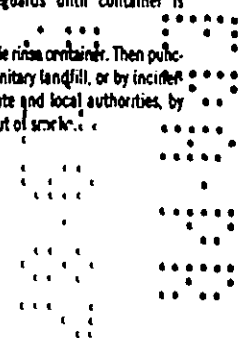
STORAGE:
STORE ABOVE 25°F. TO PROTECT FROM FREEZING

If frozen, bring to room temperature and shake vigorously. Keep container closed to prevent spills and contamination.

DISPOSAL:
Wastes of this pesticide may be fatal if inhaled and may be dangerous. Improper disposal of excess pesticide, spray mixture, or rinsate is a violation of Federal law. If these wastes cannot be disposed of by use according to label instructions, contact your State Pesticide or Environmental Control Agency, or the Hazardous Waste representative at the nearest EPA Regional Office for guidance.

Emptied container retains vapor and product residue. Observe all labeled safeguards until container is destroyed.

Do not reuse container. Triple rinse container. Then puncture and dispose of in a sanitary landfill, or by incineration, or, if allowed by state and local authorities, by burning. If burned, stay out of smoke.



ACTIVE INGREDIENTS*:

- Paclobotrazol [(±)-(R*)-R)-β-(4-chlorophenyl)methyl]-α-(1,1-dimethylethyl)-1-H-1,2,4-triazole-1-ethanol 22.9%
- INERT INGREDIENTS:** 77.1%
- 100.0%

*Contains 240 grams/litre or 2 pounds/gallon of the active ingredient paclobotrazol.
Product protected by U.S. Pat. No. 4,243,405

GENERAL INFORMATION

This product regulates the growth of the listed turf-grasses. This product is for use on frequently mowed turf. Treatments made in accordance with this label will reduce grass growth for up to 10 weeks. This product suppresses but does not control weeds and should be used in conjunction with appropriate herbicides where necessary. For best results, good turf management practices for diseases and insects are required to maintain turfgrass quality.

Do not apply this product through any type of irrigation system.

Moderate soil moisture conditions should be present before and after application to achieve best regulating effect (see precaution concerning saturated soil conditions under "LIMITATIONS"). After treatment, continue mowing as needed to provide a neat, trimmed appearance.

FOLLOWING TREATMENT, KEEP DOMESTIC ANIMALS AND PEOPLE OFF TREATED AREAS UNTIL FOLIAGE HAS DRIED.

TURFGRASSES REGULATED

When applied as directed under the conditions described, this product will regulate the growth of the following turfgrass species:

- Hybrid Bermudagrass
Cynodon dactylon
- St. Augustinegrass
Stenotaphrum secundatum

DIRECTIONS FOR USE

It is a violation of Federal law to use this product in any manner inconsistent with its labeling.

This product will reduce vertical growth and mowing requirements for 7 to 10 weeks on hybrid bermudagrass and St. Augustinegrass turf areas.

Use on well-maintained, established and actively growing hybrid bermudagrass fairways and St. Augustinegrass turf areas that are on regular fertilization programs.

For best results, apply this product to green and actively growing turfgrass after the grass has resumed spring growth and has developed the desired appearance. Application may be made before or after mowing. Delay mowing following an application of this product until irrigation or rainfall of 0.25 inch or more has washed this product to the soil surface. Treatments may be made prior to full greenup and are effective in reducing growth but may delay greenup and reduce apparent density. Before treating turfgrass that has been or is under stressed conditions, allow turf to resume active growth prior to treatment.

if an extended growth-suppression period is desired, a repeat application at recommended rates may be made to actively growing turfgrasses 10 to 12 weeks after the first application.

Sequential application made too soon after the first application, or preceding periods of reduced growth due to heat or drought, may lead to turf thinning due to excessive growth suppression. To maintain turf quality, combine application of this product with good turf management practices.

Grass growth will be reduced but not eliminated following treatment with this product. When a trim-mowing is required, avoid scalping. Mower blades should be adjusted and maintained in a sharpened condition to avoid damage to leaf tips which may cause discoloration.

This product may be applied twice annually, in the late spring after the turf has completely greened-up and filled in following any winter damage, and again in the summer.

This product should be applied at the following broadcast application rates:

SOIL TYPE	FLUID OUNCES/ACRE
Sandy	36
Loam	36 to 48
Clay	46 to 64

A single repeat application can be made within same growing season, but no sooner than 10 weeks following the initial application.

NOTE: Use properly calibrated sprayers. Improper rates may cause undesirable turf growth control and areas may discolor temporarily.

To be effective, this product must reach the soil and be taken up by the roots of the plant. For best results, moderate rainfall or irrigation (0.25 inch or more) should occur within 5 days following application and before the first trim mowing to assure the product is washed off the leaves.

MIXING INSTRUCTIONS

1. Shake well before using.
2. Fill the tank with three-fourths of the desired volume of water or fluid fertilizer (if desired). Start agitation.
3. Add this product to the spray tank.
4. Add the remainder of the water or fluid fertilizer (if desired).
5. Good agitation is required at all times to maintain uniform spray solution until the contents of the tank are sprayed.
6. If the spray solution has been left in the tank for any length of time, mix thoroughly again to resuspend before spraying.
7. Apply the spray solution on the same day as mixing.

APPLICATION EQUIPMENT AND CALIBRATION

For best results, application equipment must be calibrated and applications must be uniform and within the recommended rate range. Avoid excessive overlap, but ensure sufficient coverage to avoid streaking or skips. Avoid applications during windy conditions or under other conditions where drift is likely to occur. Drift can suppress growth of plants on which treatment is not intended, and can cause application to be streaked and uneven, reducing the desired effectiveness of this product.

LIMITATIONS

This product should not be applied to newly planted turf-grass until the turfgrass has been established for at least 6 months. This will allow the turf sufficient time to develop lateral roots and begin to tiller. Wait at least 2 weeks following an application of this product before overseeding or planting new turf in a treated area.

On newly sodded or sprung turf, delay treatment until the grass has rooted firmly. Delay springing for at least 4 weeks after an application has been made.

Reduction in growth and development of treated turf-grass may occasionally result in a less dense appearance and a slight change in turfgrass color. These responses are usually temporary and a darker-than-normal green color will usually develop.

Avoid treating turf under stress—including turf in high traffic areas, stressed by disease or insects, or under weather conditions adverse to growing of turfgrasses. Delay treatment until conditions are favorable and the turf is actively growing.

Where large areas of the desirable turf have been thinned from winter damage, disease, or insects, withhold application until desired fill-in and rooting of the turf stand is achieved.

Heavy rainfall or irrigation after application in areas where the soil is already saturated may cause this product to move laterally on slopes and collect in low areas. These areas may undergo greater growth suppression for a longer period of time. To avoid this, do not apply when the soil is already saturated.

This product is not for use on lawns, putting greens or turf areas maintained like putting greens.

This product is not recommended for use on common bermudagrass.

Do not apply this product through irrigation systems or with aerial application equipment.

Use of this product near shrubs, fruit trees, or flowers may result in growth suppression of these species.

During high temperature and/or low soil moisture conditions, liquid fertilizer solutions may cause leaf burn.

Do not allow domestic animals to feed or forage on treated areas. Do not use grass clippings for animal feed or mulching of fruit and vegetables. Grass clippings may be used for mulching around trees or ornamental shrubs not used for food production. Mulch should not be used in flower beds or other areas where plants are grown from seeds.

MAP-2836

EPA Reg No. 524.

In case of an emergency involving this product
Call Collect, day or night, (314) 694-4000

©MONSANTO COMPANY 1987

SOLO BY MONSANTO COMPANY
AGRICULTURAL PRODUCTS
ST. LOUIS, MISSOURI 63167, U.S.A.



PM 25
524-393

Page 1 of 2

ACCEPTED
NOV - 4 1987
Under the Federal Insecticide,
Fungicide, and Rodenticide Act,
as amended, for the pesticide
registered under
EPA Reg. No. 524-393

MAP-2840.05
EPA Est.

MON 7325

BY Monsanto

Flowable plant growth regulator for warm season turfgrasses

Carefully follow detailed instructions in attached booklet

SHAKE WELL BEFORE USING

Read the entire label before using this product.

Use only according to label instructions.

REFORMULATION OR REPACKAGING IS PROHIBITED.

Read "LIMIT OF WARRANTY AND LIABILITY" before buying or using. If terms are not acceptable, return at once unopened.

ACTIVE INGREDIENT*:

Pacllobutrazol [(±)-(R*,R*)-β-[(4-chlorophenyl)methyl]-α-(1,1-dimethylethyl)-1 H-1,2,4-triazole-1-ethanol]

INERT INGREDIENTS:

22.9%
77.1%
100.0%

*Contains 240 grams/litre or 2 pounds/gallon of the active ingredient pacllobutrazol.

Keep out of reach of children.

WARNING! Read precautions on side panel.

FOUR ^{ONE} GAL UNITS

PRECAUTIONARY STATEMENTS

Hazards to Humans and Domestic Animals

Keep out of reach of children.

WARNING!

**MAY BE FATAL IF INHALED
HARMFUL IF SWALLOWED OR ABSORBED THROUGH SKIN**

Do not breathe vapors.

Avoid contact with skin, eyes or clothing.

Wear rubber gloves when transferring and applying and when repairing or cleaning of equipment.

Wash thoroughly with soap and water after handling.

FIRST AID: IF INHALED: remove victim to fresh air. If not breathing, give artificial respiration, preferably mouth-to-mouth. Call a physician.

IF ON SKIN: immediately flush with plenty of water for at least 15 minutes while removing contaminated clothing. Call a physician. Wash clothing before reuse.

IF SWALLOWED: induce vomiting immediately by giving two glasses of water and sticking finger down throat. Call a physician. **NEVER GIVE ANYTHING BY MOUTH TO AN UNCONSCIOUS PERSON.**

In case of an emergency involving this product, Call Collect, day or night,
(314) 694-4000.

Environmental Hazards

Avoid direct application to any body of water. Do not contaminate water by cleaning of equipment or disposal of wastes.

Do not apply when weather conditions favor drift from areas treated.

Storage and Disposal

Do not contaminate water, food or feed by storage or disposal.

STORAGE:

STORE ABOVE 25°F TO PROTECT FROM FREEZING.

Below 25°F the product may freeze. If frozen, bring to room temperature and shake vigorously. Keep container closed to prevent spills and contamination.

DISPOSAL:

Wastes of this pesticide may be fatal if inhaled and may be dangerous. Improper disposal of excess pesticide, spray mixture, or mixtures is a violation of Federal law. If these wastes cannot be disposed of by use according to label instructions, contact your State Pesticide or Environmental Control Agency, or the Hazardous Waste representative at the nearest EPA Regional Office for guidance.

Employed container retains water and product residue. Observe all labeling safeguards until container is destroyed.

Do not reuse container. Triple rinse container. Then puncture and depress in a safety landfill, or by incineration, or, if allowed by state and local authorities, by burning. If burned, stay out of smoke.

BEST AVAILABLE COPY

P9 3 0/3

LIMIT OF WARRANTY AND LIABILITY

The Company warrants that this product conforms to the chemical description on the label and is reasonably fit for the purposes set forth in the Complete Directions for Use (the label booklet "Directions") when used in accordance with these Directions under the conditions described therein. **NO OTHER EXPRESS OR IMPLIED WARRANTY OF FITNESS FOR PARTICULAR PURPOSE OR MERCHANTABILITY OR ANY OTHER EXPRESS OR IMPLIED WARRANTY IS MADE.** This warranty is also subject to the conditions and limitations stated herein.

Buyer and all users shall promptly notify the Company of any claims whether based in contract, negligence, strict liability, other tort or otherwise.

Buyer and all users are responsible for all loss, damage or ineffectiveness from use or handling which results from conditions beyond the control of this Company, including, but not limited to, incompatibility with products other than those set forth in the Directions, unusual weather, weather conditions which are outside the range considered normal at the application site and for the time period when the product is applied, as well as weather conditions which are outside the application ranges set forth in the Directions, application in any manner not explicitly set forth in the Directions, moisture conditions outside the moisture range specified in the Directions, or the presence of products other than those set forth in the Directions in or on the soil or turf.

THE EXCLUSIVE REMEDY OF THE USER OR BUYER, AND THE LIMIT OF THE LIABILITY OF THIS COMPANY OR ANY OTHER SELLER FOR ANY AND ALL LOSSES, INJURIES OR DAMAGES RESULTING FROM THE USE OR HANDLING OF THIS PRODUCT (INCLUDING CLAIMS BASED IN CONTRACT, NEGLIGENCE, STRICT LIABILITY, OTHER TORT OR OTHERWISE) SHALL BE THE PURCHASE PRICE PAID BY THE USER OR BUYER FOR THE QUANTITY OF THIS PRODUCT INVOLVED. OR, AT THE ELECTION OF THIS COMPANY OR ANY OTHER SELLER, THE REPLACEMENT OF SUCH QUANTITY OR IF NOT ACQUIRED BY PURCHASE, REPLACEMENT OF SUCH QUANTITY IN NO EVENT SHALL THIS COMPANY OR ANY OTHER SELLER BE LIABLE FOR ANY INCIDENTAL, CONSEQUENTIAL OR SPECIAL DAMAGES.

The Buyer and all users are deemed to have accepted the terms of this **LIMIT OF WARRANTY AND LIABILITY** which may not be varied by any verbal or written agreement.

In case of an emergency involving this product, Call Collect, day or night,
(314) 694-4000

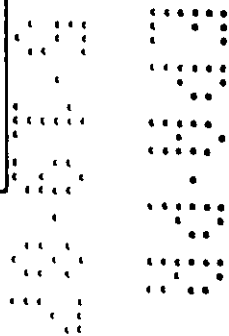
Product protected by U.S. Pat. No. 4,243,005
© MONSANTO COMPANY 1987
* Registered trademark of Monsanto Company

EPA Reg. No. 524



Sold by MONSANTO COMPANY
AGRICULTURAL PRODUCTS
ST. LOUIS, MISSOURI 63167 U.S.A.

BEST AVAILABLE COPY



PM 25
524-343

page 1 of 2

DO NOT
HANDLE, STORE

SPOUT SIDE

ACCEPTED
NOV - 4 1987
Under the Federal Insecticide, Fungicide, and Rodenticide Act, as amended, for the pesticide registered under EPA Reg. No. 524-343

PRECAUTIONARY STATEMENTS

Hazards to Humans and Domestic Animals

Keep out of reach of children
WARNING!
MAY BE FATAL IF INHALED.
HARMFUL IF SWALLOWED OR ABSORBED THROUGH SKIN.
Do not breathe vapors.
Avoid contact with skin, eyes or clothing.
Wear rubber gloves when transferring and applying and when repairing or cleaning of equipment.
Wash thoroughly with soap and water after handling.
FIRST AID IF INHALED: remove victim to fresh air. If not breathing, give artificial respiration, preferably mouth-to-mouth. Call a physician.
IF ON SKIN: immediately flush with plenty of water for at least 15 minutes while removing contaminated clothing. Call a physician. Wash clothing before reuse.
IF SWALLOWED, induce vomiting immediately by giving two glasses of water and sticking finger down throat. Call a physician. **NEVER GIVE ANYTHING BY MOUTH TO AN UNCONSCIOUS PERSON.**
In case of an emergency involving this product, Call Collect, day or night. (314) 694-4000

Environmental Hazards

Avoid direct application to any body of water. Do not contaminate water by cleaning of equipment or disposal of wastes.
Do not apply when weather conditions favor drift from areas treated.

Storage and Disposal

Do not contaminate water, food or feed by storage or disposal.
STORAGE:
STORE ABOVE 25°F TO PROTECT FROM FREEZING.
Below 25°F the product may freeze. If frozen, bring to room temperature and shake vigorously. Keep container closed to prevent spills and contamination.
DISPOSAL:
Wastes of this pesticide may be fatal if inhaled and may be dangerous. Improper disposal of excess pesticide, spray mixture, or residue is a violation of Federal law. If these wastes cannot be disposed of by use according to label instructions, contact your State Pesticide or Environmental Control Agency, or the Hazardous Waste representative at the nearest EPA Regional Office for guidance.
Emptied container retains vapor and product residue. Observe all labeled safeguards until a container is destroyed.
Do not reuse container. Triple rinse container, then puncture and dispose of in a sanitary landfill, or by incineration, or, if allowed by state and local authorities, by burning. If burned, stay out of smoke.

MON 7325

BY Monsanto

Flowable plant growth regulator
for warm season turfgrasses

Carefully follow detailed instructions in attached booklet

SHAKE WELL BEFORE USING

Read the entire label before using this product.
Use only according to label instructions.
REFORMULATION OR REPACKAGING IS PROHIBITED
Read "LIMIT OF WARRANTY AND LIABILITY" before buying or using. If terms are not acceptable, return at once unopened.

ACTIVE INGREDIENTS:
Paclobutrazol [(±)(R,S)] (1-chlorophenyl)methyl-1-[[1-dimethyl(phenyl)-1H-1,2,4-triazole-5-ylidene]ethanone] 22.9%
INERT INGREDIENTS: 77.1%
100.0%

*Contains 240 grams/lb or 2 pounds/gallon of the active ingredient paclobutrazol.

Keep out of reach of children.

WARNING!

Read precautions on side panel

NET 32 fl. oz.
((1 qt))

LIMIT OF WARRANTY AND LIABILITY
This Company warrants that this product conforms to the label and is reasonably fit for the purposes set forth for the label booklet ("Directions") when used in accordance with the conditions described therein. **NO OTHER WARRANTY OF FITNESS FOR PARTICULAR PURPOSE OR OTHER EXPRESS OR IMPLIED WARRANTY IS MADE** to the conditions and limitations stated herein.
Buyer and all users shall promptly notify this Company in writing in the event of crop loss, injury, or other damage in connection with the use of this product. In such event, Buyer and all users are responsible for all loss, damage or handling which results from conditions beyond the control of this Company, including, but not limited to, incompatibility with products or chemicals, unusual weather, weather conditions not contemplated in the Directions, application or use of the product in the Directions, moisture conditions outside the moisture range specified in the Directions, application in any manner not specified in the Directions, or the presence of products other than those set forth on the label.
THE EXCLUSIVE REMEDY OF THE USER OR BUYER, AND OF THIS COMPANY OR ANY OTHER SELLER FOR ANY DAMAGES RESULTING FROM THE USE OR HANDLING OF THIS PRODUCT (INCLUDING CLAIMS BASED ON CONTRACT, NEGLIGENCE OR TORT OR OTHERWISE) SHALL BE THE PURCHASE PRICE PAID BY THE BUYER FOR THE QUANTITY OF THIS PRODUCT INVOLVED. THIS COMPANY OR ANY OTHER SELLER, THE BUYER, OR IF NOT ACQUIRED BY PURCHASE, REPLACEMENT OR OTHERWISE SHALL THIS COMPANY OR ANY OTHER SELLER INCUR NO LIABILITY FOR CONSEQUENTIAL OR SPECIAL DAMAGES.
The Buyer and all users are deemed to have accepted this Company's **WARRANTY AND LIABILITY** which may not be varied by any oral agreement.

In case of an emergency involving this product, call collect, day or night, (314) 694-4000

Product protected by U.S. Pat. No. 4,743,405
© MONSANTO COMPANY 1987

*Registered Trademark of Monsanto Company



SOLE MONSANTO CO. AGRICULTURAL PRODUCTS DIVISION ST. LOUIS, MISSOURI 63166

EPA Est. 32761 MD-3

MON 7325

Monsanto

Keep out of reach of children.
WARNING! Read precautions on side panel.

ACTIVE INGREDIENT

Paclobutrazol [(±)(R*-R*)]-(4-chlorophenyl-
methyl)-(1,1-dimethylethyl)-1-ethanol] 22.9%
 INERT INGREDIENTS 77.1%

EPA Reg. No. 524-347

SAMPLE NOT FOR SALE

Monsanto Company © 1987

PRECAUTIONARY STATEMENTS

Hazards to Humans and Domestic Animals
 Keep out of reach of children.
WARNING! MAY BE FATAL IF INHALED. HARMFUL IF SWALLOWED OR ABSORBED THROUGH SKIN.
 Do not breathe vapors. Avoid contact with skin, eyes or clothing. Wear rubber gloves when transferring and applying and when repairing or cleaning of equipment.
 Wash thoroughly with soap and water after handling.
FIRST AID: IF INHALED, remove victim to fresh air. If not breathing, give artificial respiration, preferably mouth-to-mouth. Call a physician.
 IF ON SKIN, immediately flush with plenty of water for at least 15 minutes while removing contaminated clothing. Call a physician. Wash clothing before reuse.
 IF SWALLOWED, induce vomiting immediately by drinking two glasses of water and sticking finger down throat. Call a physician. NEVER GIVE ANYTHING BY MOUTH TO AN UNCONSCIOUS PERSON.
 In case of an emergency involving this product, Call Collect, day or night, (314) 694-4000.

Storage and Disposal
 Do not contaminate water, food, or feed by storage or disposal.
STORAGE: STORE ABOVE 25°F. TO PROTECT FROM FREEZING. If frozen, bring to room temperature and shake vigorously. Keep container closed to prevent spills and contamination.
DISPOSAL: Wastes of this pesticide may be fatal if inhaled and may be dangerous. Improper disposal of excess pesticide, spray mixture, or rinsate is a violation of Federal law. If these wastes cannot be disposed of by use according to label instructions, contact your State Pesticide or Environmental Control Agency, or the Hazardous Waste representative of the nearest EPA Regional Office for guidance.
 Empty container retains vapor and product residue. Observe all labeled safeguards until container is destroyed.
 Do not reuse container. Triple rinse container, then puncture and dispose of in a sanitary landfill, or by incineration, or, if allowed by state and local authorities, by burning. If burned, stay out of smoke.

ACCEPTED

NOV - 4 1987

Under the Federal Insecticide, Fungicide, and Rodenticide Act, as amended, for the pesticide registered under EPA Reg. No. 524-393

OUTER TUBE LABEL

PRECAUTIONARY STATEMENTS

Hazards to Humans and Domestic Animals

Keep out of reach of children.

WARNING!

MAY BE FATAL IF INHALED.
 HARMFUL IF SWALLOWED OR ABSORBED THROUGH SKIN.

Do not breathe vapors.

Avoid contact with skin, eyes or clothing.

Wear rubber gloves when transferring and applying and when repairing or cleaning of equipment.

Wash thoroughly with soap and water after handling.

FIRST AID: IF INHALED, remove victim to fresh air. If not breathing, give artificial respiration, preferably mouth-to-mouth. Call a physician.

IF ON SKIN, immediately flush with plenty of water for at least 15 minutes while removing contaminated clothing. Call a physician. Wash clothing before reuse.

IF SWALLOWED, induce vomiting immediately by drinking two glasses of water and sticking finger down throat. Call a physician. NEVER GIVE ANYTHING BY MOUTH TO AN UNCONSCIOUS PERSON.

In case of an emergency involving this product, Call Collect, day or night, (314) 694-4000.

EPA Reg. No. 524

EPA Est.

Storage and Disposal

Do not contaminate water, food, or feed by storage or disposal.

STORAGE:**STORE ABOVE 25°F. TO PROTECT FROM FREEZING.**

Below 25°F, product may freeze. If frozen, bring to room temperature and shake vigorously. Keep container closed to prevent spills and contamination.

DISPOSAL:

Wastes of this pesticide may be fatal if inhaled and may be dangerous. Improper disposal of excess pesticide, spray mixture, or rinsate is a violation of Federal law. If these wastes cannot be disposed of by use according to label instructions, contact your State Pesticide or Environmental Control Agency, or the Hazardous Waste representative of the nearest EPA Regional Office for guidance.

Empty container retains vapor and product residue. Observe all labeled safeguards until container is destroyed.

Do not reuse container. Triple rinse container. Then puncture and dispose of in a sanitary landfill, or by incineration, or, if allowed by state and local authorities, by burning. If burned, stay out of smoke.

Sold by MONSANTO COMPANY
 AGRICULTURAL PRODUCTS
 ST. LOUIS, MISSOURI 63167



MAP-2840 01R

MON 7325

Monsanto

Keep out of reach of children.

WARNING! Read precautions on side panel.

ACTIVE INGREDIENT:

Paclobutrazol [(±)(R*-R*)]-(4-chlorophenyl-
methyl)-(1,1-dimethylethyl)-1-ethanol] 22.9%
 INERT INGREDIENTS 77.1%

100.0%

©MONSANTO COMPANY 1987

*Registered trademark of Monsanto Company

U.S. Pat. No. 4,243,405

SAMPLE NOT FOR SALE NET 2 fl. oz.

PM 25
524-393

Pg 1 of 3

ACCEPTED
NOV - 4 1987
Under the Federal Insecticide,
Fungicide, and Rodenticide Act,
as amended, for the pesticide
registered under
EPA Reg. No. 524-393

MAP-2840.03
EPA Est.

MON 7325

BY Monsanto

Flowable plant growth regulator for warm season turfgrasses

Carefully follow detailed instructions in attached booklet

SHAKE WELL BEFORE USING

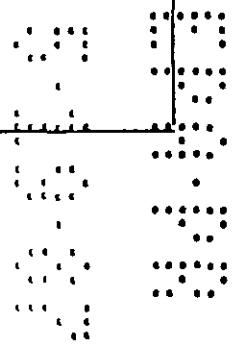
Read the entire label before using this product.
Use only according to label instructions.
REFORMULATION OR REPACKAGING IS PROHIBITED.
Read "LIMIT OF WARRANTY AND LIABILITY" before buy-
ing or using. If terms are not acceptable, return it once
unopened.

ACTIVE INGREDIENT:	
Pactolabrazol [(±)-(R*,R*),1-(4-chlorophenyl)- methyl]-4-(1,1-dimethylethoxy)-1	
H-1,2,4-triazole-1-ethanol	22.9%
INERT INGREDIENTS	77.1%
	100.0%

Contains 240 grams/litre or 2 pounds/gallon of the ac-
tive ingredient pactolabrazol.

Keep out of reach of children.
WARNING! Read precautions
on side panel

12 ³²/₃₂ UNITS



PRECAUTIONARY STATEMENTS

Hazards to Humans and Domestic Animals

Keep out of reach of children.

WARNING!

**MAY BE FATAL IF INHALED.
HARMFUL IF SWALLOWED OR ABSORBED THROUGH SKIN**

Do not breathe vapors.

Avoid contact with skin, eyes or clothing.

Wear rubber gloves when transferring and applying and when repairing or cleaning of equipment.

Wash thoroughly with soap and water after handling.

FIRST AID: IF INHALED: remove victim to fresh air. If not breathing, give artificial respiration, preferably mouth-to-mouth. Call a physician.

IF ON SKIN: immediately flush with plenty of water for at least 15 minutes while removing contaminated clothing. Call a physician. Wash clothing before reuse.

IF SWALLOWED: induce vomiting immediately by giving two glasses of water and sticking finger down throat. Call a physician. **NEVER GIVE ANYTHING BY MOUTH TO AN UNCONSCIOUS PERSON.**

In case of an emergency involving this product, Call Collect, day or night.
(214) 634-4000

Environmental Hazards

Avoid direct application to any body of water. Do not contaminate water by cleaning of equipment or disposal of wastes.

Do not apply when weather conditions favor drift from areas treated.

Storage and Disposal

Do not contaminate water, food or feed by storage or disposal.

STORAGE:

STORE ABOVE 25°F TO PROTECT FROM FREEZING.

Below 25°F the product may freeze. If frozen, bring to room temperature and shake vigorously. Keep container closed to prevent leaks and contamination.

DISPOSAL:

Wastes of this pesticide may be fatal if inhaled and may be dangerous. Improper disposal of excess pesticide, spray mixture, or residue is a violation of Federal law. If these wastes cannot be disposed of by use according to label instructions, contact your State Pesticide or Environmental Control Agency, or the Hazardous Waste representative at the nearest EPA Regional Office for guidance.

Empty container retains water and product residue. Observe all labeled safeguards until container is destroyed.

Do not reuse container. Triple rinse container. Then puncture and dispose of in a sanitary landfill, or by incineration, or, if allowed by state and local authorities, by burning. If burned, stay out of smoke.

BEST AVAILABLE COPY

LIMIT OF WARRANTY AND LIABILITY

This Company warrants that this product conforms to the chemical description on the label and is reasonably fit for the purposes set forth in the Complete Directions for Use label booklet ("Directions") when used in accordance with those Directions under the conditions described therein. **NO OTHER EXPRESS OR IMPLIED WARRANTY OF FITNESS FOR PARTICULAR PURPOSE OR MERCHANTABILITY OR ANY OTHER EXPRESS OR IMPLIED WARRANTY IS MADE.** This warranty is also subject to the conditions and limitations stated herein.

Buyer and all users shall promptly notify this Company of any claims whether based in contract, negligence, strict liability, other tort or otherwise.

Buyer and all users are responsible for all loss, damage or ineffectiveness from use or handling which results from conditions beyond the control of this Company, including, but not limited to, incompatibility with products other than those set forth in the Directions, unusual weather, weather conditions which are outside the range considered normal at the application site and for the time period when the product is applied, as well as weather conditions which are outside the application ranges set forth in the Directions, application in any manner not explicitly set forth in the Directions, moisture conditions outside the moisture range specified in the Directions, or the presence of products other than those set forth in the Directions in or on the soil or turf.

THE EXCLUSIVE REMEDY OF THE USER OR BUYER AND THE LIMIT OF THE LIABILITY OF THIS COMPANY OR ANY OTHER SELLER FOR ANY AND ALL LOSSES, INJURIES

OR DAMAGES RESULTING FROM THE USE OR HANDLING OF THIS PRODUCT (INCLUDING CLAIMS BASED IN CONTRACT, NEGLIGENCE, STRICT LIABILITY, OTHER TORT OR OTHERWISE) SHALL BE THE PURCHASE PRICE PAID BY THE USER OR BUYER FOR THE QUANTITY OF THIS PRODUCT INVOLVED, OR, AT THE ELECTION OF THIS COMPANY OR ANY OTHER SELLER, THE REPLACEMENT OF SUCH QUANTITY OR, IF NOT ACQUIRED BY PURCHASE, REPLACEMENT OF SUCH QUANTITY IN NO EVENT SHALL THIS COMPANY OR ANY OTHER SELLER BE LIABLE FOR ANY INCIDENTAL, CONSEQUENTIAL, OR SPECIAL DAMAGES.

The Buyer and all users are deemed to have accepted the terms of this **LIMIT OF WARRANTY AND LIABILITY** which may not be varied by any verbal or written agreement.

In case of an emergency involving this product, Call Collect, day or night,
(314) 694-4000

Product protected by U.S. Pat. No. 4,243,605
©MONSANTO COMPANY 1987

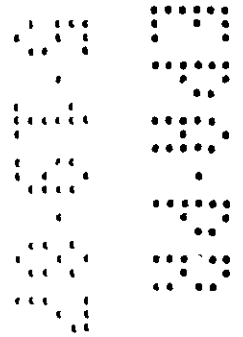
*Registered trademark of Monsanto Company

EPA Reg. No. 524



Sold by MONSANTO COMPANY
AGRICULTURAL PRODUCTS
ST. LOUIS, MISSOURI 63167 U.S.A.

BEST AVAILABLE COPY



MON 7325

Monsanto

Flowable plant growth regulator for warm season turfgrasses.

SHAKE WELL BEFORE USING

Complete Directions for Use

MON 7325 is a trademark of the Monsanto Company.

EPA Reg. No. 524

MAP 2535

ACCEPTED

NOV - 4 1987

Under the Federal Insecticide, Fungicide, and Rodenticide Act, as amended, for the pesticide registered under EPA Reg. No. 524-524

Patent protected by U.S. Pat. No. 4,243,405

Monsanto Company

Monsanto Company
P.O. Box 118
St. Louis, MO 63168



Read the entire label before using this product.

Use only according to label instructions.

Read "LIMIT OF WARRANTY AND LIABILITY" before buying or using. If terms are not acceptable, return at once unopened.

REFORMULATION OR REPACKAGING IS PROHIBITED.

LIMIT OF WARRANTY AND LIABILITY

This Company warrants that this product conforms to the chemical description on the label and is reasonably fit for the purposes set forth in the Complete Directions for Use label booklet ("Directions") when used in accordance with those Directions under the conditions described therein. NO OTHER EXPRESS OR IMPLIED WARRANTY OF FITNESS FOR PARTICULAR PURPOSE OR MERCHANTABILITY OR ANY OTHER EXPRESS OR IMPLIED WARRANTY IS MADE. This warranty is also subject to the conditions and limitations stated herein.

Buyers and all users shall promptly notify this Company of any claims whether based in contract, negligence, strict liability, other tort or otherwise.

Buyer and all users are responsible for all loss or damage from use or handling which results from conditions beyond the control of this Company including, but not limited to, incompatibility with products other than those set forth in the Directions, unusual weather conditions which are outside the range considered normal at the application site and for the time period when the product is applied as well as weather conditions which are outside the application ranges set forth in the Directions, application in any manner not explicitly set forth in the Directions, moisture conditions outside the moisture range specified in the Directions or the presence of products other than those set forth in the Directions in or on the soil or turf.

THE EXCLUSIVE REMEDY OF THE USER OR BUYER, AND THE LIMIT OF THE LIABILITY OF THIS COMPANY OR ANY OTHER SELLER FOR ANY AND ALL LOSSES, INJURIES OR DAMAGES RESULTING FROM THE USE OR HANDLING OF THIS PRODUCT (INCLUDING CLAIMS BASED IN CONTRACT, NEGLIGENCE, STRICT LIABILITY, OTHER TORT OR OTHERWISE) SHALL BE THE PURCHASE PRICE PAID BY THE USER OR BUYER FOR THE QUANTITY OF THIS PRODUCT INVOLVED OR, AT THE ELECTION OF THIS COMPANY OR ANY OTHER SELLER, THE REPLACEMENT OF SUCH QUANTITY OR, IF NOT ACQUIRED BY PURCHASE, REPLACEMENT OF SUCH QUANTITY. IN NO EVENT SHALL THIS COMPANY OR ANY OTHER SELLER BE LIABLE FOR ANY INCIDENTAL, CONSEQUENTIAL OR SPECIAL DAMAGES.

The Buyer and all users are deemed to have accepted the terms of this LIMIT OF WARRANTY AND LIABILITY which may not be varied by any verbal or written agreement.

BEST AVAILABLE COPY

PRECAUTIONARY STATEMENTS

Hazards to Humans and Domestic Animals

Keep out of reach of children.

WARNING!

MAY BE FATAL IF INHALED.

HARMFUL IF SWALLOWED OR ABSORBED THROUGH SKIN

Do not breathe vapors.

Avoid contact with skin, eyes or clothing.

Wear rubber gloves when transferring and applying, and when repairing or cleaning of equipment.

Wash thoroughly with soap and water after handling.

FIRST AID IF INHALED, remove victim to fresh air if not breathing, give artificial respiration, preferably mouth-to-mouth. Call a physician.

IF ON SKIN, immediately flush with plenty of water for at least 15 minutes while removing contaminated clothing. Call a physician. Wash clothing before reuse.

IF SWALLOWED, induce vomiting immediately by giving two glasses of water and sticking finger down throat. Call a physician. NEVER GIVE ANYTHING BY MOUTH TO AN UNCONSCIOUS PERSON.

In case of an emergency involving this product, Call Collect, day or night, (314) 694-4000.

Environmental Hazards

Avoid direct application to any body of water. Do not contaminate water by cleaning of equipment or disposal of wastes.

Do not apply when weather conditions favor drift from areas treated.

Storage and Disposal

Do not contaminate water, food, or feed by storage or disposal.

STORAGE STORE ABOVE 25°F TO PROTECT FROM FREEZING

If frozen, bring to room temperature and shake vigorously. Keep container closed to prevent spills and contamination.

DISPOSAL Wastes of this pesticide may be fatal if inhaled and may be dangerous. Improper disposal of excess pesticide, spray mixture, or rinsate is a violation of Federal law. If these wastes cannot be disposed of by use according to label instructions, contact your State Pesticide or Environmental Control Agency, or the Hazardous Waste representative at the nearest EPA Regional Office for guidance.

Emptied container retains vapor and product residue. Observe all labeled safeguards until container is destroyed.

Do not reuse container. Triple rinse container, then puncture and dispose of in a sanitary landfill, or by incineration, or if allowed by state and local authorities, by burning. If burned, stay out of smoke.

ACTIVE INGREDIENTS*

Paclolubrazol [(±)-R ⁺ R ⁻ ; 8- [[4-chlorophenyl]methyl]- (1,1-dimethylethyl)- H-1,2,4-triazole-1-ethanol]	22.9%
INERT INGREDIENTS	77.1%
	100.0%

*Contains 240 grams/litre or 2 pounds/gallon of the active ingredient paclolubrazol

Product protected by U.S. Pat. No. 4,243,405

GENERAL INFORMATION

This product regulates the growth of the listed turf grasses. This product is for use on frequently mowed turf. Treatments made in accordance with this label will reduce grass growth for up to 10 weeks. This product suppresses but does not control weeds and should be used in conjunction with appropriate herbicides where necessary. For best results, good turf management practices for diseases and insects are required to maintain turfgrass quality.

Do not apply this product through any type of irrigation system.

Moderate soil moisture conditions should be present before and after application to achieve best regulating effect; see precaution concerning saturated soil conditions under "LIMITATIONS". After treatment, continue mowing as needed to provide a neat, trimmed appearance.

FOLLOWING TREATMENT, KEEP DOMESTIC ANIMALS AND PEOPLE OFF TREATED AREAS UNTIL FOLIAGE HAS DRIED.

TURFGRASSES REGULATED

When applied as directed under the conditions described, this product will regulate the growth of the following turfgrass species:

- Hybrid Bermudagrass
Cynodon dactylon
- St. Augustinegrass
Stenotaphrum secundatum

DIRECTIONS FOR USE

It is a violation of Federal law to use this product in any manner inconsistent with its labeling.

This product will reduce vertical growth and mowing requirements for 7 to 10 weeks on hybrid bermudagrass and St. Augustinegrass turf areas.

Use on well-maintained, established and actively growing hybrid bermudagrass lawns and St. Augustinegrass turf areas that are on regular fertilization programs.

For best results, apply this product to green and actively growing turfgrass after the grass has resumed spring growth and has developed the desired appearance. Application may be made before or after mowing. Delay mowing following an application of this product until irrigation or rainfall of 0.25 inch or more has washed this product to the soil surface. Treatments may be made prior to full greenup and are effective, but may delay greenup and reduce quality. Before treating turfgrass that has been or is under drought conditions, allow turf to resume active growth prior to treatment.

If an extended growth suppression period is desired, a repeat application at recommended rates may be made to actively growing turfgrasses 10 to 12 weeks after the first application.

Sequential application made too soon after the first application or preceding periods of reduced growth due to heat or drought, may lead to turf thinning due to excessive growth suppression. To maintain turf quality combine application of this product with good turf management practices.

Grass growth will be reduced but not eliminated following treatment with this product. When a trim-mowing is required, avoid scalping. Mower blades should be adjusted and maintained in a sharpened condition to avoid damage to leaf tips which may cause discoloration.

This product may be applied twice annually, in the late spring after the turf has completely greened-up and filled in, following any winter damage, and again in the summer.

This product should be applied at the following broadcast application rates:

SOIL TYPE	FLUID OUNCES / ACRE
Sandy	36
Loam	36 to 48
Clay	46 to 54

A single repeat application can be made within same growing season, but no sooner than 10 weeks following the initial application.

NOTE: Use properly calibrated sprayers. Improper rates may cause undesirable turf growth control and areas may discolor temporarily.

To be effective, this product must reach the soil and be taken up by the roots of the plant. For best results, moderate rainfall or irrigation (0.25 inch or more) should occur within 5 days following application and before the first trim-mowing to assure the product is washed off the leaves.

MIXING INSTRUCTIONS

1. Shake well before using.
2. Fill the tank with three-fourths of the desired volume of water or fluid fertilizer if desired. Start agitation.
3. Add this product to the spray tank.
4. Add the remainder of the water or fluid fertilizer if needed.
5. Agitation is required at all times to maintain uniform spray solution until the contents of the tank are sprayed.
6. If the spray solution has been left in the tank for any length of time, mix thoroughly again before use, and before spraying.
7. Apply the spray solution on the same day of mixing.

APPLICATION EQUIPMENT AND CALIBRATION

Application equipment must be calibrated and application must be uniform and within the recommended rate range. Avoid excessive overlap but provide sufficient coverage to avoid streaking or skips. Avoid applications during windy conditions or under other conditions where drift is likely to occur. Drift can suppress growth of plants on which treatment is not intended, and can cause application to be streaked and uneven, reducing the desired effectiveness of this product.

LIMITATIONS

This product should not be applied to newly planted turfgrass until the turfgrass has been established for at least 6 months. This will allow the turf sufficient time to develop lateral roots and begin to tiller. Wait at least 2 weeks following an application of this product before overseeding or planting new turf in a treated area.

On newly sodded or sprigged turf, delay treatment until the grass has rooted firmly. Delay sprigging for at least 4 weeks after an application has been made.

Reduction in growth and development of treated turfgrass may occasionally result in a less dense appearance and a slight change in turfgrass color. These responses are usually temporary and a darker-than-normal green color will usually develop.

Avoid treating turf under stress—including turf in high traffic areas, stressed by disease or insects, or under weather conditions adverse to growing of turfgrasses. Delay treatment until conditions are favorable and the turf is actively growing.

Where large areas of the desirable turf have been thinned from winter damage, disease, or insects, withhold application until desired fill-in and rooting of the turf stand is achieved.

Heavy rainfall or irrigation after application in areas where the soil is already saturated may cause this product to move laterally on slopes and collect in low areas. These areas may undergo greater growth suppression for a longer period of time. To avoid this, do not apply when the soil is already saturated.

This product is not for use on tees, putting greens or turf areas maintained like putting greens.

This product is not recommended for use on common bermudagrass.

Do not apply this product through irrigation systems or with aerial application equipment.

Use of this product near shrubs, fruit trees, or flowers may result in growth suppression of these species.

During high temperature and/or low soil moisture conditions, liquid fertilizer solutions may cause leaf burn.

Do not allow domestic animals to feed or forage on treated areas. Do not use grass clippings for animal feed or mulching of fruit and vegetables. Grass clippings may be used for mulching around trees or ornamental shrubs not used for food production. Mulch should not be used in flower beds or other areas where plants are grown from seeds.

EPA Reg. No. 526

For use in an emergency involving this product, call day or night, 1-800-843-8743.

MUNSTADT COMPANY

MUNSTADT COMPANY
A FERTILIZER PRODUCT
MUNSTADT COMPANY

BEST AVAILABLE COPY

ACCEPTED
NOV - 4 1987
Under the Federal Insecticide,
Fungicide, and Rodenticide Act,
as amended, for the pesticide
registered under
EPA Reg. No. 522V-30-1

MAP-2840.05
EPA Est.

MON 7325

BY Monsanto

Flowable plant growth regulator for warm season turfgrasses

Carefully follow detailed instructions in attached booklet

SHAKE WELL BEFORE USING

Read the entire label before using this product.
Use only according to label instructions.
REFORMULATION OR REPACKAGING IS PROHIBITED.
Read "LIMIT OF WARRANTY AND LIABILITY" before buying or using. If terms are not acceptable, return at once unopened.

ACTIVE INGREDIENT	
Pactobutrazol (1 ± (R* R* 2 (4-chlorophenyl) methyl) α (1,1-dimethylethyl) 1 H-1,2,4-triazole 1-ethanol)	22.9%
INERT INGREDIENTS	77.1%
	<hr/> 100.0%

Contains 240 grams (litre) or 2 pounds (gallon) of the active ingredient pactobutrazol.

Keep out of reach of children.

WARNING! Read precautions on side panel.

FOUR ^{ONE} GAL UNITS

PRECAUTIONARY STATEMENTS

Hazards to humans and Domestic Animals

Keep out of reach of children

WARNING!

**MAY BE FATAL IF INHALED
HARMFUL IF SWALLOWED OR ABSORBED THROUGH SKIN**

Do not breathe vapors

Avoid contact with skin, eyes or clothing

Wear rubber gloves when transferring and applying and when repairing or cleaning of equipment

Wash thoroughly with soap and water after handling

IF INHALED: Remove victim to fresh air. If not breathing, give artificial respiration. Breathe mouth-to-mouth. Call a physician

IF ON SKIN: Immediately flush with plenty of water for at least 15 minutes while removing contaminated clothing. Call a physician. Wash clothing before reuse.

IF SWALLOWED: Induce vomiting immediately by giving two glasses of water and sticking finger down throat. Call a physician. **NEVER GIVE ANYTHING BY MOUTH TO AN UNCONSCIOUS PERSON**

In case of an emergency involving this product, Call Contact, day or night,
1-800-534-6200

Environmental Hazards

Avoid direct application to any body of water. Do not contaminate water by cleaning of equipment or disposal of wastes.

Do not apply when weather conditions favor drift from areas treated.

Storage and Disposal

Do not contaminate water, food or feed by storage or disposal.

STORAGE

STORE ABOVE 32°F TO PROTECT FROM FREEZING

Seal 255. The product may freeze if frozen, bring to room temperature and shake vigorously. Keep container closed to prevent spills and contamination.

DISPOSAL

Wastes of this pesticide may be toxic if leaked and may be dangerous. Improper disposal of excess pesticide, spray mixture, or mixtures is a violation of Federal law. These wastes cannot be disposed of by use according to above instructions. Contact your State Pesticide or Environmental Control Agency, or the hazardous waste representative at the nearest EPA Regional Office for guidance.

Empty container retains vapor and product residue. Observe all labeled safeguards until container is destroyed.

Do not reuse container. To be reuse container, then puncture and dispose of in a sanitary landfill, or by incineration, or if allowed by state and local authorities, by burning. If burned, stay out of smoke.

BEST AVAILABLE COPY

50011
4 x 1 gal PSC 801
@ 50' side panels

LIMIT OF WARRANTY AND LIABILITY

This Company warrants that this product conforms to the information furnished on the label and is responsible for the purposes set forth in the Company Directions (in the label booklet, Directions) when used in accordance with those Directions under the conditions described therein. NO OTHER EXPRESS OR IMPLIED WARRANTY OF FITNESS FOR PARTICULAR PURPOSE OR MERCHANTABILITY OR ANY OTHER EXPRESS OR IMPLIED WARRANTY IS MADE. This warranty is also subject to the conditions and limitations stated herein.

User and all users shall promptly notify this Company of any claims whether based in contract, negligence, strict liability, other tort or otherwise.

User and all users are responsible for all loss, damage or ineffectiveness from use or handling which results from conditions beyond the control of this Company, including but not limited to, incompatibility with products other than those set forth in the Directions, unusual weather, weather conditions which are outside the range considered normal at the application site and for the time period when the product is applied, as well as weather conditions which are outside the application ranges set forth in the Directions, application in any manner not explicitly set forth in the Directions, moisture conditions outside the moisture range specified in the Directions, or the presence of products other than those set forth in the Directions in or on the soil.

THE EXCLUSIVE REMEDY OF THE USER OR BUYER AND THE LIMIT OF THE LIABILITY OF THIS COMPANY OR ANY OTHER SELLER FOR ANY AND ALL LOSSES, INJURIES OR DAMAGES RESULTING FROM THE USE OR HANDLING OF THIS PRODUCT INCLUDING CLAIMS BASED IN CONTRACT, NEGLIGENCE, STRICT LIABILITY, OTHER TORT OR OTHERWISE SHALL BE THE PURCHASE PRICE PAID BY THE USER OR BUYER FOR THE QUANTITY OF THIS PRODUCT INVOLVED OR AT THE ELECTION OF THIS COMPANY OR ANY OTHER SELLER, THE REPLACEMENT OF SUCH QUANTITY IF IT NOT ACQUIRED BY PURCHASE. REPLACEMENT OF SUCH QUANTITY IN NO EVENT SHALL THIS COMPANY OR ANY OTHER SELLER BE LIABLE FOR ANY INCIDENTAL, CONSEQUENTIAL OR SPECIAL DAMAGES.

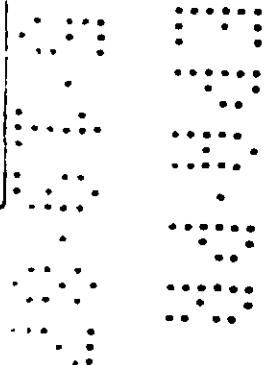
The User and all users are deemed to have accepted the terms of this LIMIT OF WARRANTY AND LIABILITY which may not be varied by any verbal or written agreement.

In case of an emergency involving this product, Call Collect, day or night
1-813-694-4000

Product protected by U.S. Pat. No. 4,243,405
© MONTANTO COMPANY 1987
® Registered trademark of Monsanto Company
EPA Reg. No. 524



MADE BY MONTANTO COMPANY
AGRICULTURAL PRODUCTS
11111 MONTICELLO AVENUE
ST. LOUIS, MO 63103



REST AVAILABLE 0000

SPOUT SIDE

ACCEPTED
NOV - 4 1987
Under the Federal Insecticide,
Fungicide, and Rodenticide Act,
as amended, for the pesticide
registered under
EPA Reg. No. 249-024-01

DO NOT
HANDLE

THE FOLLOWING STATEMENTS
Hazardous to Humans and Domestic Animals

Keep out of reach of children

WARNING!

MAY BE FATAL IF INHALED.
HARMFUL IF SWALLOWED OR ABSORBED THROUGH SKIN.
Do not breathe vapor.

Avoid contact with skin, eyes, or clothing.
Wear rubber gloves when handling, cleaning and when repairing or cleaning
of equipment.

Wash thoroughly with soap and water after handling.

PRECAUTION: Avoid contact with children and pets during application. Avoid
respiration of spray or dust. Wash hands after use.

First Aid: In case of eye contact, flush with water for at least 15 minutes while
removing contaminated clothing. Call a physician. Wash clothing before reuse.
If SWALLOWED, induce vomiting immediately by giving two glasses of water
and sticking a finger down throat. Call a physician. NEVER GIVE ANYTHING BY
MOUTH TO AN UNCONSCIOUS PERSON.

In case of an emergency involving this product, call Chemtrec, day or night,
24 hours a day, at 1-800-424-9293.

Environmental Hazards

Do not contaminate water, food, or feed by storage or disposal.
Do not contaminate water by use of equipment. Do not dispose of wastes.

Do not apply when weather conditions favor drift from areas treated.

Storage and Disposal

Do not contaminate water, food, or feed by storage or disposal.

STORAGE

STORE ABOVE GROUND TO PROTECT FROM FREEZING.

Below 25°F, the product may freeze. If frozen, bring to room temperature and shake
vigorously. Keep container closed to prevent spills and contamination.

DISPOSAL

Wastes of this pesticide may be fatal if inhaled and may be dangerous. Proper
disposal of excess pesticide, spray mixture, or residue is a violation of Federal law.
If these wastes can not be disposed of by use according to label instructions, con-
tact your State Pesticide or Environmental Control Agency or the Hazardous Waste
representative of the nearest EPA Regional Office for guidance.

Empty container returns vapor and product residue. Observe all labeled safeguards
until container is destroyed.

Do not reuse container. Triple rinse container, then puncture and dispose of in a
sanitary landfill or by incineration, as allowed by state and local authorities, by
burning it buried, stay out of smoke.

MON 7325

BY
Monsanto

Flowable plant growth regulator
for warm season turfgrasses

Carefully follow detailed instructions in attached booklet

SHAKE WELL BEFORE USING

Read the entire label before using this product.

Use only according to label instructions.

NO INFORMATION ON REPACKAGING IS PROHIBITED.

Read **LIMIT OF WARRANTY AND LIABILITY** before buy-
ing or using. If terms are not acceptable, return at once
unopened.

ACTIVE INGREDIENT:

Paclobutrazol [(±) (R⁺)-2-(4-chlorophenyl)

methyl] + (1,1-dimethyl-2-propenyl) 1

27.9%

INERT INGREDIENTS 77.1%

100.0%

*Contains 240 grams/litre or 2 pounds/gallon of the ac-
tive ingredient paclobutrazol.

Keep out of reach of children.

WARNING!

NET 32 fl. oz.
((1 qt))

Read precautions on side panel.

LIMIT OF WARRANTY AND LIABILITY

This Company warrants that this product, used as directed on the label and in accordance with the instructions on the label, will perform as described under the conditions described thereon. NO WARRANTY OF FITNESS FOR PARTICULAR PURPOSES OR OTHER EXPRESS OR IMPLIED WARRANTY IS MADE TO THE CONDITIONS AND LIMITATIONS STATED HEREON. Buyer and all users shall promptly notify this Company in writing of any claim, loss or damage, including but not limited to, loss of crops, or handling which results from conditions beyond the Company's control, including but not limited to, weather conditions, weather conditions considered normal at the application site and the application of this product, or the presence of products other than those as stated on the label.

THE EXCLUSIVE REMEDY OF THE USER OR BUYER OF THIS COMPANY OR ANY OTHER SELLER FOR OR DAMAGES RESULTING FROM THE USE (INCLUDING CLAIMS BASED IN CONTRACT, NEGLIGENCE OR OTHERWISE) SHALL BE THE PURCHASE PRICE FOR THE QUANTITY OF THIS PRODUCT OF THIS COMPANY OR ANY OTHER SELLER, THE OR IF NOT ACQUIRED BY PURCHASE, THE PURCHASE PRICE FOR THE QUANTITY OF THIS PRODUCT OF THIS COMPANY OR ANY OTHER SELLER. INCIDENTAL, CONSEQUENTIAL OR SPECIAL DAMAGES SHALL NOT BE AWARDABLE.

The Buyer and all users are deemed to have agreed to the above terms and conditions of this warranty and liability which may not be enforceable in some jurisdictions.

In case of an emergency involving this product, call Chemtrec, day or night, at 1-800-424-9293.

Product protected by U.S. Pat. No. 4,243,405
© MONSANTO COMPANY 1987

*Registered trademark of Monsanto Company.



Sole U.S. Agent: MONSANTO AGRICULTURAL PRODUCTS COMPANY, ST. LOUIS, MISSOURI

EPA Reg. 2761-00-3

BEST AVAILABLE COPY

MON 7325

Monsanto

Keep out of reach of children

WARNING! See precautions on label.

ACTIVE INGREDIENT

Permethrin 25.0%

Pyrethrin 2.0%

Pyrethrin 2.0%

Pyrethrin 2.0%

Pyrethrin 2.0%

Pyrethrin 2.0%

Pyrethrin 2.0%

Pyrethrin 2.0%

Pyrethrin 2.0%

Pyrethrin 2.0%

Pyrethrin 2.0%

Pyrethrin 2.0%

Pyrethrin 2.0%

Pyrethrin 2.0%

Pyrethrin 2.0%

Pyrethrin 2.0%

Pyrethrin 2.0%

Pyrethrin 2.0%

Pyrethrin 2.0%

Pyrethrin 2.0%

Pyrethrin 2.0%

Pyrethrin 2.0%

Pyrethrin 2.0%

Pyrethrin 2.0%

Pyrethrin 2.0%

Pyrethrin 2.0%

Pyrethrin 2.0%

Pyrethrin 2.0%

Pyrethrin 2.0%

Pyrethrin 2.0%

Pyrethrin 2.0%

Pyrethrin 2.0%

Pyrethrin 2.0%

Pyrethrin 2.0%

Pyrethrin 2.0%

Pyrethrin 2.0%

Pyrethrin 2.0%

Pyrethrin 2.0%

Pyrethrin 2.0%

Pyrethrin 2.0%

Pyrethrin 2.0%

Pyrethrin 2.0%

Pyrethrin 2.0%

Pyrethrin 2.0%

Pyrethrin 2.0%

Pyrethrin 2.0%

Pyrethrin 2.0%

Pyrethrin 2.0%

Pyrethrin 2.0%

Pyrethrin 2.0%

Pyrethrin 2.0%

Pyrethrin 2.0%

Pyrethrin 2.0%

Pyrethrin 2.0%

Pyrethrin 2.0%

Pyrethrin 2.0%

Pyrethrin 2.0%

Pyrethrin 2.0%

Pyrethrin 2.0%

Pyrethrin 2.0%

Pyrethrin 2.0%

Pyrethrin 2.0%

Pyrethrin 2.0%

Pyrethrin 2.0%

Pyrethrin 2.0%

Pyrethrin 2.0%

Pyrethrin 2.0%

Pyrethrin 2.0%

Pyrethrin 2.0%

Pyrethrin 2.0%

Pyrethrin 2.0%

Pyrethrin 2.0%

Pyrethrin 2.0%

Pyrethrin 2.0%

Pyrethrin 2.0%

Pyrethrin 2.0%

EPA Est. 32761 MO-3

SEE LABEL BOOKLET FOR COMPLETE PRECAUTIONS AND DIRECTIONS FOR USE

PRECAUTIONARY STATEMENTS

Hazards to Humans and Domestic Animals

Keep out of reach of children
WARNING! MAY BE FATAL IF INHALED. HARMFUL IF SWALLOWED OR ABSORBED THROUGH SKIN.
Do not breathe vapors. Avoid contact with the eyes or clothing. Wash thoroughly with soap and water after handling. If you breathe vapors, remove victim to fresh air. If not breathing, give artificial respiration. Preferably mouth to mouth. Call a physician.
IF ON SKIN: Immediately flush with plenty of water for at least 15 minutes while removing contaminated clothing. Call a physician. Wash clothing before reuse.
IF SWALLOWED: Induce vomiting immediately by drinking two glasses of water and sticking finger down throat. Call a physician. NEVER GIVE ANYTHING BY MOUTH TO AN UNCONSCIOUS PERSON.

In case of an emergency involving this product, call collect toll-free 1-800-4-A-MON.

Do not contaminate water, food, or feed by storage or disposal.

STORAGE: STORE ABOVE 25°F TO PROTECT FROM FREEZING. If frozen, bring to room temperature and shake vigorously. Keep container closed to prevent spills and contamination.

DISPOSAL: Wastes of this pesticide may be fatal if inhaled and may be dangerous or irritate as a violation of Federal law. If these wastes cannot be disposed of by use according to label instructions, contact your State Pesticide or Environmental Control Agency or the Hazardous Waste Representative of the nearest EPA Regional Office for guidance.

Employed container retains vapor and product residue. Do not reuse container. Triple rinse container, then puncture and dispose of in a sanitary landfill, or by incineration or, if allowed by state and local authorities, by burning. If burned, stay out of smoke.

Sold by MONSANTO COMPANY • AGRICULTURAL PRODUCTS • ST. LOUIS, MISSOURI 63167 U.S.A. • MAP 2840FL

ACCEPTED
NOV - 4 1987
Under the Federal Insecticide, Fungicide, and Rodenticide Act, as amended, for the pesticide registered under EPA Reg. No. 32761 MO-3

OUTER TUBE LABEL

PRECAUTIONARY STATEMENTS

Hazards to Humans and Domestic Animals

Keep out of reach of children

WARNING!

MAY BE FATAL IF INHALED. HARMFUL IF SWALLOWED OR ABSORBED THROUGH SKIN.

Do not breathe vapors.

Avoid contact with skin, eyes or clothing.

Wear rubber gloves when transferring and applying and when cleaning or cleaning of equipment.

Wash thoroughly with soap and water after handling.

IF INHALED: If inhaled, remove victim to fresh air. If not breathing, give artificial respiration. Preferably mouth to mouth. Call a physician.

IF ON SKIN: Immediately flush with plenty of water for at least 15 minutes while removing contaminated clothing. Call a physician. Wash clothing before reuse.

IF SWALLOWED: Induce vomiting immediately by drinking two glasses of water and sticking finger down throat. Call a physician. NEVER GIVE ANYTHING BY MOUTH TO AN UNCONSCIOUS PERSON.

In case of an emergency involving this product, call collect toll-free 1-800-4-A-MON.

Do not contaminate water, food, or feed by storage or disposal.

STORAGE: STORE ABOVE 25°F TO PROTECT FROM FREEZING. If frozen, bring to room temperature and shake vigorously. Keep container closed to prevent spills and contamination.

DISPOSAL: Wastes of this pesticide may be fatal if inhaled and may be dangerous or irritate as a violation of Federal law. If these wastes cannot be disposed of by use according to label instructions, contact your State Pesticide or Environmental Control Agency or the Hazardous Waste Representative of the nearest EPA Regional Office for guidance.

Employed container retains vapor and product residue. Do not reuse container. Triple rinse container, then puncture and dispose of in a sanitary landfill, or by incineration or, if allowed by state and local authorities, by burning. If burned, stay out of smoke.

Sold by MONSANTO COMPANY • AGRICULTURAL PRODUCTS • ST. LOUIS, MISSOURI 63167 U.S.A. • MAP 2840FL

Storage and Disposal

Do not contaminate water, food, or feed by storage or disposal.

STORAGE: STORE ABOVE 25°F TO PROTECT FROM FREEZING.

Below 25°F, product may freeze. If frozen, bring to room temperature and shake vigorously. Keep container closed to prevent spills and contamination.

DISPOSAL: Wastes of this pesticide may be fatal if inhaled and may be dangerous. Immediate disposal of excess pesticide, spray mixture, or irritate is a violation of Federal law. If these wastes cannot be disposed of by use according to label instructions, contact your State Pesticide or Environmental Control Agency or the Hazardous Waste Representative of the nearest EPA Regional Office for guidance.

Employed container retains vapor and product residue. Do not reuse container. Triple rinse container, then puncture and dispose of in a sanitary landfill, or by incineration or, if allowed by state and local authorities, by burning. If burned, stay out of smoke.

Sold by MONSANTO COMPANY • AGRICULTURAL PRODUCTS • ST. LOUIS, MISSOURI 63167 U.S.A. • MAP 2840FL

MON 7325

Monsanto

Keep out of reach of children

WARNING! See precautions on label.

ACTIVE INGREDIENT

Permethrin 25.0%

Pyrethrin 2.0%

Pyrethrin 2.0%

MONSANTO COMPANY 1987

Registered trademark of Monsanto Company

EPA Reg. No. 42283-025

SAMPLE NET 2 fl. oz.

AG Reg. No. 324 EPA 424



MAP 2840FL

ACCEPTED
NOV - 4 1987
Under the Federal Insecticide,
Fungicide, and Rodenticide Act,
as amended, for the pesticide
registered under
EPA Reg. No. 524 373

MAP-2840.03
EPA Est.

MON 7325

by Monsanto

Flowable plant growth regulator for warm season turfgrasses

Carefully follow detailed instructions in attached booklet

SHAKE WELL BEFORE USING

Read the entire label before using this product.
Use only according to label instructions.
REFORMULATION OR REPACKAGING IS PROHIBITED.
Read "NOTICE OF WARRANTY AND LIABILITY" before buy-
ing or using. If terms are not acceptable, return at once
unopened.

Keep out of reach of children.

WARNING! Read precautions
on side panel

ACTIVE INGREDIENT:
Paclobutrazol (±) (R⁺ R⁻) μ (4-chlorophenyl)
methyl = (1) (dimethylamino) |
N-1,2,4-triazole-1-ylmethanol | 22.9%
INERT INGREDIENTS 77.1%
100.0%

Contains 240 grams, 8.6 oz or 2 pounds / gallon of the ac-
tive ingredient paclobutrazol.

12 ³²/_{oz} UNITS

BEST AVAILABLE COPY

PRECAUTIONARY STATEMENTS

Hazards to Humans and Domestic Animals

Keep out of reach of children

WARNING!

MAY BE FATAL IF INHALED
HARMFUL IF SWALLOWED OR ABSORBED THROUGH SKIN

Avoid breathing vapors

Avoid contact with skin, eyes or clothing

Wear rubber gloves when transferring and applying and when loading or cleaning equipment

Wash thoroughly with soap and water after handling

MAY BE FATAL IF INHALED - Avoid contact with skin, eyes or clothing. Avoid breathing vapors. If inhaled, get fresh air immediately. If swallowed, do not induce vomiting. Call a doctor.

MAY BE FATAL IF INHALED - Avoid contact with skin, eyes or clothing. Avoid breathing vapors. If inhaled, get fresh air immediately. If swallowed, do not induce vomiting. Call a doctor.

MAY BE FATAL IF INHALED - Avoid contact with skin, eyes or clothing. Avoid breathing vapors. If inhaled, get fresh air immediately. If swallowed, do not induce vomiting. Call a doctor.

MAY BE FATAL IF INHALED - Avoid contact with skin, eyes or clothing. Avoid breathing vapors. If inhaled, get fresh air immediately. If swallowed, do not induce vomiting. Call a doctor.

Environmental Hazards

Avoid direct application to any body of water. Do not contaminate water by cleaning of equipment or disposal of wastes.

Do not apply when weather conditions favor drift from areas treated.

Storage and Disposal

Do not contaminate water, food or feed by storage or disposal.

STORAGE

STORE ABOVE 25°F TO PROTECT FROM FREEZING

Below 25°F, the product may freeze. If frozen, bring to room temperature and shake vigorously. Keep container closed to prevent leaks and contamination.

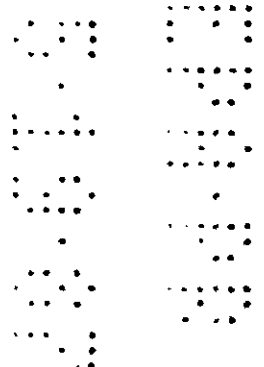
DISPOSAL

Wastes of this pesticide may be fatal if inhaled and may be dangerous. Improper disposal of excess pesticide, spray mixture, or residue is a violation of Federal law. If these wastes cannot be disposed of by the instructions, contact your State Pesticide or Environmental Control Agency, or the Hazardous Waste representative at the nearest EPA Regional Office for guidance.

Empty container retains water and product residue. Observe all labeled safeguards until container is destroyed.

Do not reuse container. Triple rinse container, then puncture and a source of a sanitary landfill or by incineration or as allowed by state and local authorities. Do burning. If burned, stay out of smoke.

EXPIRES 12/31/85



LIMIT OF WARRANTY AND LIABILITY

This Company warrants that this product conforms to the chemical description on the label and is reasonably fit for the purposes set forth in the Complete Directions for the label product. Directions when used in accordance with these Directions under the conditions described therein. NO OTHER EXPRESS OR IMPLIED WARRANTY OF FITNESS FOR PARTICULAR PURPOSE OR MERCHANTABILITY OR ANY OTHER EXPRESS OR IMPLIED WARRANTY IS MADE. This warranty is also subject to the conditions and limitations stated herein.

Buyer and all users shall promptly notify this Company of any claims whether based in CONTRACT NEGLIGENCE STRICT LIABILITY OTHER TORT OR OTHERWISE.

Buyer and all users are responsible for all loss, damage or ineffectiveness from use or handling which results from conditions beyond the control of this Company, including but not limited to, incompatibilities with products other than those set forth in the Directions, unusual weather, weather conditions which are outside the range considered normal at the application site and for the time period when the product is applied, as well as weather conditions which are outside the application ranges set forth in the Directions, application in any manner not explicitly set forth in the Directions, moisture conditions outside the moisture range specified in the Directions, or the presence of products other than those set forth in the Directions as set on the label or label.

THE USER SHALL BE RESPONSIBLE FOR THE USER OR BUYER AND THE LIMIT OF THE LIABILITY IS THE PURCHASE PRICE PAID BY THE USER OR BUYER FOR ANY AND ALL LOSSES, INJURIES

OR DAMAGES RESULTING FROM THE USE OR HANDLING OF THIS PRODUCT INCLUDING CLAIMS BASED IN CONTRACT NEGLIGENCE STRICT LIABILITY OTHER TORT OR OTHERWISE, SHALL BE THE PURCHASE PRICE PAID BY THE USER OR BUYER FOR THE QUANTITY OF THIS PRODUCT INVOLVED, OR, AT THE ELECTION OF THIS COMPANY OR ANY OTHER SELLER, THE REPLACEMENT OF SUCH QUANTITY OR, IF NOT ACQUIRED BY PURCHASE, REPLACEMENT OF SUCH QUANTITY. IN NO EVENT SHALL THIS COMPANY OR ANY OTHER SELLER BE LIABLE FOR ANY INCIDENTAL, CONSEQUENTIAL OR SPECIAL DAMAGES.

The Buyer and all users are deemed to have accepted the terms of this LIMIT OF WARRANTY AND LIABILITY which may not be varied by any verbal or written agreement.

In case of an emergency involving this product, Call Collect, 24 hr or night (314) 634-4000

Product protected by U.S. Pat. No. 4,243,405
© MONSANTO COMPANY 1987

® Registered trademark of Monsanto Company

EPA Reg. No. 524



Made by MONSANTO COMPANY
AGRICULTURAL PRODUCTS
ST. LOUIS, MISSOURI 63177 USA

BEST AVAILABLE COPY

