

DIRECTIONS FOR LIVESTOCK PEST CONTROL

For Control of Face Flies, Horn Flies, House Flies, Stable Flies, Lice and Lone Star Ticks on Dairy Cattle, Beef Cattle, Sheep, Goats and Hogs: Mix 2 quarts of Duo Kill E.C. per 12 gallons of water. Spray to thoroughly cover all parts of the animal, including the legs, using 1-2 pints of spray per large animal and proportionately less for smaller animals.

For periodic control operations involving spray application to livestock with high pressure equipment, do not exceed a 0.5% concentration. Mix 2 quarts of Duo Kill E.C. per 12 gallons of water (0.5% concentration). Spray to thoroughly cover the animal's body and legs (avoid excessive spraying of the head) using 1-2 quarts of spray per large animal and proportionately less for smaller animals. Repeat above application as necessary to maintain control, but not more often than once every 7 days.

Improved face fly control may be achieved by adding sugar to the spray solution at the rate of 1 pound per 6-10 gallons of spray. Repeat above application as necessary to maintain control, but not more often than once every 7 days.

Low Volume Application for Control of Face Flies: Mix 4 tablespoons (2 fluid oz.) of Duo Kill E.C. per 1 1/2 pints of water (1% concentration). Using a calibrated sprayer, apply 5 teaspoons of spray to the face and a total of 5-10 teaspoons to the back and sides of the animal 3 times per week. Improved control may be achieved by the addition of 1 level teaspoon of sugar per pint of spray solution.

For Control of Lice and Winter Ticks on Dairy Cattle, Beef Cattle, Sheep, Goats and Hogs: Mix 2 1/2 pints of Duo Kill E.C. per 16 gallons of water (0.25% concentration). Spray animals thoroughly using up to 1 gallon of spray. Apply a second application 14 days later. Repeat applications as necessary to maintain control, but not more often than once every 7 days.

Backrubber Applications: For use in backrubbers or face rubbers for the control of horn flies and face flies, mix 1 quart of Duo Kill E.C. per 4 gallons of back rubber base oil (1% concentration). This may be diesel fuel or fuel oil in accordance with local recommendations.

DO NOT apply regularly to calves under 6 months of age. Bahman cattle should not be treated as they may show hypersensitivity to organic phosphates.

For Control of House Flies, Face Flies and Stable Flies in and Around Livestock Buildings: Mix 2 quarts of Duo Kill E.C. per 6 gallons of water (1% concentration). Spray premise such as inside and outside barn walls including dairy barns, caves, fences and other resting or breeding places at least twice monthly using approximately 1 gallon of finished spray per 1000 square feet (40' x 25'). Improved House Fly and Face Fly control may be achieved by adding sugar to the spray solution at the rate of 1 pound per 6-10 gallons of spray. Do not use in poultry houses.

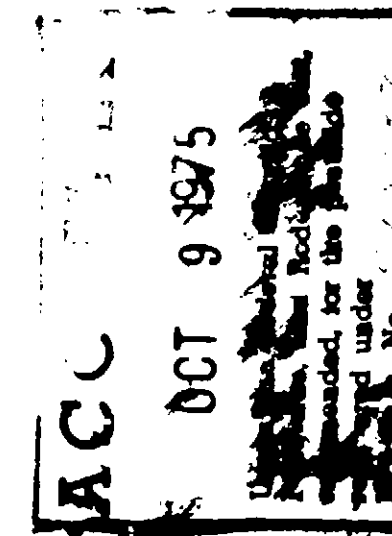
For Control of Chorioptes Mites on Dairy and Beef Cattle: Mix 2 pints of Duo Kill E.C. per 12 gallons of water (0.25% concentration). Spray completely the country. Repeat within 7-14 days for best results.



'DUO-KILL'

CONCENTRATE EMULSIFIABLE

Contains CIODRIN and VAPONA
Insecticides Dairy and Livestock Spray



ACTIVE INGREDIENTS:	BY WEIGHT
Dimethyl phosphate of alpha-methylbenzyl 3-hydroxy-cis-crotonate	10.0%
2, 2-dichlorovinyl dimethyl phosphate	2.3%
Related Compounds	0.2%
Petroleum Hydrocarbons	77.0%
INERT INGREDIENTS	10.5%
TOTAL	100.0%

*Equivalent 2.5% VAPONA[®] Insecticide
Reg.[™] Shell Chemical Company

WARNING

**KEEP OUT OF THE REACH OF
CHILDREN AND DOMESTIC ANIMALS**

See additional warnings on side panel.

DO NOT USE, POUR, SPILL OR STORE NEAR HEAT OR OPEN FLAME

NET CONTENTS GAL.



CAUTION

Hazardous if swallowed, inhaled or absorbed through skin. Wash thoroughly with soap and water after handling and before eating and smoking. Wear clean clothing. In case of spillage on person or clothing, immediately remove clothing and flush skin or eyes with plenty of water for eyes, get medical attention.

Atropine is antidotal. 2-PAM is also antidotal and may be administered in conjunction with atropine.

During commercial or prolonged exposure in spray-mixing and loading operations, wear clear rubber gloves and a mask or respirator of a type found suitable by the U.S. Bureau of Mines for protection against Duo Kill E.C. Use this material only as specified on this label.

This product is toxic to fish and wildlife. Birds feeding on treated areas may be killed. Keep out of any body of water. Do not apply when weather conditions favor drift from areas treated. Do not contaminate water by cleaning of equipment, or disposal of wastes. Apply this product only as specified on this label.

Do not treat animals within one day of slaughter.

Do not apply dermally in combination with Trichlorofon.

Decontaminate and destroy used containers. Do not re-use for any purpose. Decontaminate containers by rinsing thoroughly with water and alkaline detergent. Destroy containers by breaking and burying fragments in isolated area. Dispose of rinsings in a way as not to constitute a hazard, or contaminate water supplies.

NOTICE OF WARRANTY

Roberts Laboratories Inc. makes no warranty of merchantability, fitness for any purpose, or otherwise, express or implied, concerning this product or its use, which extend beyond the statements on this label.

Manufactured by
ROBERTS LABORATORIES, INC.
Rockford, Illinois 61101 U.S.A.

E.P.A. REG. NO 523-87-AA
E.P.A. REG. NO 523-IL-1

ITL