

518-71
PM 21

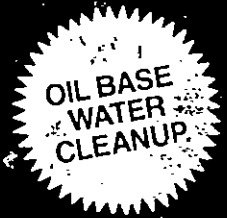
Pg. 1 of 2

N-5780 12-4-81

TOP

LIVE RLD

AUG 19 1987

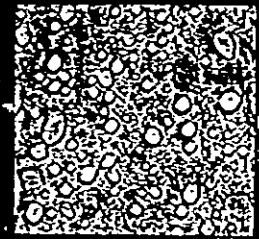


CUPRINOL®

SEMI-TRANSPARENT

STAIN & WOOD PRESERVATIVE

Keeps water out. Protects against mildew & rot.



ACTIVE INGREDIENTS

Ba (tributyltin) oxide 0.30%

Chlorothalonil 0.70%

(Tetrachloro-p-benzoquinone)

INERT INGREDIENTS 99.00%

TOTAL 100.00%

EPA Reg. No. 518-71
EPA Est. No. 518-CT-1

KEEP OUT OF REACH OF CHILDREN. DANGER:

SEE BACK PANEL FOR ADDITIONAL PRECAUTIONARY STATEMENTS.

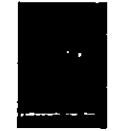
1 GALLON (3.785 LITERS)

CUPRINOL® STAIN & WOOD PRESERVATIVE

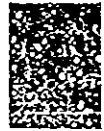
When it's wood against weather.*



Resists rot



Resists mildew discoloration*



Repels water

CUPRINOL® STAIN & WOOD PRESERVATIVE now combines the penetrating protection of an oil base stain with easy water cleanup. Resists rot, mildew, warping and swelling. Use on wood siding, fences, decks, and outdoor furniture. When properly applied will NOT crack, blister or peel.

- Durable, light fast pigments screen out the sun's rays and help the coating to resist fading.
- Long lasting water repellents help resist permanent washoff, warping and swelling.
- Effective fungistats resist fungi that produce rot and mildew discoloration.

*This product will resist mildew attack after application, however, it will not kill mildew present prior to staining. Test for mildew by applying a 50/50 solution of bleach and water. Mildew is present if application area lightens. Scrub at mildew infected surfaces with a solution of 10% household bleach, 30% warm water. Let stand 30 minutes, then rinse with clear water. Apply Cuprinol again after area dries.

LIMITED WARRANTY

Danworth Company will replace this product if it is shown to be defective within one year of the date of purchase. Claims must be sent within the warranty period, together with proof of purchase to Danworth Company, P.O. Box K, Avon, CT 06001.

This warranty does not apply if the product is not used as directed. THE DURATION OF ANY IMPLIED WARRANTY IS LIMITED TO THE DURATION OF THIS LIMITED WARRANTY. DANWORTH'S LIABILITY UNDER ANY WARRANTY, WHETHER EXPRESS OR IMPLIED, IS LIMITED SOLELY TO REPLACEMENT OF THE PRODUCT AND DOES NOT INCLUDE LABOR OR OTHER INCIDENTAL OR CONSEQUENTIAL DAMAGES. Some states do not allow limitations on how long an implied warranty lasts, so this limitation of incidental or consequential damages may not apply to you. In such cases, your specific legal rights, and your remedy, may vary from state to state.

BEST AVAILABLE PRODUCT

AUG 19 1987

3/11/87

NOTE: CHECK CAREFULLY - CHANGES ARE COSTLY. IF APPROVED, SIGN AND RETURN ONE COPY.

CUSTOMER NO.	518-71	DATE	8/11/87
QUANTITY	1 GAL	PRICE	14.95
PRODUCT	CUPRINOL STAIN	DATE	8/11/87
COATING	SEMI-TRANSPARENT	DATE	8/11/87
DATE	8/11/87	REV. DATE	8/11/87

518-71

14.95

BEST

N-5780 12-4

PRECAUTIONARY STATEMENTS. HAZARDS TO HUMAN & DOMESTIC ANIMALS.

DANGER: Corrosive. Causes eye and skin damage. Do not get in eyes, or skin or on clothing. Wear goggles or face shield and rubber gloves when handling. May be fatal if swallowed. Do not breathe vapors or spray mist. May be absorbed through skin.

FIRST AID: If swallowed, immediately drink 1 or 2 glasses of milk. If milk is not available, drink 1 or 2 glasses of water. Then induce vomiting by touching back of throat with finger. Do not induce vomiting or give anything by mouth to an unconscious person. Get medical attention. If contact with eyes, flush with water for 15 minutes. Get medical attention. If contact with skin, immediately remove any contaminated clothing. Wash skin thoroughly with soap and water. Get medical attention if irritation persists. Wash clothing before reuse.

ENVIRONMENTAL HAZARDS: This product is toxic to fish and wildlife. Do not apply directly to water. Do not contaminate those waters by cleaning of equipment or disposal of wastes. Apply this product only as specified on this label.

DIRECTIONS FOR USE

It is a violation of Federal law to use this product in a manner inconsistent with its labeling. This product must be applied out of doors to wood intended only for exterior use. **BEFORE USE, THOROUGHLY MIX CONTENTS OF CAN.** Stir occasionally during use to keep color uniform. Use on clean, unprimed wood or on previously oil base semi-transparent stained surfaces which are free of all mildew. Apply by synthetic bristle brush, spray or dip coating 15-30 secs. (Framing lumber up to 2 mins.). Back brush after spray or dip. Let new decks weather at least one month before first stain coat. The more preservative absorbed by the wood the better, but DO NOT OVERAPPLY. Over application may cause streaking and prolong drying time. When adequately absorbed by the wood, the stain dries to flat finish. The colors will vary somewhat on different woods. Recoating over other colors may affect the color. A sample brush out is recommended. Do not use on hardboard or over creosote base materials. Thoroughly cover cut ends and joints. For best results, apply in the shade with surface temperatures between 50°F and 90°F and which will not fall below 40°F during 24 hours after application. **DO NOT THIN OR MIX WITH ANY OTHER PRODUCT.** To avoid lap marks maintain a wet edge. Depending on wood type, dries to touch in 5 hours, but thorough drying requires 24 hours. If desired, a second coat may be applied at any time after the first application has dried to the touch. Second coat applications may produce a more intense color. Close container after each use. Do not apply if rain is imminent or if rain is forecasted within 12 hours after application. May be applied to damp surfaces but not wet surfaces.

Use only with adequate ventilation.

Coverage for these stains ranges from 150 sq. ft. per gallon for rough sawn materials, up to 300 sq. ft. per gallon for smooth materials.

Cleanups: Clean brushes and other tools immediately after use with soap and water.

STORAGE AND DISPOSAL

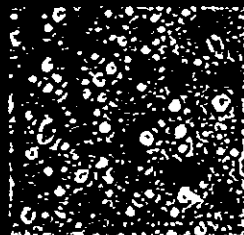
Do not contaminate water, food or feed, by storage or disposal. Do not reuse empty container. Wrap container and put in trash collection.

Darworth Company III

Axon, Connecticut 06001



STAIN PRES
Keeps water out



ACTIVE INGREDIENTS	
Bis (Imidazolin) Oxide	0.30%
Chloro (1,3,5-triazine)	
(Tetrachloro (sophthalimide))	0.70%
INERT INGREDIENTS	99.00%
TOTAL	100.00%
EPA Reg. No. 318-71	
EPA Est. No. 518-C11	

3/11/87