

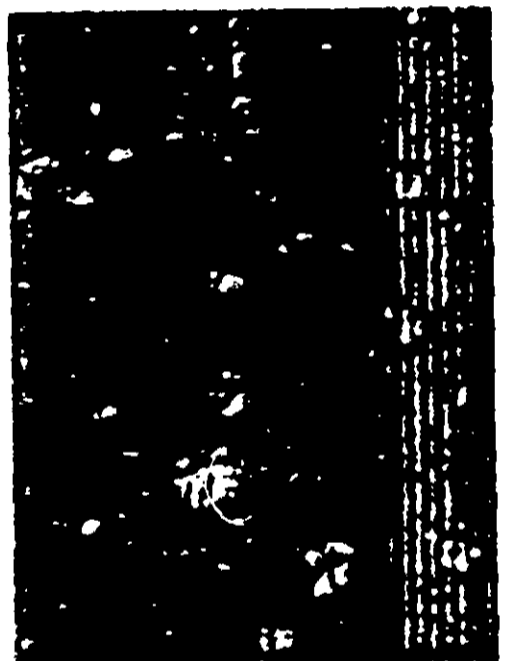


ACCEPTED
 JAN 29 1976
 Under the Federal Insecticide,
 Fungicide, and Rodenticide Act.
 EPA Reg. No. 518-65

CUPPRINOL®

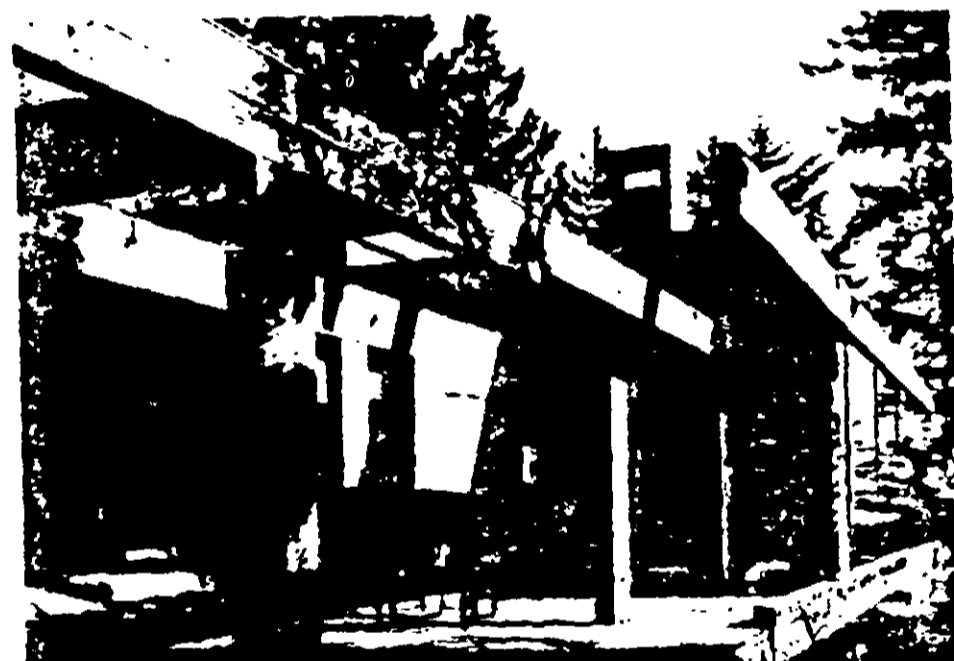
SEMI-TRANSPARENT

STAIN & WOOD PRESERVATIVE



Chocolate
Brown
70
518-65

Keeps water out
Keeps beauty in
Protects against
mildew and rot



CAUTION 1 GALLON
 KEEP OUT OF REACH OF CHILDREN 3.785 LITERS
 READ CAUTIONS AND WARNINGS ON BACK
 ACTIVE NET INGREDIENT bis(tributyltin) oxide 0.3%
 INERT INGREDIENTS 99.7%
 Total 100.0%
 EPA Est. 518-CT-1

Customer: DARWORTH DIV. E. B. AND S.		
Box # 708	CE. 20-739	B.P. Pes 4P
Size 1GAL TP	CE. 7-622	1606
Date Submitted 11-8-75	Series Order No. 234-7763	Production Order No. 5-2263

Design: **CUPPRINOL SEMI-TRANSPARENT STAIN**

Buyer's Approval Sketch B&W proof Color proof

To be filled in by Buyer. Check (X) applicable boxes:

<input type="checkbox"/> Design and arrangement approved as submitted	<input type="checkbox"/> Spelling and punctuation approved as submitted	<input type="checkbox"/> Colors approved as submitted
<input type="checkbox"/> Change as detailed	<input checked="" type="checkbox"/> Change as detailed	<input type="checkbox"/> Change as detailed

Date signed: **11/13/75** Buyer's Signature: *[Signature]*

Read before signing
 Buyer agrees that (1) Continental Can Company, Inc. shall not be liable for (a) any error in the attached unless this proof is returned to Continental with such error plainly noted in writing, (b) the failure of any part of the attached to comply with any local, state or Federal law or regulation, (c) any part of the attached which infringes the property rights of others acquired, without limitation thereof, by usage, registration, copyright, letters patent or otherwise and (d) production colors not being exactly the same as the hand proved colors, if any, in the attached, although Continental will duplicate the colors as closely as possible. (2) Buyer shall indemnify and hold Continental harmless against the liability described in (1) above, including attorney fees and court costs or for consequential damages, and (3) the liability of Continental for uncorrected errors plainly noted in the attached shall not exceed the actual cost of the goods bearing the noted error. Changes increase costs and delay production.

Continental Can Company, Inc.



CUPRINOL

STAIN & WOOD PRESERVATIVE



Wood dipped in Cuprinol resists rot.

Mildew discoloration.

Exceeds water repellency requirements of Federal Spec. TT-W-572b, 3.7

For All Exterior & Interior Stain Uses

CUPRINOL STAIN & WOOD PRESERVATIVE combines beauty and protection to keep siding, fences and all wood attractive and safe from rot, mildew discoloration, warping and swelling. CUPRINOL's carefully selected rich, lasting colors add warmth to wood's natural beauty and texture.

Triple protection — Durable, light-fast pigments screen out the sun's rays and resist fading.

Long lasting water repellents keep out the moisture which promotes pigment wash-off, warping and swelling.

Effective fungistat (TBTO — a derivative of metallic tin) resists fungi that produce rot and mildew discoloration.

*Cuprinol will resist mildew attack after application; however, it will not kill mildew present prior to staining. Test for mildew by applying a 50/50 solution of bleach and water. Mildew is present if application area lightens. Scrub all mildew infected surfaces with a solution of:

2/3 Cup Baking Soda 1/3 Cup Strong Detergent
1 Qt. Household Bleach 3 Qt. Warm Water

Let stand 30 minutes, then rinse with clear water. Apply Cuprinol only after area is completely dry.

CUPRINOL STAIN & WOOD PRESERVATIVE is easy to apply, has no unpleasant odor and may be painted over.

For wood protection without stain color use:

CUPRINOL Green = 10 for wood in contact with the ground.

CUPRINOL Clear = 20 for protecting wood above the ground and as an undercoat for paint.

"Trees, Wood and Cuprinol Stain" — An illustrated booklet on protecting and beautifying wooden building materials is available from Darworth Company for 25¢.

234 7763

CAUTION: COMBUSTIBLE MIXTURE

N.Y.F.D. Certificate of Approval No. 3759

DO NOT USE, POUR, SPILL OR STORE NEAR HEAT OR OPEN FLAME.

CUPRINOL products conform to Air Pollution Control District, City of Los Angeles, Rule 66.

Directions: BEFORE USE, THOROUGHLY MIX CONTENTS OF CAN. Stir occasionally during use to keep color uniform. Use on clean, dry, unprimed wood or on previously semi-transparent stained surfaces which are free of all mildew* (see discoloration). Apply liberally by brush, roller, spray or by dipping (siding 3 minutes, millwork 5 minutes). If stain is NOT freely absorbed by wood, allow surface to weather until adequate absorption is attained. Color will vary somewhat on different woods from the sample shown; recoating over other colors may also affect the color. A sample brush out is recommended. Do not use on abraded plywood.

The more preservative absorbed by the wood, the longer and more effective the protection. Thoroughly cover cut ends and joints. For best results, apply in the shade at 40°-90°F. Do not thin.

CUPRINOL PRESERVATIVE STAINS dry to the touch rapidly, but thorough drying requires 24 hours. If desired, a second coat may be applied at any time after the initial application.

Clean CUPRINOL from brushes, etc. with mineral spirits or turpentine.

Coverage: Approximately, 400 sq. ft. per gallon when brushed on smooth woods. Textured surfaces absorb more stain.

Caution: Harmful if swallowed. May be absorbed through skin. Causes skin irritation. Avoid breathing vapor or spray mist. Use in well ventilated area. Avoid contact with skin, eyes or clothing. In case of contact, immediately remove contaminated clothing and wash skin with soap and water, for eyes flush with plenty of water and get medical attention. Wash clothing before reuse. Do not reuse empty container. Destroy it by perforating or crushing. Bury or discard in a safe place. Avoid storage near feed or food products.

This product is toxic to fish. Keep out of lakes, streams or ponds. Do not contaminate water by cleaning of equipment or disposal of wastes. Apply this product only as specified on this label. Keep out of reach of children.

LIMITED WARRANTY

The manufacturer will replace this product if, within 1 year of the date of purchase, it is shown to be defective. THE MANUFACTURER'S LIABILITY UNDER ANY WARRANTY WHETHER EXPRESS OR IMPLIED IS LIMITED SOLELY TO REPLACEMENT OF THE PRODUCT AND DOES NOT INCLUDE LABOR OR OTHER CONSEQUENTIAL DAMAGES.

*Darworth, Inc. 1971 All Rights Reserved

Darworth 
AVON, CONNECTICUT 06001

