



CUPRINOL™

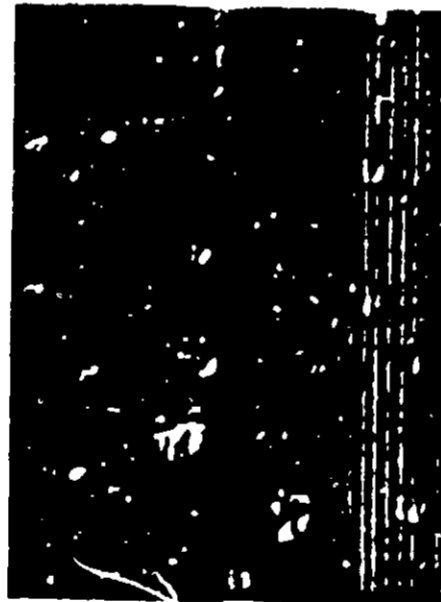
ACCEPTED

UNDER THE FEDERAL INSECTICIDE
FUNGICIDE AND ROENTICIDE ACT
FOR ECONOMIC POISON REGISTERED
UNDER NO. 227-0000

STAIN & WOOD PRESERVATIVE



This can contains
**Glen
Green
#50**
EPA Reg. No. 518-52



Keeps water out
Keeps beauty in
Protects against
mildew and rot



WARNING **1 GALLON**
KEEP OUT OF REACH
OF CHILDREN
READ CAUTIONS AND
WARNINGS ON BACK

Customer <i>DARL CORTH INC.</i>	Design <i>CUPRINOL STAIN PRESERVATIVE</i>
Eng. <i>L. SO.</i>	Date <i>11-23-74</i>
Size <i>1 1/2" x 7 1/2"</i>	C.E. <i>W. H. H. B.P.</i>

READ BEFORE SIGNING: Customer agrees that (1) Continental Can Company, Inc. shall not be liable for (a) any error in the attached unless this proof is returned to Continental with such error plainly noted in writing; (b) the failure of any part of the attached to comply with any local state or Federal law or regulation; (c) any part of the attached which infringes the property rights of others acquired without limitation thereof by usage, registration, copyright, letters patent or otherwise and (d) production colors not being exactly the same as the hand proved colors, if any, in the attached, although Continental will duplicate the colors as closely as possible; (2) Customer shall indemnify and hold Continental harmless against the liability described in (1) above, including attorney fees and court costs or for consequential damages; and (3) the liability of Continental for uncorrected errors plainly noted in the attached shall not exceed the actual cost of the containers bearing the noted error. **CHANGES INCREASE COSTS AND DELAY PRODUCTION.**

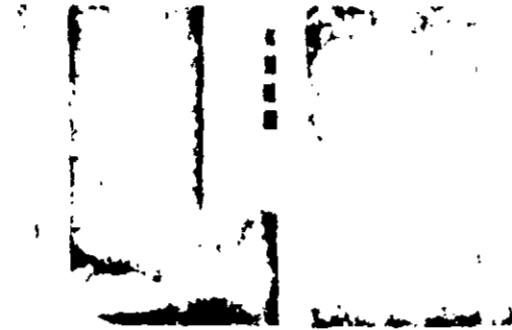
Change Approved

Date *11-23-74*
Date *11-23-74*



CUPRINOL

STAIN & WOOD PRESERVATIVE



Wood treated with Cuprinol will last longer and look better. It is the most effective wood preservative available. It is also a stain remover and wood brightener. It is suitable for use on all types of wood.

For All Exterior & Interior Stain Uses

- Decking
- Fences
- Garden furniture
- Gates
- Pergolas
- Railings
- Sheds
- Scaffolding
- Staircases
- Verandas

Triple protection

- Kills wood-boring insects
- Prevents rot and decay
- Effective stain remover

For wood protection

- Timber framing
- Window frames
- Door frames
- Sills
- Joists
- Rafters
- Trusses
- Studs
- Beams
- Posts
- Columns
- Posts
- Columns

Trees Woodland & Parks

- Tree trunks
- Posts
- Columns

ACCEPTED
 December 13 1972
 NEW YORK STATE DEPARTMENT OF ENVIRONMENTAL CONSERVATION
 119 W. STATE ST. ALBANY, N.Y. 12207

CAUTION: COMBUSTIBLE MIXTURE

N.Y.F.D. Certificate of Approval for use

Directions

For all exterior and interior stain uses, dilute with water in the ratio of 1 part Cuprinol to 4 parts water. For wood protection, dilute with water in the ratio of 1 part Cuprinol to 10 parts water.

For trees, woodlands and parks, dilute with water in the ratio of 1 part Cuprinol to 10 parts water.

For all uses, apply with a brush, sprayer or pump. Allow to dry.

For all uses, apply with a brush, sprayer or pump. Allow to dry.

For all uses, apply with a brush, sprayer or pump. Allow to dry.

For all uses, apply with a brush, sprayer or pump. Allow to dry.

For all uses, apply with a brush, sprayer or pump. Allow to dry.

For all uses, apply with a brush, sprayer or pump. Allow to dry.

For all uses, apply with a brush, sprayer or pump. Allow to dry.

For all uses, apply with a brush, sprayer or pump. Allow to dry.

For all uses, apply with a brush, sprayer or pump. Allow to dry.

For all uses, apply with a brush, sprayer or pump. Allow to dry.

For all uses, apply with a brush, sprayer or pump. Allow to dry.

For all uses, apply with a brush, sprayer or pump. Allow to dry.

For all uses, apply with a brush, sprayer or pump. Allow to dry.

For all uses, apply with a brush, sprayer or pump. Allow to dry.

For all uses, apply with a brush, sprayer or pump. Allow to dry.

For all uses, apply with a brush, sprayer or pump. Allow to dry.

For all uses, apply with a brush, sprayer or pump. Allow to dry.

*Camerman's Note
Poor Copy*

Farworth

