



CUPBINOL®

ACCEPTED

UNDER THE FEDERAL INSECTICIDE
FUNGICIDE AND ROENTICIDE ACT
FOR ECONOMIC POISON REGISTERED
UNDER NO.

STAIN & WOOD PRESERVATIVE



This can contains:
Colonial Red
#35
EPA Reg No 518-49



Keeps water out
Keeps beauty in
Protects against
mildew and rot



WARNING
KEEP OUT OF REACH
OF CHILDREN
READ CAUTIONS AND
WARNINGS ON BACK

1 GALLON

ACTIVE INGREDIENT
Bis(Tri-n-butyltin) oxide 0.3%
INERT INGREDIENTS 99.7%
Total 100.0%

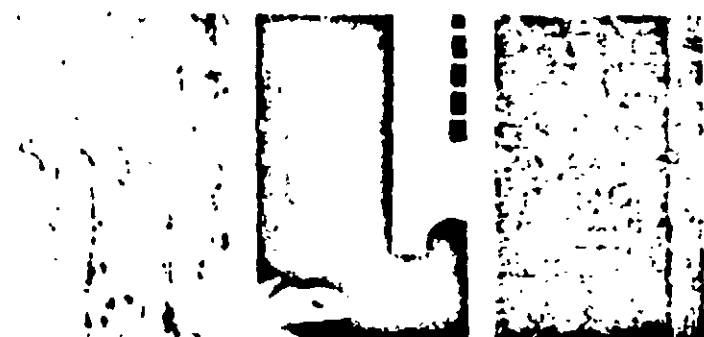
| | | |
|--|--|-------------------------------------|
| Customer | Design | Date: 1-16-71 |
| Eng | CF BP | |
| <p><small>READ BEFORE SIGNING: Customer agrees that (1) Continental Can Company, Inc. shall not be liable for (a) any error in the attached unless this proof is returned to Continental with such error plainly noted in writing, (b) the failure of any part of the attached to comply with any local, state or Federal law or regulation, (c) any part of the attached which infringes the property rights of others acquired, without limitation thereof, by usage, registration, copyright, letters patent or otherwise and (d) production colors not being exactly the same as the hand ground colors, if any, in the attached, although Continental will duplicate the colors as closely as possible; (2) Customer shall indemnify and hold Continental harmless against the liability described in (1) above, including attorney fees and court costs or for consequential damages, and (3) the liability of Continental for uncorrected errors plainly noted in the attached shall not exceed the actual cost of the containers bearing the noted error. CHANGES INCREASE COSTS AND DELAY PRODUCTION.</small></p> | | |
| Change as Detailed <input type="checkbox"/> | Approved as Submitted <input type="checkbox"/> | Customer Signature _____ Date _____ |

DATE
1-16-71



CUPRINOL

STAIN & WOOD PRESERVATIVE



Wood dipped in Cuprinol resists rot.

Protects against mildew discoloration.

Exceeds water repellency requirements of Federal Spec. TT-W-572b, 3.7

For All Exterior & Interior Stain Uses

CUPRINOL STAIN & WOOD PRESERVATIVE combines beauty and protection to keep siding, fences and all wood attractive and safe from rot, mildew discoloration, warping and swelling. CUPRINOL's carefully selected rich, lasting colors add warmth to wood's natural beauty.

Triple protection

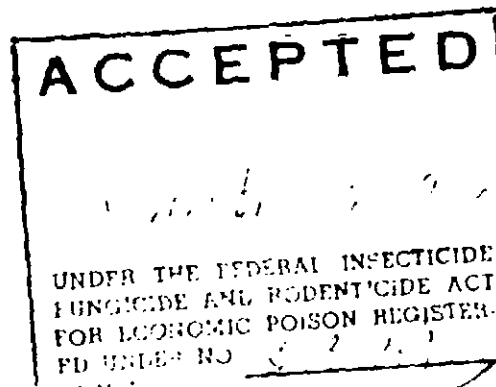
- **Durable, light-fast pigments** screen out the sun's rays and resist fading.
- **Long lasting water repellents** keep out the moisture which promotes pigment wash-off, warping and swelling.
- **Effective fungicide** (TBTO) - a derivative of metal - protects against the fungi that produce rot and mildew discoloration.

CUPRINOL STAIN & WOOD PRESERVATIVE is easy to apply, has no unpleasant odor and may be painted over.

For wood protection without stain color use

- CUPRINOL Green #10 for wood in contact with the ground.
- CUPRINOL Clear #20 for protecting wood above the ground and as an undercoat for paint.

"Trees, Wood and Cuprinol Stain" - An illustrated booklet on protecting and beautifying wooden building materials is available from Darworth Incorporated for 25¢.



Same copy for call 10 colors Cuprinol Stain & Sealant

CAUTION: COMBUSTIBLE MIXTURE

N.Y.F.D. Certificate of Approval No. 3799

DO NOT LIE, POUR, SPILL OR STORE NEAR HEAT OR OPEN FLAME

CUPRINOL product conforms to Air Pollution Control District, City of Los Angeles, etc.

Directions: BEFORE USE THOROUGHLY MIX CONTENTS OF CAN. Stir occasionally during use to keep color uniform. Use on clean, dry, unprimed wood or on previously stained surfaces. Apply liberally by brush, roller, spray or by dipping (siding 3 minutes, millwork 5 minutes). Color will vary somewhat on different woods from the sample shown, recoating over other colors may also affect the color. Sample brush out is recommended. Do not use on abraded ply wood.

The more preservative absorbed by the wood, the longer and more effective the protection. Thoroughly cover all ends and joints. For best results, apply in the shade at 40°-90°F. Do not thin. This stain may be mixed with Clear CUPRINOL or other CUPRINOL Stain colors. CUPRINOL PRESERVATIVE STAINS dry to the touch rapidly, but thorough drying requires 24 hours. If desired, a second coat may be applied at any time after the initial application.

Clean CUPRINOL from hands, brushes, etc. with mineral spirits or turpentine.

Coverage: Approximately 400 sq. ft. per gallon when brushed on smooth woods. Textured surfaces absorb more stain.

Warning: Harmful if swallowed. May be absorbed through skin. Causes skin irritation. Avoid breathing vapor or spray mist. Avoid contact with skin, eyes or clothing. In case of contact, immediately remove contaminated clothing and wash skin with soap and water. For eyes, flush with plenty of water and get medical attention. Wash clothing before reuse. Do not reuse empty container. Destroy by perforating or crushing. Bury or discard in a safe place. Avoid storage near food or kindred products. This product is toxic to fish. Do not let drain water by cleaning of equipment or disposal of wastes. Keep out of reach of children.

By the makers of: DOLYSEAMSEAL® Adhesive, CAUL, DARWORTH Latex Caulk and OLD MASTERS Antiquing and Wood Graining Finishes. Copyright © 1971 All Rights Reserved.

Darworth AVON, CONN. 06001

Cameraman's Note
Poor Copy