

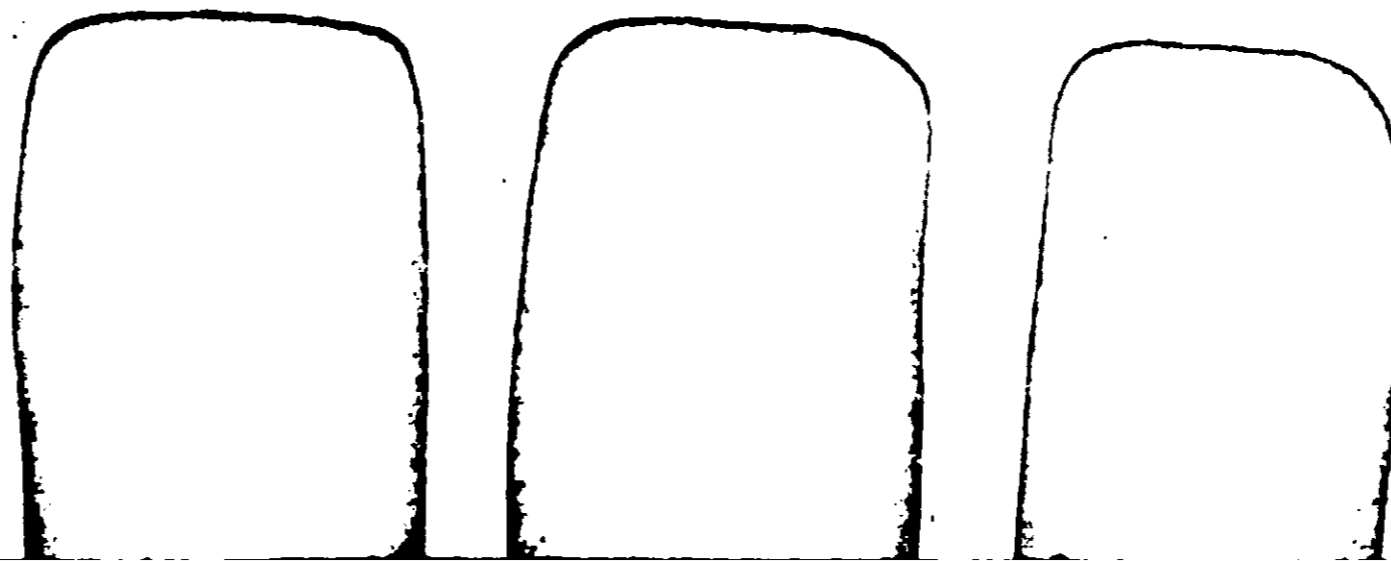
84  
11

green no. 10\*

PREVENTS TERMITES

CUPRINOL®

WOOD  
PRESERVATIVE



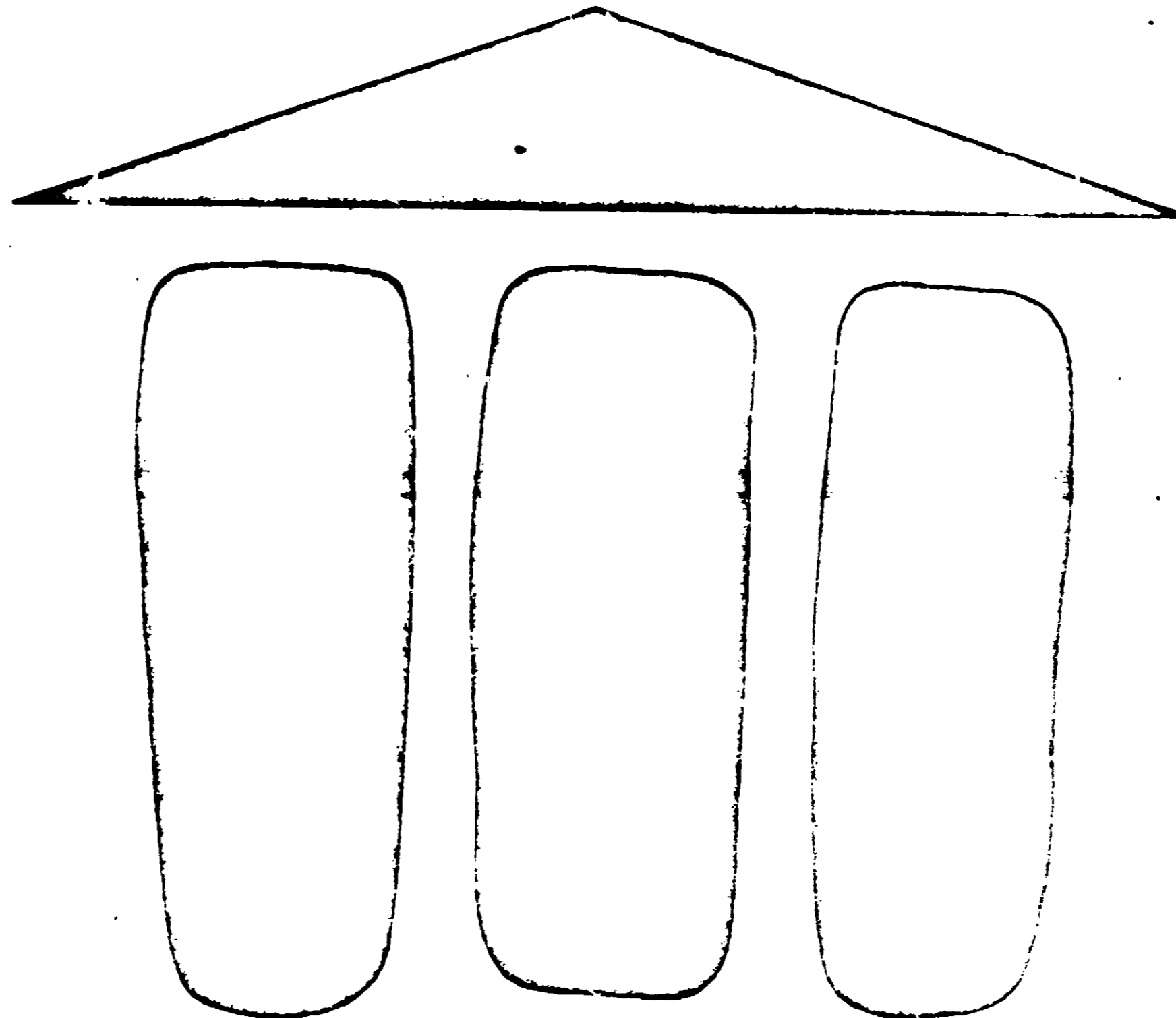
WATER REPELLENT • QUICK DRYING

ACC

STOPS ROT • PREVENTS TER

# PRESERVATIVE

WATER REPELLENT.



ACTIVE INGREDIENTS:  
Copper Naphthenate  
(equivalent to  
metallic copper 2%)

20.00% minimum

INERT INGREDIENTS

80.00% maximum

Total

100.00%

**WARNING:** KEEP OUT OF REACH OF CHILDREN.  
READ CAUTIONS ON BACK USDA Reg. No. 51841

\*NOT A STAIN. COLOR IS FROM FUNGICIDE ONLY

**1 GALLON**

ACCE  
SEP 2  
UNDER THE FEDERAL  
FUNGICIDE AND  
FOR ECONOMIC P  
ED UNDER NO. 3

GEN #10 COPRINOL WOOD PRE  
2.83" x 3.562"

No. 10\*

# WOOD PRESERVATIVE

WATER REPELLENT • QUICK DRYING

**CUPRINOL®**

# WOOD

# PRESERVATIVE

This is the extra strength wood preservative which is world famous among boat owners. It prolongs the life of all wood by protecting against rot, termite damage, mildew, warping and swelling. Greatly reduces the probability of paint peeling.

CUPRINOL - Green No. 10 contains a powerful copper fungicide-insecticide and water repellents for three-way protection. Its extra strength is important for wood used in contact with soil, water and concrete. Apply CUPRINOL liberally to fence posts, poles, foundation sills, docks, boats and all wood exposed to moisture or weather. Fence posts, poles, foundation timbers and heavy wooden members should be free of bark, dry and well-seasoned and immersed in the product for a period of 12 to 48 hours to be an effective wood preserver. Exceeds Federal Specification TT-W-00572a.

Conforms to Air Pollution Control District—City of Los Angeles Rule 66.

The green of CUPRINOL No. 10 is from the copper fungicide and is not a lasting stain. Where a rich, beautiful, lasting color is desired, use CUPRINOL PRESERVATIVE STAIN.

## CAUTION: COMBUSTIBLE MIXTURE

N.Y.F.D. Certificate of Approval No. 3799

Use in a well-ventilated place. Avoid fire, flame, sparks or heaters.

### DIRECTIONS

Apply by brush, roller, spray or dip to clean bare wood. Use one coat under finishes. When no finish is to be used, two generous coats applied within 1 hour, or a 3-minute dip is recommended. Treat cut ends. The more preservative absorbed by the wood, the longer and more effective the protection. CUPRINOL dries to the touch rapidly. Clean excess CUPRINOL from surface with mineral spirits and let dry approximately 24 hours before applying dark paint or finish. Clean CUPRINOL from hands, brushes, etc., with mineral spirits or turpentine.

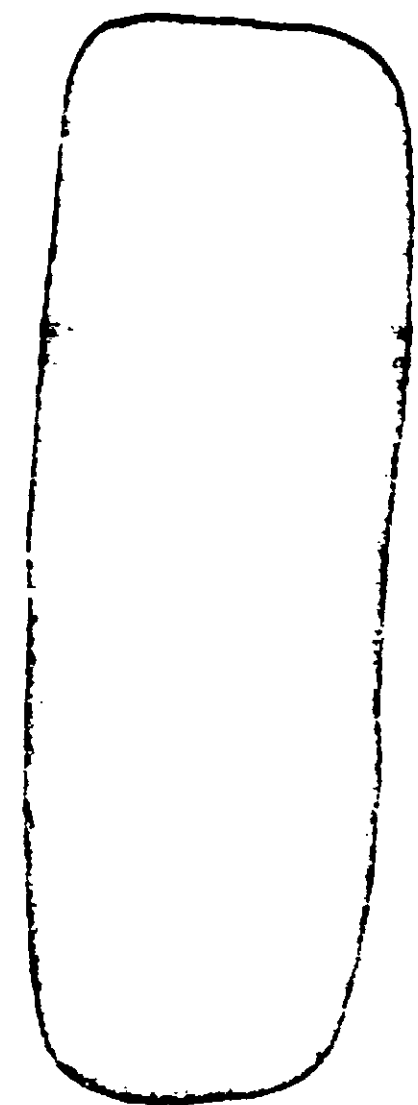
**COVERAGE:** 400 sq. ft. per gallon average, depending on wood porosity and surface roughness.

**CAUTION:** Contains petroleum distillates. Harmful if swallowed. If swallowed, do not induce vomiting. Call physician immediately. Avoid breathing vapor or spray

ACCEPTED

# ACTIVE

# WATER REPELLENT.



0% minimum

0% maximum

0%

H OF CHILDREN.  
K USDA Reg No 51841  
INGICIDE ONLY

LIVE STAIN.

## CAUTION: COMBUSTIBLE MIXTURE

N.Y.F.D. Certificate of Approval No. 3799

Use in a well-ventilated place. Avoid fire, flame, sparks or heaters.

### DIRECTIONS

Apply by brush, roller, spray or dip to clean bare wood. Use one coat under finishes. When no finish is to be used, two generous coats applied within 1 hour, or a 3-minute dip is recommended. Treat cut ends. The more preservative absorbed by the wood, the longer and more effective the protection. CUPRINOL dries to the touch rapidly. Clean excess CUPRINOL from surface with mineral spirits and let dry approximately 24 hours before applying dark paint or finish. Clean CUPRINOL from hands, brushes, etc., with mineral spirits or turpentine.

**COVERAGE:** 400 sq. ft. per gallon average, depending on wood porosity and surface roughness.

**CAUTION:** Contains petroleum distillates. Harmful if swallowed. If swallowed, do not induce vomiting. Call physician immediately. Avoid breathing vapor or spray mist. Avoid contact with skin or eyes. Wash with soap and water after handling. Keep out of reach of children. Do not contaminate water by cleaning of equipment, or disposal of wastes. Do not reuse empty container. Destroy it by perforating or crushing. Bury or discard in a safe place.

### BY THE MAKERS OF:

DARWORTH PANEL ADHESIVE  
TM-4 Washaway Paint Remover

POLYSEAMSEAL Adhesive Caulk  
DARWORTH LATEX CAULK

OLD MASTERS ANTIQUING FINISHES

## Darworth incorporated

AVON, CONN. 06001



**ACCEPTED**  
  
SEP 21 1971  
  
UNDER THE FEDERAL INSECTICIDE  
FUNGICIDE AND RODENTICIDE ACT  
FOR ECONOMIC POISON REGISTERED  
ED UNDER NO. 518-41

E N #10 CUPRINOL WOOD PRESERVATIVE 2.200" x 9.562"	ART NO 21485	LITHO REG. NO. A-5861 B	DESIGN NO. CD-1-35-1327
	ARTIST my	CHECKED BY [Signature]	DATE 5-15-71



**CUPRINOL®**

ACCEPTED  
UNDER THE FEDERAL INSECTICIDE  
FUNGICIDE AND FUNGICIDE ACT  
EPA ECONOMIC POISON REGISTER  
EPA NUMBER 100

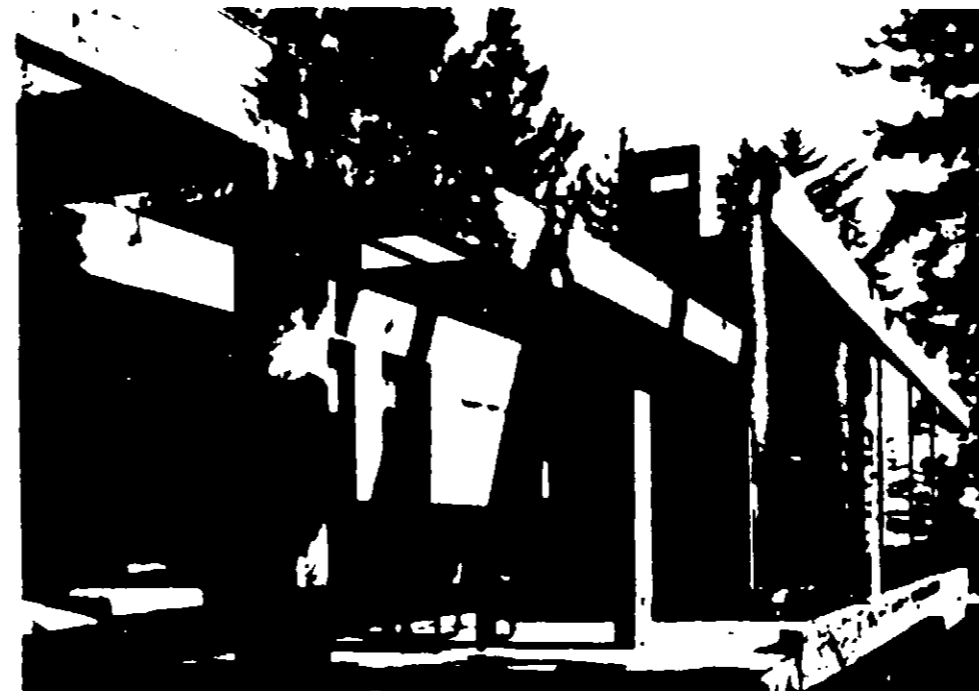
# STAIN & WOOD PRESERVATIVE



This can contains:  
**Evergreen**  
#45  
EPA Reg. No. 518-43



Keeps water out  
Keeps beauty in  
Protects against  
mildew and rot



**WARNING**  
KEEP OUT OF REACH  
OF CHILDREN  
READ CAUTIONS AND  
WARNINGS ON BACK

**1 GALLON**

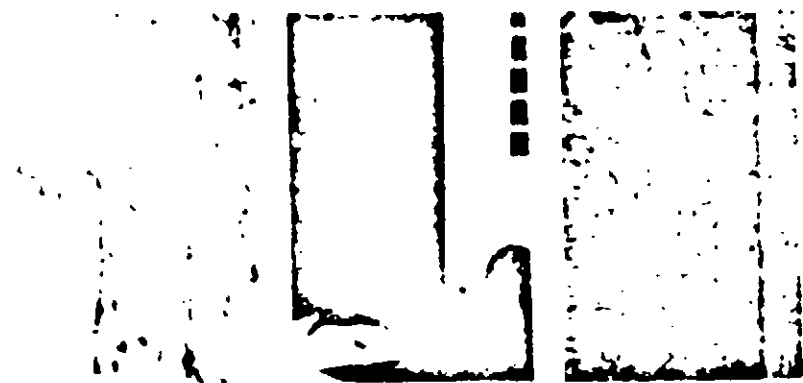
ACTIVE INGREDIENT  
Bis(Tri-n-butyltin) oxide 0.3%  
INERT INGREDIENTS 99.7%  
Total 100.0%

Customer	WALTON	Design	CUPRINOL	Date	11-16-71
Eng.	2/50	Size	C.E. B.P.	Artist	LP
<p><b>READ BEFORE SIGNING:</b> Customer agrees that (1) Continental Can Company, Inc. shall not be liable for (a) any error in the attached unless this proof is returned to Continental with such error plainly noted in writing, (b) the failure of any part of the attached to comply with any local, state or Federal law or regulation, (c) any part of the attached which infringes the property rights of others acquired, without limitation thereof, by usage, registration, copyright, letters patent or otherwise and (d) production colors not being exactly the same as the hand proved colors, if any, in the attached, although Continental will duplicate the colors as closely as possible, (2) Customer shall indemnify and hold Continental harmless against the liability described in (1) above, including attorney fees and court costs or for consequential damages, and (3) the liability of Continental for uncorrected errors plainly noted in the attached shall not exceed the actual cost of the containers bearing the noted error. <b>CHANGES INCREASE COSTS AND DELAY PRODUCTION</b></p>					
Change as Detailed	<input type="checkbox"/>	Approved as Submitted	<input type="checkbox"/>	Customer Signature	Date



CUPRINOL

# STAIN & WOOD PRESERVATIVE



Wood dipped in Cuprinol resists rot.	Protects against mildew discoloration.	Exceeds water repellency requirements of Federal Spec. TT-W-572b. 3.7
--------------------------------------	--	---

### For All Exterior & Interior Stain Uses

CUPRINOL STAIN & WOOD PRESERVATIVE combines beauty and protection for siding, fences and all wood attractive and safe from rot, mildew, discoloration, warping and swelling. CUPRINOL's carefully selected natural staining colors add warmth to wood's natural beauty.

#### Triple protection

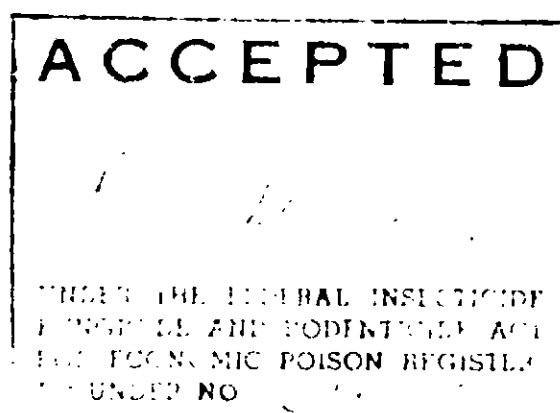
- **Durable, light-fast pigments** screen out the sun's rays and resist fading.
- **Long lasting water repellents** keep out the moisture which promotes pigment wash-off, warping and swelling.
- **Effective fungicide** TBTC - a derivative of meta-cresol prevents rot and mildew which rot that produce rot and mildew and discoloration.

CUPRINOL STAIN & WOOD PRESERVATIVE is easy to apply, has no unpleasant odor and may be painted over.

#### For wood protection when painted or used

- CUPRINOL Green #10 for wood in contact with the ground.
- CUPRINOL Clear #20 for protecting wood above the ground and as an undercoat for paint.

"Trees, Wood and Cuprinol Stain" are illustrated in the following advertisement for a wooden building material's availability from Darworth Incorporated for 1988.



Same copy for call to callers - Cuprinol Stain & Co. cert.

## CAUTION: COMBUSTIBLE MIXTURE

N.Y.F.D. Certificate of Approval No. 3799

DO NOT USE, POUR, SPLASH OR STORE NEAR HEAT OR OPEN FLAME.

CUPRINOL products conform to Air Pollution Control District, City of Los Angeles, Rules.

**Directions:** BEFORE USE THOROUGHLY MIX CONTENTS OF CAN. Stir occasionally during use to keep color uniform. Use on bare, dry, unprimed wood or on previously stained surfaces. Apply liberally by brush, roller, spray or by dipping (siding 3 ft. wide, trimwork 1/2 minutes). Color will vary on natural and treated woods from the sample. White stain on other colors may occur after the color sample brush out is recommended. Do not use on abraded ply wood.

The more preservative absorbed by the wood, the longer and more effective the protection. Thoroughly cover all ends and joints. For best results, apply in the shade at 40°-90°F. Do not thin. This stain may be mixed with Clear CUPRINOL or other CUPRINOL Stain colors. CUPRINOL + PRESERVATIVE STAINS dry to the touch rapidly, but thorough drying requires 24 hours. If desired, a second coat may be applied at any time after the initial application.

Clean CUPRINOL from hands, brushes, etc. with mineral spirits or turpentine.

**Coverage:** Approximately 400 sq. ft. per gallon when brushed on smooth woods. Textured surfaces absorb more stain.

**Warning:** Irritant. Avoid contact with eyes. May be irritating to skin. Causes allergic reactions. Avoid contact with children. Keep out of reach of children. Do not use in confined spaces. Do not use in contact with food and water. Do not use in contact with food and feed materials. Do not use in contact with clothing. Do not use in contact with bedding. Do not use in contact with toys. Do not use in contact with children's toys. Do not use in contact with children's toys. Do not use in contact with children's toys. Do not use in contact with children's toys.

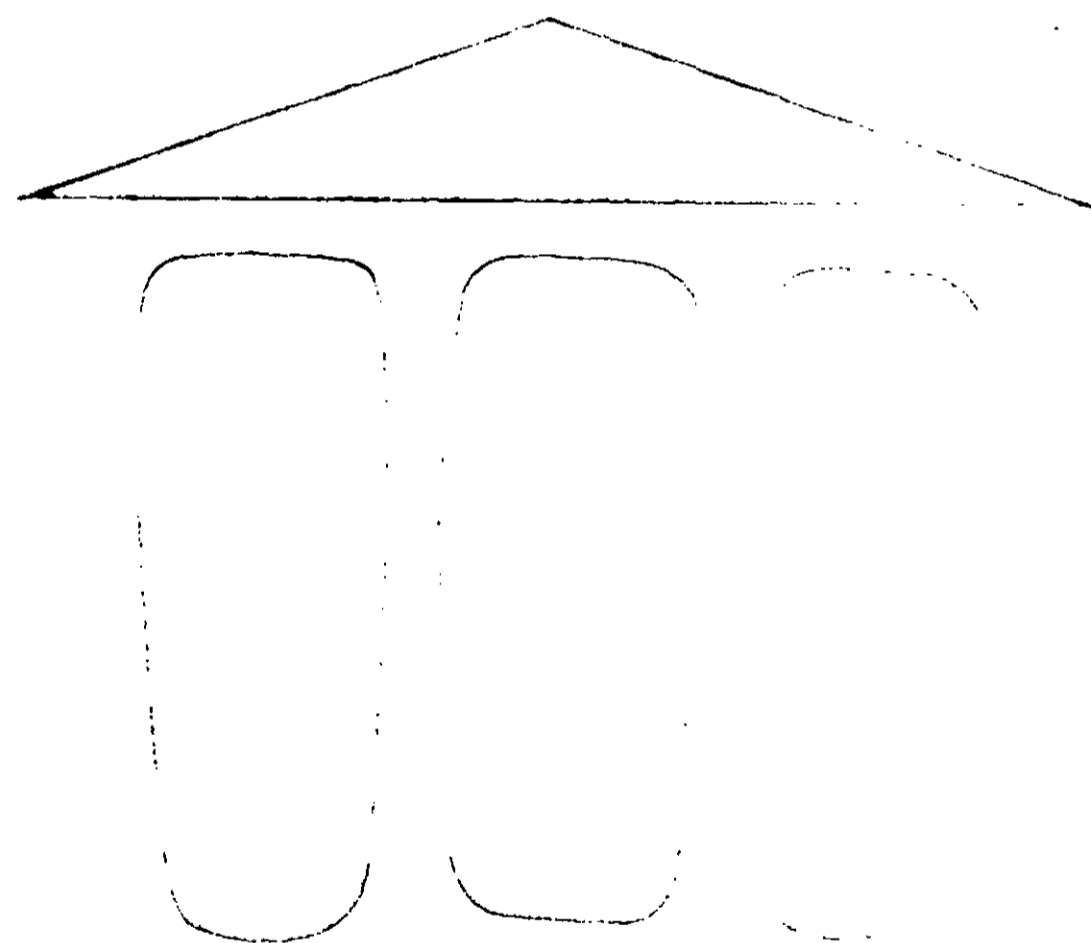
Do not use in contact with children's toys. Do not use in contact with children's toys. Do not use in contact with children's toys. Do not use in contact with children's toys.

**By the makers of:** POLYSEAMSEAL, Aquatec, Caulk, DAWDOR, Latex Caulk, and DOD MASTERS Acrylic and Wood Graining Finishes. All trademarks are the property of Darworth Incorporated.

**Darworth** AVON, CONN. 06001

green no. 10\*

# CUPRINOL® WOOD PRESERVATIVE



ACTIVE INGREDIENTS:	
Copper Naphthenate	20.00% minimum
(equivalent to	
metallic copper 2%)	
INERT INGREDIENTS	80.00% maximum
Total	100.00%

**WARNING:** KEEP OUT OF REACH OF CHILDREN  
READ CAUTIONS ON BACK OF CONTAINER  
NOT A STAIN. COLOR IS FROM COPPER NAPHTHENATE

1 GALLON

WARRANTY • CUPRINOL WOOD PRESERVATIVE

ACCEPTED  
SEP 21 1971  
516 41

...it protects the life of all wood by protecting it from rot, decay, mold, warping, and swelling. Creates a protective barrier against...

...Green No. 10 contains an active ingredient which provides protection for three-way protection. By extra... contact with soil, water and concrete. Apply Cuprinol... foundation, sills, docks, boats and all wood exposed to... posts, pilings, foundation timbers and heavy wooden... dry and well seasoned and immersed in the product for a period of 24 hours to be an effective wood preserver. Exceeds Federal Specification... 17-15057a.

Conforms to Air Pollution Control District, City of New Haven, Conn.

The green of CUPRINOL No. 10 is from the copper... stain. Where a rich, beautiful, lasting color is desired, use CUPRINOL PRESERVATIVE STAIN.

**CAUTION: COMBUSTIBLE LIQUID**  
N.Y.F.D. Certificate of Approval No. 3799  
Use in a well-ventilated place. Avoid fire, flame, sparks or heaters.

**DIRECTIONS**

Apply by brush, roller, spray or dip to clean bare wood. One coat is sufficient. When no finish is to be used, two generous coats applied with brush, roller or dip is recommended. Treat cut ends. The more preservative absorbed, the longer and more effective the protection. Confine drips to the bottom of the container. Wipe excess CUPRINOL from surface with mineral spirits or turpentine 24 hours before applying dark paint or finish. Clean CUPRINOL from hands, etc. with mineral spirits or turpentine.

**COVERAGE:** 400 sq. ft. per gallon average, depending on wood surface and surface roughness.

**CAUTION:** Contains petroleum distillates. Handle with care. Do not inhale vapors. Do not induce vomiting. Call physician immediately. Avoid contact with skin. Must avoid contact with skin or eyes. Wash with soap and water. Keep out of reach of children. Do not contaminate water. Proper disposal of wastes. Do not reuse empty container. Best method of disposal is crushing. Bury or discard in a safe place.

**BY THE MAKERS OF:**  
DARWORTH PANEL ADHESIVE  
T.M. 4 Washaway Paint Remover  
G.D. MASTERS ANTI-RUST FLUORIDE

**Darworth Chemicals, Inc.**  
AVON, CONN. 06001-0000

APPROVED BY	DATE
3-5861 B CD-1-55-327	5/16/71
CHECKED BY	DATE
	5/16/71