

[517-77]

**CAUTION:** Harmful if swallowed. Avoid contamination of feed and foodstuffs. Do not use on edible crops. When used in commercial food preparation areas, foods should be removed or covered during treatment. All food processing surfaces should be covered during treatment, or thoroughly cleaned before using. When using the product in these areas, apply only when not in operation. Cover or remove fishbowls.

**WARNING:** Contents under pressure. Do not puncture. Do not use or store near heat or open flame. Exposure to temperatures above 120 F may cause bursting. Never throw container into fire or incinerator.

**DIRECTIONS FOR USE**

Shake well before each use. Aim spray opening away from people. Push button to spray.

**INDOORS—FOR HOUSEFLIES, MOSQUITOES,**

**AND GNATS:**

Close all doors and windows. Point nozzle upward; direct the spray mist to all parts of the room, especially windows and other light sources which attract these insects. Fill the room with mist; then leave the treated area. Keep the room closed for at least 15 minutes. Ventilate the room when treatment is completed.

**Wags:** Application should be made in late evening when insects are at rest. Spray liberally into hiding and breeding places contacting as many insects as possible. Repeat as necessary.

**INDOORS—FOR CRAWLING INSECTS:**

Roaches, earwigs, grain mites, sowbugs, spiders and centipedes. Spray thoroughly into hiding places such as cracks, crevices, moist areas, opening around pipes and sinks, under refrigerators, seboards, and storage areas. Spray directly on insects where possible. Repeat as necessary.

**Ants:** Spray trails, nests and points of entry. Spray on ants where possible. Repeat as necessary.

**OUTDOORS—TO KILL FLYING INSECTS:**

Control mosquitoes, gnats (midges), houseflies, biting flies and certain flying moths by spraying their resting areas. Follow precautions listed above. Hold container 18 to 24 inches from shrubs, bushes and grassy areas. Spray these areas with a slow sweeping motion at the rate of from 1 to 3 seconds per cubic yard of space while moving away from the treated areas. To reduce annoyance from these flying insects, treat open porches and patios in a similar manner. Spray only when the air is still. Allow spray to dissipate before occupying the treated area. Repeat as necessary.

**OUTDOORS—TO CONTROL ORNAMENTAL**

**PLANT PESTS:**

Aphids, exposed thrips, adult whiteflies, leafhoppers, plant bugs, spittlebugs, Japanese beetles, spiders and mimosa webworm larvae. Spray directly on insects by holding the container 12 to 18 inches from the infested plant. Spray in short bursts of one to three seconds over one linear foot of plant foliage. Direct spray to all sides, covering foliage until slightly moist. Avoid heavy wetting.

Use with caution on the tender foliage of Quince, Juniper cypress, Mulberry, Ash, Cottonaster, Rose, Camellia, Azalea, Pyracantha and Caenothus, as certain varieties have shown some leaf browning with heavier dosages. Repeat applications as necessary.

**OUTDOORS—TO PROTECT ORNAMENTAL PLANTS:**

When infested, spray smaller evergreens, deciduous trees and shrubs as rhododendrons, pines, spruces, hemlock, yews, arborvitae, junipers, holly, podocarpus, boxwood, laurel, filic, spirea, dogwood, palm, tree mimosa, toyan, viburnum, euonymus, oaks, maples, locust, forsythia, arthea for control of aphids and other pests listed above.

**OUTDOORS—TO PROTECT FLOWER GARDEN PLANTS:**

Also spray infested flowering plants as peonies, iris, zinnia, snapdragons, ageratum, chrysanthemums, nasturtium, daisy, geraniums, marigolds, daphne, fatshedera, ivy, tobira, queen sago, broadleaf acacia for the same listed pests. Repeat as necessary.

**OUTDOORS—TO PROTECT HOUSE PLANTS:**

Spray infested African violets, philodendron, geraniums, begonias, coleus for control of listed pests. Repeat application as necessary.

**OUTDOORS—TO CONTROL NUISANCE PESTS:**

**Ants:** Spray trails, nests and points of entry. Spray on ants where possible. Repeat as necessary.

**ACTIVE INGREDIENTS:**

(S-Benzyl-3-furyl)methyl 2,2-dimethyl-3-(2-methylpropenyl)cyclopropanecarboxylate 0.250% W/W  
Related compounds 0.034%  
Aromatic petroleum hydrocarbons 0.332%

**INERT INGREDIENTS:**

99.384%  
100.000%

\*Cis:trans isomers ratio max 30% ( + ) cis and min 70% ( + ) trans

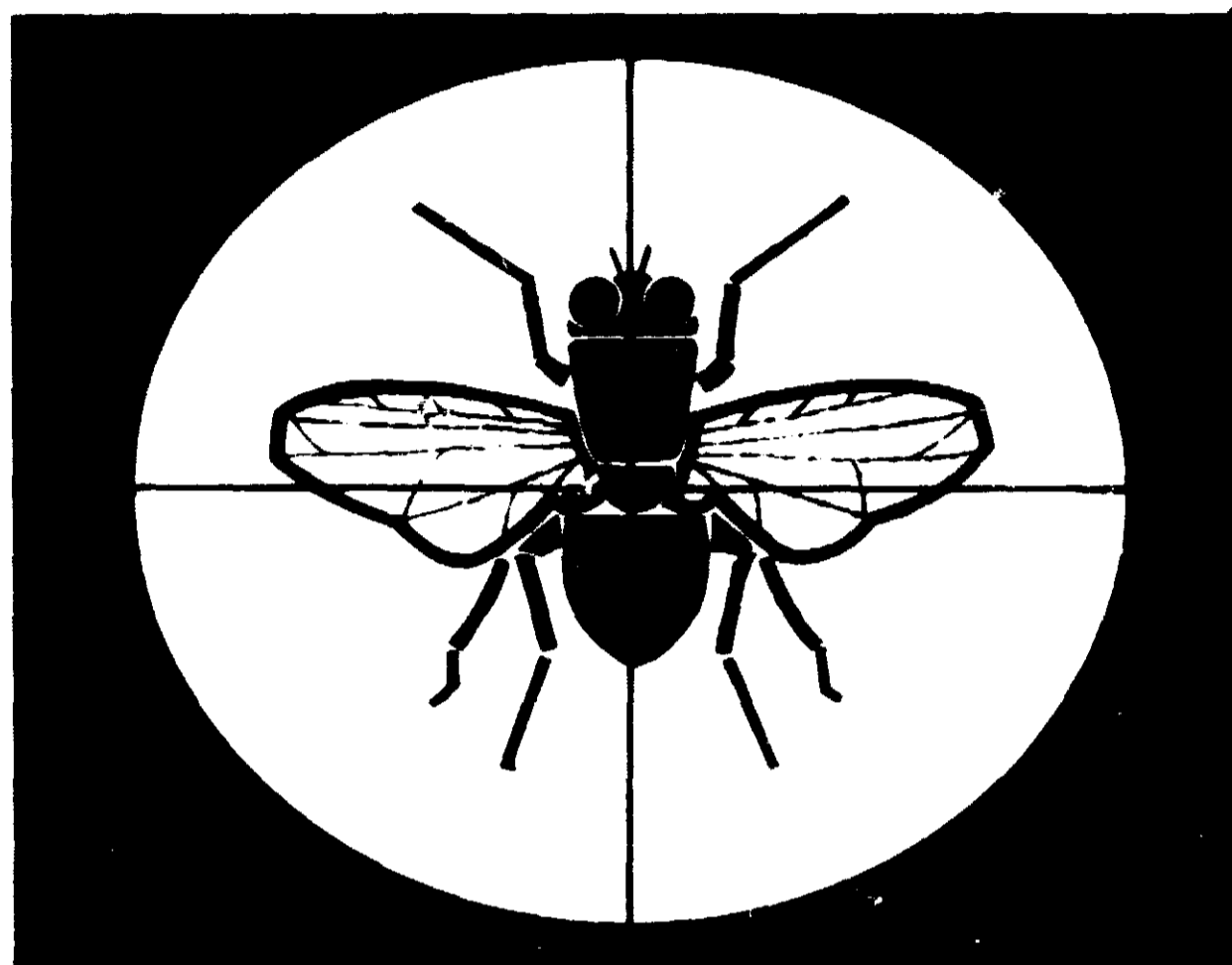
EPA Reg No 517-77-AA  
**Rexall Drug Company**  
St. Louis, Missouri 63115

422261

Made in U.S.A.

DH-4032

**Rexall**®



# Multi-Purpose House & Garden Insect Killer

CAUTION: keep out of reach of children  
see back panel for additional cautions

NET WT. 14 OZ.

ACCEPTED

FEB 16 1973

UNDER THE FEDERAL INSECTICIDE  
FUNCTION AND REGISTRATION ACT  
FOR THE REGISTRATION AND  
SALES OF PESTICIDES  
TO AFFECTED DOMAINS

517-77