

499-561

4 / 25 / 2014

1 / 10



UNITED STATES ENVIRONMENTAL PROTECTION AGENCY
WASHINGTON, D.C. 20460

OFFICE OF CHEMICAL SAFETY
AND POLLUTION PREVENTION

APR 25 2014

Ms. Dana Thomas
Whitmire Micro-Gen Research Laboratories, Inc.
3568 Tree Court Industrial Boulevard
St. Louis, MO 63122-6682

Dear Ms. Thomas:

Subject: Fast track label amendment:
1. Add use in food handling establishments to Section 3 label
2. Supplemental label for use in food handling establishments
TC 315
EPA Registration Number 499-561
Your submissions dated 12/18/2013
OPP Decision Number D 486246

The amendment referred to above is acceptable in accordance with the Federal Insecticide, Fungicide, and Rodenticide Act (FIFRA) section 3(c)(7)(A), subject to the comments and conditions listed below:

1. Submit and/or cite all data required for registration of your product under FIFRA sec. 3(c)(5) when the Agency requires all registrants of similar products to submit such data. You must comply with DCI ID# GDCI 044312-1147 issued on 3/1/2013. If you have questions about the Generic DCI issued, you may contact Steven Snyderman from the Pesticide Re-evaluation Division.

2. Submit one (1) copy of your final printed labeling before you release the product for shipment. Your release for shipment of the product constitutes acceptance of this condition. If this condition is not complied with, the registration will be subject to cancellation in accordance with FIFRA section 6(e).

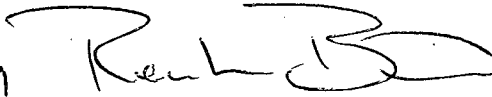
3. Add a statement to indicate that this supplemental label is a subset of the Federal label approved on April 25, 2014.

4. Add an expiration date 12 months from the date of this letter to this supplemental label.

Stamped copies of both the Section 3 and supplemental labels are enclosed for your records.

If you have any questions, contact Rita Kumar at (703) 308-8291 or kumar.rita@epa.gov.

Sincerely,


for Meredith Laws, Chief
Insecticide-Rodenticide Branch
Registration Division (7505P)

Enclosure

TC-315

ALTERNATE BRAND NAMES:

1. Prescription Treatment® brand Alpine® WSG {accepted on original SAL 6/27/12}
2. Alpine® WSG (w/descriptor: Water Soluble Granule Insecticide) {added via Notification 7/5/12; accepted 10/24/12}

KILLS: Ants (including Argentine, Carpenter, Harvester, Odorous House, Red Imported and Southern Fire; excluding Pharaoh), Asian Lady Beetles, Bean Plataspid (= Kudzu Bug), Bed Bugs, Brown Marmorated Stink Bugs, Centipedes, Collembola, Crickets, Earwigs, Fleas, German Cockroaches, House Flies, Millipedes, Mosquitoes (*Anopheles*), Paper Wasps, Pillbugs, Sowbugs, Spiders (excluding Brown Recluse) and Yellowjackets

FOR USE IN AND AROUND: Apartments; Campgrounds; Cemeteries; Clinics; Dog Kennels; Food Handling Establishments; Green Belts; Homes; Hospitals; Hotels; Mausoleums; Mobile Homes; Motels; Food Processing Plants; Nursing Homes; Resorts; Schools; Storage Buildings; Trailers; Transportation Equipment [Autos, Buses, Boats, Ships, Trains, Trucks, Planes (cargo areas only)]; Utilities; Warehouses; Commercial, Industrial and Residential Buildings; Theme Parks; Parks & Recreational Areas, and Zoos

KEEP OUT OF REACH OF CHILDREN

CAUTION

EPA Reg. No 499-561 • EPA Est. No. 67545-AZ-001

Net Weight: _____ [0.35 oz (10g); 1.76 oz (50g); 8.82 oz (250g); 10.6 oz (300g); 1 lb, 1.64 oz (500g)

[Total Net Weight: Single Use Packets: 8.82 oz/250g (25 x 0.35 oz/10g) or (5 x 1.76 oz/50g) or (1 x 8.82 oz/250g). Resealable Plastic Bottles: 2 lb, 10.33 oz/1.2 kg (4 x 10.6 oz/300g); 4 lb, 4.1 oz (4 x 1 lb, 1.64 oz/500g)]

ACTIVE INGREDIENT:

Dinotefuran: N-methyl-N-[(tetrahydro-3-furanyl)methyl]guanidine 40.0%

OTHER INGREDIENTS: 60.0%

TOTAL: 100.0%

FIRST AID

IF IN EYES: Hold eyes open and rinse slowly and gently with water for 15 – 20 min. Remove contact lenses, if present after the first 5 min, then continue rinsing eyes. Call a poison control center or doctor for treatment advice.

Have the product container or label with you when calling a poison control center or doctor, or going for treatment. You may also contact 1-800-832-HELP, 7 days/week; 24 hr/day, for emergency medical treatment information.

PRECAUTIONARY STATEMENTS

HAZARDS TO HUMANS AND DOMESTIC ANIMALS

CAUTION. Causes moderate eye irritation. Avoid contact with eyes or clothing. Wash hands thoroughly with soap and water after handling and before eating, drinking, chewing gum, using tobacco or using the toilet. Wear long-sleeved shirt and long pants, socks and shoes, and chemical-resistant gloves (made out of any waterproof material, such as Natural Rubber, selection Category A).

**ACCEPTED
APR 2 5 2014**

**Under the Federal Insecticide, Fungicide,
and Rodenticide Act, as amended, for the
pesticide registered under:**

USER SAFETY RECOMMENDATIONS

Users should:

- Wash hands before eating, drinking, chewing gum, using tobacco or using the toilet.
- Remove clothing/PPE immediately if pesticide gets inside. Then wash thoroughly and put on clean clothing.
- Remove PPE immediately after handling this product. Wash the outside of gloves before removing. As soon as possible, wash thoroughly and change into clean clothing.

ENVIRONMENTAL HAZARDS

This pesticide is toxic to aquatic invertebrates. Do not apply directly to water, or to areas where surface water is present or to intertidal areas below the mean high water mark. Do not apply when weather conditions favor drift from treated areas. Drift and runoff from treated areas may be hazardous to aquatic organisms in water adjacent to treated areas. Do not dispose equipment washwaters or rinsate into a natural drain or water body.

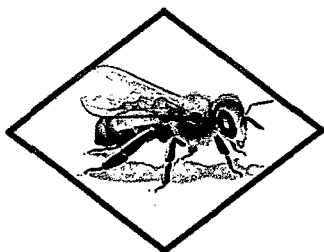
This product is toxic to honey bees. The persistence of residues and potential residual toxicity of Dinotefuran in nectar and pollen suggests the possibility of chronic toxic risk to honey bee larvae and the eventual instability of the hive.


- This product is toxic to bees exposed to residues for more than 38 hours following treatment.
- Do not apply this product to blooming, pollen-shedding or nectar-producing parts of plants if bees may forage on the plants during this time period, unless the application is made in response to a public health emergency declared by appropriate state or federal authorities.

Dinotefuran and its degradate, MNG, have the properties and characteristics associated with chemicals detected in groundwater. The high water solubility of Dinotefuran, and its degradate, MNG, coupled with its very high mobility, and resistance to biodegradation indicates that this compound has a strong potential to leach to the subsurface, under certain conditions, as a result of label use. Use of this chemical in areas where soils are permeable, particularly where the water table is shallow, may result in groundwater contamination.

PROTECTION OF POLLINATORS [this section to be boxed]

APPLICATION RESTRICTIONS EXIST FOR THIS PRODUCT BECAUSE OF RISK TO BEES AND OTHER INSECT POLLINATORS. FOLLOW APPLICATION RESTRICTIONS FOUND IN THE DIRECTIONS FOR USE TO PROTECT POLLINATORS.



Look for the bee hazard icon  in the Directions for Use for each application site for specific use restrictions and instructions to protect bees and other insect pollinators.

TC-315 [Alternate Brand Name] product can kill bees and other insect pollinators.

Bees and other insect pollinators will forage on plants when they flower, shed pollen, or produce nectar.

Bees and other insect pollinators can be exposed to this pesticide from:

- Direct contact during foliar applications, or contact with residues on plant surfaces after foliar applications
- Ingestion of residues in nectar and pollen when the pesticide is applied as a seed treatment, soil, tree injection, as well as foliar applications.

When Using This Product Take Steps To:

- Minimize exposure of this product to bees and other insect pollinators when they are foraging on pollinator attractive plants around the application site.
- Minimize drift of this product on to beehives or to off-site pollinator attractive habitat. Drift of this product onto beehives or off-site to pollinator attractive habitat can result in bee kills.

Information on protecting bees and other insect pollinators may be found at the Pesticide Environmental Stewardship website at: <http://pesticidestewardship.org/PollinatorProtection/Pages/default.aspx>.

Pesticide incidents (for example, bee kills) should immediately be reported to the state/tribal lead agency. For contact information for your state, go to: www.aapco.org/officials.html. Pesticide incidents should also be reported to the National Pesticide Information Center at: www.npic.orst.edu or directly to EPA at: beekill@epa.gov

PHYSICAL AND CHEMICAL HAZARDS

Do not apply water-based sprays of this product to conduits, motor housing, junction and switch boxes or other electrical equipment because of possible shock hazard. Do not spray where electrical short circuits might result, such as wall outlets, conduits, etc.

DIRECTIONS FOR USE

IT IS A VIOLATION OF FEDERAL LAW TO USE THIS PRODUCT IN A MANNER INCONSISTENT WITH ITS LABELING.



Do not apply this product while bees are foraging. Do not apply this product to plants that are flowering. Only apply after all flower petals have fallen off.

USE RESTRICTIONS:

- Do not apply within aircraft cabins.
- Do not use in outdoor residential misting systems.
- Do not apply to humans or their clothing, or to mattresses. Do not allow children or pets to contact treated surfaces until spray has dried.
- Do not apply to household pets. Cover fish tanks prior to application near tanks.
- Do not apply this product in patient rooms while occupied.
- Do not apply to classrooms when in use.
- Do not apply in food/feed areas of food handling establishments. When applying in residential or commercial structures, do not contaminate food, feed stuffs or water supply. Do not contaminate food preparation surfaces, kitchen utensils, dishes or food/feed storage containers. Cover any food/feed contact surfaces and cooking utensils, in the treatment area, before treatment or thoroughly clean after treatment and before using.
- Apply to the point just prior to runoff. Do not allow application to drip or run from surfaces.

PRODUCT INFORMATION

This product is a water-soluble granule containing the non-repellent active ingredient, dinotefuran. Apply indoors and/or outdoors via Crack & Crevice, spot or surface application for the listed pests and use sites.

MIXING INSTRUCTIONS

Thoroughly clean spray equipment before mixing and application of this product.

0.35 oz (10g) Packet: Add approximately 1/2 of the water to the spray tank. Tear open the packet and add contents to water, then complete the filling of the spray tank. Agitate the tank until the product is completely dissolved. Reagitate finished dilution if application is interrupted for an extended period of time or if dilution is left in tank overnight.

1.76 oz (50g) Packet (*alternate packaging*): Add approximately 1/2 of the water to the spray tank. Tear open the packet and add contents to water, then complete the filling of the spray tank. Agitate the tank until

the product is completely dissolved. Reagitate finished dilution if application is interrupted for an extended period of time or if dilution is left in tank overnight.

8.82 oz (250g) Packet (for use in power spray rig or large spray tank): Add approximately 1/2 of the water to the spray tank. Tear open the packet and add contents to water, then complete the filling of the spray tank. Agitate the tank until the product is completely dissolved. Reagitate finished dilution if application is interrupted for an extended period of time or if dilution is left in tank overnight.

10.6 oz (300g) Resealable plastic, Tip 'n Measure bottle (dispenses 10g at a time): Add approximately 1/2 of the water to the spray tank. Add 10 – 30g of product to water, then complete the filling of the spray tank. Agitate the tank until the product is completely dissolved. Reagitate finished dilution if application is interrupted for an extended period of time or if dilution is left in tank overnight.

1 lb, 1.64 oz (500g) Resealable plastic bottle (alternate packaging): Add approximately 1/2 of the water to the spray tank. Add 10 – 30g of product to water per 1,000 ft² area being treated (1T = 10g), then complete the filling of the spray tank. Agitate the tank until the product is completely dissolved. Reagitate finished dilution if application is interrupted for an extended period of time or if dilution is left in tank overnight.

SPRAY DILUTION CHART

Desired Finished Dilution Concentration	Amount of product to make 1 gal of finished dilution to treat up to 1,000 ft ²	Amount of product to make 5 gal of finished dilution to treat up to 5,000 ft ²	Amount of product to make 25 gal of finished dilution to treat up to 25,000 ft ²	Amount of product to make 50 gal of finished dilution to treat up to 50,000 ft ²
0.1%	10g	50g	250g	500g
0.2%	20g	100g	500g	1,000g
0.3%	30g	150g	750g	1,500g

Refer to specific pest categories below for the proper use rate. **One gallon of finished dilution treats 1,000 ft².** Depending on the surface, more or less water may be used to properly treat areas with different application apparatus, but the proper amount of active ingredient should be used per square footage.

Tank Mixing: This product may be tank mixed with other water based insecticides including, but not limited to insect growth regulators (IGR), quick knockdown products and residuals. Before mixing test to see if products are compatible. When tank mixing, follow the more restrictive label use directions of the mixed products.

VOID/CRACK & CREVICE® APPLICATION

Apply into cracks, crevices and voids with equipment designed for such applications. Follow the manufacturer's recommendations for proper equipment set-up and operating pressures. Place the tip of the applicator at or into the crack, crevice or void to be treated. Apply product in short bursts while keeping tip in position. Allow the air stream to push the finished dilution into voids and/or cracks and crevices. Apply in such a manner to avoid dripping and runoff.

INDOOR APPLICATIONS

Dilute to the proper concentration according to targeted pest infestation. Follow the mixing directions found in the dilution chart. Use 1 fl oz of finished dilution per 7 – 10 ft².

Crawling Insects/Pests [including: German Cockroaches, Pillbugs, Crickets, Millipedes and Spiders (excluding: Brown Recluse)] (30g/gal): Make spot and/or Crack & Crevice applications into hiding places and entry points such as cracks and crevices, void areas, moist areas, openings around pipes and sinks, under refrigerators or vending machines; interiorscapes, across lower doorway frame and window openings.

House Flies (20g/gal): Make spot applications on surfaces where flies frequently roost such as door and window frames, screens, trash cans, plants, interiorscapes, ceilings and upper wall surfaces.

Bed Bugs (30g/gal): Make spot and/or Crack & Crevice and/or void applications where evidence of bed bug infestation occurs or bed bugs are suspected, such as bed frames; box springs; inside empty dressers, clothes closets and luggage; carpets; draperies; furniture; headboards; high and low wall moldings and wallpaper edges. Do not apply to mattresses.

Ants [excluding Pharaoh] (10g/gal): Make spot, Crack & Crevice and/or void applications where ants may be foraging and/or nesting, such as, around doors, window frames, under sinks, around pipes and in pipe voids, attic venting and other areas where ants may find access or nest.

Fleas (10g/gal): Apply to infested areas or potentially infested areas, such as rugs, floors, carpets, upholstered furniture, pet beds and pet resting areas. When applying to upholstered furniture, treat under cushions and areas where flea development can occur. **Do not treat pets with this product.**

FOOD/FEED HANDLING ESTABLISHMENTS

Food/Feed handling establishments are places other than private residences in which food is held, processed, prepared or served, including those operating under the Federal meat, poultry, shell egg grading and egg products inspection programs. **APPLICATIONS OF THIS PRODUCT IN FOOD/FEED AREAS OF FOOD/FEED HANDLING ESTABLISHMENTS MAY BE MADE AS A CRACK & CREVICE, VOID, SPOT OR GENERAL TREATMENT.** General surface application may be used only when the facility is not in operation, provided exposed food/feed has been covered or removed from the area prior to application.

FOOD/FEED AREAS: Include areas for receiving, serving, storing (dry, cold, frozen, raw), packing (canning, bottling, wrapping, boxing), preparing (cleaning, slicing, cooking, grinding), edible waste storage and enclosed processing systems (mills, dairies, edible oils, syrups).

NON-FOOD/FEED AREAS: Include areas such as garbage rooms, lavatories, floor drains (to sewers), entries and vestibules, offices, locker rooms, machine rooms, boiler rooms, garages, mop closets and storage areas (after packaging, canning or bottling).

Avoid contamination of food/feed or food/feed contact surfaces. Remove or cover food/feed, dishes, utensils, food processing equipment, and food preparation surfaces, in the treatment area, or wash them before use. Apply as a Crack & Crevice, void, spot or general treatment to selective surfaces such as baseboards, under elements of construction, stainless steel equipment, shelving, machinery, storage areas, pallets, tables, chairs and other areas where listed pests may be harboring, traveling, breeding or entering the structure. Maximum use rate = 0.05 g ai/lb ft. Reapplications may be made at 3 day intervals when applying as a Crack & Crevice, void or spot treatment, or at 6 day intervals when applying as a general surface treatment.

INDOOR AND OUTDOOR APPLICATIONS

Asian Lady Beetles, Brown Marmorated Stink Bugs, Bean Plataspid (= Kudzu Bugs) and Centipedes (30g/gal): Make spot, Crack & Crevice and/or void applications where these pests may harbor or hibernate, such as cracks and crevices, in weep holes, wall voids, around window and door frames, attics and behind siding. Apply to exterior wall surfaces around entry points and resting areas where insects congregate.

Carpenter Ants (20g/gal): Make spot, Crack & Crevice and/or void applications to any trails, inside or outside, around doors and windows and other places where ants may enter premises (such as atriums, attic venting, crawl spaces, ceilings, fences, exterior building surfaces, landscape timbers, garages, hollow doors, soffits, wall voids, weep holes and other void areas). Where possible, directly apply to ant nests or infested wood or trees.

Paper Wasps and Yellowjackets (30g/gal): To treat a yellowjacket or wasp nest, apply liberally to the nest and the surrounding area. For nests inside wall voids, inject an amount sufficient to treat the entire nest. Most applications should require about 0.5 gal of diluted material. Pay attention to surfaces or items that the product may contact (i.e. electrical wiring). Do not use where there is an electrical shock hazard.

THIS PRODUCT DOES NOT PROVIDE INSTANT KNOCKDOWN.

OUTDOOR APPLICATIONS

[NOTE TO REVIEWER: One of the following statements will appear on the marketplace label.]

"Do not apply this product, by any application method, to linden, basswood or other *Tilia* species [Alternate text for inclusion of additional crops as needed]." in the State(s) of Oregon [Alternate text for inclusion of additional states as needed: State name(s)]."

Or

"Do not apply this product, by any application method, to linden, basswood or other *Tilia* species. [Alternate text for inclusion of additional crops as needed]"

Exterior Structural and Surrounding Area Applications for Crawling Insects/Pests [including: Collembola, Crickets, Earwigs, Millipedes, Pillbugs, Sowbugs and Spiders (excluding Brown Recluse)] (30g/gal): Directly contacting pests, apply where pests rest, trail and harbor, such as structural and other voids [including voids associated with and around doors, windows, utility entry points, behind siding, weep holes and tree hollows], eaves of structures, around lights or other insect attractant areas, foliage, bushes, landscape materials, garbage receptacles, under trees and other shaded areas.

House Flies (20g/gal): Apply to outside surfaces of screens, doors, window frames, porches, in garages, on foliage or wherever flies enter or congregate around or on the building, directly contacting flies. Apply to inside and outside surfaces of dumpsters, other trash holding containers and surrounding surfaces, directly contacting flies. Begin applications at the start of fly season and repeat during periods of heavy fly activity.

Fleas (10g/gal): Apply to yards, porches, patios or other areas of habitation for fleas, especially areas that pets frequent, directly contacting fleas. Pay particular attention to shaded areas with low protective covering such as under bushes, under decks, lawn furniture, lawn ornaments and other landscape materials. Apply to pet entry areas such as steps and stoops and other areas where pets rest or sit for extended periods of time, directly contacting fleas.

Ants [excluding Pharaoh] (10g/gal): Make spot and/or Crack & Crevice applications to any foraging trails, nests or mounds where ants are present. Make spot and/or Crack & Crevice applications to exterior areas where ants may enter a structure. Where possible, directly apply to ant nests or infested wood or trees. Curative broadcast applications can be made to yards, lawns, fields, parks, cemeteries, landscaping and structures. To help prevent infestations, make exterior structural and surrounding area applications according to this label.

Mosquitoes (*Anopheles*) (20g/gal): Apply using hand-held, back-pack or truck mounted sprayers only. Not for use with truck mounted or handheld cold aerosol ULV sprayers, or thermal fogging devices. Do not apply by aircraft. Use up to 50 gal of diluted spray per 50,000 ft². Apply to shrubbery, vegetation and other areas where mosquitoes may rest. Shrubby and vegetation around stagnant pools, marshy areas, ponds and shorelines may be treated if applied as a wet spray. Direct application of this product to any body of water is prohibited.

STORAGE AND DISPOSAL

Do not contaminate water, food or feed by storage or disposal.

PESTICIDE STORAGE: Store in a cool, dry area away from heat or open flame.

PESTICIDE DISPOSAL: Wastes resulting from the use of this product may be disposed of on site or at an approved waste disposal facility.

CONTAINER HANDLING [single-use packets]: Nonrefillable container. Do not reuse or refill this container. Offer empty packet for recycling, if available, or dispose of in the trash or by incineration, or if allowed by state and local authorities, by burning. If burned, stay out of smoke.

CONTAINER HANDLING [250g resealable pouch]: Nonrefillable container. Do not reuse or refill this container. **If empty:** Place in trash or offer for recycling, if available. **If partly filled:** Call your local solid waste agency for disposal instructions. Never place unused product down any indoor or outdoor drain.

CONTAINER HANDLING [resealable plastic bottle]: Nonrefillable container. Do not reuse or refill this container. Triple rinse as follows: Empty the remaining contents into application equipment or a mix tank. Fill the container 1/4 full with water and recap. Shake for 10 seconds. Pour rinsate into application equipment or a mix tank or store rinsate for later use or disposal. Drain for 10 seconds after the flow begins to drip. Repeat this procedure two more times. Then for recycling, if available, or puncture and dispose of in a sanitary landfill, or by incineration, or, if allowed by state and local authorities, by burning. If burned, stay out of smoke. **If partly filled:** Call your local solid waste agency for disposal instructions. Never place unused product down any indoor or outdoor drain.

CONDITIONS OF SALE AND WARRANTY

Follow the **Directions for Use**. It is impossible to eliminate all risks inherently associated with use of this product, and therefore all such risk shall be assumed by the Buyer. Whitmire warrants that this product conforms to the chemical description on the label and is reasonably fit for the purposes referred to in the **Directions for Use**, subject to the inherent risks, referred to above. TO THE EXTENT CONSISTENT WITH APPLICABLE LAW: (A) WHITMIRE MAKES NO OTHER WARRANTIES EXPRESS OR IMPLIED, INCLUDING WARRANTIES OF FITNESS FOR PARTICULAR PURPOSE OR MERCHANTABILITY, (B) BUYER'S EXCLUSIVE REMEDY AND WHITMIRE'S AND SELLER'S EXCLUSIVE LIABILITY, WHETHER IN CONTRACT, TORT, NEGLIGENCE, STRICT LIABILITY, OR OTHERWISE, SHALL BE LIMITED TO REPAYMENT OF THE PURCHASE PRICE OF THE PRODUCT, AND (C) WHITMIRE AND THE SELLER DISCLAIM ANY LIABILITY FOR CONSEQUENTIAL, INCIDENTAL, SPECIAL OR INDIRECT DAMAGES RESULTING FROM THE USE OR HANDLING OF THIS PRODUCT. Whitmire and the Seller offer this product, and the Buyer accepts it, subject to these **Conditions of Sale and Warranty** which may be varied only by agreement in writing signed by a duly authorized representative of Whitmire.

Manufactured for:
Whitmire Micro-Gen Research Laboratories, Inc.®
by BASF Corporation
3568 Tree Court Industrial Blvd.
St. Louis, MO 63122-6682
Questions? Call 1-800-777-8570

© 2014 Whitmire Micro-Gen Research Laboratories, Inc.®

Supplemental Label

TC-315 (Alpine® WSG)

ACTIVE INGREDIENT:

Dinotefuran: N-methyl-N-[(tetrahydro-3-furanyl)methyl]guanidine 40.0%

OTHER INGREDIENTS: 60.0%

TOTAL: 100.0%

EPA Reg. No. 499-561

DIRECTIONS FOR USE

IT IS A VIOLATION OF FEDERAL LAW TO USE THIS PRODUCT IN A MANNER INCONSISTENT WITH ITS LABELING.

- The supplemental labeling and the entire TC-315 (Alpine WSG) container label, EPA Reg. No. 499-561, must be in possession of the user at the time of application.
- Read the label affixed to the container before applying.
- Use of this product according to this labeling is subject to the use precautions and limitations imposed by the label affixed to the container for TC-315 (Alpine WSG).

FOOD/FEED HANDLING ESTABLISHMENTS

Food/Feed handling establishments are places other than private residences in which food is held, processed, prepared or served, including those operating under the Federal meat, poultry, shell egg grading and egg products inspection programs. **APPLICATIONS OF THIS PRODUCT IN FOOD/FEED AREAS OF FOOD/FEED HANDLING ESTABLISHMENTS MAY BE MADE AS A CRACK & CREVICE, VOID, SPOT OR GENERAL TREATMENT.** General surface application may be used only when the facility is not in operation, provided exposed food/feed has been covered or removed from the area prior to application.

FOOD/FEED AREAS: Include areas for receiving, serving, storing (dry, cold, frozen, raw), packing (canning, bottling, wrapping, boxing), preparing (cleaning, slicing, cooking, grinding), edible waste storage and enclosed processing systems (mills, dairies, edible oils, syrups).

NON-FOOD/FEED AREAS: Include areas such as garbage rooms, lavatories, floor drains (to sewers), entries and vestibules, offices, locker rooms, machine rooms, boiler rooms, garages, mop closets and storage areas (after packaging, canning or bottling).

Avoid contamination of food/feed or food/feed contact surfaces. Remove or cover food/feed, dishes, utensils, food processing equipment, and food preparation surfaces, in the treatment area, or wash them before use. Apply as a Crack & Crevice, void, spot or general treatment to selective surfaces such as baseboards, under elements of construction, stainless steel equipment, shelving, machinery, storage areas, pallets, tables, chairs and other areas where listed pests may be harboring, traveling, breeding or entering the structure. Maximum use rate = 0.05 g ai/in ft. Reapplications may be made at 3 day intervals when applying as a Crack & Crevice, void or spot treatment, or at 6 day intervals when applying as a general surface treatment.

Whitmire Micro-Gen Research Laboratories, Inc.®
3568 Tree Court Industrial Blvd.
St. Louis, MO 63122-6682
Questions? Call 1-800-777-8570

© 2014 Whitmire Micro-Gen Research Laboratories, Inc.®