

AUG 12 1999

Ms. Dana Thomas  
Whitmire Micro-Gen Research Laboratories Inc.  
3568 Tree Court Industrial Blvd.  
St. Louis, MO 63122-6682

Dear Ms. Thomas:

Subject: Amendments - Add scavenger Yellowjacket bait,  
Stored product pests, and  
Home lawns directions; and  
Update label  
Whitmire TKO Microencapsulated Diazinon PT 265  
EPA Registration Number 499-330  
Your submission dated May 7, 1999

The amendments referred to above, submitted in connection with registration under FIFRA section 3(c)(7)(a), are acceptable provided that you:

1. Submit and/or cite all data or other material required for registration/reregistration of your product under FIFRA section 3(c)(5) or FIFRA section 4 when the Agency requires all registrants of similar products to submit such data.
2. Make the labeling changes listed below before you release the product for shipment bearing the amended labeling:
  - a) Revise front panel limitation "Not for Use in USDA Meat and Poultry Plants" to "Not for use in Federally inspected meat and poultry plants".
  - b) In the FIRST AID section, in the IF SWALLOWED advice delete "or blunt object". Also, at the end of the second sentence in this same section add "or convulsing" after "unconscious".
  - c) In the FIRST AID section, in the IF IN EYES advice replace "Call a physician if symptoms occur." with "Get medical attention."

d) Under the heading **Food/Feed Areas of Food and Feed Handling Establishments** revise the definition to read:

"Food/Feed areas include areas for receiving, storage (dry, cold, frozen, raw), preparing (cleaning, slicing, cooking, grinding), serving (when food is exposed and facility is in operation), packaging (canning, bottling, wrapping, boxing), edible waste storage and enclosed processing systems (mills, dairies, and systems for processing edible oils and syrups).

3. Submit three (3) copies of your final printed labeling before you release the product for shipment.

If these conditions are not complied with, the registration will be subject to cancellation in accordance with FIFRA section 6(e). Your release for shipment of the product constitutes acceptance of these conditions.

A stamped copy of the label is enclosed for your records.

Sincerely,

George T. LaRocca  
Product Manager 13  
Insecticide/Rodenticide Branch  
Registration Division (7505C)

# Whitmire TKO™

Microencapsulated Diazinon\*

PT\* 265

**ACTIVE INGREDIENT:**

Diazinon ..... 23.0%

**INERT INGREDIENTS:** ..... 77.0%

\* Diazinon is a registered trademark of Ciba Geigy Corporation.

EPA Reg. No. 499-330

EPA Est. No. 499-MO-1

**KEEP OUT OF REACH OF CHILDREN**

**CAUTION**

See supplemental label for additional  
Precautionary Statements.

**NET CONTENTS: 1.97 Quarts**  
(63 fl. oz.)



**WHITMIRE MICRO-GEN**  
RESEARCH LABORATORIES, INC.  
800-777-8570

TKO Container Label 499 Amendment

**ACCEPTED**  
with **COMMENTS**  
In EPA Letter Dated:

**AUG 12 1999**

Under the Federal Insecticide,  
Fungicide, and Rodenticide Act,  
as amended, for the pesticide  
registered under EPA Reg. No.

499-330

**Ants, Crickets, Cockroaches:** For treatment of localized infestations of these insects in outdoor areas which are landscaped, planted, mulched or unmaintained, spray infested areas thoroughly. For ants, thoroughly wet hills and runways. Repeat applications as infestation warrant and as re-infestations occur.

**BAITING DIRECTIONS  
FOR SCAVENGER YELLOWJACKETS**

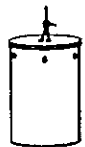
**BAIT PREPARATION AND DISPENSER DISTRIBUTION:** To about 3 ounces (6 level tablespoons) of the preferred bait, add 1/2 teaspoon of TKO™ PT® 265. This amount of bait is sufficient for one dispenser. Do not mix more than the recommended amount of TKO™ PT® 265 to the desired bait or yellowjacket avoidance may occur.

Mix only enough bait for immediate use in the desired number of dispensers. Add bait to each dispenser until it reaches about midway between the container bottom and the access holes. Hang the dispenser, preferably in a sunny location, from tree limb or other suitable support around the periphery of the area to be protected. For best results, use 3 to 4 dispensers per acre, or place them about 100 feet apart.

**RE-APPLICATION AND BAIT LONGEVITY:** Replenish dispensers with fresh bait as long as yellowjackets are present. Unused bait will probably be unattractive to yellowjackets after 2 days, especially if temperatures are above 90° F. If possible, stir bait once each day before yellowjacket activity begins in order to bring fresh bait to the surface. If pest yellowjackets re-appear in late summer, retreat the area.

Properly dispose of any unused or stale bait. Do not re-use dispensers for any other purpose.

**BAIT ATTRACTIVENESS:** Attractiveness of baits to yellowjackets is highly variable and is dependent on such factors as stage of reproductive cycle, type of bait, quality of bait, etc. Before using TKO™ PT® 265, it is recommended that bait preference be determined by placing several candidate baits in a location where yellowjackets activity is occurring. By observing the visitation frequency for a short time, preference will become apparent.



**BAIT DISPENSER:** In a four to six ounce non-food container with a removable top, drill three to six holes 5/8" to 1 1/16" in diameter around the top of container and two small holes (for attaching wire) in the top.

**BAIT SOURCES AND SUGGESTIONS:** TKO™ PT® 265 is recommended for use with any of the baits from the categories listed below. In order to maximize efficiency, particles of the selected bait should be reduced to 1/8" diameter or smaller. If any bait is dry after preparation, add sufficient water to increase the total moisture content.

**Canned Pet Foods** - Cat food containing fish is generally the most attractive bait, although meat and poultry products usually are suitable.

**Fresh Meat, Fish, and Poultry** - Hamburger or salmon is generally the most attractive bait. The selected product should be cooked until the red color barely disappears. Some products, like red salmon, will retain a red color even after cooking. All traces of free grease should be removed.

**Canned Meal, Fish, Poultry and Processed Meats (ham, cold cuts, etc.)** - These products are often very attractive to yellowjackets and need not be cooked.

**STORAGE AND DISPOSAL**

To avoid harming aquatic organisms in rivers and other surface waters, do not pour the concentrate, spray mixture, or rinse water into sanitary drains (for example, toilets, floor drains and sinks) or into storm water sewers (for example street drains). Do not contaminate water, food or feed by storage or disposal.

**STORAGE:** Store in original container only, preferably in a locked storage area. Do not store in a manner where cross contamination with other pesticides, fertilizer, food or feed could occur. If spilled during storage or handling, soak up spillage with absorbent material and dispose of in accordance with Pesticide Disposal Instructions listed below.

**PESTICIDE DISPOSAL:** Wastes resulting from the use of this product may be disposed of on site or at an approved waste disposal facility.

**CONTAINER DISPOSAL:** Triple rinse container, then offer for recycling or reconditioning, or puncture and dispose of in a sanitary landfill, or by incineration, or if allowed by state and local authorities, by burning. If burned, stay out of smoke.

**PRECAUTIONARY STATEMENTS**

**HAZARDS TO HUMANS AND DOMESTIC ANIMALS**

**CAUTION:** Harmful if swallowed, inhaled or absorbed through skin. Causes moderate eye injury (irritation). Avoid contact with skin, eyes or clothing. Avoid breathing spray mist. Use only in well ventilated areas. Wash thoroughly with soap and water after handling. Keep out of reach of children. If clothing is sprayed during application, remove clothing immediately after spraying and launder before wearing again. Do not apply to humans, their clothing or bedding. Do not allow children or pets to contact treated surfaces until spray has dried. Do not contaminate food or use on household pets. Cover fish tanks prior to application. Avoid contamination of food, feedstuffs, or water supply. Do not contaminate food preparation surfaces, kitchen utensils, dishes, or feed storage containers. All food contact surfaces and cooking utensils should be covered during treatment or thoroughly cleaned before using. Do not spray where electrical short circuits might result, such as wall outlets, conduits, etc.

**ENVIRONMENTAL HAZARDS**

This pesticide is highly toxic to birds, fish, and wildlife including waterfowl. Birds and waterfowl feeding or drinking on treated areas may be killed. Because of the migratory habits of Atlantic Coast waterfowl, do not apply this product to lawns in Nassau County, New York, between November 1 and May 20. Do not exceed maximum permitted label rates. Rates above those recommended significantly increase potential hazards to birds and waterfowl. Avoid overlapping of sprays. On lawns, if waterfowl (ducks or geese) can be expected in the treated area after treatment (except spot treatment), apply a minimum of 1/4" of water immediately after spraying this product. Stop watering before puddling occurs. Keep out of lakes, streams, ponds, tidal marshes, and estuaries. Do not apply directly to water, to areas where surface water is present or to intertidal areas below the mean high water mark. Drift and runoff may be hazardous to aquatic organisms in neighboring areas. Shrimp and crab may be killed at application rates recommended on this label. Do not apply where fish, shrimp, crab, and other aquatic life are important resources. Do not contaminate water when disposing of equipment washwaters.

This pesticide is highly toxic to bees exposed to direct treatment or residues on blooming crops or weeds. Do not apply this pesticide or allow it to drift to blooming crops or weeds if bees are visiting the treatment area.

Whitmire  
**TKO**™

**Microencapsulated Diazinon\***

**PT® 265**

**Residual Crack and Crevice® and Spot Treatment System**

**KILLS:** Ants, Boxelder Bugs, Carpenter Ants, Carpenter Bees, Carpet Beetles, Centipedes, Clover Mites, Cluster Flies, Cockroaches, Crickets, Dermestids; Earwigs, Elmleaf Beetles, Firebrats, Fleas, Flies, Flour Beetles, Millipedes, Psocids, Silverfish, Sowbugs, Spiders and Brown Dog Ticks.

**FOR USE IN, BUT NOT LIMITED TO:** Apartments, food storage areas, homes, hospitals, hotels, interiorscapes, meat packing and food processing plants, motels, nursing homes, restaurants and other food handling establishments, schools, supermarkets, transportation equipment (boats, buses, planes\*, ships, trailers, trains, trucks) utilities and other commercial buildings.

\* Do not use in aircraft cabins.

Outdoor uses are limited to around the home only. Not for use in USDA Meat and Poultry Plants.

**ACTIVE INGREDIENT:**

Diazinon\* ..... 23.0%

**OTHER INGREDIENTS:**

..... 77.0%

\*Diazinon is a Registered Trade Mark of Ciba-Geigy Corporation

**EPA Reg. No. 499-330 EPA Est. No. 499-MO-1  
KEEP OUT OF REACH OF CHILDREN  
CAUTION**

**FIRST AID**

**IF SWALLOWED:** Drink 1 or 2 glasses of water and induce vomiting by touching back of throat with finger or blunt object.

Do not induce vomiting or give anything by mouth to an unconscious person.

**IF ON SKIN:** Remove contaminated clothing immediately and wash skin with soap and water. Get medical attention.

**IF IN EYES:** Flush eyes with plenty of water. Call a physician if symptoms occur.

**NOTE TO PHYSICIAN:** The active ingredient in TKO™ PT® 265 is an organophosphate cholinesterase inhibitor. Atropine is antidotal only if symptoms of cholinesterase inhibition are present. 2-PAM is also antidotal and may be administered, but only in conjunction with atropine.

See page 4 for additional precautionary statements.

A Prescription Treatment® brand insecticide from:  
Whitmire Micro-Gen Research Laboratories, Inc.  
3568 Tree Court Industrial Blvd.  
St. Louis, MO 63122-6682  
www.wmmg.com  
© 1998 Whitmire Micro-Gen Research Laboratories, Inc.

**ACCEPTED  
with COMMENTS  
In EPA Letter Dated:  
AUG 1 2 1999**



**WHITMIRE MICRO-GEN  
RESEARCH LABORATORIES INC.  
800-777-8570**

Under the Federal Insecticide,  
Fungicide, and Rodenticide Act,  
as amended, for the pesticide  
registered under EPA Reg. No.

**499-330**

4 of 5



# TKO™ PT® 265 Microencapsulated Diazinon

## DIRECTIONS FOR USE

**IT IS A VIOLATION OF FEDERAL LAW TO USE THIS PRODUCT IN A MANNER INCONSISTENT WITH ITS LABELING.**

Do not use in aircraft cabins. Do not use this product in or on electrical equipment due to the possibility of shock hazard.

### GENERAL INFORMATION

TKO™ PT® 265 is a flowable capsule suspension concentrate containing 2.0 lb. of Diazinon per gallon. TKO™ PT® 265 may be sprayed on any surface which will not be damaged or stained by water. Heavy applications may leave a visible deposit. On some surfaces, this deposit can be removed with a damp cloth or sponge.

Do not apply water-based sprays of this product to conduits, motor housings, junctions and switch boxes or other electrical equipment because of possible shock hazard.

### MIXING INSTRUCTIONS

Thoroughly clean spray equipment before using TKO™ PT® 265. Shake concentrate well before diluting. When diluting, first add approximately one-half of the water to the spray tank and then add the proper amount of TKO™ PT® 265. Add the rest of the water and agitate the sprayer thoroughly. Agitate sprayer occasionally during use to ensure even coverage. Shake or re-agitate sprayer if spraying is interrupted or if dilution is left in sprayer overnight. If spray screens are used, they should be 50 mesh or larger.

## INDOOR USE

Do not use this product indoors as an overall surface spray or as a space spray; take care not to introduce this product into the air during application. Use only in well-ventilated areas. Do not apply where children are likely to frequently contact treated surface. Remove or cover fish bowls and remove pets before application. Do not treat pets with this product. Do not allow children or pets in treated areas until spray has dried. Do not apply this product in any rooms occupied by patients, the elderly or infirm. Do not apply to classrooms when in use. In institutions (including but not limited to office buildings, museums, libraries, and sports facilities), do not apply this product when occupants are present in the immediate area. Do not apply directly to conduits, motor housings or electrical switch boxes. Do not apply to areas, surfaces or utensils which will contact food or feed. Exposed food should be covered or removed during application. All food processing surfaces and utensils should be covered during application or thoroughly washed with an effective cleaning compound followed by a potable water rinse. If clothing is sprayed during application, remove clothing immediately after spraying, wash affected body areas with soap and water and launder clothing before wearing again.

Dilute TKO™ to 0.1%, 0.2%, 0.5% or 1.0% with water using the spray dilution chart.

### SPRAY DILUTION CHART

Amount of Finished spray	Spray Concentration			
	0.10%	0.20%	0.50%	1.00%
1 gallon	0.5 fl. oz.	1.0 fl. oz.	2.5 fl. oz.	5.0 fl. oz.
3 gallons	1.5 fl. oz.	3.0 fl. oz.	7.5 fl. oz.	15.0 fl. oz.
5 gallons	2.5 fl. oz.	5.0 fl. oz.	12.5 fl. oz.	25.0 fl. oz.
10 gallons	5.0 fl. oz.	10.0 fl. oz.	25.0 fl. oz.	50.0 fl. oz.

1 tablespoon = 0.5 fl. oz.

The higher rate should be used for clean-outs, for longer residual control or for high insect infestations. TKO™ PT® 265 should be used as a Crack and Crevice® residual product where insects may be hiding, living and breeding and/or for selected spot application.

### INDOOR USE - EXCEPT FOOD AND FEED HANDLING ESTABLISHMENTS

Includes, but is not limited to, Households, Apartments, and Non-Food Areas of Offices, Schools (except classrooms in use), Libraries, Hospitals (except patient rooms while occupied), Museums, and Sports Facilities. (See "Food and Feed Handling Establishments" for special directions when applying this product in food handling or serving areas in non-residential buildings.)

**Centipedes, Cockroaches, Crickets, Dermestids, Earwigs, Firebrats, Millipedes, Psocids, Silverfish, Sowbugs, Spiders:** Make spot treatment and/or Crack and Crevice® injections into hiding places such as cracks and crevices, void areas, moist areas, openings around pipes and sinks and under refrigerators. Repeat as necessary.

**Flies:** Make spot applications on surfaces where flies rest in the dark at night or frequent during the day, such as window frames, screens, trash cans, ceilings and upper wall surfaces.

**Carpet Beetles (Dermestids):** Thoroughly apply the spray as a spot treatment along edges of carpet, under carpet edge, furniture, beds, throw rugs and as a Crack and Crevice® application in closets and other shelving where infested items are stored. Do not treat clothing with this product. Repeat application as necessary.

**Fleas and Brown Dog Ticks:** Thoroughly apply the spray as a 1.0% fine spray to pet beds and resting quarters, adjacent cracks and crevices, baseboards, carpets and floor coverings, between and under cushions of upholstered furniture, and other areas where these pests may be present. Entire carpets may be treated. Applications to most surfaces should be as light as possible, approximately 2 quarts finished spray per 800 square feet. It may be necessary to use a higher volume of spray, approximately 3 to 4 quarts per 800 square feet, on long, dense shag carpets. Old bedding of pets should be replaced with clean, fresh bedding after treatment. Animals should not be sprayed with this product.

**Ants:** Inject cracks, crevices and voids where ants may be traveling and/or harboring, including but not limited to, around doors, window frames, and other structural cracks, crevices and voids. Spot treatment of trails and feeding areas may also be made.

**Hibernating stages of Boxelder bugs, Elmleaf beetles, cluster flies and clover mites:** Inject cracks, crevices and/or voids where these insects may be harboring or hibernating. Infested areas include, but are not limited to, cracks and crevices in weep holes, wall voids, around window and door frames, and under siding. Repeat application as necessary. Treat wall area around entry points on exterior where insects congregate.

**Carpenter Ants:** Make spot applications to any trails, around doors and windows, ceilings, wall voids, crawl spaces, and other places where ants enter premises. Where possible, treat ant nest or infested wood directly. Repeat application as necessary.

**Stored Product Pests (exposed stages of sawtoothed grain beetles, confused flour beetles, red flour beetles, rice weevils, grain weevils, warehouse beetles):** Make spot and/or Crack and Crevice® treatment of 0.5% to 1% TKO™ PT® 265 to localized areas including shelves, cupboards, walls and floors, where food products suspected of being infested are stored. Food should be removed or covered during treatment. Remove shelving paper before spraying. Do not replace food packages until spray has dried. Cover shelves with shelving paper. This treatment is supplemental to good housekeeping, since it will have no effect on insects breeding within packaging. Infested food packaging should be destroyed.

### INDOOR USE - FOOD AND FEED HANDLING ESTABLISHMENTS

Food and feed handling establishments are places other than private residences, in which food or feed is held, processed, prepared or served including restaurants, canteens, bakeries, and food processing plants. This product may be applied in the food/feed areas and the non-food/non-feed areas of these establishments. Apply either as a limited spot or Crack and Crevice® treatment as directed below.

### Food/Feed Areas of Food and Feed Handling Establishments

Food/Feed areas include areas for receiving, serving, storage, (dry, cold, frozen or raw), packaging (canning, bottling, and grinding); enclosed processing systems (mills, dairies, and systems for processing edible oils and syrups). APPLICATION OF THIS PRODUCT IN THE FOOD/FEED AREAS OF FOOD HANDLING ESTABLISHMENTS, OTHER THAN AS A CRACK AND CREVICE® TREATMENT OR LIMITED SPOT TREATMENT, IS NOT PERMITTED.

**Limited Spot Treatment:** Limit Spot Treatment to floor surface where pests have been seen or where they are suspected of hiding. Limit the sum of individual spot treatment to an area no larger than 20 percent of the floor surface area. Any individual spot treatment must not exceed 2 square feet. Do not apply to areas, surfaces, or utensils which will come in contact with food. Take extreme care to avoid contamination of food or food contact surfaces or introducing the material into the air.

**Crack & Crevice® Treatment:** Apply spray in small amounts directly into cracks and crevices using equipment capable of delivering a pin stream of insecticide. Applications may also be made into expansion joints, spaces between equipment and floors, and openings leading to voids and hollow spaces in walls, equipment legs and bases.

Do not use this product in conduits, motor housings, and electrical switch boxes.

### Non-Food Areas of Food and Feed Handling Establishments

Non-food areas include garbage rooms, lavatories, floor drains (to sewers), entries and vestibules, offices, locker rooms, machine rooms, boiler rooms, mop closets and storage (after canning or bottling).

**Spot Treatment:** Apply as a coarse low pressure fan spray to floor surface areas around water pipes, beneath cabinets, storage areas, and similar areas where cockroaches, ants, spiders, and silverfish hide.

### LIVESTOCK HOUSING

For use in and around livestock housing for control of flies in barns and animal sleeping quarters (except dairy barns, milk rooms and poultry houses.)

Apply a 1.0% TKO™ PT® 265 spray to ceilings and walls of livestock sheds, calf barns, hog barns, loading sheds, and other farm buildings except dairy barns, milkrooms and poultry houses. Areas where flies congregate, such as garbage dumps and corrals, should be sprayed thoroughly. Repeat applications as fly populations warrant.

Remove animals from buildings prior to treatment and keep animals out for at least 4 hours after treatment.

Do not contaminate milk, feed, drinking water, or apply to animals or poultry.

## USE ON ORNAMENTALS

**FOR USE ON, BUT NOT LIMITED TO:** African Violets, Agapanthus, Ageratum, Aluminum Plant, Alyssum, Arrowhead, Aster, Azalea, Begonia, Bird's Nest Fern, Blue Spruce, Boston Fern, Bottlebrush, Calceol, Calendula, Camellia, Camellions, Celosia Jewel Box, Chrysanthemum, Cockscomb, Coleus, Colesester, Crane Myrtle, Croton, Gaillardia, Dianthus, Dogwood, Dracaena, Dusty Miller, Dwarf Lilac, Escallonia, Eucalyptus, Flax Topped Sedum, Floss Flower, Friendship Plant, Gardenia, Gazania, Geranium, Gold Dust, Honeysuckle, Hydrangea, Ilex, Impatiens, Ivy, Jade Plant (Crassula), Japanese Arelia, Juniper, Leucodoe, Liriodendron, Liriodendron, Maranta, Mangold, Mock Orange, Mugho Pine, Nandina, Oleander, Orchid, Ornamental Evergreens, Osmanthus, Pachysandra, Periwinkle, Petunia, Pfizer Juniper, Phloxia, Pineapple Guava, Pfitosporum, Podocarpus, Primrose, Privet, Pyracantha, Raphanopsis, Rhododendron, Rose, Salvia, Sansevieria, Scarlet Sage, Snake Plant, Snapdragon, Soft Maple, Spider Plant, Star Jasmine, Strawflower, Swedish Ivy, Sweet Pea, Tahitian Bridal Veil, Velvet Plant (Gymura), Verbena, Wandering Jew, Wax Plant, Zinnia

TKO™ PT® 265 has demonstrated excellent plant safety; however, all varieties of the plants listed above have not been tested. When treating large numbers of plants of a single variety, spray a few plants and observe for phytotoxicity prior to full scale application.

## INTERIORSCAPES

**FOR CONTROL OF FUNGUS GNAT LARVAE, LEAFMINERS, MEALYBUGS, (CITRUS, STEM AND ROOT) AND SCALE INSECTS:** Use 0.5 to 1.0 fl. oz. per gallon (0.1 to 0.2% spray).

**FOR CONTROL OF APHIDS, MITES AND THRIPS:** Use 1.0 to 2.5 fl. oz. per gallon (0.2 to 0.5% spray).

Treat upper and lower foliage surfaces of plants uniformly. Treat when insects appear. Use higher rate for heavy insect infestations. Wet foliage thoroughly but avoid run-off. Repeat applications as necessary.

**FOR CONTROL OF FUNGUS GNAT LARVAE:** Mix at 1/2 or 1 ounce per gallon of water. Treat each pot so the top inch of soil in the pot is moistened. Do not drench.

## ORNAMENTALS - OUTDOORS

Use to control pests on ornamental plants around the home only. Do not use this product on outdoor ornamentals other than around the home. Wear long-sleeved shirt and long-legged pants when spraying. Spray with wind to your back. Do not spray on windy days. If clothing becomes wet from spray during use, remove clothing after spraying. Wash affected body areas thoroughly with soap and water and launder clothing before wearing again.

Apply TKO™ PT® 265 to the ornamentals listed at a rate of 0.5 to 1.0 fl. oz. per gallon of water (0.1 or 0.2% spray).

TKO™ PT® 265 may not control some organophosphate resistant ornamental plant pests.

## OUTDOOR USE

Use to control pests on outdoor surfaces and perimeters of buildings. Wear long-sleeved shirt and long-legged pants when spraying. Spray with wind to your back. Do not spray on windy days. If clothing becomes wet from spray during use, remove clothing after spraying. Wash affected body areas thoroughly with soap and water and launder clothing before wearing again.

TKO™ PT® 265 can be used as a residual spray on outdoor surfaces and/or as a crack, crevice and void treatment of buildings, porches, window frames, eaves, patios, garages, refuse dumps and other areas where pests congregate or enter premises. Repeat treatment as necessary to maintain effectiveness. Use the 0.5% or 1.0% rate. TKO™ PT® 265 can be used as a residual spray to control pests in outdoor void areas. Repeat treatment as necessary.

### PERIMETER TREATMENT

To help prevent infestations of buildings by the above pests, treat a band of soil 6 to 10 feet wide around and adjacent to the building. Also, treat the building foundation to a height of 2 to 3 feet where pests are active and may find entrance. TKO™ PT® 265 may be applied in compressed air equipment or power spray equipment. Apply as a coarse spray to thoroughly and uniformly wet the band area. A rate of 4 to 6 ounces of TKO™ PT® 265 per 1,000 square feet is desirable.

### APPLICATION TO HOME LAWNS

Apply as a coarse spray at a rate of 4-6 ounces TKO™ PT® 265 per 1,000 square feet of lawn in 3 gallons of water, or sufficient water for thorough coverage. For lawn chinch bugs, use higher rate for longer residual control and in lawns of dense growth. For digger wasps, apply at dusk when the wasps are not active. Spot spray anthills and runways and wasp ground nest openings. For grubs (such as Japanese beetle larvae, European chaffer, Southern chaffer), apply any time between late July and early October. For best grub control, water in thoroughly after application. Do not treat ornamentals at the lawn treatment rate.

### NUISANCE PESTS OUTSIDE THE HOME

**Flies:** Spray outside surfaces of screens, doors, window frames or wherever these insects enter. Also treat surfaces around light fixtures on porches, in garages, and other places where insects light or congregate. Repeat as necessary. Treat normal fly resting areas such as ceilings, upper corners of the area, around windows and doors, light fixtures and other surfaces. Spray inside and outside surfaces of dumpsters and other trash holding containers. Spray trash corrals and other trash storage areas. Spray so as to lightly moisten the target surface. For best results, begin treatments at the start of the fly season and repeat weekly during periods of heavy fly activity.

5 of 5