

Reg # 499-180  
 P.M. 17  
 p 1/4

# PT 1200 Resmethrin

Directed Spray Insecticide Aerosol Generator

Broad Spectrum Synthetic Pyrethrum  
 SPRAYS IN ANY POSITION

## DIRECTIONS FOR USE

It is a violation of Federal Law to use this product in a manner inconsistent with its labeling.

### INDOORS; GARDEN CENTERS & GREENHOUSES

For light infestations treat at five seconds per 100 square feet. For heavy infestations treat at ten seconds per 100 square feet.

Dosage based on 2 foot high plants. Lower or higher dosage should be given based on height of foliage. Move can in a fast sweeping motion to provide maximum coverage maintaining a distance of 18 to 24 inches away from foliage.

Spot Treatment: For individual plants and localized infestations. Spray light mist on upper and lower leaf surfaces at a distance of 18-24 inches away from foliage. Avoid wetting foliage with spray. Repeat application as necessary.

### FOR USE INDOORS ON, BUT NOT LIMITED TO:

African Violet, Ageratum, Aluminum Plant, Amaranths, Arrowhead Vine, Aster, Azalea, Baby's Tears, Begonia, Black-eyed Susan, Bridal Veil, Broadleaf Acacia, Browallia, Caenothus, Calendula, Camellia, Carnations, Christmas Cactus, Chrysanthemum, Coleus, Crassula, Cyclamen, Dahlia, Daisy, Daphne, Dieffenbachia, Dracaena, Dumbcane, Easter Lily, Fatsihedera, Ferns (Asparagus, Boston, Plumosa, Sword), Ficus, Friendship Plant, Fuchsia, Gardenia, Geranium, Gloxinia, Heliotrope, Hibiscus, Hoya, Ice Plant, Impatiens, Inch Plant, Ivy (English, German, Grape, Swedish), Jade, Marigold, Moses in Cradle, Nasturtium, Nephytis, Oxalis, Palms (Areca, Heathie Bella), Pansy, Peperomia, Petunia, Philodendron, Piggy-back Plant, Poinsettias, Prayer Plant, Primrose, Purple Wailles, Reiger Begonia, Roses, Rubber Plant, Salvia, Sedum, Shamrock, Snake Plant, Snapdragon, Spider Plant, Star of Bethlehem, Tahitian Bridal Veil, Verbena, Wandering Jew, Wax Begonia, Wax Plant, Zebra Plant and Zinnia.

**STORAGE AND DISPOSAL:** Do not contaminate water, food or feed by storage or disposal.

**STORAGE:** Store in a cool dry place away from heat or open flame.

**PESTICIDE DISPOSAL:** Pesticides that cannot be used according to label instructions must be disposed of according to applicable Federal, state or local procedures.

**CONTAINER DISPOSAL:** Replace cap and discard empty container in trash, sanitary landfill or by other approved state and local procedures. Do not incinerate or puncture.

## PRECAUTIONARY STATEMENTS HAZARDS TO HUMANS AND DOMESTIC ANIMALS

**CAUTION:** Harmful if swallowed, inhaled, or absorbed through skin. Avoid inhalation of spray mist. Wash thoroughly after using and before smoking or eating. Do not contaminate water, food, food stuffs or feed. Remove all pets. Cover fish tanks or remove. Do not remain in treated area and ventilate area after treatment is completed.

**NOTICE TO APPLICATOR:** When spraying large greenhouse ranges or when subject to extended inhalation exposure wear a pesticide respirator jointly approved by the Mining Enforcement and Safety Administration (formerly the U.S. Bureau of Mines) and by the National Institute for Occupational Safety and Health under the provisions of 30 CFR Part II.

**Environmental Hazards:** This product is toxic to fish. Keep out of lakes, streams or ponds. Do not contaminate water by cleaning of equipment or disposal of wastes. Apply this product only as specified on th's label.

**Physical or Chemical Hazards:** Contents under pressure. Do not use or store near heat or open flame. Do not puncture or incinerate container. Exposure to temperatures above 130°F may cause bursting.

**Special Notice:** Good greenhouse management must overrule the use of PT 1200 when any conditions might be created by lightly closing greenhouses that would harm plant foliage or flowers. Example: Creation of high temperatures or humidity conditions. Do not use PT 1200 in greenhouses with unvented or defective gas heating systems or when open combustion exists.

**Additional Warnings:** This product has demonstrated excellent plant safety; however, all varieties of the plants listed have not been tested. When treating large numbers of plants of a single variety, spray a few plants and observe for phytotoxicity prior to full scale application.

©Whitmire Research Laboratories, Inc.  
 St. Louis, MO 63122

DOT-E 7808

Whitmire

# PT 1200 Resmethrin

Directed Spray  
 Insecticide Aerosol Generator

FOR USE IN: Garden Centers & Greenhouses.

**KILLS:** Ants, Aphids, Armyworms, Beetles (Leaf Beetles, Mexican Bean Beetles, Weevils), Boxelder Bugs, Cankerworms, Caterpillars (Inchworms, Leafrollers, Rose Slugs), Centipedes, Citrus Insects, Cockroaches, Crickets, Firebrats, Fungus Gnats, Lacebugs, Leafhoppers, Mealy Bugs, Millipedes, Mosquitoes, Plant Bugs, Scales, Saw Bugs, Spider Mites, Spiders, Spittlebugs, Thrips and Whiteflies.

May be used on: Potted and Flowering Plants, Foliage, Bedding Plants, Cut Flowers and Ornamentals.

### Active Ingredients:

* Resmethrin-[5-(phenylmethyl)-3-furanyl] methyl	
2,2-dimethyl-3-(2-methyl-1-propenyl) cyclopropane	
carboxylate	1.00%
Inert Ingredients:	99.00%
	100.00%

\*Cis/trans isomers ratio: max 30% (+/-) cis and min 70 (+/-) trans

EPA Reg. No. 499-180 EPA Est. No. 499-MO-1

KEEP OUT OF REACH OF CHILDREN

## CAUTION

### STATEMENT OF PRACTICAL TREATMENT

**IF IN EYES:** Flush eyes with plenty of water. Get medical attention if irritation persists.  
**IF SWALLOWED:** Call a physician or Poison Control Center immediately. Gastric lavage may be indicated. DO NOT INDUCE VOMITING, vomiting may cause aspiration pneumonia.  
**IF ON SKIN:** Remove contaminated clothing and wash affected areas with soap and water.  
**IF INHALED:** Remove person to fresh air. Apply artificial respiration if indicated.

See side panel for additional precautionary statements.

NET WEIGHT: 2 LB.

JAN 1 1987

499-180

# PT 1200 Resmethrin

## Total Release Insecticide Aerosol Generator

### DIRECTIONS FOR USE

It is a violation of Federal Law to use this product in a manner inconsistent with its labeling.

**For Use Indoors:** (Ornamental and Flowering Plants):

**Greenhouse Preapplication Directions:** For best results, apply during early evening when foliage is dry and temperature is between 60°-85°F. Shut off all exhaust fans and close all windows, doors and ventilators. Keep greenhouse closed 2-4 hours, preferably overnight following treatment. All human occupants and pets should be removed before treatment. Building should be ventilated before reentry.

### TOTAL RELEASE DIRECTIONS

One 1 lb. unit covers 3,000 square feet.

Refer to Supplemental Label for total release application of the 1 lb. size.

### FOR USE INDOORS ON, BUT NOT LIMITED TO:

African Violet, Ageratum, Aluminum Plant, Amaranths, Arrowhead Vine, Aster, Azalea, Baby's Tears, Begonia, Black-eyed Susan, Bridal Veil, Broadleaf Acacia, Browallia, Caenothus, Calendula, Camellia, Carnations, Christmas Cactus, Chrysanthemum, Coleus, Crassula, Cyclamen, Dahlia, Daisy, Daphne, Dielfenbachia, Dracaena, Oumbcane, Easter Lily, Fatshedera, Ferns (Asparagus, Boston, Plumosa, Sword), Ficus, Friendship Plant, Fuchsia, Gardenia, Geranium, Gloxinia, Heliotrope, Hibiscus, Hoya, Ice Plant, Impatiens, Inch Plant, Ivy (English, German, Grape, Swedish), Jade, Marigold, Moses in Cradle, Nasturtium, Nephylis, Oxalis, Palms (Areca, Heathie Bella), Pansy, Peperomia, Petunia, Philodendron, Piggy-back Plant, Polinsettias, Prayer Plant, Primrose, Purple Wallfies, Reiger Begonia, Roses, Rubber Plant, Salvia, Sedum, Shamrock, Snake Plant, Snapdragon, Spider Plant, Star of Bethlehem, Tahitian Bridal Veil, Verbena, Wandering Jew, Wax Begonia, Wax Plant Zebra Plant and Zinnia.

**STORAGE AND DISPOSAL:** Do not contaminate water, food or feed by storage or disposal.

**STORAGE:** Store in a cool area away from heat or open flame.

**PESTICIDE DISPOSAL:** Pesticide that cannot be used according to label instructions must be disposed of according to applicable Federal, state or local procedures.

**CONTAINER DISPOSAL:** Replace cap and discard empty container in trash, sanitary landfill or by other approved state and local procedures. Do not incinerate or puncture.

### PRECAUTIONARY STATEMENTS HAZARDS TO HUMANS AND DOMESTIC ANIMALS

**CAUTION:** Harmful if swallowed, inhaled, or absorbed through skin. Avoid inhalation of spray mist. Wash thoroughly after using and before smoking or eating. Do not contaminate water, food, food stuffs or feed. Remove all pets. Cover fish tanks or remove. Do not remain in treated area and ventilate area after treatment is completed.

**NOTICE TO APPLICATOR:** When spraying large greenhouse ranges or when subject to extended inhalation exposure wear a pesticide respirator jointly approved by the Mining Enforcement and Safety Administration (formerly the U.S. Bureau of Mines) and by the National Institute for Occupational Safety and Health under the provisions of 30 CFR Part II.

**Environmental Hazards:** This product is toxic to fish. Keep out of lakes, streams or ponds. Do not contaminate water by cleaning of equipment or disposal of wastes. Apply this product only as specified on this label.

**Physical or Chemical Hazards:** Contents under pressure. Do not use or store near heat or open flame. Do not puncture or incinerate container. Exposure to temperatures above 130°F may cause bursting.

**Special Notice:** Good greenhouse management must overrule the use of PT 1200 when any conditions might be created by tightly closing greenhouses that would harm plant foliage or flowers. Example: Creation of high temperatures or humidity conditions. Do not use PT 1200 in greenhouses with unvented or defective gas heating systems or when open combustion exists.

**Additional Warnings:** Make sure spray is unobstructed above units by foliage or other physical objects in order to obtain maximum distribution of fog.

This product has demonstrated excellent plant safety; however, all varieties of the plants listed have not been tested. When treating large numbers of plants of a single variety, spray a few plants and observe for phytotoxicity prior to full scale application.

©WhitMira Research Laboratories, Inc.  
St. Louis, MO 63122

WhitMira

# PT 1200 Resmethrin

## Total Release Insecticide Aerosol Generator

FOR USE IN GARDEN CENTERS, GREENHOUSES.

**KILLS:** Ants, Aphids, Armyworms, Beetles (Leaf Beetles, Mexican Bean Beetles, Weevils), Boxelder Bugs, Cankerworms, Caterpillars (Inchworms, Leafrollers, Rose Slugs), Centipedes, Citrus Insects, Cockroaches, Crickets, Firebrats, Fungus Gnats, Lacebugs, Leafhoppers, Mealy Bugs, Millipedes, Mosquitoes, Plant Bugs, Scales, Sow Bugs, Spider Mites, Spiders, Spittlebugs, Thrips and Whiteflies.

May be used on: Potted and Flowering Plants, Foliage, Bedding Plants, Cut Flowers and Ornamentals.

### Active Ingredients:

*Resmethrin-[5-(phenylmethyl)-3-turanyl] methyl 2,2-dimethyl-3-(2-methyl-1-propenyl) cyclopropane carboxylate .....	1.00%
Inert Ingredients: .....	99.00%
	100.00%

\*Cis/trans isomers ratio: max 30% (+/-) cis and min. 70 (+/-) trans

EPA Reg. No. 499-180

EPA Est. No. 499-MO-1

KEEP OUT OF REACH OF CHILDREN

## CAUTION

### STATEMENT OF PRACTICAL TREATMENT

**IF IN EYES:** Flush eyes with plenty of water. Get medical attention if irritation persists.  
**IF SWALLOWED:** Call a physician or Poison Control Center immediately. Gastric lavage may be indicated. DO NOT INDUCE VOMITING, vomiting may cause aspiration pneumonia.  
**IF INHALED:** Remove person to fresh air. Apply artificial respiration if indicated.  
**IF ON SKIN:** Remove contaminated clothing and wash affected areas with soap and water.

See side panel for additional precautionary statements.

NET WEIGHT: 1 LB.

JAN 1 1987

499-180

# AEROSOL GENERATORS

Including Whitmire PT 1100, PT 1200, PT 1300 and PT 1400

## Pre-application Directions

Apply only after sunset when foliage is dry and temperature is between 70° and 80°F., because sunlight will degrade insecticides, reducing their effectiveness. Close all outside openings, windows, doors, and outside fresh air ventilators.

## Fan Circulation

Supplemental air circulation greatly increases the effectiveness of Whitmire's total release aerosol generators. If available, the use of your air circulating system is recommended. In greenhouses without air circulation systems, use large portable fans placed at one end greenhouse in an unobstructed aisle to achieve maximum air movement for spray particle recirculation. Turn on circulating fans prior to releasing spray.

## CAUTIONS

Reentry: Occupants should not reenter greenhouse until it has been ventilated. Good Greenhouse management must overrule the use of total release insecticide aerosol generators when any conditions might be created by tightly closing greenhouses that would harm plant foliage or flowers. Example - creation of high temperature or humidity conditions. Do not use units in greenhouses with unvented or defective gas heating systems or where open combustion exists.

## APPLICATION DIRECTIONS

### Dosage

Use one 16-oz. unit per 3,000 sq. ft.

Plants grown at ground level: Place container on ground between plant beds near middle of area to be treated.

Plants grown on benches: Place container on benches near middle of area to be treated. Make sure spray is unobstructed above unit by foliage or other physical objects in order to obtain maximum distribution of fog.

### To Activate Unit

Press tab down to locked position. Leave greenhouse at once. The entire contents will release automatically.

### Spray Exposure

Keep greenhouse tightly closed and fans operating overnight allowing insecticide to recirculate for maximum plant coverage. Important: If greenhouse is not kept tightly closed, air currents will transport insecticide particles outside and treatment may be ineffective.

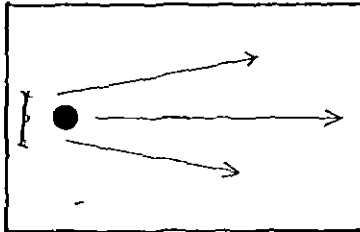
p. 4/14



# HOW TO USE TOTAL RELEASE AEROSOL GENERATORS FOR BEST RESULTS

## 1. GREENHOUSE...SINGLE FAN

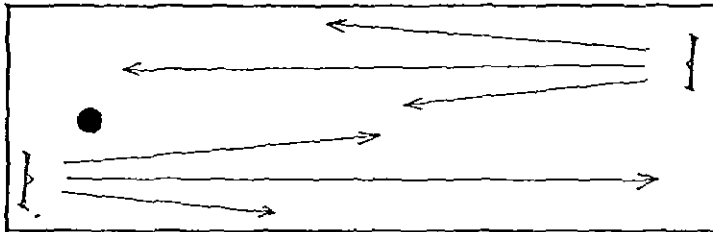
Size 50' x 60' (3000 Sq. ft.)



Air circulation is a necessity to distribute particles uniformly throughout the greenhouse. Air turbulence can be achieved with convection tube circulation, portable or any fixed power circulating system. In houses without powered circulating systems, use portable fans to maintain positive air movement and continuous circulation. Low velocity fans delivering 2,000 to 3,000 CFM are suitable. High velocity fans are not desirable. Double the number of fans if the foliage is dense. Place units and locate fans where the air flow is as unobstructed as possible to maximize particle circulation. Do not place unit inside or directly under tube or tube intake where tube circulation of air is used.

## 2. GREENHOUSE...FAN CIRCULATING SYSTEM

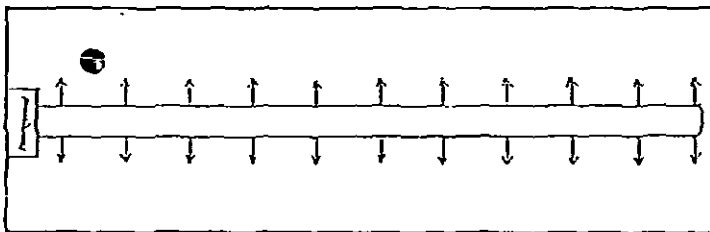
Size 30' x 100' (3000 Sq. ft.)



See Label for Use Directions and Cautions

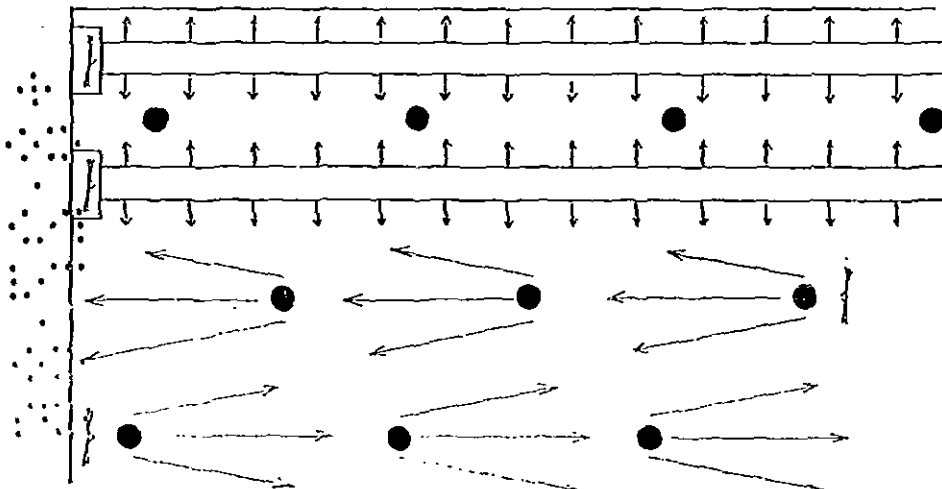
## 3. GREENHOUSE...TUBE CIRCULATING SYSTEM

Size 30' x 100' (3000 Sq. ft.)



## 4. LARGE GREENHOUSE...TUBE OR FAN CIRCULATING SYSTEM

Place 1 PT per 3000 Sq. ft. throughout Greenhouse



### LEGEND

