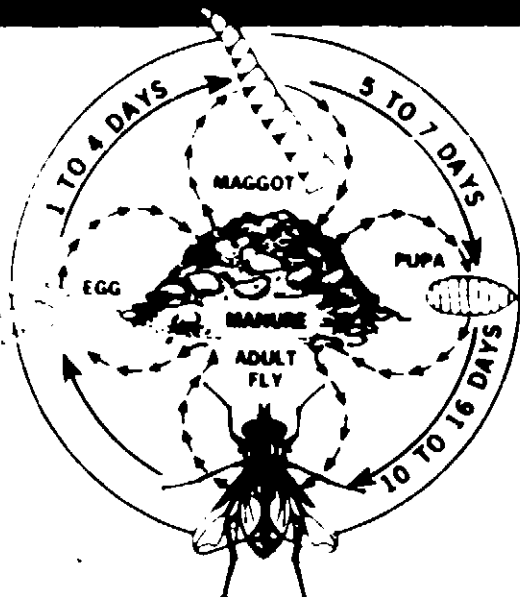


## BREAK THE FLY REPRODUCTION CYCLE



From the time flies lay eggs it requires approximately two weeks and four stages to hatch as adults:

1.-EGG 2.-MAGGOT 3.-PUPA 4.-ADULT  
FLYS-OFF LARVICIDE is the second step in a 3-step program to reduce fly population. During the two-week cycle, all three control steps shown below must be taken regularly for effective results.

### STEP 1 - SANITATION

Clean up all possible breeding locations weekly so the fly eggs and maggots do not have a chance to develop.

### STEP 2 - LARVICIDE

To kill the larvae before flies develop into egg-laying adults, apply weekly.

### STEP 3 - ADULTICIDE

Use FLYS-OFF AEROSOL and SETTLING MIST to kill adults and prevent their egg laying.

### CAUTIONS

- Keep out of reach of children.
- Harmful if swallowed or inhaled. Avoid contact with skin and eyes.
- Do not use, pour, spill, or store near heat or open flame.
- Do not mix with other insecticides.
- Do not use on animals—removes their hair.
- Do not reuse empty container. Destroy it by perforating or crushing. Bury or discard in a safe place.
- Avoid breathing of spray mist. Wash thoroughly after using.
- This product is toxic to fish. Keep out of lakes, streams, or ponds. Do not contaminate water by cleaning of equipment, or disposal of wastes.
- Mixture may burn or kill grass and shrubs.

PRODUCT #05-0300

Whitmire

CAUTION: Keep out of reach of children. See side panel for additional cautions.

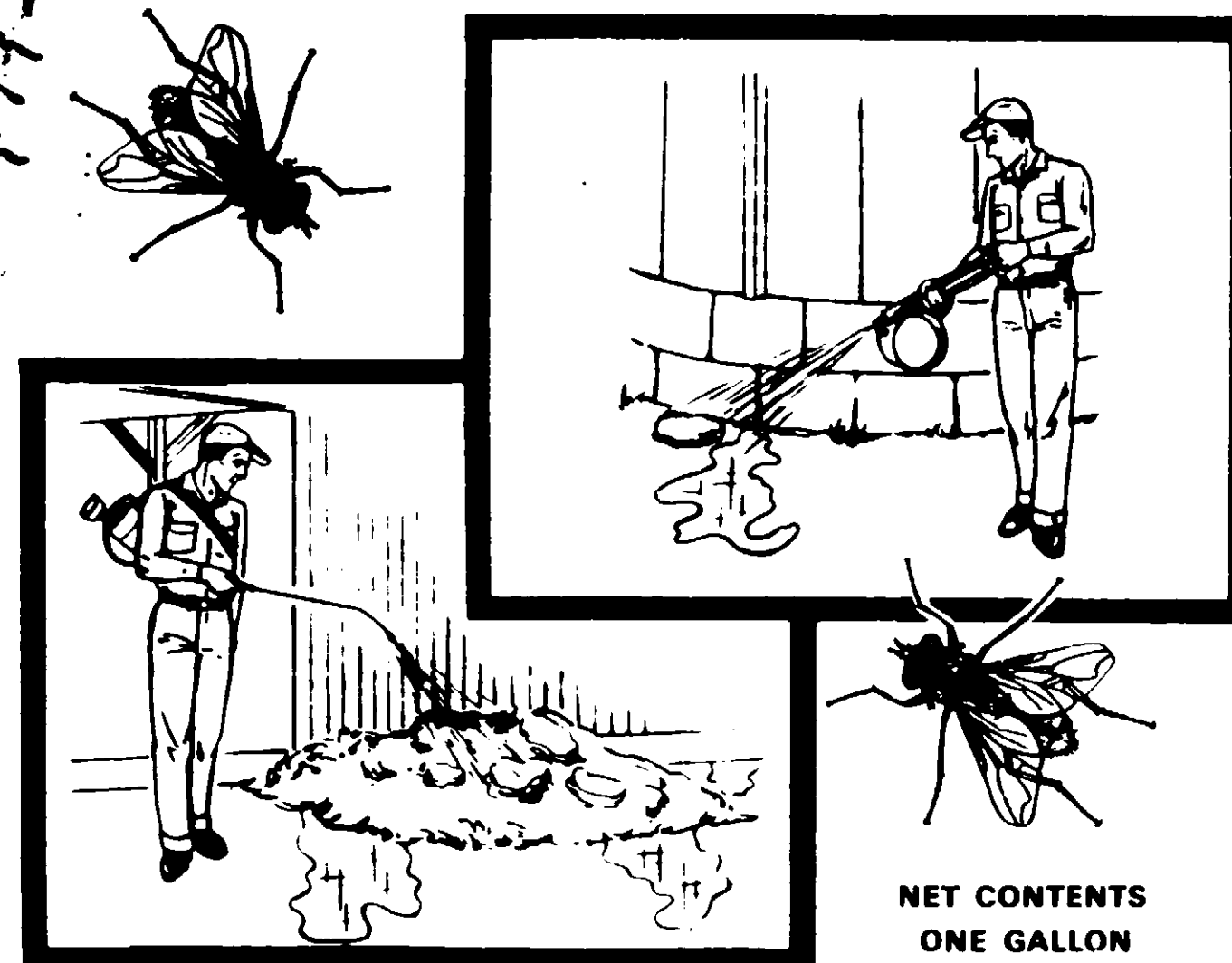
# FLYS-OFF

## LARVICIDE

### 3-WAY CONCENTRATE

For controlling Fly, Mosquito and Gnat larvae

MIXES WITH OIL, WATER AND GRANULES



NET CONTENTS  
ONE GALLON

### ACTIVE INGREDIENTS 100%

Rotenone*	30.00%	Disobutylphenoxy ethyl	1.00%
Cube Rotenoids and Extractives other than Rotenone*	70.00%	Carbaryl (1 Naphthyl N-Methylcarbamate)	1.00%
Citrus Oils	5.00%	Butoxypropylene Glycol	9.00%
Naphthalene	10.00%	Petroleum Distillate	62.00%
Alpha Pinene	5.00%		

\*Processed under Whitmire Rotenone pat. 2,267,385

E.P.A. No. 499-164

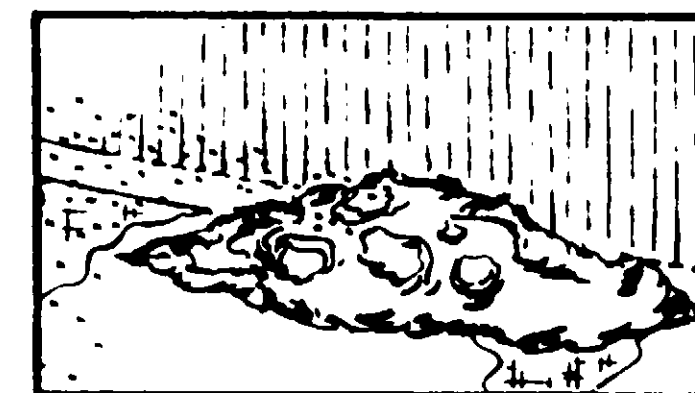
Whitmire

RESEARCH LABORATORIES, INC.

3568 Tree Court Industrial Blvd. • St. Louis, Mo. 63122

**SPECIAL NOTICE: Do not apply inside dairy barns.**

## KILL FLIES BEFORE THEY CAN BREED



### DIRECTIONS FOR MIXING

OIL MIX: 1 Quart to 5 gallons of fuel oil.

WATER MIX: 1 Quart to 2½ gallons of water

### DIRECTIONS FOR APPLICATION

Apply with pressure sprayer or sprinkling can at the rate of 1 gallon per 100 square feet.

First, clean up all manure accumulations, waste, silage food, rotten straw, hay, and remove weeds in and around milk house, barns, silo, etc.

**Fly Larvae:** Spray thoroughly all crevices around loafing barns and loafing areas. Also spray manure and other waste piles. Be sure to wet the base of all posts outside of cattle barns, animal houses, hog pens, garbage receptacles, around sewage disposal plants, dairy unloading structures, fruit packing sheds, and other areas where flies gather. Be sure all surfaces where maggots occur are sprayed until thoroughly wetted. Repeat weekly.

Do not use in food processing areas of food processing plants, restaurants, or other areas where food is commercially prepared or processed. Do not use in serving areas while food is exposed.

### INSTRUCTIONS FOR MIXING GRANULES

Mix 5 pounds Larvicide Concentrate with 60 pounds of fuel oil or similar oil in clean container. Spray this mixture on 35 pounds of Vermiculite 2 or 3 while it is being stirred in a fast-rotating mixer. Apply granules, by broadcasting, in same locations as suggested for oil and water mixes.

**CAUTION:** This larvicide is not to be used on animals or exposed foods.

FOR MOST EFFECTIVE RESULTS APPLY WEEKLY

LABEL #18-5300