

1000

498-156

143

=====
FRONT PANEL
=====

SPRAYPAK

**WASP KILLER
FORMULA 3**

This product can be used both indoors (attics and other places where nests are built) and outdoors on wasp, bee, hornet and yellow jacket nests.

SHOOTS A STREAM 20 FEET

DIELECTRIC BREAKDOWN VOLTAGE: 40.1 KV by ASTM Test Method D-877.

ACTIVE INGREDIENTS:

| | |
|---|----------|
| Tetramethrin [(1-Cyclohexene-1,2-dicarboximido) methyl 2,2-dimethyl -3-(2-methylpropenyl) cyclopropanecarboxylate]..... | 0.200% |
| 3-Phenoxybenzyl-(1RS, 3RS; 1RS, 3SR)-2,2-dimethyl-3-(2-methylprop-1-enyl) cyclopropanecarboxylate..... | 0.125% |
| *INERT INGREDIENTS:..... | 99.675% |
| Total | 100.000% |

*Contains Petroleum Distillate

EPA REG. NO. 498-156

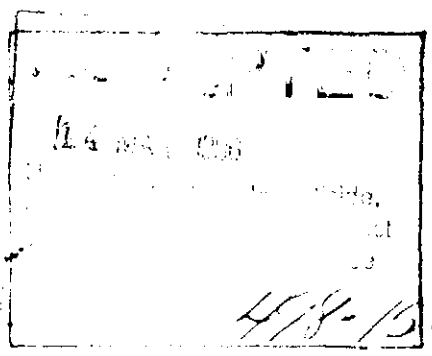
EPA EST. NO. 498-IL-1

Contains no CFCs or other ozone-depleting substances.
Federal regulations prohibit CFC propellants in aerosols.

NET WT. XX OZ. (X LB. XX OZ.) XXX g

**KEEP OUT OF REACH OF CHILDREN
CAUTION**

Read precautions on back of can.



BEST AVAILABLE COPY

=====
BACK PANEL
=====

**PRECAUTIONARY STATEMENTS
HAZARDS TO HUMANS AND DOMESTIC ANIMALS
CAUTION**

Harmful if swallowed. Contains Petroleum Distillate. Do not induce vomiting because of aspiration pneumonia hazard. Do not breathe vapor or spray mist. Causes slight eye irritation. Do not get in eyes. Avoid contact with skin and clothing. Wash contaminated skin promptly with soap and warm water. Avoid contamination of food and feedstuffs.

Do not use in commercial food-processing, preparation, food-storage or serving areas. In the home all food-processing surfaces and utensils should be covered during treatment or thoroughly washed before use. Exposed food should be covered or removed.

Remove pets and birds, and cover fish aquariums before spraying.

STATEMENT OF PRACTICAL TREATMENT

IF SWALLOWED: Call a physician or Poison Control Center immediately. Do not induce vomiting because of aspiration pneumonia hazard.

IF IN EYES: Flush with plenty of water. Get medical attention if irritation persists.

IF ON SKIN OR CLOTHING: Remove contaminated clothing and wash before reuse. Wash skin with soap and warm water. Get medical attention if irritation persists.

IF INHALED: Remove victim to fresh air. Apply artificial respiration if indicated.

ENVIRONMENTAL HAZARDS

This product is toxic to fish and other aquatic invertebrates. Do not apply directly to water. Do not contaminate water by cleaning of equipment or disposal of wastes.

PHYSICAL OR CHEMICAL HAZARDS

Extremely flammable. Contents under pressure. Keep away from heat, sparks and open flame. Do not puncture or incinerate container. Exposure to temperatures above 130°F may cause bursting.

DIRECTIONS FOR USE

It is a violation of Federal law to use this product in a manner inconsistent with its labeling.

FOR CONTROL OF WASPS, BEES, HORNETS AND YELLOW JACKETS: It is preferable to apply this product in the evening after all the insects have returned to the nest. Aim valve opening at the nest and depress button, continuing to spray until the nest is soaked with the spray. Repeat as necessary.

DO NOT USE THIS PRODUCT ON LIVING DECORATIVE TREES, SHRUBS OR ORNAMENTAL PLANTS.

When using indoors and outdoors, avoid wetting asphalt tile, rubber and plastic materials.

STORAGE AND DISPOSAL

STORAGE: Store in a cool, dry area away from heat or open flame.
DISPOSAL: Replace cap and discard container in trash. Do not incinerate or puncture.

CHASE PRODUCTS CO.
The Quality First Company®
P.O. Box 70 _ Maywood, IL 60153

=====
BOTTOM OF LABEL
=====