

### DIRECTIONS

#### FARM STORAGE BINS

Dosage: Grain temperatures should be above 60 degrees Fahrenheit. The following dosages of fumigant, when properly applied, may be expected to penetrate to the bottom of all ordinary farm bins.

#### FOR SMALL GRAINS

Bin Capacity	Fumigant Per 1000 Bushels
500 - 1500	4½ gallons
1500 - 3000	4 gallons
over 3000	3 gallons

#### FOR CORN

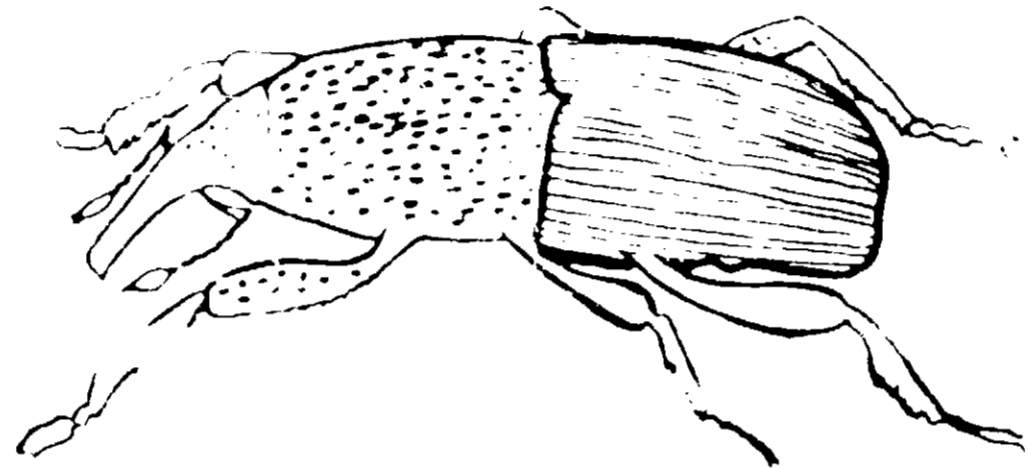
When treating corn, it is necessary to use higher rates of application as follows:

- 5 gallons per 1000 bushels in steel bins
- 6 gallons per 1000 bushels in wooden bins

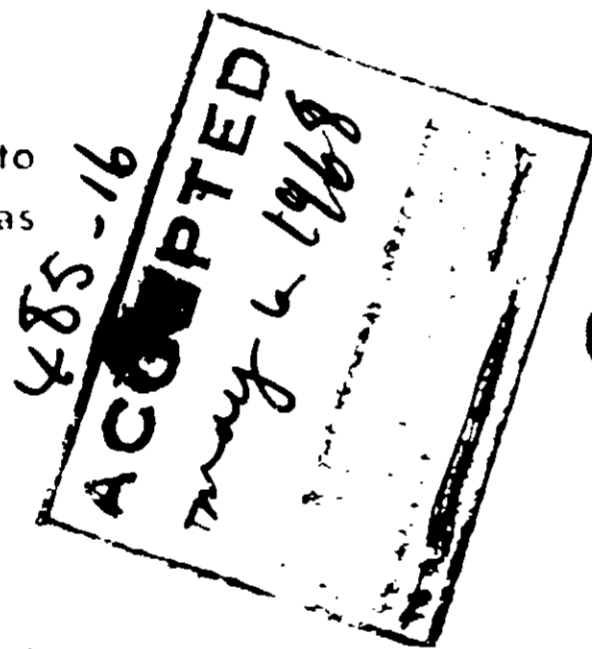
Application: It is very important and essential that the surface of the grain be leveled and also that all crusts or caked layers be broken up to insure even distribution and proper penetration of the fumigant. To avoid breathing the fumigant vapors, it should be applied from the outside of the bin. This may be done by spraying the fumigant evenly over the entire grain surface. A piece of 1/2 inch iron pipe without a nozzle may be used for this purpose. The bin should be made as tight as possible to prevent loss of the fumigant.

# INFUCO

## TWO-IN-ONE



## GRAIN FUMIGANT



ACTIVE INGREDIENTS	100%
Carbon tetrachloride	81.3%
Carbon bisulfide	12.1%
Ethylene dibromide	6.6%

### WARNING

KEEP OUT OF REACH OF CHILDREN

Caution: This fumigant is highly toxic. It should be used only by trained personnel. Do not breathe the vapors. Do not use in confined spaces. Do not use in the presence of open flames or sparks. Do not use in the presence of oxidizing agents. Do not use in the presence of acids or alkalis. Do not use in the presence of oil or grease. Do not use in the presence of lead or tin. Do not use in the presence of zinc or copper. Do not use in the presence of iron or steel. Do not use in the presence of aluminum or magnesium. Do not use in the presence of calcium or sodium. Do not use in the presence of potassium or lithium. Do not use in the presence of barium or strontium. Do not use in the presence of bismuth or antimony. Do not use in the presence of arsenic or selenium. Do not use in the presence of tellurium or molybdenum. Do not use in the presence of niobium or tantalum. Do not use in the presence of tin or lead. Do not use in the presence of bismuth or antimony. Do not use in the presence of arsenic or selenium. Do not use in the presence of tellurium or molybdenum. Do not use in the presence of niobium or tantalum. Do not use in the presence of tin or lead.

SEE FEATURES FOR

### DIRECTIONS

**FARM STORAGE APPLICATION:** Large farm storage bins should be treated with this fumigant as soon as possible after harvest. The fumigant should be applied at the rate of 3 to 4 gallons per 1000 bushels of grain. Make application from the outside of the building if at all possible. If it is necessary to enter the building for application a gas mask suitable for protection of the operator must be used.

### DOSAGE

When treating small grains in this type storage, a dosage of from 3 to 4 gallons of fumigant per 1000 bushels should be used. When treating corn in this type of storage, a dosage of from 4 to 5 gallons of fumigant per 1000 bushels should be used.

### DIRECTIONS

#### LARGE GRAIN ELEVATORS

Dosage: It is recommended that the fumigant be applied at the rate of 1 to 2 gallons per 1000 bushels of grain, except for the first and last 500 bushels, entered or discharged, where 1½ to 2 gallons per 1000 bushels should be applied. The fumigant should be applied evenly over the entire surface of the grain. Make application from the outside of the building if at all possible. If it is necessary to enter the building for application a gas mask suitable for protection of the operator must be used.

THE INDUSTRIAL FUMIGANT COMPANY  
KANSAS CITY, MISSOURI

NET CONTENTS: 5 GALLONS

## THE INDUSTRIAL FUMIGANT COMPANY

KANSAS CITY, MISSOURI