

**REAL-  
KILL**

# Automatic Indoor Fogger



**works while you're away**

NET WT. 8 OZ.

**WARNING: KEEP OUT OF REACH OF CHILDREN**  
Contents under pressure. Read cautions and directions on back before using.

**REAL-  
KILL**

## Automatic Indoor Fogger

**KILLS A VARIETY OF CRAWLING AND FLYING BUGS AS LISTED BELOW. LEAVES ROOM SMELLING FRESH.**

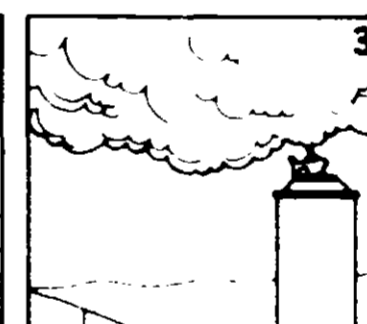
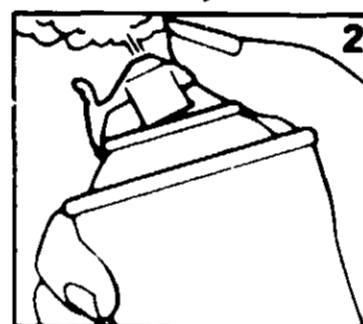
**KILLS these exposed insects: Roaches, Waterbugs, Spiders, Silverfish, Adult Fleas, Small Flying Moths, Hornets, Wasps, Flies, Mosquitos, Crickets, Gnats.**

One can treats up to 6,000 cubic feet (equivalent to 20' x 30' with 10' ceiling) including attics, basements, garages, storage areas, and cabins. Used as directed, Real-Kill will not harm drapes, upholstery fabrics, carpeting, bedspreads, clothing, linens, furniture, walls, floor tiles (rubber, vinyl), ceilings, shades or blinds.

**PREPARATION:** CLOSE outside doors and windows; turn off fans and air conditioners; extinguish open flames. OPEN cupboards, closets, and interior doors in area to be treated. REMOVE pets, birds, and cover or remove fish aquariums; remove or cover foods, dishes, utensils and food handling equipment. COVER asphalt tile, waxed wood floors and waxed furniture which may come in contact with the spray. (Newspapers may be used for all covering.)

**DIRECTIONS:** 1. Set the can on a raised table or stand. Spread paper under can to protect area directly beneath nozzle. Remove cover and

tilt top of can away from face. 2. Place thumb over arrow and press forward until latch hooks securely over top rim of can. (Illustration). 3. Set can back on paper and



leave room. (Illustration) 4. Keep area closed for 4 hours. Then, open doors and windows and let room air 30 minutes.

**CAUTION:** Keep out of reach of children. Harmful if swallowed, inhaled or absorbed through skin. Avoid breathing mist or contact with skin. In case of contact, wash with soap and water.

Vacate premises during treatment; ventilate once treatment is completed. Foods should be removed or covered during treatment. Food processing surfaces should also be covered or cleaned before using. When used in these areas apply only when the facility is not in operation.

**WARNING:** Contents under pressure. Do not puncture. Do not use or store near heat or open flame. Exposure to temperatures above 120 F may cause bursting. Never throw container into fire or incinerator.

**ACTIVE INGREDIENTS:** Pyrethrins, 0.30%; n-octyl sulfoxide of isosafrole, 1.32%; related compounds, 0.18%; 2,2-dichlorovinyl dimethyl phosphate, 0.28%; related compounds, 0.02%; petroleum distillate, 12.37%.

**INERT INGREDIENTS:**  
85.53%

© Copyright 1974

**REALEX CORPORATION  
BOX 78, KANSAS CITY,  
MISSOURI 64141**

**EPA Reg.  
No. 478-89-AA**

**EPA Est. 478-LA-1 480-A**

