



Handwritten notes:
476-2219
EPA 476-2219

476-2219
EPA 476-2219



Reward™

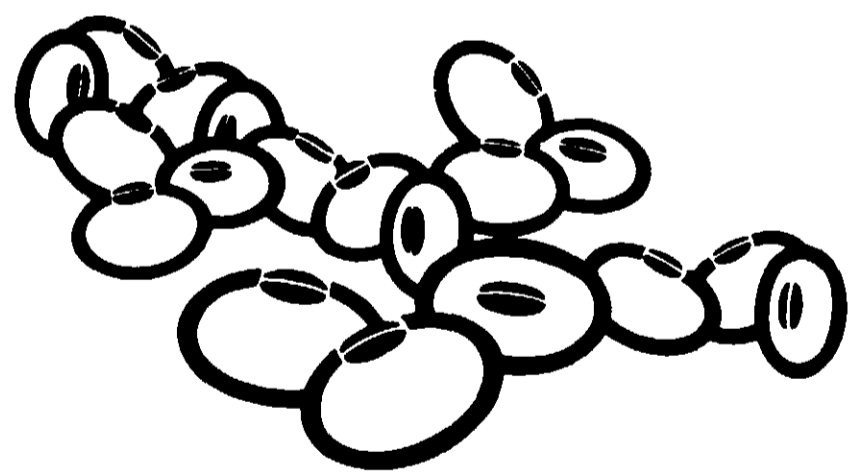
Selective Herbicide

Active ingredient:	
S-Propyl dipropylthiocarbamate	74.1%
Inert ingredients:	25.9%
	100.0%

liquid herbicide for weed control in soybeans

Keep Out Of Reach Of Children
CAUTION
Harmful If Swallowed

See next panel for additional precautionary statements and statement of practical treatment.



2.5 GAL. NET 9.45L

2.5 GAL. NET 9.45L

USE IN SOYBEANS



Statement of Treatment

If swallowed:
If inhaled:
If eye contact:
If skin contact:

Precaution

Hazards to Humans and Domestic Animals
CAUTION
Harmful if swallowed
Chemical and Physical Hazards to the Environment

4/16-19
Heavy Rain

M



Reward

Selective Herbicide



Statement of Practical Treatment

liquid herbicide for weed control in soybeans

Crops Protect

Soybeans

For information on the use of this product, see the label. The label contains important information about the safe and effective use of this product. It is the user's responsibility to read and understand the label before using this product.

If swallowed:

Do not induce vomiting. Drink plenty of water. If symptoms persist, seek medical attention. Do not eat, drink, or smoke while using this product.

For eye contact:

Rinse eyes with water for at least 15 minutes. Seek medical attention if irritation persists.

For skin contact:

Wash skin with soap and water. Remove contaminated clothing. Do not use solvents to clean skin.

If inhaled:

Move to fresh air. If symptoms persist, seek medical attention.



Storage and Disposal

Prohibitions:

Do not contaminate water or seeds by storage.

Storage:

Keep container tight. Use. Can be stored at room temperature.

Pesticide Disposal:

Rinse spray equipment. Do not reuse. This product is not for sale at a disposal facility.

Container Disposal:

Rinse for reuse. Do not reuse. Do not burn. Dispose of in a sanitary manner. Do not reuse. Do not burn.

Precautionary Statements

Hazards to Humans and Domestic Animals

CAUTION

Harmful if swallowed.

Chemical and Physical Hazards

Environmental Hazards



476 2019



Reward

Selective Herbicide

Crops Protected	Target Weeds	Important
	<p>Annual grasses Annual broadleaf weeds Perennial grasses Perennial broadleaf weeds Annual dicotyledonous weeds Annual monocotyledonous weeds Annual and perennial weeds</p>	<p>Read and follow directions on label for use. Do not apply to crops or plants listed on label as susceptible. Do not apply to crops or plants listed on label as sensitive.</p>

Storage and Disposal	Notice—Read Carefully
<p>Prohibitions: Do not contaminate water, food, feed, fertilizer or seeds by storage or disposal.</p> <p>Storage: Keep container tightly closed when not in use. Can be stored at temperature as low as minus 50 F.</p> <p>Pesticide Disposal: Rinse spray equipment. Wastes resulting from the use of this product may be disposed of on site or at an approved waste disposal facility.</p> <p>Container Disposal: Triple rinse (or equivalent) then offer for recycling or reconditioning, or puncture and dispose of in a sanitary landfill, or incinerator, or, if allowed by state and local authorities, by other approved means. Do not reuse.</p>	<p>Conditions of Sale: Stauffer and its affiliates, this product for sale, direct to end buyer and all users are deemed to have accepted the following conditions of sale and warranty without further warranty, written agreement of a duly authorized representative of Stauffer.</p> <p>Warranty Limitation: Stauffer warrants that this product conforms to the chemical description on the label and is reasonably fit for the purposes referred to in the directions for use on the label, subject to the inherent risks referred to below. Stauffer makes no other express warranties.</p> <p>THERE IS NO IMPLIED WARRANTY OF MERCHANTABILITY and there are no warranties which extend beyond the description on the label hereof.</p>

This product is sold only for uses stated on label. No express or implied license is granted to use or sell this product under any patent in any country except as specified on label. Stauffer Chemical Company, Patent No. 4,024,004 and 4,024,005. Other Patents Pending.

Made in U.S.A. by
Stauffer Chemical Company
 Westport, CT 06881-0850

© 1988 Stauffer Chemical Company

AT 108

Reward
Selective Herbicide

liquid herbicide for
weed control in soybeans



Complete Directions For Use,
Use Precautions and Recommendations

Made in U.S.A. by
STAUFFER CHEMICAL COMPANY, Westport, CT 06881-0650
EPA Reg. No. 476-0213

NOTICE—READ CAREFULLY

CONDITIONS OF SALE

This product is sold under the conditions stated on the label. No express or implied warranty is granted to use or sell this product under any patent in any country except as specified. Country: United States of America. Patent No. 4,094,001; 4,094,410. Other Patents Pending.

WARRANTY LIMITATION

The manufacturer of this product is not liable for special, indirect or consequential damages resulting from the use or handling of this product and no claims of any kind shall be greater in amount than the purchase price of the product here specified, when such damages are claimed.

INHERENT RISKS

The use of this product is subject to the inherent risks associated with the use of herbicides. Buyer assumes all responsibility for the use or application of this product contrary to the manufacturer's instructions resulting from adverse or unusual weather conditions.

LIMITATION OF LIABILITY

In no case shall Stauffer Chemical Company be liable for special, indirect or consequential damages resulting from the use or handling of this product and no claims of any kind shall be greater in amount than the purchase price of the product here specified, when such damages are claimed.

This product is sold under the conditions stated on its label. No express or implied warranty is granted to use or sell this product under any patent in any country except as specified. Country: United States of America. Patent No. 4,094,001; 4,094,410. Other Patents Pending.

EPA Reg. No. 476-0213

WT 184

6 F...
2...
100

Keep Out of Reach of Children

CAUTION

HARMFUL IF SWALLOWED
STATEMENT OF PRACTICAL TREATMENT

If a harmful exposure occurs or is suspected immediately initiate the recommended procedure. If further treatment is required contact a poison center, a physician or the nearest hospital.

If swallowed: Immediately give several glasses of water but *do not* induce vomiting. If vomiting does occur, give *no* more. Have a physician determine if condition of patient will permit evacuation of stomach. Do not give anything by mouth to an unconscious person.

For eye contact: Hold eyelids apart and flush for at least 15 minutes. Get medical attention immediately.

For skin contact: Immediately flush all affected areas with plenty of water for at least 15 minutes. Remove contaminated clothing and shoes. Seek medical attention if skin irritation occurs. Wash clothing before reuse.

If inhaled: Remove to fresh air. Seek medical attention if respiratory irritation occurs or if breathing becomes difficult.

CONTENTS

416-2213

Statement of Practical Treatment	2
Precautionary Statements	3
Weeds Controlled by REWARD	3
General Use Precautions	5
Directions for Use of REWARD	5
Sequential Applications	11
Tank Mixtures of REWARD with other herbicides	11
REWARD/TRENTINOL/TANK MIXTURE	11
Directions	11
REWARD/AMINOPYR/TANK MIXTURE	14
REWARD/BASALIN/TANK MIXTURE	14
Directions	14
REWARD/LASOL/4-EP/TANK MIXTURE	17
Directions	17
REWARD/PINACOL/4-EP/TANK MIXTURE	18
Directions	18
Appendix	
Procedure For Testing the Control of Weeds by REWARD	
REWARD Control of Weeds in Soybean Fields	19
Application	
REWARD and REWARD/TRENTINOL	21
Preparation of Tank Mixtures	21
Storage of Containers	24
TRADE NAMES	
AMINOPYR	25
BASALIN	25
LASOL	25
PINACOL	25
TRENTINOL	25
4-EP	25

PRECAUTIONARY STATEMENTS

HAZARDS TO HUMANS AND DOMESTIC ANIMALS

CAUTION

Harmful if swallowed. Avoid contact with skin, eyes and clothing. Avoid inhalation of spray mist. Wear rubber gloves, goggles and protective clothing. Wash with soap and water immediately after use or contact. Do not eat, drink, use food and feed. Keep away from heat and flame.

CHEMICAL AND PHYSICAL HAZARDS—Keep away from heat and flame.

ENVIRONMENTAL HAZARDS—Do not apply directly to water. Do not contaminate water by cleaning of equipment or disposal of wastes.

In case of emergency call (day or night) Chem-Tel, 800-424-9313, or Stauffer Chemical Company, 203-266-0601.

WEEDS CONTROLLED BY REWARD

REWARD will not control established weeds.

Annual Grasses:

- Barbentol (Setaria)
- Wheatgrass (Triticum)
- Crabgrass (Digitaria)
- Fingerhemp (Digitaria)
- Field bindweed (Convolvulus)
- Green foxtail (Setaria)
- Crabgrass (Digitaria)
- Green foxtail (Setaria)
- Green foxtail (Setaria)
- Johnsongrass seedling (Sorghum)

11/1 2/17

Annual Broadleaf Weeds

- Carpetweed (*Peltanaceae*)
- Cassia (*Cassia*)
- Field bindweed (*Convolvulaceae*)
- Flourish (*Convolvulaceae*)
- Purslane (*Portulacaceae*)
- Redroot pigweed (*Amaranthaceae*)
- Scragged cottonweed (*Cassia*)
- Shiny pigweed (*Amaranthaceae*)
- Vegetable-buttoneed (*Convolvulaceae*)

The above listed broadleaf weeds will be controlled only if treatment is made when conditions are favorable for weed seed germination and growth.

Annual Grasses:

- Yellow nutsedge - nutgrass (*Cyperus rotundus*)
- Yellow nutsedge - nutgrass (*Cyperus esculentus*)

Existing stands of nutgrass must be turned under and chopped up thoroughly before treatment for nutgrass control. REWARD must be thoroughly mixed into the soil prior to planting or applied subsurface to the soil with injectors or sweeps. Cultivation is suggested in addition to REWARD treatment in fields with moderate to heavy nutgrass infestations.

GENERAL USE PRECAUTIONS

- Read entire label before using.
- REWARD should be used only for recommended purposes and at recommended rates (do not over-apply).
- Failure to follow label instructions or use of rates not specifically listed on the label may result in crop injury or destruction.
- Applied according to directions and under normal growing conditions, REWARD will not harm the treated crop. Malformation of the primary leaves is not unusual. This condition is only temporary and will not affect yields. During germination and early stages of growth, extended periods of unusually cold and wet or hot and dry weather, insect or plant disease attack, the use of certain soil-applied systemic insecticides, or improperly placed fertilizers or soil insecticides may create abnormal conditions that weaken crop seedlings. REWARD used under these abnormal conditions could result in crop injury.
- REWARD is recommended for use on soybeans only.
- Do not tank mix REWARD with herbicides or fungicides.
- Do not contaminate irrigation water or water used for domestic purposes. Irrigation tanks do not apply REWARD before pre-irrigation.

DIRECTIONS FOR USE OF REWARD

IT IS A VIOLATION OF FEDERAL LAW TO USE THIS PRODUCT IN A MANNER INCONSISTENT WITH ITS LABELING.

APPLICATION DIRECTIONS

For control of weeds in soybean fields, apply REWARD to the soil in the row or between rows of soybeans. Apply REWARD to the soil in the row or between rows of soybeans. Apply REWARD to the soil in the row or between rows of soybeans. Apply REWARD to the soil in the row or between rows of soybeans.

FLUID FERTILIZER STATEMENT

REWARD may be combined with fluid fertilizer or suspension fertilizers. However, physical compatibility with the selected fertilizer must be determined before combining in the spray tank. See Appendix I for directions regarding these combinations.

DRY FERTILIZER STATEMENT

REWARD may be preapplied on many dry bulk fertilizers or granular fertilizers. However, uniform distribution on soybeans is recommended. REWARD on fertilizer should be applied uniformly. Directions are necessary to assure good results. See Appendix I for information and directions for preapplication.

INCORPORATION DIRECTIONS

REWARD may be incorporated into the soil by any method which will provide adequate soil coverage. However, the most effective method is by using a sweep or injector.

SOIL MIXING (INCORPORATION) BEFORE PLANTING: Use a sweep or injector to apply REWARD to the soil in the row or between rows of soybeans. Apply REWARD to the soil in the row or between rows of soybeans. Apply REWARD to the soil in the row or between rows of soybeans.

NOTE: When applying REWARD to the soil in the row or between rows of soybeans, apply REWARD to the soil in the row or between rows of soybeans.

SOIL MIXING (INCORPORATION) AFTER PLANTING: Use a sweep or injector to apply REWARD to the soil in the row or between rows of soybeans. Apply REWARD to the soil in the row or between rows of soybeans. Apply REWARD to the soil in the row or between rows of soybeans.

SUBSURFACE APPLICATION BEFORE OR AT PLANTING: Special equipment is required for subsurface application. MUST be used. Directions must be followed. See Appendix I for directions. See Appendix I for directions. See Appendix I for directions.

Soil Injection

REWARD may be applied to the soil in the row or between rows of soybeans by using a sweep or injector. Apply REWARD to the soil in the row or between rows of soybeans. Apply REWARD to the soil in the row or between rows of soybeans. Apply REWARD to the soil in the row or between rows of soybeans.

(c) Covered Sweeps: Set the sweep at least 10 inches below the soil surface. Control by measuring the spray band width at the banked end of the sweep, not the sweep itself. For BROADCAST APPLICATIONS, set the sweeps on double tool bars so that they overlap sufficiently to allow spray bands to meet.

NOTE: When applying REWARD to the soil in the row or between rows of soybeans, apply REWARD to the soil in the row or between rows of soybeans.

PLANTING

Do not plant seed deeper than 2 inches. For REWARD application made before planting, seeding can be done immediately or it may be delayed up to 10 days. If it is necessary to work the soil following application and incorporation, but before planting do not work the soil deeper than the depth the herbicide was incorporated. To avoid removing REWARD from the row (with loss of weed control in the row) do not move or shape soil after treatment, such as by planting in deep furrows.

SOYBEAN RECOMMENDATIONS

These recommendations are given in terms of

broadcast (overall) rates of REWARD per acre. For band or row application, reduce broadcast rates proportionately depending upon the row width to be treated and row spacing.

The following recommendations are for soybeans grown in all areas except in the Southeastern States.

REWARD may be applied before planting or planting or immediately after planting. When applying at or after planting, care must be taken not to disturb the crop seed or seedlings. Use 2.5 pints on coarse textured (sandy, light) soils, 3 pints on medium to fine textured (sandy, loam, clay, loam - medium to heavy) soils, 4 pints on very fine textured (clay - very heavy) soils.

For soybeans grown in the Southeastern States including North Carolina, South Carolina, Georgia, Alabama, Florida and Eastern Tennessee (Tenn. River East):

REWARD may be applied before planting or planting or immediately after planting. For broadcast applications made before planting, do not plant in deep furrows or use shank or disk device ahead of planter which brings up soil to the surface. For furrow planted soybeans, apply REWARD at or immediately after planting in bands over the row and incorporate with a wheel or only. When applying at or after planting, care must be taken not to disturb the crop seed or seedlings. Use 2.5 pints on coarse textured (sandy, light) soils, 3 pints on medium to fine textured (sandy, loam to clay, loam, loam - medium to heavy) soils.

NOTE: When applying REWARD to the soil in the row or between rows of soybeans, apply REWARD to the soil in the row or between rows of soybeans.

416 2219

Perennial Grasses

APPLICATION DIRECTIONS

Read and follow all directions on the product label. Do not use this product on crops. REWARD LASSO 4-EC herbicide contains a pre-emergent herbicide. Do not contain any water-soluble fertilizer or other nutrients.

Application Rates

Soil Texture	Broadcast Rates/Acre	
	REWARD	BASALIN 4-E
Coarse (silt & sand) (1-5)	2 pints	1 pint
Medium (silt & sand) (6-8)	2 pints	1 pint

For mix tank spray equipment, soil incorporation and planting directions, refer to the directions at the end of the REWARD tank mix on soybeans section of this label.

REWARD/LASSO* 4-EC TANK MIX DIRECTIONS

How to use REWARD/LASSO 4-EC tank mix on soybeans. For a detailed control on soybeans.

A tank mix combination of REWARD/LASSO 4-EC herbicide and BASALIN 4-E herbicide is a pre-emergent herbicide for control of weeds in soybeans. It is effective against the most troublesome weeds in North Central states of Michigan, Indiana and Ohio. Do not use this tank mix on any soybeans where it may occur.

The combination will provide better weed control than either herbicide alone.

WEEDS CONTROLLED:

Annual Grasses	Annual Broadleaves
Barnyardgrass	Carpetweed
Watergrass	Florida pusley
Crabgrass	Lamb's quarters
Fallopium	Common
Field bindweed	Morningglory, hairy
Green yellow	Perennial
Conyza	Smartweed
Johnsongrass	Spotted spurge
Sheep sorrel	Smooth
	Purslane
	Redtop
	Spotted spurge

Perennial Grasses

Purple top

Yellow top

APPLICATION DIRECTIONS

Application Rates

Soil Texture	Broadcast Rates/Acre	
	REWARD	PROWL
Coarse (silt & sand) (1-5)	2 pints	1 pint
Medium (silt & sand) (6-8)	2 pints	1 pint

Read and follow all directions on the product label. Do not use this product on crops. REWARD PROWL 4-E herbicide contains a pre-emergent herbicide. Do not contain any water-soluble fertilizer or other nutrients.

REWARD/PROWL* 4-E TANK MIX DIRECTIONS

How to use REWARD/PROWL 4-E tank mix for weed control on soybeans.

A tank mix combination of REWARD/PROWL 4-E herbicide and BASALIN 4-E herbicide is a pre-emergent herbicide for control of weeds in soybeans. It is effective against the most troublesome weeds in North Central states of Michigan, Indiana and Ohio. Do not use this tank mix on any soybeans where it may occur.

The combination will provide better weed control than either herbicide alone.

For thorough incorporation, use the following equipment:

WEEDS CONTROLLED

Annual Grasses	Annual Broadleaves
Barnyardgrass	Carpetweed
Watergrass	Florida pusley
Crabgrass	Lamb's quarters
Fallopium	Common
Field bindweed	Morningglory, hairy
Green yellow	Perennial
Conyza	Smartweed
Johnsongrass	Spotted spurge
Sheep sorrel	Smooth
	Purslane
	Redtop
	Spotted spurge

Perennial Grasses

Purple top

Yellow top

APPLICATION DIRECTIONS

Read and follow all directions on the product label. Do not use this product on crops. REWARD PROWL 4-E herbicide contains a pre-emergent herbicide. Do not contain any water-soluble fertilizer or other nutrients.

Application Rates:

Soil Texture	Broadcast Rates/Acre	
	REWARD	PROWL
Coarse (silt & sand) (1-5)	2 pints	1 pint
Medium (silt & sand) (6-8)	2 pints	1 pint

For mix tank spray equipment, soil incorporation and planting directions, refer to the directions at the end of the REWARD tank mix on soybeans section of this label.

HOW TO USE REWARD/PROWL 4-E TANK MIX ON SOYBEANS

Read and follow all directions on the product label. Do not use this product on crops. REWARD PROWL 4-E herbicide contains a pre-emergent herbicide. Do not contain any water-soluble fertilizer or other nutrients.

Spray Equipment

Use the following equipment for thorough incorporation of the tank mix into the soil. Check the manufacturer's instructions for proper use of the equipment.

DRY FERTILIZER STATEMENT:

REWARD/PROWL 4-E herbicide may be incorporated with any dry bulk fertilizer on soybeans. However, uniform distribution of REWARD/PROWL 4-E herbicide and uniform application are necessary to achieve good results. See Appendix B for directions for incorporation and use.

Soil Incorporation:

The tank mix combination with REWARD must be incorporated into the soil immediately after application. Whenever possible, application and incorporation should be done in the same operation. This can be done by mounting the tanks and boom right on the incorporation equipment.

For thorough incorporation, use the following equipment:

Tandem Disc—Set to cut to a depth of 4 inches, followed by a spike-tooth harrow or some other leveling device which extends beyond the end

of the disc. For thorough incorporation, use the following directions:

1. Power down the disc to a depth of 4 inches.

Planting

Do not plant deeper than 2 inches. Soybeans should be planted at a depth of 2 inches. If it is necessary to plant deeper, the following application and incorporation should be done before planting. Do not work the soil deeper than the depth the herbicide was incorporated. The depth the herbicide was incorporated should be maintained. To avoid reworking the herbicide, do not work the soil deeper than the depth the herbicide was incorporated. To avoid reworking the herbicide, do not work the soil deeper than the depth the herbicide was incorporated.

4/2 2219

APPENDIX I

PROCEDURE FOR TESTING THE COMPATIBILITY OF REWARD AND COMBINATIONS WITH FLUID FERTILIZERS

1. Prepare a solution of the fluid fertilizer to be tested.
2. Add 100 ml of the solution to each of the four quart jars.

MATERIALS REQUIRED:

1. REWARD or REWARD TREFLAN 4-EC
2. Equalized soil mixture
3. Adjustable fertilizer spreader (Carpenter Sprinkler Co. or equivalent). The adjustment dial provides the rate only; it is dependent on the spreader's fan and/or air situation.
4. Four quart wide mouth glass jars with lids
5. Measuring spoons (25 ml pipette or graduated cylinder provides more accurate measurement. 1 tablespoon equals 3 teaspoons. 1 teaspoon equals approximately 5 milliliters)
6. Measuring cup 8 oz. (237 ml)

PROCEDURE:

1. Pour a pint (about 473 ml) of the fluid fertilizer into each of the quart jars.
2. Add 100 ml of soil to each jar and mix thoroughly.
3. Add 100 ml of the desired rate of REWARD or REWARD TREFLAN 4-EC to each jar.
4. Cover the jars with lids and mix thoroughly.
5. After 24 hours, inspect the jars for compatibility.

If a white precipitate is formed, the mixture should be discarded. If the mixture is cloudy, it should be discarded. If the mixture is clear, it should be used. Should the mixture separate, the REWARD or REWARD TREFLAN 4-EC should be added to the mixture and mixed thoroughly. If the mixture is cloudy, it should be discarded. If the mixture is clear, it should be used.

How to Use REWARD and REWARD TREFLAN 4-EC With The Fluid Fertilizer

REWARD and REWARD TREFLAN 4-EC are designed to be used with fluid fertilizers. The fluid fertilizer should be applied first, followed by REWARD or REWARD TREFLAN 4-EC. The fluid fertilizer should be applied at a rate of 40 to 60 gallons per acre. REWARD or REWARD TREFLAN 4-EC should be applied at a rate of 10 to 20 pounds per acre. The fluid fertilizer should be applied in a band, and REWARD or REWARD TREFLAN 4-EC should be applied in a broadcast application.

BEST DOCUMENT AVAILABLE

APPENDIX II

REWARD and REWARD TREFLAN 4-EC IMPREGNATION ON DRY BULK FERTILIZERS

CAUTION: REWARD and REWARD TREFLAN 4-EC are highly toxic to aquatic life. Do not apply to water bodies or wetlands.

REWARD and REWARD TREFLAN 4-EC are designed to be used with dry bulk fertilizers. The dry bulk fertilizer should be applied first, followed by REWARD or REWARD TREFLAN 4-EC. The dry bulk fertilizer should be applied at a rate of 100 to 200 pounds per acre. REWARD or REWARD TREFLAN 4-EC should be applied at a rate of 10 to 20 pounds per acre. The dry bulk fertilizer should be applied in a broadcast application, and REWARD or REWARD TREFLAN 4-EC should be applied in a broadcast application.

Approved Dry Fertilizer Ingredients

Approved Dry Fertilizer Ingredients	N	P	K
Ammonium Sulfate	21	0	0
Elemental Phosphorus	0	31	0
Potassium Chloride	0	0	40
Urea	46	0	0
Ammonium Nitrate	34	0	0
Superphosphate	0	16	0

REWARD Typical Physical Data

Property	Value
Appearance	White powder
Odor	None
Color	White
Specific Gravity	1.35
Moisture	0.5%

24

**REWARD FOR THE IMPREGNATION OF DRY BULK FERTILIZERS WITH
REWARD OR REWARD/REFLUXAN 4-EC ADDED TO A TON OF FERTILIZER***

FOR AVERAGE	REWARD Rate/Acre	REWARD/REFLUXAN 4-EC Rate/Acre	1.5t	2.0t	2.5t	3.0t	3.5t	4.0t	4.5t	5.0t	5.5t	6.0t	6.5t	7.0t	7.5t	8.0t	8.5t	9.0t	9.5t	10.0t
100 lb	10.0	10.0	20.0	20.0	20.0	20.0	20.0	20.0	20.0	20.0	20.0	20.0	20.0	20.0	20.0	20.0	20.0	20.0	20.0	20.0
200 lb	20.0	20.0	40.0	40.0	40.0	40.0	40.0	40.0	40.0	40.0	40.0	40.0	40.0	40.0	40.0	40.0	40.0	40.0	40.0	40.0
300 lb	30.0	30.0	60.0	60.0	60.0	60.0	60.0	60.0	60.0	60.0	60.0	60.0	60.0	60.0	60.0	60.0	60.0	60.0	60.0	60.0
400 lb	40.0	40.0	80.0	80.0	80.0	80.0	80.0	80.0	80.0	80.0	80.0	80.0	80.0	80.0	80.0	80.0	80.0	80.0	80.0	80.0
500 lb	50.0	50.0	100.0	100.0	100.0	100.0	100.0	100.0	100.0	100.0	100.0	100.0	100.0	100.0	100.0	100.0	100.0	100.0	100.0	100.0
600 lb	60.0	60.0	120.0	120.0	120.0	120.0	120.0	120.0	120.0	120.0	120.0	120.0	120.0	120.0	120.0	120.0	120.0	120.0	120.0	120.0
700 lb	70.0	70.0	140.0	140.0	140.0	140.0	140.0	140.0	140.0	140.0	140.0	140.0	140.0	140.0	140.0	140.0	140.0	140.0	140.0	140.0
800 lb	80.0	80.0	160.0	160.0	160.0	160.0	160.0	160.0	160.0	160.0	160.0	160.0	160.0	160.0	160.0	160.0	160.0	160.0	160.0	160.0
900 lb	90.0	90.0	180.0	180.0	180.0	180.0	180.0	180.0	180.0	180.0	180.0	180.0	180.0	180.0	180.0	180.0	180.0	180.0	180.0	180.0
1000 lb	100.0	100.0	200.0	200.0	200.0	200.0	200.0	200.0	200.0	200.0	200.0	200.0	200.0	200.0	200.0	200.0	200.0	200.0	200.0	200.0

BEST DOCUMENT AVAILABLE

30 31 32 33 34 35 36 37 38 39 40

476-2214

STORAGE AND DISPOSAL

PROHIBITIONS: Do not contaminate water, food, feed, seed, or birds by storage or disposal.

STORAGE: Keep container tightly closed when not in use. Can be stored at temperatures as low as minus 50 F.

PICIDE DISPOSAL: Rinse spray equipment. Wastes resulting from the use of this product may be disposed of on site or at an approved waste disposal facility.

CONTAINER DISPOSAL:

METAL: Triple rinse (or equivalent), then offer for recycling or reconditioning, or puncture and dispose of in a sanitary landfill, or by other approved State and local procedures.

PLASTIC: Triple rinse (or equivalent), then offer for recycling or reconditioning or puncture and dispose of in a sanitary landfill, or by incineration, or, if allowed by State and local authorities, by burning. If burned, stay out of smoke.