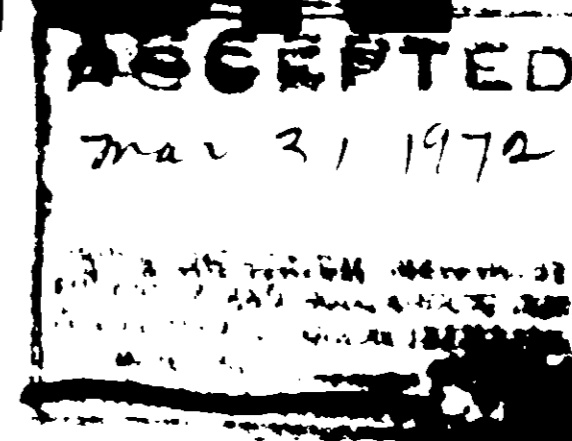


CAPTAN - TRITHION[®] 5-3 DUST

AGRICULTURAL FUNGICIDE - INSECTICIDE - ACARICIDE



ACTIVE INGREDIENTS:

CAPTAN*: N-[(trichloromethyl)thio]-4-cyclohexene-1,2-dicarboximide 92%

CARBOPHENOTHION**: S-[(p-chlorophenyl)thiomethyl]-O,O-diethyl phosphorodithioate 3%

INERT INGREDIENTS

92%
100%

*Not licensed for use where valid patents still exist.

**U.S. Patent number 2,793,234

OBSERVE THE FOLLOWING USE PRECAUTIONS

READ ALL LABEL DIRECTIONS BEFORE USING.

Use only for crop listed and only as specified on the label. This product is toxic to bees and should not be applied when bees are actively visiting the area.

In order that pesticidal residues on food and forage crops will not exceed tolerances established by the Federal Food and Drug Administration, use only at recommended rates and intervals, and do not apply closer to harvest than specified. Do not apply or allow to drift to areas occupied by unprotected humans or beneficial animals or onto adjoining food, fiber or pasture crops. **The grower is responsible** for residues on his crops as well as for damages by drift from his property to that of others.

Consult State Agricultural Experiment Stations or the State Agricultural Extension Service for additional information, as the timing, number and rate of applications needed will vary with local conditions.

FISH AND WILDLIFE CAUTIONS: Toxic to fish and wildlife. Keep out of lakes, streams, and ponds. Birds feeding on treated areas may be killed.

DIRECTIONS FOR USE

This product is to be applied only by experienced personnel using approved safety equipment. Apply when air is calm. To obtain most effective results, apply with a ground blower or by airplane. Apply at first sign of infestation and infection. Make thorough coverage of plants with a uniform deposit of dust.

For control of disease persisting after the prescribed time limits have expired, an effective fungicide such as CAPTAN should be used alone in a manner which will not leave residues in excess of established tolerance.

RECOMMENDATIONS

STRAWBERRIES: For control of botrytis fruit rot (gray mold), strawberry aphid, two-spotted mites, apply 25 to 40 pounds per acre. Begin applications when new growth starts and repeat at 7 to 10 day intervals. Use higher dosage or shorten interval under conditions of frequent rains, heavy dew or other circumstances favorable to infection. Do not apply within 7 days of harvest.

BURY WASTE AND EMPTY CONTAINER IN A SAFE PLACE.

50 LB. NET

CAUTION

Keep Out of Reach of Children

HAZARDOUS IF SWALLOWED

Avoid breathing dust, contact with skin and eyes.

Wear dust respirator and goggles.

Wash hands, arms and face thoroughly with soap and water before eating or smoking.

Wash all contaminated clothing with soap and hot water before re-use.

Do not contaminate food or feed.

NOTE TO PHYSICIAN: TRITHION may cause cholinesterase inhibition. ATROPINE IS ANTI-DOTAL.

NOTICE: Stauffer Chemical Company makes no warranty, express or implied, including the warranties of merchantability and/or fitness for any particular purpose, concerning this material, except those which are contained on Stauffer's label.

STORE IN A COOL, DRY PLACE. PROTECT FROM EXCESSIVE HEAT.

E.P.A. REG. NO. 476-2110-AA

ARC 275-277

MADE IN U.S.A.

STAUFFER CHEMICAL COMPANY

WESTPORT, CT 06880