

ROSS
207895 301
1 1

~~JAN 28 1988~~
2-1-88

Mr. Alan S. Ross
Koppers Company
440 College Park Drive
Monroeville, PA 15146

Dear Mr. Ross:

Subject: Woodtreat MB RTU
EPA Registration No. 453-298
Your Letter Dated November 9, 1987

We have no objection to the use of the alternate formulation requested in your letter of the above date. The amendment has been inserted in the file for the subject product.

The registration record for the subject product has been amended to include the additional brand name listed below. It is understood that the label will be identical with that of the basic label accepted under this registration except for brand name.

Additional Brand Name

Woodtreat Clear Wood Preservative

The labeling referred to above, submitted in connection with registration under the Federal Insecticide, Fungicide, and Rodenticide Act, is acceptable subject to the comments listed below. Five copies of the finished labeling must be submitted.

1. Change "Active Ingredients" to the singular.

10770:I/C:DeLuise:R-3:KENCO:01/22/88:02/01/88:AM:lf;EK:lf

CONCURRENCES

SYMBOL	SURNAME	DATE						

206

-2-

2. In the Environmental Hazard Statement add the phrase "Do not contaminate water when disposing of equipment wastewater."

A stamped copy of the label is enclosed for your records.

Sincerely yours,

Lois A. Rossi
Product Manager (21)
Fungicide-Herbicide Branch
Registration Division (TS-767C)

Enclosure

DIRECTIONS FOR USE

It is a violation of Federal law to use this product in a manner inconsistent with its labeling.

Wolman[®] Clear Wood Preservative should be applied every one or two years to non-pressure treated wood to provide protection against molds, mildew, ~~fungi~~ algae and decay. Special water repellents also provide protection against moisture damage. *Wolman*[®] Clear Wood Preservative is used to treat wood above ground (decks, fencing, siding, etc.). It may darken some woods. A test application is recommended to determine suitability. *Wolman*[®] Clear Wood Preservative exceeds the Federal specification for water repellency, TT-W-572B, paragraph 3.7.

SURFACE PREPARATION: All surfaces should be clean, dry and free of mildew. *Wolman*[®] Deck Brightener is recommended to prepare and renew discolored surfaces.

APPLICATION: Mix thoroughly before use. Do not thin or combine *Wolman*[®] Clear Wood Preservative with other products.

- Apply *Wolman*[®] Clear Wood Preservative by brush, pad, roller (1 or 2 coats), dip (3 minutes) or sprayer (do not puddle).
- One gallon covers approximately 150-300 square feet. Coverage will vary depending upon application and surface texture.
- Apply when outside temperatures are above 40°F and when 24 hours of precipitation-free weather is expected.
- Dries to touch in one hour. Allow 24 hours between coats; allow 24 hours before using surface.
- Do not apply over paint or stain. Treated surfaces may be finished with oil-based paints or stains.
- Clean equipment with mineral spirits or paint thinner.
- *Wolman*[®] Clear Wood Preservative will not prevent the natural graying of wood due to sunlight. For lasting color use *Wolman*[®] Deck Stains over *Wolman*[®] Clear Wood Preservative.

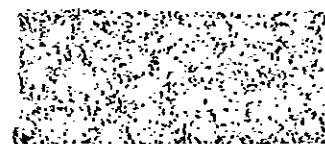
STORAGE AND DISPOSAL

STORAGE: Store this product in its originally labeled container in a storage area located in a cool place. Keep container and freshly treated articles away from high temperature areas, sparks, fire, or open flame. If static generating conditions exist, provide necessary grounding and bonding. Keep this product separate from other pesticides during storage to prevent cross contamination of other pesticides, fertilizers, food and feed. Remove sources of ignition if this product is released or spilled. Confine area of spill and avoid breathing vapors. Ventilate area. Cover with absorbent material and place in approved containers for disposal using non-sparking tools.

PESTICIDE DISPOSAL: Do not contaminate water, food, or feed by storage or disposal. Pesticide wastes are toxic. Improper disposal of excess pesticide, spray mixture, or rinsate is a violation of Federal Law. If these wastes cannot be disposed of by use according to label instructions, contact your State Pesticide or Environmental Control Agency, or the Hazardous Waste representative at the nearest EPA Regional Office for guidance.

CONTAINER DISPOSAL: Triple rinse (or equivalent). Then offer for recycling or reconditioning, or puncture and dispose of in a sanitary landfill, or by other procedures approved by state and local authorities.

BEST AVAILABLE COPY



DANGER! HARM
CAUSES EYE AND SKIN
VAPORS MAY BE HARM

EPA Reg. No. 453-298

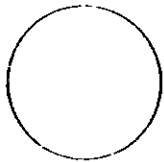
1 U.S. Gallon (

3063

In an[®]

Clear

Conervative Wood Repellent



ACCEPTED
WITH COMMENTS
in EPA Letter Dated:

FEB 1 1988

Change the use of this product to
apply to wood preservative use
for exterior use only. Do not use
for interior use. Use only for
wood preservative use.

953-090



Wood Repellent

BEST AVAILABLE COPY

KEEP OUT OF REACH OF CHILDREN.
See side panel for first aid
and additional precautionary statements

ACTIVE INGREDIENTS:	
3 Iodo-2-Propoxybutyl carbamate	0.50%
INERT INGREDIENTS	99.50%
TOTAL	100.00%
This product contains petroleum distillates (mineral spirits).	

PRECAUTIONARY STATEMENTS HAZARDS TO HUMANS (AND DOMESTIC ANIMALS) **DANGER**

HARMFUL IF SWALLOWED, INHALED, OR ABSORBED THROUGH SKIN. MAY CAUSE EYE AND SKIN IRRITATION.

Avoid contact with eyes, skin, or clothing. Use of goggles and protective clothing (rubber gloves) when dipping and an approved respirator when spraying is recommended. Avoid breathing of vapors, mist or substantially saturated atmosphere. Use only in well ventilated areas. Keep containers closed when not in use. Do not take internally.

FIRST AID: For skin contact, wash thoroughly with soap and water. Remove contaminated clothing and shoes. Wash clothes before reuse. In case of eye contact, flush immediately with plenty of water for 15 minutes and get medical attention.

If swallowed, CALL A PHYSICIAN IMMEDIATELY. DO NOT induce vomiting.

If inhaled, remove to fresh air.

ENVIRONMENTAL HAZARDS: This product is toxic to fish and wildlife. Do not apply directly to any body of water. Do not contaminate water by cleaning of equipment or disposal of wastes.

This product is toxic to domestic animals. Treated sawdust and other wood wastes should be disposed of properly and should not come in contact with domestic animals or be used as mulch where it will come in contact with useful living plants. Care should be taken to prevent drip or spray from contacting ornamental shrubs, trees, grass, and other desirable vegetation.

Vapors may cause injury if adequate ventilation is not insured. Do not use this product indoors, or any other confined areas, where the vapors may concentrate or migrate in doors and cause injury to plant or animal life.

PHYSICAL OR CHEMICAL HAZARDS: COMBUSTIBLE. DO NOT use, pour, spill, or store near heat or open flame.

IN CASE OF FIRE: Use dry chemicals, foam, water, fog, or CO₂. Cool closed containers with water.

Limited Warranty: Koppers will refund the purchase price to the original consumer if within one year this product is shown to be defective. Notify Koppers Company, Inc. 436 7th Avenue, Pittsburgh, PA 15219, within sixty (60) days of learning of defect. KOPPERS MAKES NO FURTHER WARRANTIES EXPRESS OR IMPLIED INCLUDING WARRANTIES OF FITNESS FOR A PARTICULAR PURPOSE OR MERCHANTABILITY WHICH EXTEND BEYOND THE DURATION OF THIS WRITTEN WARRANTY. Koppers shall not be liable for any incidental or consequential damages. Some states do not allow limitations on how long any implied warranty lasts and/or limitation of incidental or consequential damages, so the above limitation and exclusion may not apply to you. This warranty gives you specific legal rights, and you may also have other rights which vary from state to state.