

**STIR WELL BEFORE USING**

**DIRECTIONS**

This product is formulated to penetrate into the wood, impregnating it with Pentachlorophenol for protection against rot, termites and powder post beetles, as well as coating the wood with water repellents for dimensional control against grain raising, warping and shrinkage, plus imparting a colorful stain to the treated wood—ALL IN ONE EASY APPLICATION.

This product, which is highly penetrating, must be applied only to new or unfinished wood—never on a painted, varnished or lacquered surface. This product will not raise the grain, nor will it show lap or brush marks.

Shake or stir contents of the can thoroughly and apply a liberal coat by brush or spray, particularly at the end grain or cut surfaces where moisture pick-up is greatest. To increase the efficiency of the preservative and moisture repellent qualities, a second coat is generally recommended within 24 hours after first application. Wood to be in contact with the soil should have 2 brush or spray coats.

On smooth surfaces, one gallon covers approximately 300 to 350 sq. feet. On rough surfaces, one gallon covers about 200 to 250 sq. feet. Surfaces treated with this product may be varnished or lacquered after 72 hours drying time.

**NOTICE**

Avoid contamination of feed or foodstuffs. Punch holes in containers and dispose with waste by burying in non-crop lands, away from water supplies.

Do not contaminate water by cleaning equipment or disposal of waste and containers.

Treated sawdust and other wood wastes should not come in contact with domestic animals, or be used as mulch where it will come in contact with useful living plants.

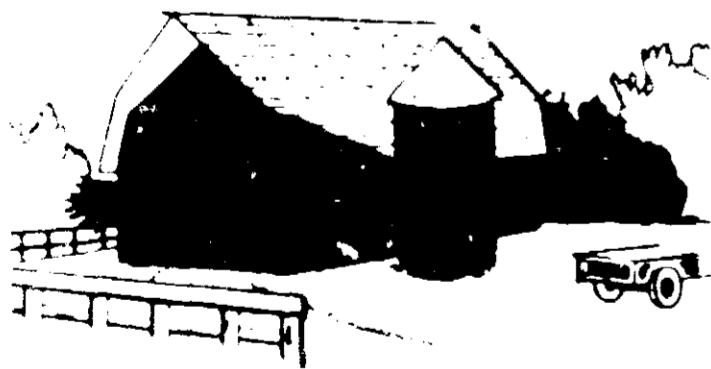
Do not use in dairy barns or poultry houses.

# PENTA STAIN

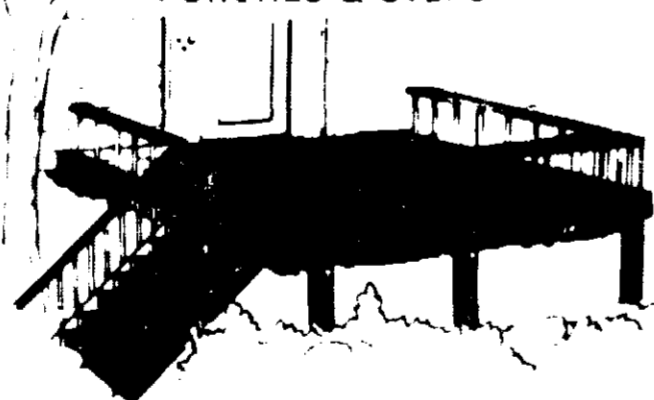
*TRIPLE ACTION*

**STAINS REPELS PROTECTS**

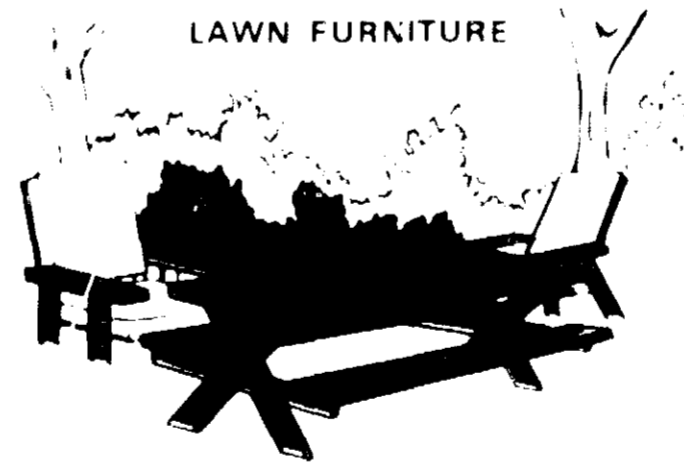
**BARN & OUT BUILDINGS**



**PORCHES & STEPS**



**LAWN FURNITURE**



**504 Teal Green**

EPA Reg. No. 453 180  
EPA EST. 453 MO 1

Active Ingredients	
Pentachlorophenol	4.00%
Other chlorophenols and treated compounds	1.00%
Petroleum solvent	64.53%
Inert Ingredients	29.47%
<b>Total</b>	<b>100.00%</b>

**FEI**



5137 SOUTHWEST AVENUE  
ST. LOUIS, MISSOURI 63110

**WARNING: KEEP OUT OF REACH OF CHILDREN: See other panel for additional wa**  
READ "LIMIT OF WARRANTY AND LIABILITY" BEFORE BUYING OR USING. IF SUCH TERMS ARE NOT ACCEPTABLE, RETURN

**NET CONTENTS            GALLON**

**STIR WELL BEFORE USING**

**DIRECTIONS**

This product is formulated to penetrate into the wood, impregnating it with Pentachlorophenol for protection against rot, termites and powder post beetles, as well as coating the wood with water-repellents for dimensional control against grain raising, warping and shrinkage, plus imparting a colorful stain to the treated wood—ALL IN ONE EASY APPLICATION.

This product, which is highly penetrating, must be applied only to new or unfinished wood—never on a painted, varnished or lacquered surface. This product will not raise the grain, nor will it show lap or brush marks.

Shake or stir contents of the can thoroughly and apply a liberal coat by brush or spray, particularly at the end grain or cut surfaces where moisture pick-up is greatest. To increase the efficiency of the preservative and moisture repellent qualities, a second coat is generally recommended within 24 hours after first application. Wood to be in contact with the soil should have 2 brush or spray coats.

On smooth surfaces, one gallon covers approximately 300 to 350 sq. feet. On rough surfaces, one gallon covers about 200 to 250 sq. feet. Surfaces treated with this product may be varnished or lacquered after 72 hours drying time.

**NOTICE**

Avoid contamination of feed or foodstuffs.

Punch holes in containers and dispose with waste by burying in non-crop lands away from water supplies.

Do not contaminate water by cleaning equipment or disposal of waste and containers.

Treated sawdust and other wood wastes should not come in contact with domestic animals, or be used as mulch where it will come in contact with useful living plants.

Do not use in dairy barns or poultry houses.

# PENTA STAIN

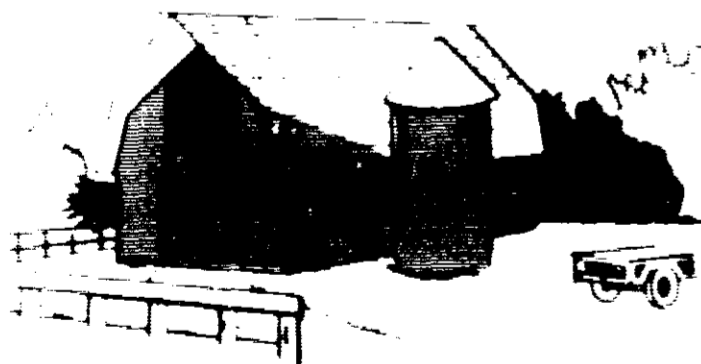
*TRIPLE ACTION*

**STAINS**

**REPELS**

**PROTECTS**

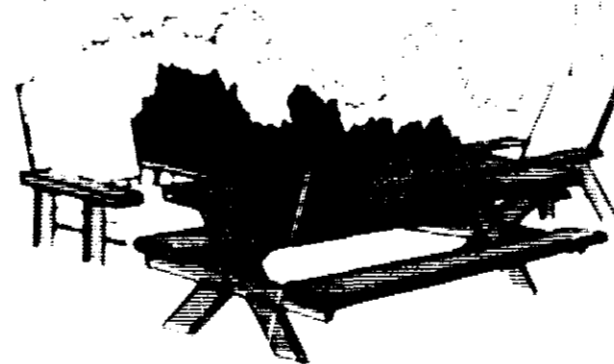
**BARN & OUT BUILDINGS**



**PORCHES & STEPS**

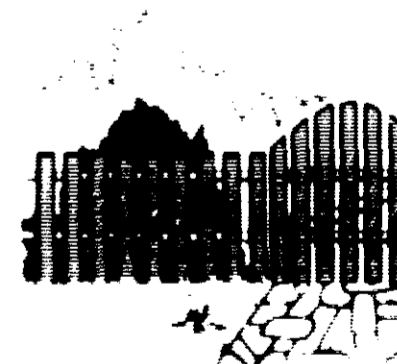


**LAWN FURNITURE**



**504 Teal Green**

**FENCE**



5137 SOUTHWEST AVENUE  
ST. LOUIS, MISSOURI 63110

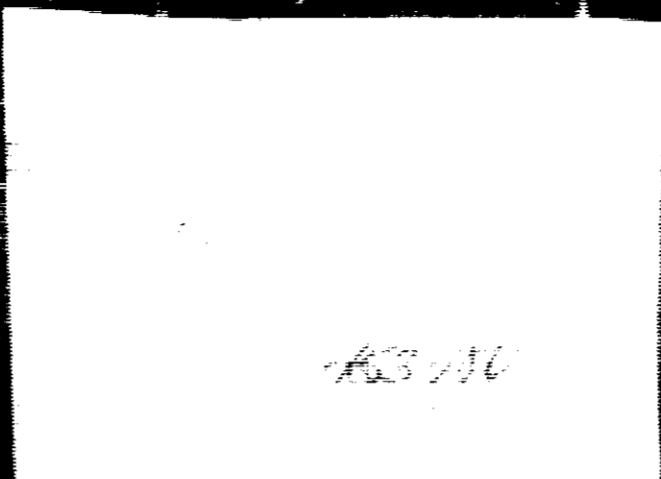
**WARNING: KEEP OUT OF REACH OF CHILDREN: See other panel for additional warning.**  
READ "LIMIT OF WARRANTY AND LIABILITY" BEFORE BUYING OR USING. IF SUCH TERMS ARE NOT ACCEPTABLE, RETURN AT

**NET CONTENTS [ ] GALLON**

# PENTASTAIN

TRIPLE ACTION

STAINS REPELS PROTECTS



## LIMIT OF WARRANTY AND LIABILITY

This company warrants that this material conforms to the chemical description on the label and is reasonably fit for the purposes referred to in the directions for use. This product is sold subject to the understanding that the buyer assumes all risks of use or handling which may result in loss or damage which are beyond the control of the seller, such as for example incompatibility with other products and the manner of its use of application. NO OTHER EXPRESS OR IMPLIED WARRANTY OF FITNESS OR MERCHANTABILITY IS MADE. The exclusive remedy of the buyer, and the limit of liability of this company or any other seller for any and all losses, injuries or damages resulting from the use or handling of this product shall be the purchase price paid by the user or buyer for the quantity of this product involved. The buyer and all users are deemed to have accepted the terms of this notice which may not be varied by any verbal or written agreement.

STIR WELL BEFORE USING

## WARNING

MAY BE FATAL IF SWALLOWED. HARMFUL IF INHALED OR ABSORBED THROUGH SKIN. CAUSES SKIN IRRITATION. MAY PRODUCE DELAYED CHEMICAL BURNS. COMBUSTIBLE.

Do not breathe spray mist. Use only with adequate ventilation. Do not get in eyes, on skin or on clothing. Wash thoroughly after handling. Wear protective clothing and rubber gloves when handling the freshly treated lumber.

Do not store or use near open flames.

FIRST AID: If swallowed, induce vomiting by sticking finger down throat or by giving soapy or strong salty water to drink. Repeat until vomit is clear. Call a physician. Never give anything by mouth to an unconscious person. FIRST AID: In case of contact, wash skin with soap and water; for eyes, flush with water for at least 15 minutes and get medical attention.

NOTE TO PHYSICIAN: This product is a metabolic stimulant, causes hyperthermia. Treat symptomatically.

This product will kill fish and wildlife. Keep out of lakes, streams, and ponds.

504 Teal Green

FURNITURE



FENCES



GARAGES



SHINGLES



WARNING: KEEP OUT OF REACH OF CHILDREN: See other panel for additional warnings  
WARRANTY AND LIABILITY: BEFORE BUYING OR USING. IF SUCH TERMS ARE NOT ACCEPTABLE, RETURN AT ONCE UNOPENED

NET CONTENTS            GALLON

WOOD TREATING CHEMICALS DEPT.

KOPPERS COMPANY, INC.