

**STIR WELL BEFORE USING**

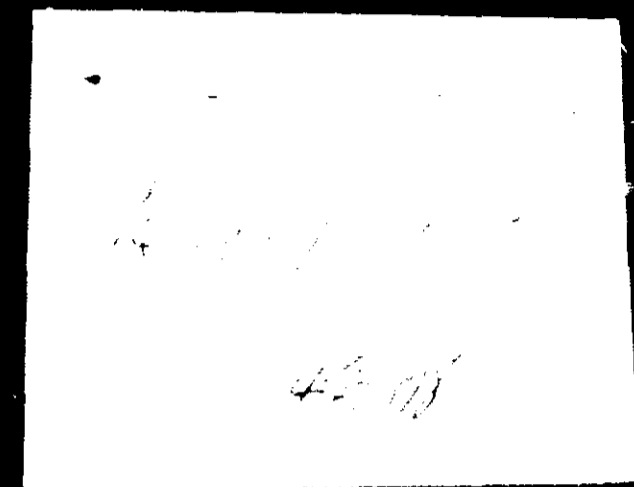
**DIRECTIONS**

This product is formulated to penetrate into the wood, impregnating it with Pentachlorophenol for protection against rot, termites and powder post beetles, as well as coating the wood with water-repellents for dimensional control against grain raising, warping and shrinkage, plus imparting a colorful stain to the treated wood—ALL IN ONE EASY APPLICATION.

This product, which is highly penetrating, must be applied only to new or unfinished wood—never on a painted, varnished or lacquered surface. This product will not raise the grain, nor will it show lap or brush marks.

Shake or stir contents of the can thoroughly and apply a liberal coat by brush or spray, particularly at the end grain or cut surfaces where moisture pick-up is greatest. To increase the efficiency of the preservative and moisture repellent qualities, a second coat is generally recommended within 24 hours after first application. Wood to be in contact with the soil should have 2 brush or spray coats.

On smooth surfaces, one gallon covers approximately 300 to 350 sq. feet. On rough surfaces, one gallon covers about 200 to 250 sq. feet. Surfaces treated with this product may be varnished or lacquered after 72 hours drying time.



**NOTICE**

Avoid contamination of feed or foodstuffs.

Punch holes in containers and dispose with waste by burying in non-crop lands away from water supplies.

Do not contaminate water by cleaning equipment or disposal of waste and containers.

Treated sawdust and other wood wastes should not come in contact with domestic animals, or be used as mulch where it will come in contact with useful living plants.

Do not use in dairy barns or poultry houses.

# PENTA STAIN

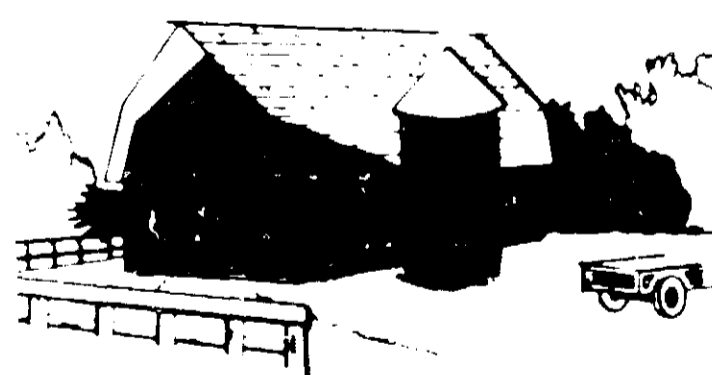
**TRIPLE ACTION**

**STAINS REPELS PROTECTS**

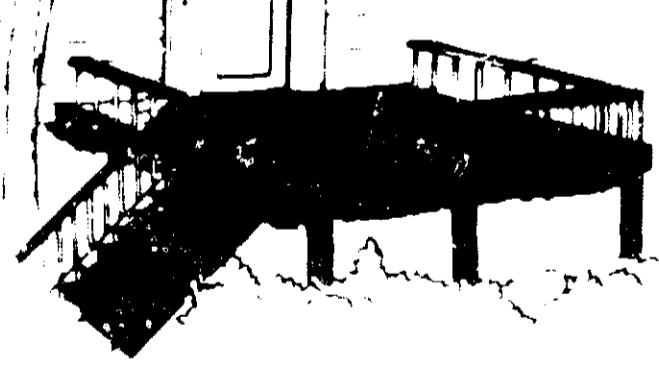
**LIMIT OF WARRANTY**

This company warrants that the chemical description on the label for the purposes referred to in the product is sold subject to the buyer assumes all risks of result in loss or damage with the seller, such as for example products and the manner of use. OTHER EXPRESS OR IMPLIED OR MERCHANTABILITY IS OF THE BUYER, AND THE LIMIT OF ANY OTHER SELLER FOR ANY AND RESULTING FROM THE USE OR HANDLING OF THE PURCHASE PRICE PAID BY THE QUANTITY OF THIS PRODUCT IS DEEMED TO HAVE ACCEPTED. MAY NOT BE VARYED BY ANY OTHER AGREEMENT.

**BARN & OUT BUILDINGS**



**PORCHES & STEPS**



**LAWN FURNITURE**



**505 Prairie Green**

EPA Reg. No. 453-178  
EPA EST. 453-MO-1

Active Ingredients	
Pentachlorophenol	4.50%
Other Chlorophenols and related compounds	0.50%
Petroleum solvents	98.53%
Water	29.47%
<b>Total</b>	<b>100.00%</b>

**FENCES**



5137 SOUTHWEST AVENUE  
ST. LOUIS, MISSOURI 63110

**WARNING: KEEP OUT OF REACH OF CHILDREN: See other panel for additional warnings.**  
READ "LIMIT OF WARRANTY AND LIABILITY" BEFORE BUYING OR USING. IF SUCH TERMS ARE NOT ACCEPTABLE, RETURN AT ONCE UNOPENED.

**NET CONTENTS**  **GALLON**

STIR WELL BEFORE USING

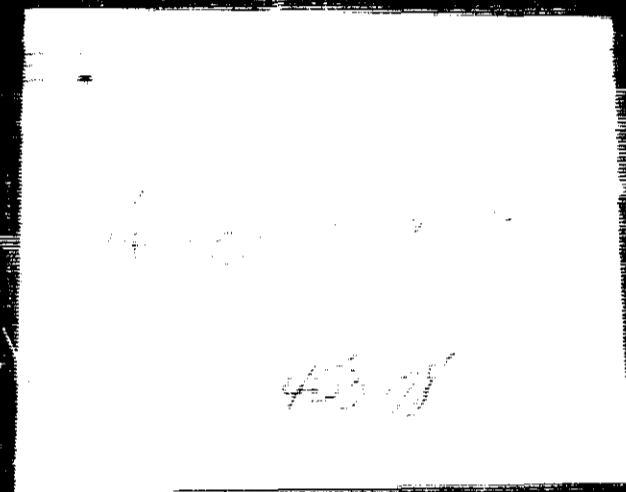
**DIRECTIONS**

This product is formulated to penetrate into the wood, impregnating it with Pentachlorophenol for protection against rot, termites and powder post beetles, as well as coating the wood with water-repellents for dimensional control against grain raising, warping and shrinkage, plus imparting a colorful stain to the treated wood—ALL IN ONE EASY APPLICATION.

This product, which is highly penetrating, must be applied only to new or unfinished wood—never on a painted, varnished or lacquered surface. This product will not raise the grain, nor will it show lap or brush marks.

Shake or stir contents of the can thoroughly and apply a liberal coat by brush or spray, particularly at the end grain or cut surfaces where moisture pick-up is greatest. To increase the efficiency of the preservative and moisture repellent qualities, a second coat is generally recommended within 24 hours after first application. Wood to be in contact with the soil should have 2 brush or spray coats.

On smooth surfaces, one gallon covers approximately 300 to 350 sq. feet. On rough surfaces, one gallon covers about 200 to 250 sq. feet. Surfaces treated with this product may be varnished or lacquered after 72 hours drying time.



**NOTICE**

Avoid contamination of feed or foodstuffs.

Punch holes in containers and dispose with waste by burying in non-crop lands away from water supplies.

Do not contaminate water by cleaning equipment or disposal of waste and containers.

Treated sawdust and other wood wastes should not come in contact with domestic animals, or be used as mulch where it will come in contact with useful living plants.

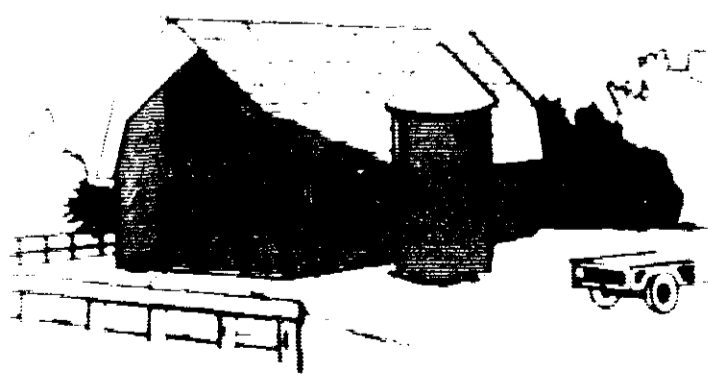
Do not use in dairy barns or poultry houses.

# PENTA STAIN

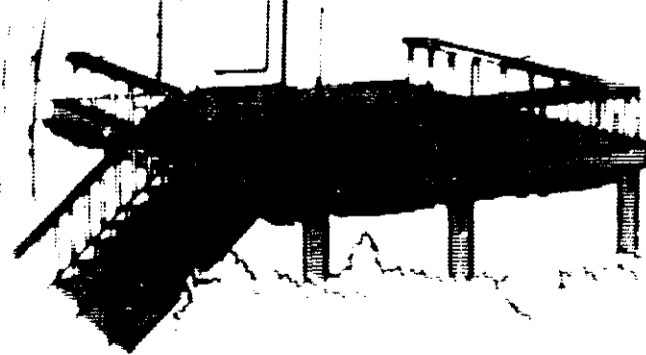
**TRIPLE  
ACTION**

**STAINS    REPELS    PROTECTS**

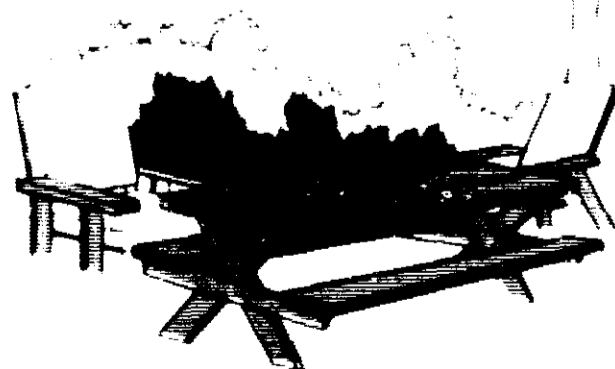
BARN & OUT BUILDINGS



PORCHES & STEPS



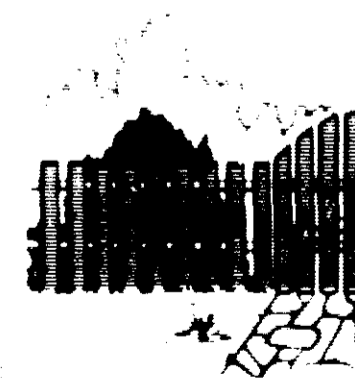
LAWN FURNITURE



## 505 Prairie Green

EPA Reg. No. 450-178  
EPA Est. No. 450-178

FEN



5137 SOUTHWEST AVENUE  
ST. LOUIS, MISSOURI 63110

**WARNING: KEEP OUT OF REACH OF CHILDREN: See other panel for additional warnings.**  
READ "LIMIT OF WARRANTY AND LIABILITY" BEFORE BUYING OR USING. IF SUCH TERMS ARE NOT ACCEPTABLE, RETURN

**NET CONTENTS**  **GALLON**

**WARNING**

MAY BE FATAL IF SWALLOWED. HALED OR ABSORBED THROUGH SKIN. IRRITATION. MAY PRODUCE DELAYED BURNS. COMBUSTIBLE.

Do not breathe spray mist. Use only with ventilation. Do not get in eyes, on skin or on clothing. Wash thoroughly after handling. Wear protective rubber gloves when handling the freshly treated material.

Do not store or use near open flames.

**FIRST AID:** If swallowed, induce vomiting by giving 1-2 teaspoons of water to drink. Repeat until vomit is clear. Never give anything by mouth to an unconscious person.

**FIRST AID:** In case of contact, wash skin with water; for eyes, flush with water for at least 15 minutes and get medical attention.

**NOTE TO PHYSICIAN:** This product is a central nervous system stimulant, causes hyperthermia. Treat symptomatically.

This product will kill fish and wildlife. Keep away from streams, and ponds.

# PENTASTAIN

**TRIPLE ACTION**

**STAINS REPELS PROTECTS**

### LIMIT OF WARRANTY AND LIABILITY

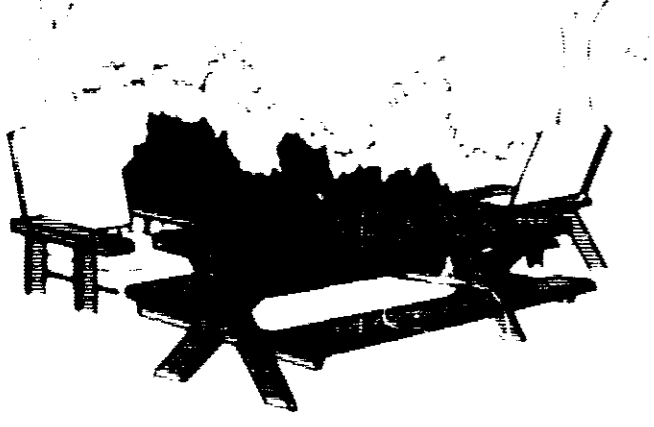
This company warrants that this material conforms to the chemical description on the label and is reasonably fit for the purposes referred to in the directions for use. This product is sold subject to the understanding that the buyer assumes all risks of use or handling which may result in loss or damage which are beyond the control of the seller, such as for example incompatibility with other products and the manner of its use or application. NO OTHER EXPRESS OR IMPLIED WARRANTY OF FITNESS OR MERCHANTABILITY IS MADE. The exclusive remedy of the buyer, and the limit of liability of this company or any other seller for any and all losses, injuries or damages resulting from the use or handling of this product shall be the purchase price paid by the user or buyer for the quantity of this product involved. The buyer and all users are deemed to have accepted the terms of this notice which may not be varied by any verbal or written agreement.

## 505 Prairie Green

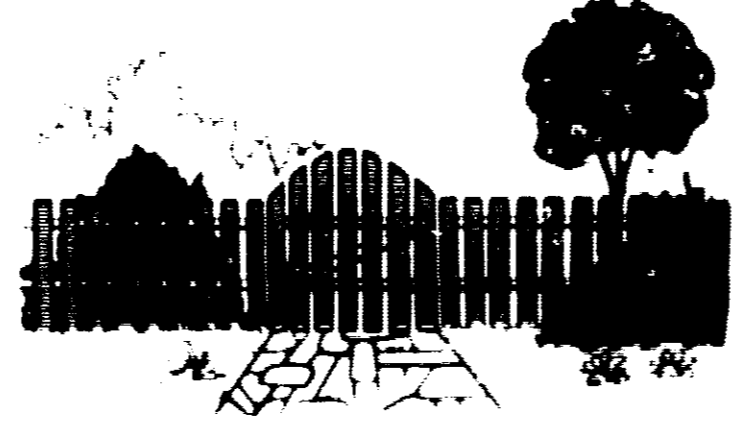
EPA Reg. No. 400-178  
EPA Est. No. 453-77-1

Application: Apply to all surfaces to be treated. For best results, apply to clean, dry surfaces. For staining, apply to the stain and rub with a brush. For repellent, apply to the surface and rub with a brush. For protection, apply to the surface and rub with a brush. For more information, see the label.

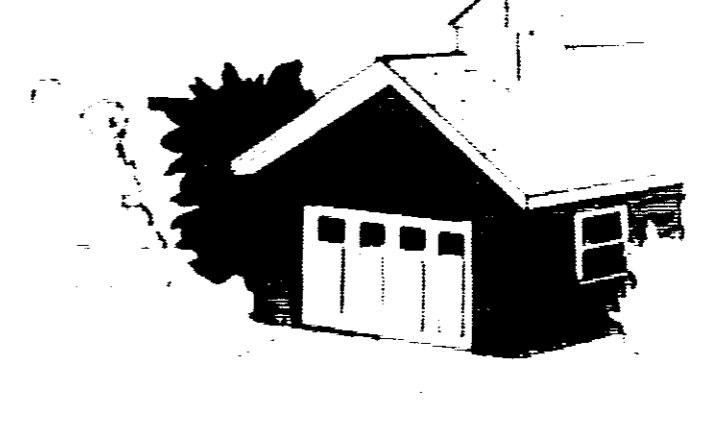
LAWN FURNITURE



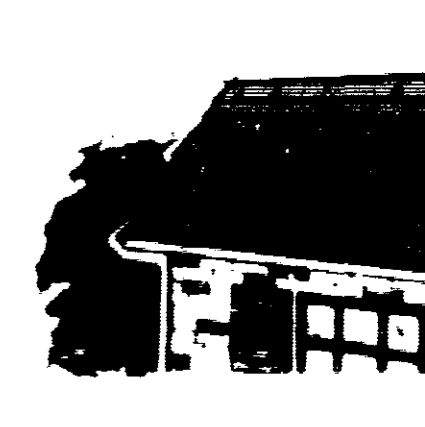
FENCES



GARAGES



SHINGLES



**WARNING: KEEP OUT OF REACH OF CHILDREN: See other panel for additional warnings**

READ "LIMIT OF WARRANTY AND LIABILITY" BEFORE BUYING OR USING. IF SUCH TERMS ARE NOT ACCEPTABLE, RETURN AT ONCE UNOPENED.

**NET CONTENTS [ ] GALLON**

**WOOD TREATING CHEMICALS**

KOPPERS COMPANY, INC.