

STIR WELL BEFORE USING

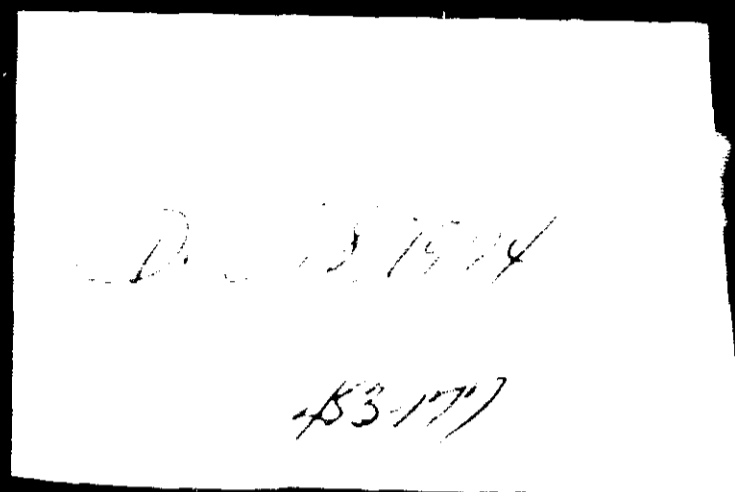
DIRECTIONS

This product is formulated to penetrate into the wood, impregnating it with Pentachlorophenol for protection against rot, termites and powder post beetles, as well as coating the wood with water repellents for dimensional control against grain raising, warping and shrinkage, plus imparting a colorful stain to the treated wood—ALL IN ONE EASY APPLICATION.

This product, which is highly penetrating, must be applied only to new or unfinished wood—never on a painted, varnished or lacquered surface. This product will not raise the grain, nor will it show lap or brush marks.

Shake or stir contents of the can thoroughly and apply a liberal coat by brush or spray, particularly at the end grain or cut surfaces where moisture pick-up is greatest. To increase the efficiency of the preservative and moisture repellent qualities, a second coat is generally recommended within 24 hours after first application. Wood to be in contact with the soil should have 2 brush or spray coats.

On smooth surfaces, one gallon covers approximately 300 to 350 sq. feet. On rough surfaces, one gallon covers about 200 to 250 sq. feet. Surfaces treated with this product may be varnished or lacquered after 72 hours drying time.



NOTICE

Avoid contamination of feed or foodstuffs.

Punch holes in containers and dispose with waste by burying in non-crop lands away from water supplies.

Do not contaminate water by cleaning equipment or disposal of waste and containers.

Treated sawdust and other wood wastes should not come in contact with domestic animals, or be used as mulch where it will come in contact with useful living plants.

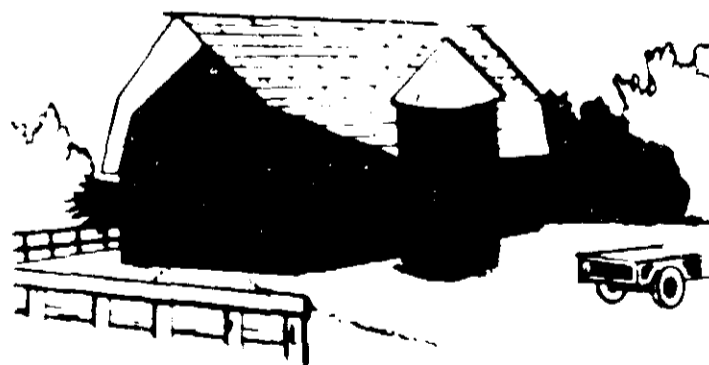
Do not use in dairy barns or poultry houses.

PENTA STAIN

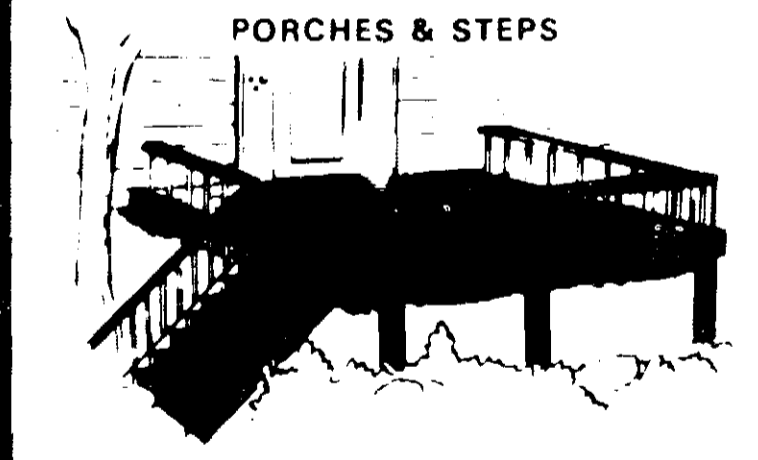
TRIPLE ACTION

STAINS REPELS PROTECTS

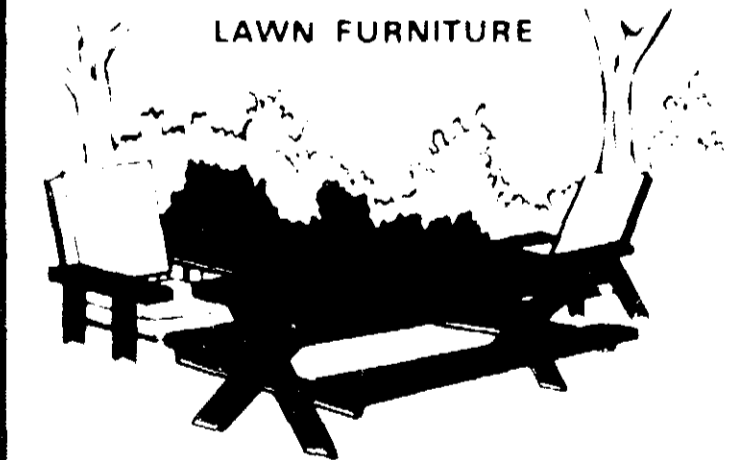
BARN & OUT BUILDINGS



PORCHES & STEPS



LAWN FURNITURE



503 Sun Dance Yellow

EPA Reg. No. 453-177
EPA EST. 453-MO-1

Active Ingredients	
Pentachlorophenol	4.50%
Other chlorophenols and related compounds	0.50%
Petroleum solvent	68.53%
Inert ingredients	26.47%
Total	100.00%



5137 SOUTHWEST AVENUE
ST. LOUIS, MISSOURI 63110

WARNING: KEEP OUT OF REACH OF CHILDREN: See other panel for additional warnings.
READ "LIMIT OF WARRANTY AND LIABILITY" BEFORE BUYING OR USING. IF SUCH TERMS ARE NOT ACCEPTABLE, RETURN

NET CONTENTS [] GALLON

STIR WELL BEFORE USING

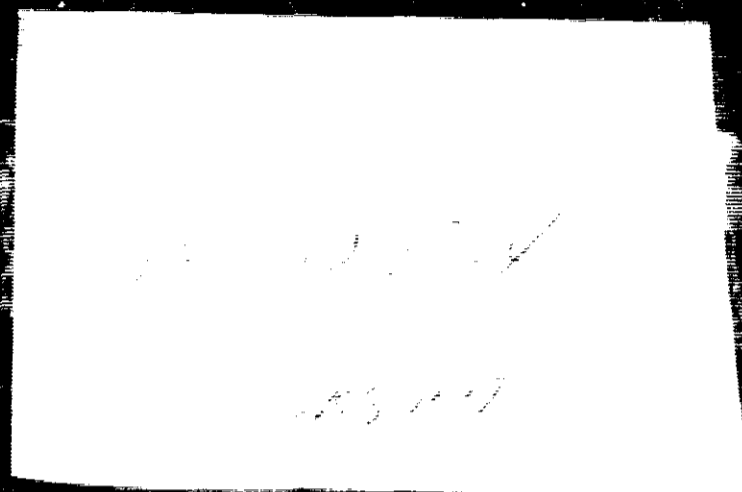
DIRECTIONS

This product is formulated to penetrate into the wood, impregnating it with Pentachlorophenol for protection against rot, termites and powder post beetles, as well as coating the wood with water-repellents for dimensional control against grain raising, warping and shrinkage, plus imparting a colorful stain to the treated wood—ALL IN ONE EASY APPLICATION.

This product, which is highly penetrating, must be applied only to new or unfinished wood—never on a painted, varnished or lacquered surface. This product will not raise the grain, nor will it show lap or brush marks.

Shake or stir contents of the can thoroughly and apply a liberal coat by brush or spray, particularly at the end grain or cut surfaces where moisture pick-up is greatest. To increase the efficiency of the preservative and moisture repellent qualities, a second coat is generally recommended within 24 hours after first application. Wood to be in contact with the soil should have 2 brush or spray coats.

On smooth surfaces, one gallon covers approximately 300 to 350 sq. feet. On rough surfaces, one gallon covers about 200 to 250 sq. feet. Surfaces treated with this product may be varnished or lacquered after 72 hours drying time.



NOTICE

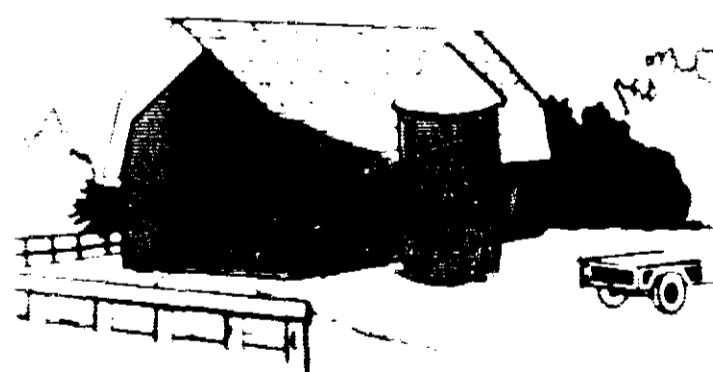
- Avoid contamination of feed or foodstuffs.
- Punch holes in containers and dispose with waste by burying in non-crop lands away from water supplies.
- Do not contaminate water by cleaning equipment or disposal of waste and containers.
- Treated sawdust and other wood wastes should not come in contact with domestic animals, or be used as mulch where it will come in contact with useful living plants.
- Do not use in dairy barns or poultry houses.

TRIPLE ACTION

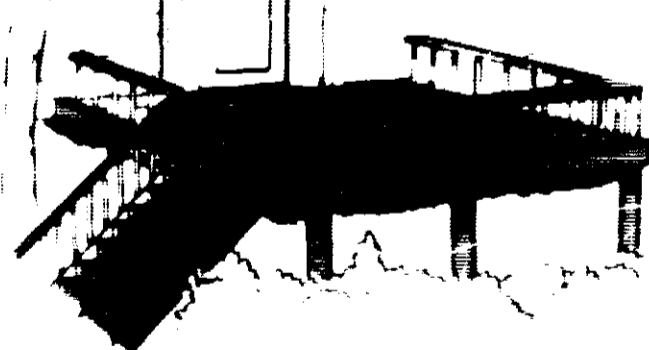
PENTACHLOROPHENOL STAIN

STAINS REPELS PROTECTS

BARN & OUT BUILDINGS



PORCHES & STEPS



LAWN FURNITURE



503 Sun Dance Yellow

EPA REG. NO. 453-177
EPA EST. 453-M-1

FEN

5137 SOUTHWEST AVENUE
ST. LOUIS, MISSOURI 63110

WARNING: KEEP OUT OF REACH OF CHILDREN: See other panel for additional warnings.
READ "LIMIT OF WARRANTY AND LIABILITY" BEFORE BUYING OR USING. IF SUCH TERMS ARE NOT ACCEPTABLE, RETURN

NET CONTENTS [] GALLON