

STIR WELL BEFORE USING

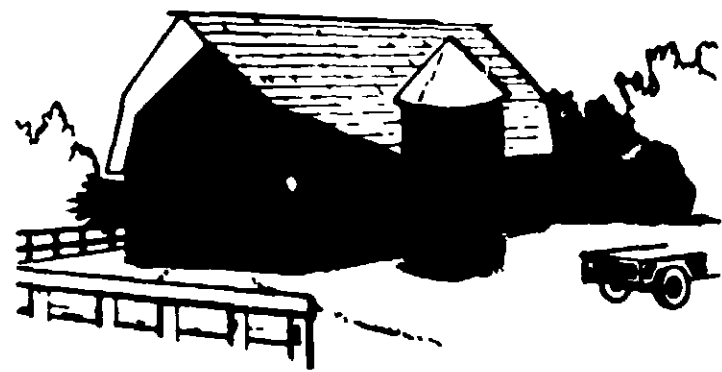
PENTA STAIN

STAINS REPELS PROTECTS

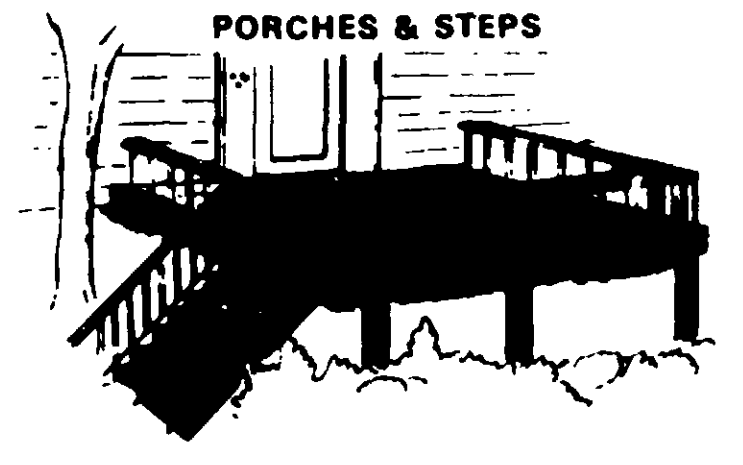
*TRIPLE
ACTION*

NOTICE

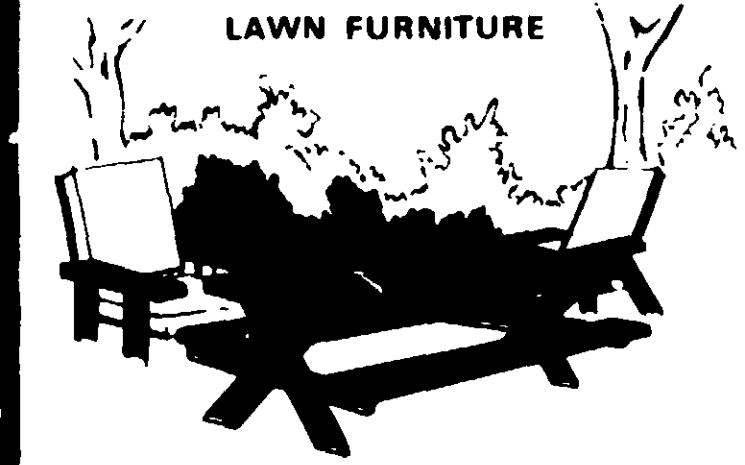
BARNS & OUT BUILDINGS



PORCHES & STEPS



LAWN FURNITURE



501 Aztec Blue

EPA Reg. No. 453-175
EPA EST. 453-MO-1

Active Ingredients:	
Pentachlorophenol	4.50%
Other chlorophenols and related compounds	0.50%
Petroleum solvents	68.53%
Inert Ingredients	26.47%
Total	100.00%

FEN



5137 SOUTHWEST AVENUE
ST LOUIS, MISSOURI 63110

WARNING: KEEP OUT OF REACH OF CHILDREN: See other panel for additional wa
READ "LIMIT OF WARRANTY AND LIABILITY" BEFORE BUYING OR USING. IF SUCH TERMS ARE NOT ACCEPTABLE, RETURN

NET CONTENTS  **GALLON**

READ INSTRUCTIONS CAREFULLY BEFORE USING

DIRECTIONS

This product is formulated to penetrate into the wood, impregnating it with Pentachlorophenol for protection against rot, termites and powder post beetles, as well as coating the wood with water repellents for dimensional control against grain raising, warping and shrinkage, plus imparting a colorful stain to the treated wood. **APPLY IN ONE EASY APPLICATION.**

This product, which is highly penetrating, must be applied only to new or unfinished wood—never on a painted, varnished or lacquered surface. This product will not raise the grain, nor will it show lap or brush marks.

Shake or stir contents of the can thoroughly and apply a liberal coat by brush or spray, particularly at the end grain or cut surfaces where moisture pick up is greatest. To increase the efficiency of the preservative and moisture repellent qualities, a second coat is generally recommended within 24 hours after first application. Wood to be in contact with the soil should have 2 brush or spray coats.

On smooth surfaces, one gallon covers approximately 300 to 350 sq. feet. On rough surfaces, one gallon covers about 200 to 250 sq. feet. Surfaces treated with this product may be varnished or lacquered after 72 hours drying time.

NOTICE

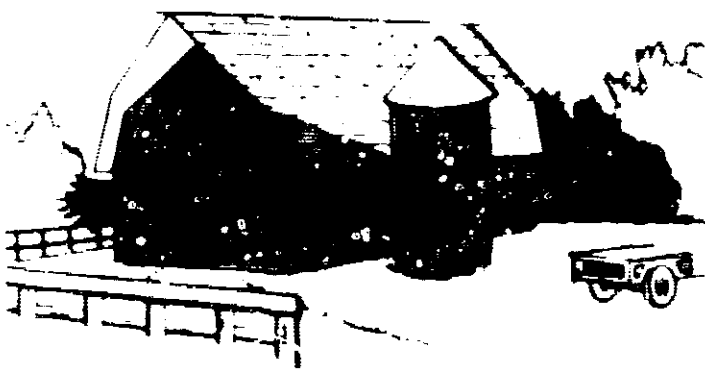
- Avoid contamination of feed or foodstuffs.
- Punch holes in containers and dispose with waste by burying in non-crop lands away from water supplies.
- Do not contaminate water by cleaning equipment or disposal of waste and containers.
- Treated sawdust and other wood wastes should not come in contact with domestic animals, or be used as mulch where it will come in contact with useful living plants.
- Do not use in dairy barns or poultry houses.

PENTACHLOROPHENOL STAIN

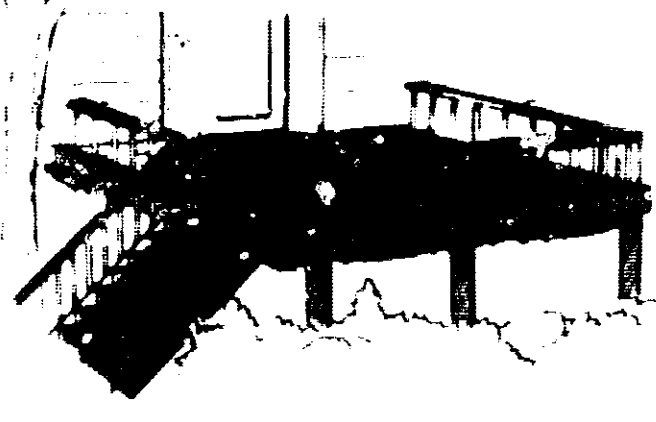
TRIPLE ACTION

STAINS REPELS PROTECTS

BARNS & OUT BUILDINGS



PORCHES & STEPS



LAWN FURNITURE



501 Aztec Blue

EPA Reg. No. 450-175
EPA EST. 460-177-1

Active ingredient: Pentachlorophenol, 5.0%
Other ingredients: Water, 95.0%
Net contents: 1.0 gallon
EPA Reg. No. 450-175
EPA EST. 460-177-1

FENCES



5137 SOUTHWEST AVENUE
ST. LOUIS, MISSOURI 63110

WARNING: KEEP OUT OF REACH OF CHILDREN: See other panel for additional warnings.
HEAD "LIMIT OF WARRANTY AND LIABILITY" BEFORE BUYING OR USING. IF SUCH TERMS ARE NOT ACCEPTABLE, RETURN

NET CONTENTS 1 GALLON

STIR WELL BEFORE USING

WARNING

MAY BE FATAL IF SWALLOWED. HARMFUL IF INHALED OR ABSORBED THROUGH SKIN. CAUSES SKIN IRRITATION. MAY PRODUCE DELAYED DRENTHERMA. BURNS. COMBUSTIBLE.

Do not breathe spray mist. Use only with adequate ventilation. Do not get in eyes, on skin or on clothing. Wash thoroughly after handling. Wear protective clothing and rubber gloves when handling the product. Do not store or use near open flames.

FIRST AID: If swallowed, induce vomiting by forcing down throat or by giving 1-2 glasses of water. Report immediately to a physician. Never give anything by mouth to an unconscious person.

FIRST AID: In case of contact with skin, wash with soap and water. In case of contact with eyes, flush with water and seek medical attention.

NOTE TO PHYSICIANS: This product is a known irritant. It may cause hypotension.

LIMIT OF WARRANTY AND LIABILITY

This company warrants that this material conforms to the chemical description on the label and is reasonably fit for the purposes referred to in the directions for use. This product is sold subject to the understanding that the buyer assumes all risks of use or handling which may result in loss or damage which are beyond the control of the seller, such as fire, lightning, hurricanes, and other causes. The company disclaims any liability for such loss or damage. THE COMPANY MAKES NO WARRANTY OF MERCHANTABILITY OR FITNESS FOR ANY PARTICULAR PURPOSE. THE COMPANY MAKES NO WARRANTY OF ANY KIND, EXPRESS OR IMPLIED, INCLUDING BUT NOT LIMITED TO, THE IMPLIED WARRANTIES OF MERCHANTABILITY AND FITNESS FOR A PARTICULAR PURPOSE.

501 Aztec Blue



WARNING: KEEP OUT OF REACH OF CHILDREN: See other panel for additional warnings
WARRANTY AND LIABILITY: BEFORE BUYING OR USING. IF SUCH TERMS ARE NOT ACCEPTABLE, RETURN AT ONCE UNOPENED.

NET CONTENTS  **GALLON**

WOOD TREATING CHEMICALS DEPT.
KOPPERS COMPANY, INC.