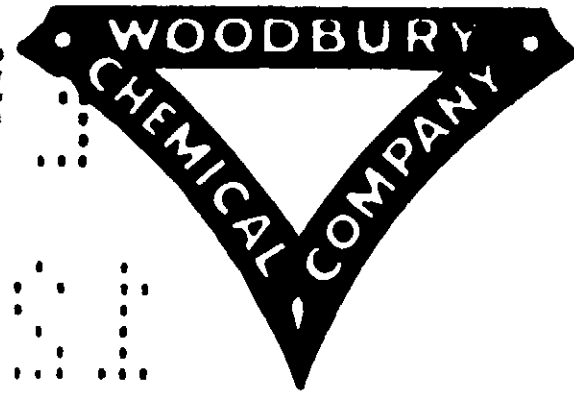


CONTENTS

50 POUNDS



# SEVIN® 10-G GRANULAR INSECTICIDE

ACCEPTED  
Jan 12, 1970  
UNDER THE FEDERAL INSECTICIDE  
FUNGICIDE AND RODENTICIDE ACT  
FOR ECONOMIC POISON REGISTER-  
ED UNDER NO. 4449-399

ACTIVE INGREDIENT:		
Carbaryl (1-naphthyl N-methylcarbamate)*	.....	10.0%
INERT INGREDIENTS:	.....	90%
TOTAL	.....	100.0%

\*Sevin Reg. Trademark of Union Carbide Corporation.

## CAUTION KEEP OUT OF REACH OF CHILDREN

AVOID BREATHING OF DUST.  
AVOID CONTAMINATION OF FEED AND FOODSTUFFS.  
AVOID CONTACT WITH SKIN.  
WASH WITH SOAP AND WATER AFTER EXPOSURE.  
HARMFUL IF SWALLOWED OR INHALED.

AVOID CONTAMINATION OF WATER SUPPLIES, STREAMS OR PONDS.  
NOTE FOR PHYSICIAN: CARBARYL IS A MODERATE, REVERSIBLE, CHOLINESTERASE INHIBITOR. ATROPINE IS ANTIDOTAL.

### OBSERVE THE FOLLOWING USE PRECAUTIONS.

Observe the use limitations given on label for specific crops. Do not apply during bloom when honey bees or other pollinators are active. This product is highly toxic to bees exposed to direct treatment or residues on crops. Protective information may be obtained from your Cooperative Agricultural Extension Service. Avoid drift onto adjoining food and forage crops about to be harvested, or crops in bloom.

Do not apply when weather conditions favor drift of dust from crop areas treated. In order that residues on food or forage crops will not exceed established tolerances, use only at recommended rates, and do not apply closer to harvest than specified.

Consult State Agricultural Experiment Stations for additional information, as the timing, number, and rate of applications needed will vary with local conditions.

## RECOMMENDATIONS

**CORN:** For control of European corn borer in whorls use 15 to 20 lbs. per acre. Direct material directly into whorls of plant. Make one or more applications beginning when borer damage threatens depending on the extent of infestation and the degree of protection desired. Consult your State Agricultural Experiment Station for proper timing of treatments. Do not apply within seven days of harvest.  
**RICE:** (California): Use 20 lbs. per acre for control of tadpole shrimp. Apply to water when pest first appears. Do not apply within 14 days of harvest.

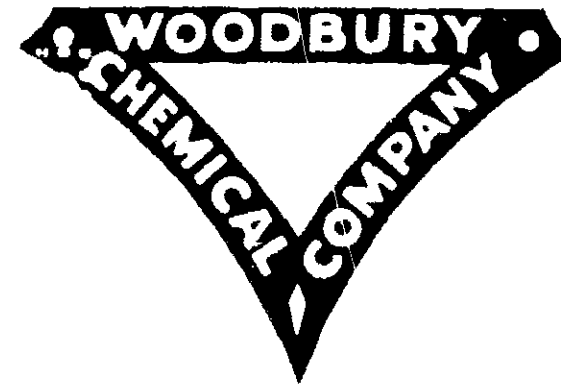
**ORNAMENTAL TURF, LAWNS:** Ants, Earwigs, Fall armyworms, Fleas, Leafhoppers, Millepedes, Mosquitoes, Sod webworm. Use 8 to 12 lbs. per 5,000 sq. ft. of established lawn area. For best results mow grass and apply immediately after rain or watering. Repeat application may be necessary in 2 to 3 weeks. <sup>HOUSES</sup> Keep pets and children off treated area until material is washed into turf.

**LITTER TREATMENT FOR POULTRY INSECT CONTROL:** Northern fowl mite, chicken mite, Lice, Fleas, Red bugs. Use 1 lb. for 80 sq. ft. Use a scoop or hand shaker and scatter by hand. Avoid contamination of nests, eggs, feeding and watering troughs. Do not apply within 7 days of bird slaughter.

NOTICE: Buyer assumes all risk of use, storage or handling of this material not in strict accordance with directions given herewith.  
READ LABEL BEFORE USING — DESTROY EMPTY CONTAINER — BURY OR BURN — STAY OUT OF SMOKE AND FUMES.

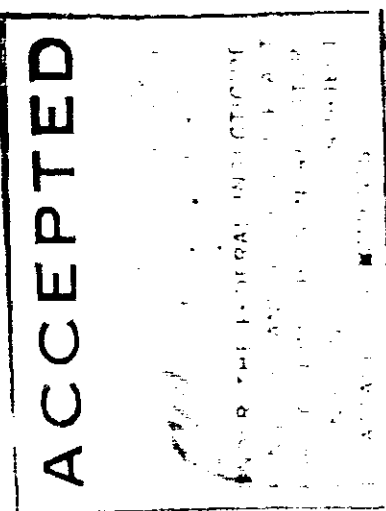
Manufactured for: **WOODBURY CHEMICAL COMPANY** St. Joseph, Mo. 64502;  
Denver, Colo.  
Division of TECHNE CORP.

CONTENTS



50 POUNDS

# SEVIN<sup>TM</sup> 10-G GRANULAR INSECTICIDE



ACTIVE INGREDIENT:	
Carbaryl (1-naphthyl N-methylcarbamate)*	10.0%
INERT INGREDIENTS:	90%
TOTAL	100.0%

**CAUTION**  
 KEEP OUT OF REACH OF CHILDREN  
 AVOID BREATHING OF DUST.  
 AVOID CONTAMINATION OF FEED AND FOODSTUFFS.  
 AVOID CONTACT WITH SKIN.  
 WASH WITH SOAP AND WATER AFTER EXPOSURE.  
 HARMFUL IF SWALLOWED OR INHALED.

AVOID CONTAMINATION OF WATER SUPPLIES, STREAMS OR PONDS.  
 NOTE FOR PHYSICIAN: CARBARYL IS A MODERATE, REVERSIBLE, CHOLINESTERASE INHIBITOR. ATROPINE IS ANTIDOTAL

### OBSERVE THE FOLLOWING USE PRECAUTIONS.

Observe the use limitations given on label for specific crops. Do not apply during bloom when honey bees or other pollinators are active. This product is highly toxic to bees exposed to direct treatment or residues on crops. Protective information may be obtained from your Cooperative Agricultural Extension Service. Avoid drift onto adjoining food and forage crops about to be harvested, or crops in bloom.

Do not apply when weather conditions favor drift of dust from crop areas treated. In order that residues on food or forage crops will not exceed established tolerances, use only at recommended rates, and do not apply closer to harvest than specified.

Consult State Agricultural Experiment Stations for additional information, as the timing, number, and rate of applications needed will vary with local conditions.

### RECOMMENDATIONS

**CORN:** For control of European corn borer in whorls use 15 to 20 lbs. per acre. Direct material directly into whorls of plant. Make one or more applications beginning when borer damage threatens depending on the extent of infestation and the degree of protection desired. Consult your State Agricultural Experiment Station for proper timing of treatments. Do not apply within seven days of harvest.  
**RICE (California):** Use 20 lbs. per acre for control of tadpole shrimp. Apply to water when pest first appears. Do not apply within 14 days of harvest.

**ORNAMENTAL TURF LAWNS:** Ants, Earwigs, Fall armyworms, Fleas, Leathoppers, Millepedes, Mosquitoes, Sod webworm. Use 8 to 12 lbs. per 5,000 sq. ft. of established lawn area. For best results mow grass and apply immediately after rain or watering. Repeat application may be necessary in 2 to 3 weeks. Keep pets and children off treated area until material is washed into turf.

**LITTER TREATMENT FOR POULTRY INSECT CONTROL:** Northern fowl mite, chicken mite, Lice, Fleas, Bed bugs. Use 1 lb. for 80 sq. ft. Use a scoop or hand shaker and scatter by hand. Avoid contamination of nests, eggs, feeding and watering troughs. Do not apply within 7 days of bird slaughter.

NOTICE: Buyer assumes all risk of use, storage or handling of this material not in strict accordance with directions given herewith.  
 READ LABEL BEFORE USING. DESTROY EMPTY CONTAINER - BURY OR BURN - STAY OUT OF SMOKE AND FUMES.

Manufactured by **WOODBURY CHEMICAL COMPANY** St. Joseph, Mo. 64502  
 Denver, Colo.

DIVISION OF TECHNICAL CORP.