

[442-26]

**INGREDIENTS**

|   |        |
|---|--------|
| ACTIVE: Pyrethrins  | 25%    |
| Technical Piperonyl Butoxide*   | 1.00%  |
| Petroleum Distillate  | 8.75%  |
| INERT:  | 90.00% |
| *Equivalent to 5% (butyl carbaryl) (6-propylpiperonyl) Ether and 2% of related compounds. |        |



Non-Toxic to Humans and Pets

# INSECT KILLER

## HOUSE

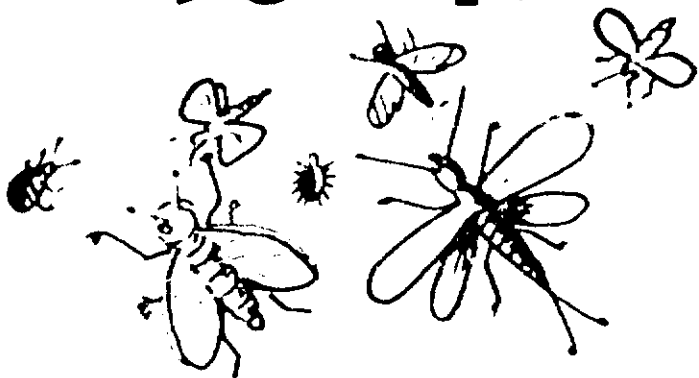
and

## GARDEN

**KILLS BOTH INDOOR AND OUTDOOR INSECTS SEE REVERSE SIDE FOR SPECIFIC INSECTS**

**CAUTION: CONTENTS UNDER PRESSURE. KEEP OUT OF REACH OF CHILDREN.**

See Caution Statement on Back  
U.S.D.A. REGISTRATION NO. 44276  
NET 13 FL. OZ.



|   |
|---|
| <b>CAUTION:</b> Store in cool place (not over 120 F). Do not place on hot surface. Do not puncture or immerse container. Cover or remove fish bowls or bird cages before treatment and for 1 hour after treatment. Cover exposed food and utensils. May stain painted or plastic finishes if sprayed too closely. |
|---|

**KEEP OUT OF THE REACH OF CHILDREN**

**TO OPERATE:** SHAKE BEFORE USING. Remove cap and draw away from jet. Press valve; spray at least 3 feet away from any surface.

**DIRECTIONS:** **HOUSE:** For Flies, Mosquitoes, Gnats and other Flying Insects, use spray into air of closed rooms at night; insects, where possible, from room may be aired 15 minutes after spraying. **INSECTS:** Spray directly on: Roaches, Fleas, Silverfish, Ants and Bedbugs. Also riding places such as cranks, greases, baseboards and under tanks. **HOUSES:** spray floors, carpets and animal quarters. **ANTS:** spray runways. **BEDBUGS:** spray bedframe, springs, mattresses, tufts and seams. **CLOTHES:** Mites; spray closets and storage

containers and garments with attention to folds and seams. Repeat every 30 days.

**GARDEN:** for bugs on animals and perennials, such as evergreens, small ornamental deciduous trees, shrubs and vines. When sprayed on insects, this spray kills sucking insects, such as aphids (plant lice), spotted mites, thrips (exposed) and lace bugs. Kills chewing insects, such as certain caterpillars, Mexican bean beetles, climbing cut worms and Japanese beetles. For best results spray in evening or on a cloudy day when air is still. Use slow sawing motion. Avoid wetting foliage with the spray. Spray with caution on young plants and new growth. DO NOT spray when the temperature exceeds 90 F.

Marketed by **BORON LABORATORIES**

**CLEVELAND, OHIO 44115**

FOR INFORMATION ONLY  
DO NOT USE