

ACCEPTED

SEP 20 1971

UNDER THE FEDERAL INSECTICIDE
 FUNGICIDE AND RODENTICIDE ACT
 FOR ECONOMIC POISON REGISTERED
 UNDER NO. 419-136 SUBJECT
 TO ATTACHED COMMENTS.

FORMULA B

SHAKE BEFORE USING

Remove the cap. Hold can upright. Point valve opening away from face. Press button to release spray.

ROACHES, WATERBUGS, SILVERFISH, CRICKETS: Infested cracks and hiding places should be sprayed thoroughly. Direct spray into moist places, and around bath tubs, sinks, drains, laundry tubs, pipes through floors and walls. Treat areas behind refrigerators, stoves, cabinets and counters. Tensite will not stain woodwork.

ANTS: Spray thoroughly areas around door frames and window sills, also all ant trails. Also, it is desirable to spray around water pipes, heat ducts and baseboards where ants may enter rooms from wall space or partitions.

SPIDERS & SCORPIONS: Spray thoroughly around door frames or window sills, or wherever these insects may enter the house. In wood houses, garages, cabins, outhouses, spray areas until wet where these insects crawl.

CARPET BEETLES: Spray underside of carpets. Also direct spray to baseboard, floors and closet shelves, treating crevices and cracks where insects may be found.

FLIES, MOSQUITOES, GNATS, WASPS, JUNE BUGS, FLYING MOTHS: To help reduce the annoyance from these insects in entering the house, spray the outside surfaces of screens, doors and window frames and other places such as open porch fixtures where these insects gather. REPEAT TREATMENT AS NECESSARY FOR EFFECTIVE CONTROL. SPRAY UNTIL WET ONLY INFESTED SURFACES.

Do not use in commercial food prepara-

Cenol **NEW!**
PRESSURIZED

TENSITE
SELF-SPRAYING

TO CONTROL CRAWLING INSECTS

Kills Roaches, Silverfish, Ants, Crickets, Waterbugs, Carpet Beetles, Spiders, Scorpions, when used as directed.

NET WEIGHT — 1 LB., 1 OZ.

WARNING: Keep out of reach of children. Read caution on back panel.

Inert Ingredient

WARNING

Harmful if swallowed. Avoid inhalation and skin contact.

Repeated or prolonged contact with the skin can cause toxic symptoms. Do not spray on food, dishes or cooking utensils. **Do not spray into the air as a space spray.** Do not spray near open flame or store near heat. Do not smoke when spraying.

Keep out of reach of children.

Antidote:

Internal—Emetic of mustard

External—Wash with soap and water.

WARNING — FLAMMABLE

Do not spray near open flame. Contents under pressure. Do not puncture. Exposure to high temperatures may cause bursting. Keep at room temperature — away from direct sunlight, radiators, stoves, hot water and other heat. Never throw container into fire or incinerator.

DIRECTIONS FOR USE

Hold dispenser upright. Direct spray towards areas to be treated. Point opening away from face when pressing button.

TO KILL SPIDERS: Spray into the areas and around all suspected hiding places. Spray sufficiently to moisten grass or wood surfaces where spiders may hide or breed. This is a contact spray as well as residual. Best results are obtained by spraying directly onto insects wherever possible.

TO KILL ROACHES, WATERBUGS, BROWN DOG TICKS ON THE PREMISES: Thoroughly treat infested cracks and other hiding places. Apply heavily on exposed surfaces where roaches will crawl when they come out of hiding. Repeat treatment when necessary. Do not spray on pets or other animals.

CAUTION: Do not use in edible products areas of food processing plants, restaurants or other areas where food is commercially prepared or processed. Do not use in serving areas while food is exposed.

WARNING: Contents under pressure. Do not puncture. Do not use or store near heat or open flame. Exposure to temperatures above 130°F may cause bursting. Never throw container into fire or incinerator.

CAUTION: Harmful if swallowed. Keep out of reach of children. Contact with skin can cause toxic symptoms. Avoid breathing spray mist. In case of contact with skin, wash with soap and water. Avoid contamination of feed and foodstuffs. Do not spray directly on painted surfaces.

FOR SPOT APPLICATION ONLY.

EPA Reg. No. 421-227

A Product Of
JAMES VARLEY & SONS, INC.
St. Louis, Mo.

BLACK WIDOW SPIDER KILLER

FOR CONTROL OF SPIDERS, ROACHES, WATERBUGS,
BROWN DOG TICKS ON PREMISES.

CONTENTS UNDER PRESSURE

WARNING: KEEP OUT OF REACH OF CHILDREN

(See other precautions on the back panel.)

ACTIVE INGREDIENTS:

40%

Petroleum Distillate	36.00
Technical Chlordane*	2.00
B-butoxy B'-thiocyano diethyl ether	2.00

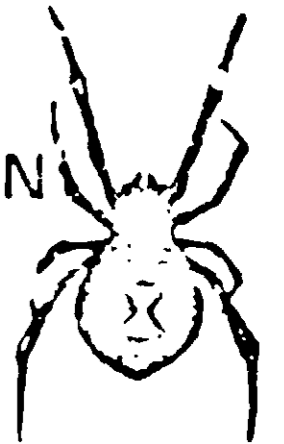
INERT INGREDIENTS:

60%

Dichlorodifluoromethane	30.00
Trichloromonofluoromethane	30.00

*Equivalent to 1.2% Octachloro - 4.7 methano tetrahydroindane and 0.8% related compounds.

Net Weight: 12 ounces



JAMES VARLEY & SONS