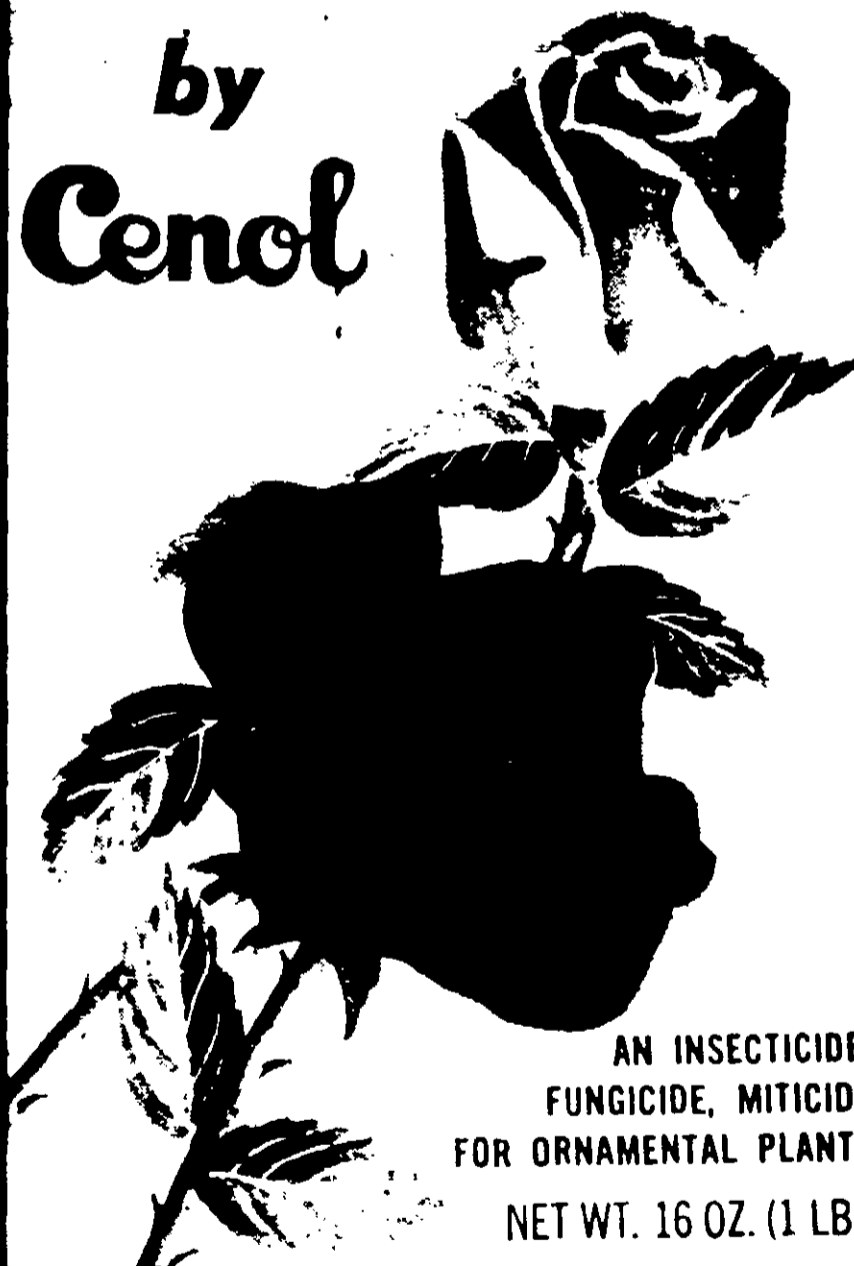


ACCEPTED  
 11-1-71  
 419-99  
 THE FEDERAL BUREAU OF INVESTIGATION  
 RECEIVED  
 SUBJECT  
 COMMENTS

# ROSE SPRAY

by  
**Cenol**



AN INSECTICIDE,  
 FUNGICIDE, MITICIDE  
 FOR ORNAMENTAL PLANTS  
 NET WT. 16 OZ. (1 LB.)

Rose Spray by Cenol is an insecticide containing Pyrethrins, Rotenone, Methoxychlor, Dichloro (Phygon) and Dinitro (Karathane) to kill aphids, mites, exposed thrips, white fly, clover mite, spider mite, caterpillars, lace bugs and climbing cutworms infesting Roses, Evergreens, African Violets, Begonias, Camellias, Chrysanthemums, Delphiniums, English Ivy, Euschia, Kentia Palms and Rubber Plants.

Controls black spot and powdery mildew on Roses.

Avoid spraying seedlings, delicate new growth or sensitive plants as cyclamen, lantana, maiden hair fern or delicate varieties of roses. Do not use on tomatoes, vegetables or other food plants.

**ACTIVE INGREDIENTS BY WEIGHT:**

Pyrethrins	0.020%
Rotenone	0.100%
Other cube extractives	0.200%
N-octyl bicycloheptene dicarboxinide	0.300%
Methoxychlor, technical	0.300%
Dichloro (2,3-dichloro-1,4-naphthoquinone)	0.120%
2-(1-methylheptyl)-4,6-dinitrophenyl crotonate	0.113%
Other nitrophenols and derivatives, chiefly 1-methylheptyl-4,6-dinitro	0.012%
Petroleum distillate	0.115%
<b>INERT INGREDIENTS:</b>	<b>98.720%</b>

Total 100.00%

MGK 264 Insecticide Synergist

2, 2-bis (p-methoxyphenyl)-1, 1, 1-trichloroethane 0.264%; other isomers and reaction products 0.036%.

**DIRECTIONS FOR USE**

Remove cap. Hold container upright. Point opening away from you and press button, keeping dispenser moving at all times.

Hold container 18" from plant and spray at the rate of one second per foot of plant height. Wet both sides of leaves. Apply when new growth appears in spring and repeat at 7 to 10 day intervals, throughout the season. Do not over spray, as burning will result.

**CAUTION:**

Avoid breathing spray mist. The spray from this product may be a skin irritant and sensitizer. Avoid skin contact. In case of skin contact, wash with soap and water. Avoid contamination of foodstuffs.

This product is toxic to fish. Cover goldfish or similar fish pools. Keep out of any body of water. Apply this product as specified on this label.

Contents under pressure. Do not puncture or expose to high temperatures above 130 — may cause bursting. Keep at room temperature—away from direct sunlight, radiators, stoves, hot water and other heat. Never throw container into fire or incinerator. Dispose of container after empty by burying with other wastes.

Distributed by

**CENOL CO., INC., CHICAGO, ILL. 60651**

U.S.D.A. Reg. No. 419-99

**CAUTION**

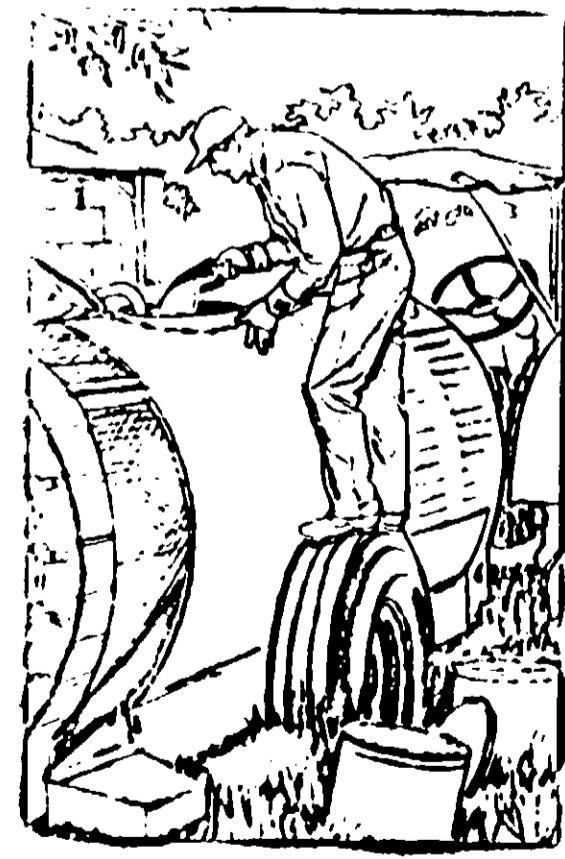
KEEP OUT OF REACH OF CHILDREN.  
 Carefully read precautions on back of can.



**ACCEPTED**  
**NOV 1 1971**  
UNDER THE FEDERAL INSECTICIDE  
FUNGICIDE AND RODENTICIDE ACT  
FOR REGISTRATION UNDER REGISTER  
ED UNDER NO. SUBJECT  
TO ATTACHED COMMENTS.

419-99

# ROHM & HAAS



# KARATHANE LIQUID CONCENTRATE

An Agricultural Fungicide & Miticide    A Liquid Concentrate

Contains 4 lbs. Technical KARATHANE\* per gallon

## ACTIVE INGREDIENTS

Dinitro (1-methyl heptyl) phenyl crotonate ..... 37%

Other nitro phenols and derivatives chiefly  
dinitro (1-methyl heptyl) phenol ..... 11%

INERT INGREDIENTS ..... 52%

100%

U. S. Pat. No. 2,526,660

**Caution:** Avoid skin contact. May cause skin irritation or sensitization. Wash thoroughly after use. Avoid inhalation of mist. Do not take internally. Avoid contamination of foodstuffs and feeds. Inflammable—Keep away from flames.

## DIRECTIONS FOR USE

**GENERAL:** KARATHANE Liquid Concentrate is especially effective for the control of powdery mildew diseases and certain species of mites.

**POWDERY MILDEW CONTROL:** KARATHANE Liquid Concentrate is a specific fungicide especially effective for the control of powdery mildew. Recommended dosage and time of application differ with various crops. For directions see the section under crops applicable to your area.

**MITE CONTROL:** KARATHANE Liquid Concentrate is also an effective miticide and especially useful for control of mites that have become resistant to organic phosphates and other miticides. KARATHANE Liquid Concentrate is an adulticide only and possesses a very short residual, but through effective reduction of mite population it may provide economic mite control for many weeks. When used alone KARATHANE application should be repeated in 7-10 days to kill adults emerging from eggs surviving the first spray. Two sequential applications so timed will reduce the population to a low level. In combination with other miticides, KARATHANE will improve performance by giving excellent initial kill of adult mites. A program of alternating KARATHANE Liquid Concentrate with another miticide may also be used to give overall good mite control while prolonging development of resistance to the other miticide.

The directions given above are of a general nature. For specific details on timing of sprays consult local authorities. Directions are given for single strength sprays. KARATHANE Liquid Concentrate may also be used in concentrate or airblast sprayers. Be sure to adjust dosages accordingly.

**APPLES, PEARS—Powdery mildew:** Use 4 to 6 ounces

KARATHANE Liquid Concentrate to 100 gallons water applying thorough full coverage spray at 500-800 gallons per acre for dilute sprays. Adjust accordingly for concentrate sprayers. Begin applications at delayed dormant to pink stage and continue in every regular spray at 7 to 14-day intervals into the cover sprays until terminal growth or mildew activity is completed. At no time should applications of KARATHANE be more than 14 days apart. Control measures are needed on these crops from the time buds break in the spring or at the first signs of mildew activity. Applications must be continued through the period of terminal growth and new bud formation to reduce the amount of overwintering infection in the buds. Four to eight applications are usually required per season depending on variety, location and disease severity. Thorough coverage is necessary for mildew control. When noticeable mildew growth is evident, add a spreader-sticker to the spray to insure thorough wetting of mildew spores and mycelium. Certain sticker-spreaders will reduce the deposit of KARATHANE on apples and pears. If a sticker-spreader is to be employed with KARATHANE Liquid Concentrate, use TRITON B-1956 at 1 to 2 ounces per 100 gallons of dilute spray.

In the Eastern U. S. 2 oz. KARATHANE Liquid Concentrate per 100 gallons may be used on varieties slightly to moderately susceptible to powdery mildew (such as Delicious, MacIntosh and Stayman) and on susceptible varieties under light infection conditions. Make applications in every regular spray at 5 to 7 day intervals as long as mildew is active or until terminal growth is completed.

**For the control of European red, Clover and Two-spotted mites:** Apply KARATHANE Liquid Concentrate at a rate of 4 to 8 oz. per 100 gallons water, applying thorough full coverage spray at 500-800 gallons per

\* Technical KARATHANE is 78% dinitro (1-methyl heptyl) phenyl crotonate and 22% related reaction products chiefly dinitro (1-methyl heptyl) phenol.

**KARATHANE LIQUID CONCENTRATE — Continued**

acre, in dilute spray. Adjust accordingly for concentrate sprayers. Make initial application on appearance of mites and repeat at 7-10 days.

KARATHANE Liquid Concentrate is believed compatible with most of the common pesticides used on apples and pears. Do not use more than 1/2 pound of 25% wettable parathion with KARATHANE Liquid Concentrate from pink through second cover or apply in separate applications. Other phosphate insecticides such as malathion, Guthion, EPN, demeton (Systox) appear to be compatible with KARATHANE at any time. Do not apply KARATHANE Liquid Concentrate when temperatures will exceed 90-95°F during day. Do not use with oil or oil based pesticides or apply to foliage within 30 days after application of an oil spray.

To avoid residues do not use KARATHANE within 21 days of harvest on apples and pears.

**PEACHES AND APRICOTS**—To control powdery mildew use 4 ounces KARATHANE Liquid Concentrate to 100 gallons water applying full coverage spray. Apply at pink bud, petal fall, shuck fall and early covers. Use wettable sulphur in later applications.

To control European red mite, Clover mite and Two-spotted mite as well as Plum nursery and Peach silver mite: Apply KARATHANE Liquid Concentrate at a rate of 4 oz. per 100 gallons water, applying thorough full coverage spray at 500-800 gallons per acre for dilute sprays. Adjust accordingly for concentrate sprayers. Make initial application on appearance of mites and repeat at 7-10 days.

Do not apply on peaches and apricots later than 45 days before harvest.

**RASPBERRIES**—Powdery mildew and Mites: Use 4-8 ounces of KARATHANE Liquid Concentrate in 100 gallons of water and apply up to 250 gallons per acre in full coverage dilute sprays. Begin when mildew or mites first appear. Repeat at 7-10 days for mite control and repeat at 7-14 days as long as mildew threatens. Do not use within 7 days of harvest.

**STRAWBERRIES**—Powdery mildew: Use 4 oz. KARATHANE Liquid Concentrate in 100 gallons of water and apply up to 300 gallons per acre in full coverage dilute sprays. Begin when mildew first appears (usually when plants first green up in spring) and repeat at 7-14 day intervals as long as disease threatens. Two to six applications may be required per season. Do not use within 21 days of harvest.

For mite control: Apply KARATHANE Liquid Concentrate at a rate of 4-8 oz. per 100 gallons water applying thorough full coverage spray at rates up to 150 gallons per acre. Make initial application on appearance of mites and repeat at 7-10 days.

**GOOSEBERRIES** — (Pacific Northwest) — Powdery mildew: Use 4 oz. KARATHANE Liquid Concentrate in 100 gallons of water and apply up to 300 gallons

per acre in full coverage dilute sprays. Make first application at green tip and repeat at 10-day intervals in pre-bloom, 10% bloom, full bloom and up to 21 days before harvest as long as mildew threatens. Three to five applications may be required per season. Do not use within 21 days of harvest.

**GRAPES**—Powdery mildew and Mites: Use 4-8 ounces of KARATHANE Liquid Concentrate in 100 gallons of water and apply 200-300 gallons per acre depending on the size of the vines and the density of the foliage. Begin applications when mildew first appears (usually during the early stages of foliage growth) and repeat at 10-14 day intervals as long as disease threatens. For mite control only make application on appearance of mites and repeat at 7-10 days. Two to six applications may be required per season. Do not use within 21 days of harvest.

**CANTALOUPE, HONEYDEW MELONS, MUSK-MELONS, PUMPKINS, WATERMELONS, WINTER SQUASH, CUCUMBERS, SUMMER SQUASH**—Powdery mildew: Use 3-4 oz. KARATHANE Liquid Concentrate in 100 gallons water and apply 100-150 gallons per acre. Begin applications when mildew first appears and repeat at 7-10 day intervals as long as disease threatens. Three to ten applications may be required per season depending on the length of the growing season. On cucumbers and summer squash, a maximum of three or four applications would be applied to an individual set of fruit. Do not use within 7 days of harvest. For mite control: Apply KARATHANE Liquid Concentrate at a rate of 4-8 ounces per 100 gallons water in full coverage spray 100-150 gallons per acre.

**ORNAMENTAL TREES, SHRUBS AND ROSES, NURSERY STOCK; APPLES, PEACHES, CHERRIES**—Powdery mildew, Red spider mite, Clover mite: Use 4 oz. per 100 gallons or 1 teaspoonful in 4 gallons. Apply when mildew first appears and repeat at weekly to 10 day intervals as necessary. For mite control only make application on appearance of mites and repeat at 7 to 10 days. If established mildew growth is noted add two ounces TRITON B-1956 per 100 gallons.

**ROSES** — Greenhouse — Powdery mildew, Red spider mite, Clover mite: Use 4 oz. KARATHANE Liquid Concentrate per 100 gallons or 1 teaspoonful in 4 gallons plus a suitable spreader such as TRITON B-1956 in a light misting spray. Use No. 2 1/2 disk nozzle at 100-300 pounds pressure. Begin when mildew first appears and repeat at 5 to 7 day intervals or as necessary employing thorough full coverage. For mite control only make application on appearance of mites and repeat at 7-10 days. Direct spray to underside of leaves. Apply with care when temperatures approach 85°F. Do not apply at temperatures over 90°F.

**KARATHANE LIQUID CONCENTRATE — Continued**

**FLOWERS** — aster, larkspur, begonia, belladonna, dahlia, chrysanthemum, calendula, delphinium, gerbera (Transvaal daisy) hydrangea, African violet (Saintpaulia), snapdragon—Powdery mildew, Red spider mite, Clover mite: Use 4 oz. KARATHANE Liquid Concentrate per 100 gallons or 1 teaspoonful per 4 gallons in greenhouse. Use 4 to 8 ounces per

100 gallons or 1 to 2 teaspoonful in 4 gallons of water for outdoor application plus a suitable spreader such as TRITON B-1956. Begin when mildew first appears employing thorough full coverage and repeat at weekly to 10 day intervals as necessary. For mite control only make initial application on appearance of mites and repeat at 7-10 days.

*Tolerances and limitations for KARATHANE Liquid Concentrate appear below*

## KARATHANE

for powdery mildew and mites\*\*

**FRUITS AND VEGETABLES**

<i>Crop and Disease</i>	<i>Limitation</i>	<i>Tolerances<sup>1</sup></i>
*Almonds (California only)	delayed dormant and jacket stage only	
Apples	21 days	
Apricots	45 days	
Cantaloupes	7 days	
Cucumbers	7 days	
Gooseberries (Pacific Northwest only)	21 days	
Grapes	21 days	
Honeydew melons	7 days	
Muskmelons	7 days	
Non-bearing nursery stock, apples, peaches, cherries	—	
Peaches	45 days	
Pears	21 days	
Pumpkins	7 days	
Raspberries	7 days	
Squash	7 days	
Strawberries	21 days	
Watermelon	7 days	

\* Not on current package label.

Note:

\*\* KARATHANE for mite control

KARATHANE WD applied to apples and pears to control powdery mildew will also suppress European red, clover and two-spotted mites.

KARATHANE LIQUID CONCENTRATE is a more effective miticide. The maximum dosage per acre and timing restrictions listed above apply when KARATHANE LIQUID CONCENTRATE is used for mite control on apples, apricots, grapes, peaches, pears, raspberries, strawberries and cucurbites.

<sup>1</sup>Tolerances have not been established for KARATHANE. Data have been submitted to U.S.D.A. in support of these registrations confirming that the recommended applications do not result in residues on the crops at harvest.