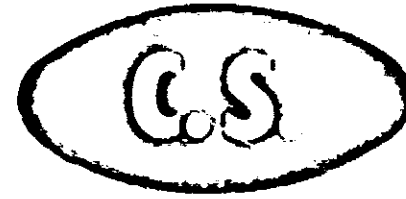


[401-10]

ACCEPTED
6-24-70
401-10



DRIONE® 79700

INSECTICIDE

USDA REG. NO. 401-10

ACTIVE INGREDIENTS:

Pyrethrins	1.00%
*Piperonyl Butoxide, Technical	10.00%
Ammonium Fluosilicate	1.88%
Amorphous Silica Gel	38.12%
Petroleum Hydrocarbons	49.00%
	<hr/>
	100.00%

*Equivalent to 8.0% (butylcarbityl) (6-propylpiperonyl) ether and 2.0% of related compounds.

CAUTION
KEEP OUT OF REACH OF CHILDREN

Avoid Inhalation
Do Not Reuse Container

PACKAGED AND DISTRIBUTED
BY
COMMON SENSE MFG CO INC
1899 Niagara Street
Buffalo, N. Y. 14203

Drione is the registered trademark of FMC Corp.

This product is a finely divided powder which combines the flushing and killing powers of pyrethrins and piperonyl butoxide with the dehydrative principle of thermally attrited hydrogel. It is relatively odorless and non-staining and may be used in accordance with directions in homes, restaurants, stores, hotels, offices, plants and warehouses. When used as directed, it is highly effective in controlling such insects as ants, roaches, silverfish, bed bugs, fleas, lice, ticks and dry wood termites.

DIRECTIONS FOR USE SQUEEZE TO APPLY

To control such running and crawling insect life as ants, cockroaches, silverfish, and fleas in animal quarters, distribute Drione at the rate of 2 ounces per 100 square feet of surface area. Apply a continuous visible film underneath and behind stoves, refrigerators and appliances. Treat on, around and behind moulding, shelving, baseboards, pipe openings, cracks, crevices and other areas where insects may hide. For severe infestations apply Drione behind cabinets and walls, in crawl spaces and attics, at the rate of 16 ounces per 1000 square feet of surface area. Repeat treatment as necessary.

SEWER TREATMENTS: American and Oriental cockroach infestations in sanitary sewers may be treated with approximately 0.3 lb. Drione per manhole. When treating sewers, one manhole per 200 feet of line should be treated. Treatments are made by removing the manhole cover and replacing with a disc of plywood bored to receive the usual flexible hose from portable or truck mounted ventilating equipment. A one pound coffee can will hold about 0.3 lb. of Drione. This amount is introduced into the ventilating air, to be dispersed quickly and thoroughly through the system.

BED BUGS: Take bed apart. Dust into joints and channels. If hollow, such as square or round tubing, see that the interior of framework is well dusted. Mattress should be dusted, especially tufts, folds and edges. Picture frame mouldings and all cracks and crevices in the room should be treated.

DRY WOOD TERMITES: These termites are restricted to certain parts of the country and should not be confused with Subterranean termites. Use an electric or hand-operated rotary duster to distribute Drione through an entry, e.g., crawl hole into the attic and the crawl space of the building. Rate of application is recommended at one (1) pound per 1000 square feet of floor area. All wood surfaces must be covered. All vents and louvres on the windward side to be closed.

FLEAS - Dogs and Cats: Liberally apply powder to the animal, rubbing thoroughly to the skin. Begin with the neck and include the underbody, legs, feet, and the base of the tail. Repeat as necessary. Surfaces of kennels should be dusted at rate of one ounce per 50 square feet. Heavily infested lawns, basements and crawl spaces should be dusted at rate of 16 ounces per 1000 square feet. Repeat as necessary.

NET WT. 2 OZ.