



If breathing has stopped  
If swallowed

In case of contact

CAUTION



POISON - SWALLOWED

POISON - INHALED

POISONOUS TO FISH AND WATER LIFE

USE ONLY WHEN WEARING THE FOLLOWING  
PROTECTIVE EQUIPMENT AND CLOTHING

WORK SAFETY RULES



IF SWALLOWED

IF IN CONTACT WITH SKIN

NOTE: THIS PRODUCT

# RESTRICTED USE PESTICIDE

For retail sale to and use only by Certified Applicators or persons under their direct supervision and only for those uses covered by The Certified Applicator's Certification.

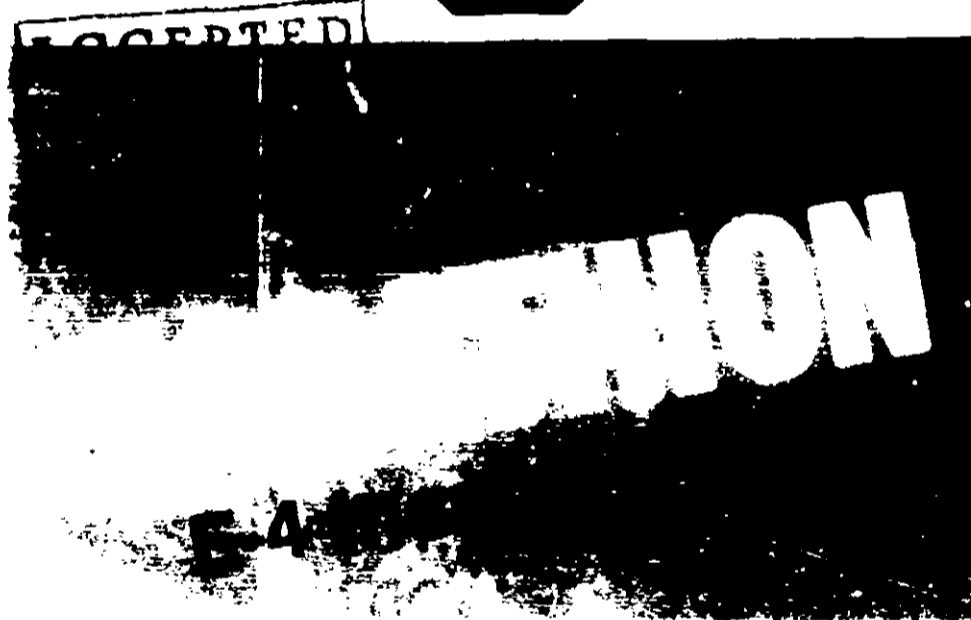
STOP--READ LABEL BEFORE USING!

POISON  
SEE SIDE PANELS  
FOR ANTIDOTE &  
PRECAUTIONS.

JUL 2 8



DANGER  
KEEP OUT  
OF REACH  
OF CHILDREN.



Contains 4 lbs. Parathion Per Gallon  
NOT FOR HOME USE

ACTIVE INGREDIENT

INERT INGREDIENT

NET CONTENTS GAL. ( litres)



Mulch and Fruit ...

by ground to cover 1 acre  
BERRIES (15) LOGANBERRIES  
Mile Use 1 to 2 pints

forms - Cranberry Fruit - Use with  
1 1/2 pints in a minimum of 5 gallons

spring Red Spider Mite - Use 1 pint  
-- Use 1/2 to 1 pint per 100 gallons of  
water per acre with ground ap

if Rother Red Spider Mite - Whately -

by ground to cover 1 acre

Leaf Roller Mexican Bean Beetle Red  
1/2 pints At a rate of 1 to 1 1/2 pints per  
applications at 7 to 10 day intervals as

1/2 pints Do not apply within 21 days  
of 1/4 pint per acre

CAULIFLOWER (7) COLLARDS (10)  
TURNIPS (10) Aphids Armyworms  
Imported Cabbage Worm Thrips

Use 1 to 1.5 pints Do not use  
per acre

Cabbage Looper - Use 1 pint

Use 1 to 2 pints Do not apply

ASH (15) Cucumber Beetle Aphids  
before plants start to vine and use 1

to 1.5 pints Maximum 1.5 pints

per acre

per acre

1/2 pints Repeat weekly as needed  
Armyworms Leafminer - Use 1 pint

1/2 pints

Leaf Beetle Leafhoppers Leafminer  
Plant Bugs Blister Beetles Aphids  
per acre

per acre

per acre

per acre

per acre

per acre

per acre

per acre

per acre

per acre

per acre

per acre

per acre

per acre

per acre

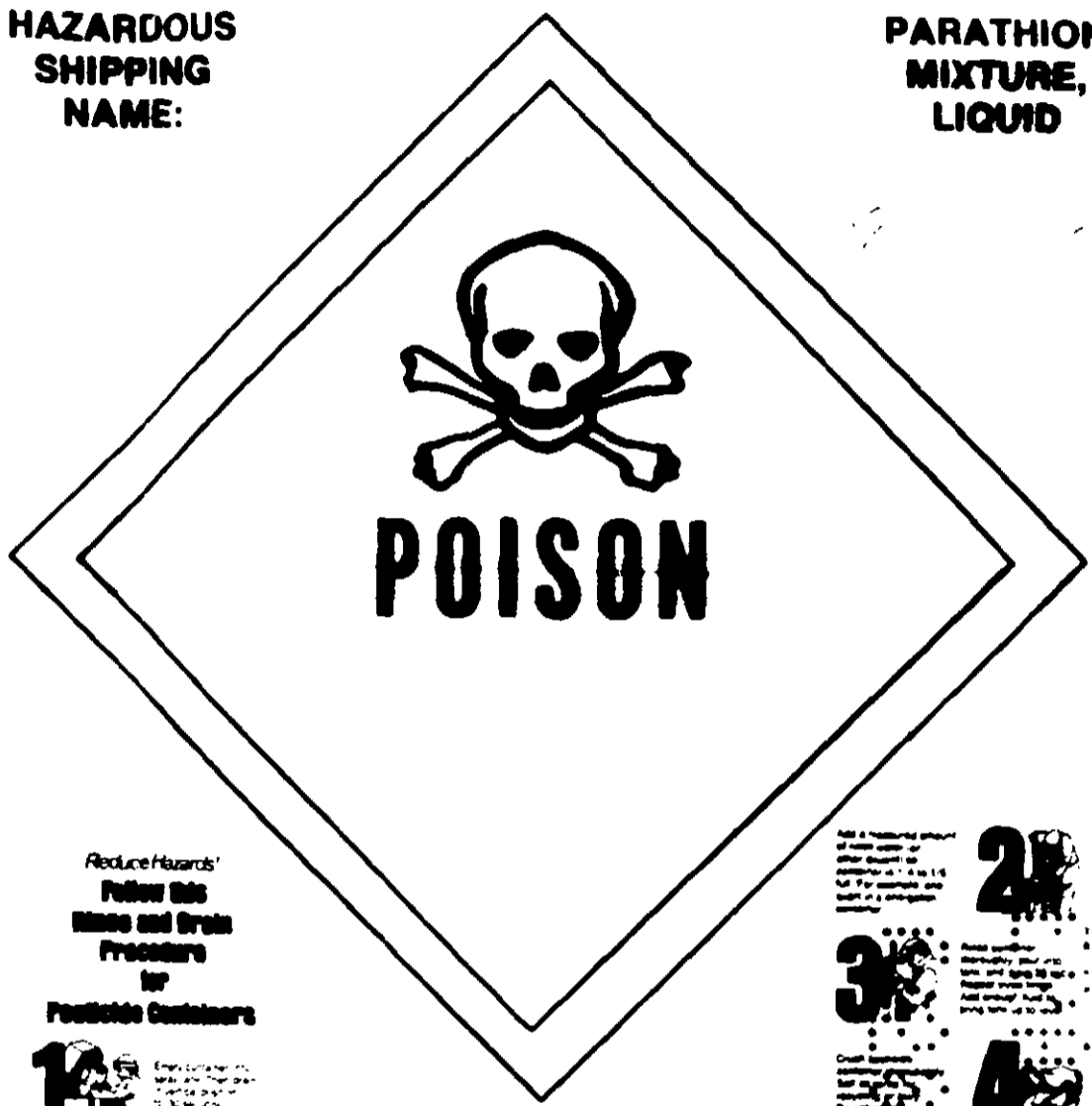
per acre

per acre

per acre

**HAZARDOUS  
SHIPPING  
NAME:**

**PARATHION  
MIXTURE,  
LIQUID**



Reduce Hazards!  
Follow the  
Label and Grain  
Procedures  
for  
Pesticide Containers

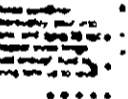


Even containers  
with the grain  
procedures  
are required

Add a measured amount  
of water with the  
other liquid in  
containers with a 1 to 1.5  
ratio. For example, add  
1 pint of water to 1 pint of  
pesticide mixture.



Read and follow  
directions on the  
label and grain label  
before use. Do not  
use if the label is  
missing or illegible.



Do not use in  
open areas where  
people, animals, or  
birds are present.



**ORNAMENTALS**

Use 1/2 to 1 pint per 100 gallons of water per acre with ground application. Do not use in open areas where people, animals, or birds are present.

Apply to the ground in a uniform manner. Do not apply to the foliage of plants. Do not use in open areas where people, animals, or birds are present.

Do not use in open areas where people, animals, or birds are present.