



U.S. ENVIRONMENTAL PROTECTION AGENCY
Office of Pesticide Programs
Registration Division (H7505C)
401 "M" St., S.W.
Washington, D.C. 20460

EPA Reg. Number:
400-170

Date of Issuance:
MAY 19 2005

Term of Issuance:
UnConditional

Name of Pesticide Product:
Casoron 2G

NOTICE OF PESTICIDE:
 Registration
 X Reregistration

(under FIFRA, as amended)

Name and Address of Registrant (include ZIP Code):

Willard F. Cummings
U.S. Registration Manager
Crompton Manufacturing Co.
74 Amity Road
Bethany, Connecticut 06524-3402

Note: Changes in labeling differing in substance from that accepted in connection with this registration must be submitted to and accepted by the Registration Division prior to use of the label in commerce. In any correspondence on this product always refer to the above EPA registration number.

On the basis of information furnished by the registrant, the above named pesticide is hereby registered/reregistered under the Federal Insecticide, Fungicide and Rodenticide Act.

Registration is in no way to be construed as an endorsement or recommendation of this product by the Agency. In order to protect health and the environment, the Administrator, on his motion, may at any time suspend or cancel the registration of a pesticide in accordance with the Act. The acceptance of any name in connection with the registration of a product under this Act is not to be construed as giving the registrant a right to exclusive use of the name or to its use if it has been covered by others.

This product is reregistered in accordance with FIFRA sec. 4(g)(C) provided that you:

Submit/cite all data required for registration/reregistration of your product when the Agency requires all registrants of similar products to submit such data.

Signature of Approving Official:

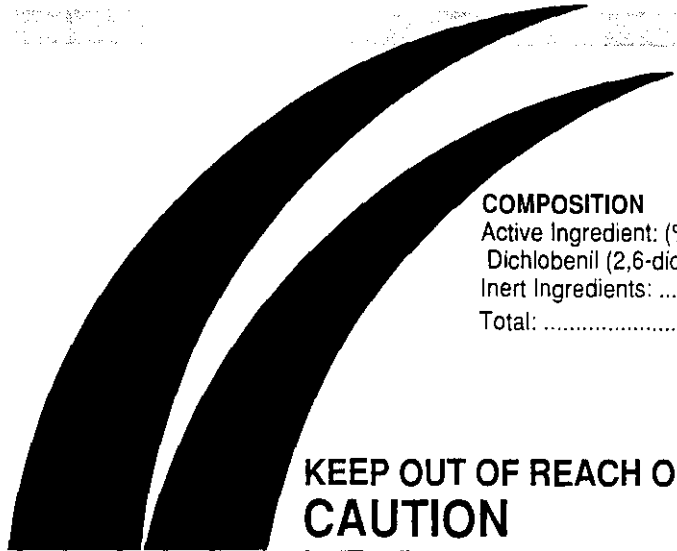
Date:

5-19-05

Casoron® 2G

CONTROLS WEEDS AND GRASSES IN ROSES, EVERGREENS AND WOODY ORNAMENTALS

FORMULA: 2,6-DICHLOROBENZONITRILE



ACCEPTED
MAY 19 2005
Under the Federal Insecticide, Fungicide, and Rodenticide Act, as amended, for the pesticide registered under EPA Reg. No. 400-170

COMPOSITION

Active Ingredient: (% by weight)	
Dichlobenil (2,6-dichlorobenzonitrile)	2.0%
Inert Ingredients:	98.0%
Total:	100.0%

**KEEP OUT OF REACH OF CHILDREN
CAUTION**

Net contents:

FIRST AID	
IF IN EYES	<ul style="list-style-type: none"> • Hold eye open and rinse slowly and gently with water for 15 to 20 minutes. • Remove contact lenses, if present, after the first 5 minutes, then continue rinsing eye. • Call a poison control center or doctor for treatment advice.
IF INHALED	<ul style="list-style-type: none"> • Move person to fresh air. • If person is not breathing, call 911 or an ambulance, then give artificial respiration, preferably by mouth-to-mouth if possible. • Call a poison control center or doctor for further treatment advice.
IF ON SKIN OR CLOTHING	<ul style="list-style-type: none"> • Take off contaminated clothing. • Rinse skin immediately with plenty of water for 15 to 20 minutes. • Call a poison control center or doctor for treatment advice.
IF SWALLOWED	<ul style="list-style-type: none"> • Call a poison control center or doctor immediately for treatment advice. • Have person sip a glass of water if able to swallow. • Do not induce vomiting unless told to do so by the poison control center or doctor. • Do not give anything by mouth to an unconscious person.
EMERGENCY ASSISTANCE: Have the product container or label with you when calling a poison control center or doctor, or going for treatment.	
CROMPTON EMERGENCY PHONE	800-292-5898
SAFETY DATA AND INFORMATION	203-573-3303
TRANSPORTATION EMERGENCY (CHEMTREC)	800-424-9300



Crompton Manufacturing
Company, Inc.
Middlebury, CT 06749
EPA REG. NO. 400-170
EPA EST. NO.
008CM/050803

Crompton® and Uniroyal Chemical®
are Registered Trademarks of a
subsidiary of Crompton Corporation

**PRECAUTIONARY STATEMENTS
HAZARDS TO HUMANS AND DOMESTIC ANIMALS
CAUTION**

Causes moderate eye irritation. Avoid contact with eyes or clothing. Avoid breathing of dust. Prolonged or repeated contact may cause allergic reaction in some individuals.

PERSONAL PROTECTIVE EQUIPMENT

Applicators and Other Handlers Must Wear: Coveralls; chemical resistant gloves made of waterproof materials such as butyl rubber ≥ 14 mils, natural rubber ≥ 14 mils, neoprene rubber ≥ 14 mils, or nitrile rubber ≥ 14 mils; shoes plus socks.

Follow manufacturer's instructions for cleaning/maintaining PPE. If there are no such instructions for washable PPE, use detergent and hot water. Keep and wash PPE separately from other laundry.

USER SAFETY RECOMMENDATIONS

Users should:

- Wash hands before eating, drinking, chewing gum, using tobacco, or using the toilet.
- Remove clothing immediately if pesticide gets inside. Then wash thoroughly and put on clean clothing.
- Remove PPE immediately after handling this product. Wash the outside of the gloves before removing. As soon as possible, wash thoroughly and change into clean clothing.

ENVIRONMENTAL HAZARDS

Do not apply directly to water, or to areas where surface water is present or to intertidal areas below the mean high water mark. Do not contaminate water when disposing of equipment washwaters. Cover, collect, or incorporate granules spilled on the soil surface.

DIRECTIONS FOR USE

It is a violation of Federal law to use this product in a manner inconsistent with its labeling.

Do not apply this product in a way that will contact any person or pet, either directly or through drift. Only protected handlers may be in the area during application. Keep people and pets out of the area during application. Immediately after application, thoroughly water-in the granules. For any requirements specific to your State or Tribe, consult the agency responsible for pesticide regulation.

Do not apply this product by backpack application.

Do not allow persons or pets to enter treated area until granules are thoroughly watered in and soil has dried.

AGRICULTURAL USE REQUIREMENTS

Use this product only in accordance with its labeling and with the Worker Protection Standard, 40 CFR 170. This Standard contains requirements for the protection of agricultural workers on farms, forests, nurseries, and greenhouses, and handlers of agricultural pesticides. It contains requirements for training, decontamination, notification, and emergency assistance. It also contains specific instructions and exceptions pertaining to the statements on this label about personal protective equipment (PPE), and restricted-entry interval. The requirements in this box only apply to uses of this product that are covered by the Worker Protection Standard.

Do not enter or allow worker entry into treated areas during the restricted entry interval (REI) of 12 hours.

PPE required for early entry to treated areas that is permitted under the Worker Protection Standard and that involves contact with anything that has been treated, such as plants, soil, or water, is:

- coveralls
- chemical resistant gloves made of waterproof materials such as butyl rubber ≥ 14 mils, natural rubber ≥ 14 mils, neoprene rubber ≥ 14 mils, or nitrile rubber ≥ 14 mils
- shoes plus socks

NON-AGRICULTURAL USE REQUIREMENTS

The requirements in this box apply to uses of this product that are NOT within the scope of the Worker Protection Standard for agricultural pesticides (40 CFR Part 170). The WPS applies when this product is used to produce agricultural plants on farms, forests, nurseries, or greenhouses.

GENERAL INFORMATION

This chemical has properties and characteristics associated with chemicals detected in ground-water. The use of this chemical in areas where soils are permeable, particularly where the water table is shallow may result in ground-water contamination.

CASORON 2G will control annual and certain perennial grassy and broadleaved weeds around established ornamental trees and shrubs, fruit trees, nut trees and berries listed on this label, and in non-crop areas. A single application, made as directed, is generally enough to give season-long control.

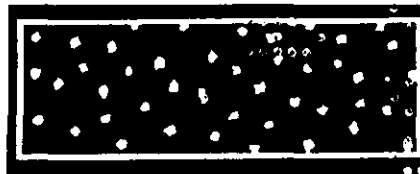
WEEDS CONTROLLED

When used as directed, CASORON 2G will control annual and perennial weeds such as, but not limited to:

Annual Bluegrass	Foxtail	Redroot Pigweed
Artemisia	Goosefoot	Rosarypea
Bluegrass	Groundsel	Russian Knapweed
Bull Thistle	Henbit	Russian Thistle
Camphorweed	Horsetail	Shepherdspurse
Canada Thistle	Jerusalem-oak	Smartweed
Carpetweed	Goosefoot	Smooth Brome
Chickweed	Knotweed	Spanishneedles
Citronmelon	Leafy Spurge	Spurge
Coffeeweed	Lambsquarter	Stranglervine
Crabgrass	Maypop	Teaweed
Cudweed	Passionflower	Texas Panicum
Curly Dock	Natalgrass	Timothy
Dandelion	Orchardgrass	Wild Artichoke
Dogfennel	Pepperweed	Wild Carrot
Evening Primrose	Pineappleweed	Wild Mustard
Falsedandelion	Plantain	Wild Radish
Fescue	Purslane	Witchgrass
Fiddleneck	Quackgrass	Yellow Rocket
Field Morning Glory	Ragweed	Yellow Woodsorrel
Florida Pusley	Red Deadnettle	

APPLICATION NOTES

1. Remove existing weeds.
2. Thoroughly work and smooth the area to be treated.
3. Carefully measure the area to be treated and determine the number of square feet.
4. If area to be treated is large, it should be divided into smaller sections, and each treated individually.
5. Shake CASORON 2G uniformly over the soil area to be treated. More accurate and uniform application can be obtained by applying one-half the required material over the entire treatment area and then repeating the application with the remaining material. Use the diagram below as a guide for proper application rate and uniformity of distribution of the granules.



6. After application is complete, sprinkle lightly to moisten the soil $\frac{1}{4}$ to $\frac{1}{2}$ inch deep. Do not flood; avoid puddling and washing.
7. Avoid disturbing soil in the treated area as long as weed control is being maintained.

FOR ANNUAL WEED CONTROL: Apply in early spring before weeds emerge and after removing existing weeds.

FOR PERENNIAL WEED CONTROL: Apply anytime between late fall (after a killing frost) and mid-winter.

USE AND RATE RECOMMENDATIONS

USE AND RATE RESTRICTIONS

Use only on the ornamental plants listed on this label. Do not apply to transplant or cutting beds or to newly set transplants, and do not seed or transplant into treated areas. **DO NOT USE IN GREENHOUSES OR ENCLOSED AREAS.**

Do not use on extremely light, sandy soils. Do not apply to sloping areas as run-off may occur and result in injury to lawns and other plants in adjacent areas.

Do not exceed recommended rates as injury may occur.

Avoid applications which will allow CASORON 2G to lodge in the foliage of plants, particularly coniferous species. Do not allow CASORON 2G granules to accumulate and be in contact with trunks at or below the soil line.

Do not plant rotational crops, on which dichlobenil is not registered, in treated soil within one (1) year after application.

This chemical has properties and characteristics associated with chemicals detected in ground-water. The use of this chemical in areas where soils are permeable, particularly where the water table is shallow may result in ground-water contamination.

WOODY ORNAMENTALS

CASORON 2G is to be applied only to established woody plants - those which have been planted for at least four months. CASORON 2G may be used for weed control under and around the following plants:

Amur Corktree	Filbert	Nandina
Arbor Vitae	Flowering Almond	Oak
Ash	Flowering Quince	Osmanthus
Azalea ¹	Forsythia	(Holly-olive)
Barberry	Gardenia	Pachistima
Beauty Bush	Goldenraintree	Pecan
Birch	Hackberry	Photinia
Boxelder	Heather	Pittosporum
Boxwood	Holly ²	Poplar
Camellia	Honeysuckle	Privet
Caragana	Ivy (Hedera helix)	Pyracantha
Cleyera japonica	Juniper	Rhododendron
Cotoneaster	Kinnikinnick	Rockrose
Cottonwood	Laurel	Rose
Crabapple	Leucothoe	Russian Olive
Deutzia	Lilac	Spirea
Dogwood	Linden	Squawcarpet
Eastern Red Cedar	Locust	Weigela
Elm	Magnolia	Willow
Elwood Cypress	Maple	Yew (Taxus)
English Walnut	Mock Orange	
Euonymus	Mountain Ash	

¹Kurume, Mollis, hardy hybrid types and hardy native Azalea species only.

²Except Ilex crenata, I. rotunda, I. vomitoria.

For annual weed control, apply at a rate of 2 level tablespoons ($\frac{1}{4}$ oz.) per 10 sq. ft. of area.

For heavy infestations and perennial weed control, apply 3 level tablespoons ($\frac{1}{2}$ oz.) per 10 sq. ft. of area.

FRUIT TREES, NUTS, GRAPES AND BERRIES

Apply only to established plants which have been planted for at least four months. Do not apply within 3 months prior to or following grafting or budding of root stocks or planting of new grafts. Wait 30 days after making application before harvesting stone fruits or nuts.

A. Apple, Blueberry, Cherry, Grape, Pear, Filbert:

For annual weed control apply at a rate of 2 level tablespoons ($\frac{1}{4}$ oz.) per 10 sq. ft. of area.

For heavy infestations and perennial weed control, apply 3 level tablespoons ($\frac{1}{2}$ oz.) per 10 sq. ft. of area.

B. Blackberry and Raspberry:

Make application before new shoots emerge in the spring. Apply at a rate of 2 level tablespoons ($\frac{1}{4}$ oz.) per 10 sq. ft. of area.

NON-CROP AREAS

CASORON 2G may be used to control annual and perennial weeds in outdoor non-crop areas which need to be free of vegetation, such as around buildings, fences and other structures. Apply 2 to 3 level tablespoons ($\frac{1}{4}$ oz. to $\frac{1}{2}$ oz.) per 10 sq. ft. of area.

STORAGE AND DISPOSAL

Do not contaminate water, food or feed by storage or disposal.

PESTICIDE STORAGE: Store in a dry location and keep container tightly closed. Do not store with propagative structures such as seed, bulbs, tubers, nursery stock, etc., or with food or feed products.

CONTAINER DISPOSAL: Do not reuse empty container. Securely wrap original container in several layers of newspaper and discard in trash.

IMPORTANT NOTICE—Seller warrants that this product conforms to its chemical description and is reasonably fit for the purposes stated on the label when used in accordance with the directions and instructions specified on the label under normal conditions of use, but neither this warranty nor any other warranty of merchantability or fitness for a particular purpose, express or implied, extends to the use of this product, contrary to label instructions, or under abnormal conditions, or under conditions not reasonably foreseeable to seller, and buyer assumes the risk of any such use.

® CASORON is a Registered Trademark of Crompton Corporation
© Copyright 2003, Crompton Corporation