

PM 2.5 2002 4/14

1300 12/4

DUPONT TELAR® HERBICIDE

DISPERSIBLE GRANULE

ACTIVE INGREDIENT	BY WEIGHT
Chlorsulfuron	
2-Chloro-N-[(4-methoxy-6-methyl-1,3,5-triazin-2-yl)-aminocarbonyl] benzenesulfonamide.....	75%
INERT INGREDIENTS.....	25%
	TOTAL 100%

EPA Reg. No. 352-404

U.S. Pat. 4,127,405

KEEP OUT OF REACH OF CHILDREN

CAUTION

**PRECAUTIONARY STATEMENTS
HAZARDS TO HUMANS AND DOMESTIC ANIMALS**

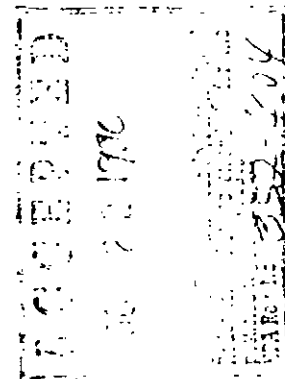
CAUTION! MAY IRRITATE EYES, NOSE, THROAT AND SKIN.

Avoid breathing dust or spray mist. Avoid contact with skin, eyes and clothing.

In case of contact with eyes, immediately flush with plenty of water. Get medical attention if irritation persists.

Wash thoroughly after handling. Remove and wash contaminated clothing before reuse.

For medical emergencies involving this product, call toll free 1-800-441-3637.



ENVIRONMENTAL HAZARDS

Do not apply directly to any body of water. Do not contaminate water by cleaning of equipment or disposal of wastes.

IMPORTANT

DO NOT USE ON FOOD OR FEED CROPS. Injury to or loss of desirable trees or other plants may result from failure to observe the following: Do not apply "Telar" (except as recommended), or drain or flush equipment on or near desirable trees or other plants, or on areas where their roots may extend or in locations where the chemical may be washed or moved into contact with their roots

Do not use on lawns, walks, driveways, tennis courts or similar areas. Keep from contact with fertilizers, insecticides, fungicides and seeds

Do not treat powdery, dry soil and light, sandy soils when there is little likelihood of rainfall soon after treatment, in areas where sensitive crops are grown, do not treat before soil has been settled by rain as off-target movement may occur. Do not apply to impervious substrates such as paved or highly compacted surfaces nor to frozen ground as off-target movement will occur.

Do not apply in or on irrigation ditches or canals including their outer banks.

Do not apply to any body of water. Do not apply where runoff water may flow onto agricultural land, as injury to crops may result. Do not apply "Telar" during periods of intense rainfall or to soils saturated with water as off-target movement may occur

Do not apply this product through any type of irrigation system

Do not allow spray to drift onto adjacent crops or other desirable plants or trees as injury may occur

Following a "Telar" application, do not use sprayer for application to crops. This is extremely important, as low rates of "Telar" can kill or severely injure most crops (except small grains).

Do not use this product in the following counties of Colorado: Saguache, Rio Grande, Alamosa, Costilla, and Conejos

GENERAL INFORMATION

DuPont "Telar" Herbicide is a dispersible granule to be mixed in water and applied as a spray for control of many broadleaf weeds on non-cropland. It is noncorrosive, nonflammable, nonvolatile and does not freeze.

"Telar" may be applied preemergence or postemergence to weeds; best results are obtained if application is made before or during early stages of weed growth. "Telar" should be used during seasons when rainfall occurs as moisture is required to move "Telar" into the root zone of weeds before they develop an established root system. Preemergence treatments control or suppress weeds through root uptake while postemergence works through root uptake and foliar uptake. Under limited rainfall conditions, "Telar" may not provide satisfactory control of hard-to-kill perennials and annuals.

"Telar" is absorbed by both roots and foliage of weeds, resulting in visual effects progressing from growth inhibition to reddish-purple coloration, chlorosis, necrosis, vein discoloration and death of terminals. Initial effects are usually seen 2 or 3 weeks following application; however, the final effects are evident at about 4 to 6 weeks after application.

Warm, moist conditions following treatment promote the activity of "Telar" while cold, dry conditions delay the activity of "Telar".

Weeds hardened off by cold weather or drought stress may not be fully controlled.

Degree of control and duration of effect depend on rate used, weed spectrum, weed size, growing conditions at and following time of treatment, soil pH, precipitation, and soil organic matter.

Following use of "Telar", some naturally-occurring biotypes* of certain weeds listed on this label may not be effectively controlled by this product.

To delay the occurrence of resistant biotypes, use "Telar" in tank mixes and/or sequential treatments with other registered herbicides effective on the same broadleaf weed species. Do not let weed escapes go to seed; time postemergence treatments before seed formation. Respray problem areas in a timely and effective manner using a broadleaf herbicide having a different mode of action**.

* Biotypes are naturally-occurring individuals of the species which have a slightly different genetic makeup. Resistant biotypes may look exactly the same as susceptible biotypes. Herbicide resistant biotypes are able to survive a use rate several times higher than needed to control susceptible biotypes.

** Mode of action is the chemical interaction that interrupts a biological process necessary for plant growth and development.

Consult your supplier, applicator, consultant, appropriate state agricultural extension service representative or your local Du Pont representatives for specific recommendations.

DIRECTIONS FOR USE

It is a violation of federal law to use this product in a manner inconsistent with its labeling.

"Telar" Herbicide should be used only in accordance with recommendations on this label or in separate published Du Pont recommendations available through local suppliers.

Du Pont will not be responsible for losses or damages resulting from the use of this product in any manner not specifically recommended by Du Pont. User assumes all risks associated with such nonrecommended use.

Du Pont "Telar" Herbicide is recommended for preemergence and postemergence control of many broadleaf weeds on noncropland areas. For best results, apply postemergence to young, actively growing weeds (less than 2" tall or 2" across) at any time of the year, except when ground is frozen.

Treated soils should be left undisturbed to reduce the potential for "Telar" movement by soil erosion due to wind or water. Injury to crops may occur when treated soil is blown, washed or moved onto land used to produce crops.

Rate selection is based on weed species, weed size and soil texture. Use the higher rates on established plants and on fine textured soils and lower rates on smaller weeds and coarse textured soils.

For tank mixes, use the most restrictive limitations from labeling of both products.

NON-CROP (INDUSTRIAL) WEED CONTROL

"Telar" is recommended for use for weed control on noncrop, industrial sites such as airports, military installations, fence rows, roadsides and associated rights-of-way, lumberyards, petroleum tank farms, pipeline and utility rights-of-way, pumping installations, railroads, storage areas, plant sites and other similar areas including governmental and private lands.

When applied at lower dosage rates (as listed below), "Telar" provides short term control of weeds listed; usage at higher rates increases length and degree of weed control. Combinations with other herbicides increases the spectrum of weeds controlled and bare ground objectives can be achieved with higher rates of "Telar" plus residual type companion herbicides.

In states of Montana, North Dakota and South Dakota, "Telar" is for use only on railroad rights-of-way.

Apply "Telar" in 10 to 40 gals water at 1/4 to 3 oz per acre per year to control many annual, biennial and perennial broadleaf weeds in non-cropland areas. The addition of a surfactant at 1 qt./100 gals water for postemergence applications is recommended to enhance activity. For handgun application, mix 1 oz "Telar" per 100 gals water and apply up to 200 gals spray mix per acre including surfactant as described above.

Since the degree of control and duration of effect will vary with the amount of chemical applied, soil texture, soil pH, soil organic matter, weed size, rainfall and winter conditions, it is suggested that users limit their first use to small areas.

WEEDS CONTROLLED AND USE RATES

1/4 to 1/2 oz per Acre

Annual sowthistle	London rocket
Blue mustard	Mayweed
Common chickweed	Mine's lettuce
Common speedwell	Pineapple-weed
Conical catchfly	Prostrate pigweed
Fiddleneck (tarweed)	Redroot pigweed
Field pennycress	Shepherd's-purse
Flaxweed*	Smooth pigweed
Hempnettle	Treadle mustard
Herbit	Tumble mustard (firm type)
Lixweed	Wild mustard

WEEDS CONTROLLED AND USE RATES (Continued)

1/2 to 1 oz per Acre

Bouncingbet	Goldenrod
Bur beakchervil	Groundsel
Buttercup	Musk thistle
Canada thistle *†	Sweet clover*
Common lambsquarters	Tumble mustard
Common sunflower	Turkey mullein*
Common speedwell*	Whiteweed (hoary cross)†
Dandelion*	Wild parsnip

* Partial control only.

† Prebloom to bloom and fall rosette are recommended timings.

Surfactant is required at 1 qt/100 gallons water.

1 to 3 ozs per Acre

Annual ryegrass (Lolium spp)*	Flixweed
Aster	Foxtail (Setaria spp)*
Bedstraw	Horsetail (Equisetum spp)
Black mustard	Pepperweed (perennial)
Bull thistle	Poison-hemlock
Burclover	Prostrate knotweed*
Common cinquefoil	Puncturevine
Common mallow	Red clover
Common mullein	Russian knapweed†
Common ragweed*	Scotch thistle
Common tansy	Scouringrush (Equisetum spp)
Common yarrow	Tansymustard
Corn spurry	White clover
Cow cockle	Wild carrot
Curly dock	Wild garlic/wild onion
Dyer's woad	Yellow starthistle*

* Partial control only.

† Prebloom to bloom and fall rosette are recommended timings.

Surfactant is required at 1 to 2 qts/100 gallons water.

TANK MIXTURES WITH OTHER HERBICIDES

For broader spectrum and improved preemergence to early postemergence weed control, tank mix "Telar" with "Karmex" DF, "Krovar" I DF, dicamba, 2,4-D or glyphosate.

Do not tank mix "Telar" with Du Pont "Hyvar" XL Herbicide.

SPECIAL WEED PROBLEMS

Kochia, Russian Thistle and Prickly Lettuce: Since these weeds have biotypes resistance to "Telar", tank mixture combinations should be used involving herbicides with different modes of action such as "Karmex" DF, "Hyvar" X, "Krovar" I DF. Where resistance is known, weeds should not be allowed to form mature seed but should be treated postemergence with herbicides registered for control of these weeds such as 2,4-D and dicamba.

Turf (Industrial, Unimproved Only): "Telar" is recommended for use on unimproved industrial turf, on roadsides, and on other non-ropland areas where bahiagrass, bermudagrass, bluegrass, fescue, wheatgrass and smooth brome are well established, and desired as ground covers. Apply "Telar" at the rate of 1/4 to 1 oz per acre per year to bahiagrass, bermudagrass, bluegrass and wheatgrass and at the rate of 1/4 to 1/2 oz per acre per year to fescue and smooth brome. The higher rates and/or

the addition of surfactant at 1 qt/100 gal's water may result in temporary chlorosis of desirable grasses; application of "Telar" may also suppress grass growth and inhibit grass seedhead formation. Desirable grasses should be well established at time of application or top kill and stand reduction may occur. For best results, treat turf at green-up and prior to formation of seed heads (boots). "Telar" controls weeds listed at appropriate rates under NON-CROP (INDUSTRIAL) WEED CONTROL.

For growth suppression and seedhead inhibition ("chemical mowing") in mixed established stands of fescue/bluegrass, apply 1/4 oz "Telar" plus 1/4 to 1/2 pt "Embark" 2-S[1] per acre. Time treatment to green-up until seedhead appearance.

In the Pacific Northwest for growth suppression of fescue, annual bluegrass, perennial ryegrass, smooth bromegrass, orchardgrass and reed canarygrass, apply 1/2 oz "Telar" plus 1/2 to 1 pt. "Embark" 2-S per acre during the active vegetative growth stages of turf. Addition of a non-ionic surfactant at 1/4% by volume (1 quart/100 gallons) will improve performance, but may temporarily increase chlorosis of desirable grasses.

Note: Do not apply "Telar" or "Telar" plus "Embark" to turf that is under stress from drought, insects, disease, cold temperatures or poor fertility, as injury may result. Do not apply to turf less than 1 year old. Do not use "Telar" plus "Embark" on bahiagrass turf, as severe injury will result. Do not exceed 1/2 ounce "Telar" per acre within a 12-month period.

[1] Registered trademark 3M Corporation

For weed control established in bentgrasses, blue grama, bluestems (big, little, plains, sand, ww spar), bromegrasses (meadow, smooth), buffalograss, galleta, green needlegrass, green sprangletop, indiagrass, indian ricegrass, kleingrass, lovegrasses (sand, weeping), orchardgrass, prairie sandreed, sand dropseed, sheep fescue, sideoats grams, switchgrass, wheatgrasses (crested, intermediate pubescent, slender, streambank, tall thickspike, western) and wildrye grasses (beardless, russian), apply 1/2 oz "Telar" in a minimum of 10 gals water per acre; add 0.25% surfactant by volume where emerged seedling weeds are present. Where new seeding is desired, planting in cultivated areas is permissible 6 months after treatment. Treatment controls or suppresses weeds as shown under Weeds Controlled.

SPRAY PREPARATION: Fill the spray tank half full of water and with agitator running, add the proper amount of "Telar". Finish adding the required amount of water. Continuous agitation is required to keep the product in suspension. For postemergence applications, a nonionic surfactant of at least 90% active ingredient may be added to improve wetting and/or contact activity. To minimize drift, a drift control agent may be added at the recommended label rate. "Telar" spray preparations may degrade in acidic solutions if not used in 24 hours; they are stable in alkaline solutions. Thoroughly reagituate before using.

APPLICATION TECHNIQUE: Before spraying, calibrate the equipment to determine the quantity of water necessary to uniformly cover the vegetation and soil in a measured area to be treated. Use a sprayer properly calibrated to a constant speed of travel and rate of delivery. Avoid overlapping and shut off spray booms while starting, turning, slowing or stopping when spraying industrial turf as injury to the desired species may result. Extreme care must be taken to prevent drift.

"Telar" may also be applied by handgun.

SPRAY VOLUME: Apply "Telar" with ground equipment. Select a spray volume that will assure thorough coverage and uniform spray pattern. Do not use less than 10 gallons of water per acre. Spray volumes of 20 to 40 gallons per acre are preferred. Spray pressure of 25 to 35 psi are adequate.

For handgun application, use 100 to 300 gals spray per acre.

AGITATION: Use mechanical or by pass agitation to thoroughly mix the spray solution. After initial mixing, do not use excessive agitation when using a surfactant as foaming problems may result. To avoid foaming problems, use anti-foam agents.

SPRAYER CLEANUP: Immediately after spraying thoroughly remove all traces of "Telar" from mixing and spray equipment as follows

1. Drain tank; rinse interior surfaces of tank; then flush tank, boom and hoses with clean water for a minimum of 5 minutes.
2. Fill the tank full with clean water, then add cleaning solution*. Flush solution through boom, hoses, and nozzles, then allow to sit for 15 minutes with agitation running; then drain.
3. Repeat Step 2.
4. Repeat Step 1.
5. Nozzles and screens, and should then be removed and cleaned separately. To remove traces of cleaning solution, rinse the tank thoroughly with clean water and flush through hoses and boom.

*Use any of the following cleaning solutions:

1. One gallon ammonia (containing 3% active) per 100 gallons of water.
2. Nutra-sol[1] (carefully read and follow Nutra-sol label directions).
3. Loveland Spray Tank Cleaner[2] (carefully read and follow Loveland Spray Tank Cleaner label directions).
4. Tank-Aid[3] (carefully read and follow Tank-Aid label directions).

To reduce the amount of water required in the above procedure, see separate Du Pont bulletin, "Reduced Volume Cleanout Procedure for Large Sprayers."

NOTE: This sprayer cleanup procedure is only effective for "Telar" and for general uses specified under "Directions for Use"; sprayer should not be used on food crops, feed crops, fine turf, ornamentals and other desirable plants.

STORAGE AND DISPOSAL

STORAGE: Store product in original container only, away from other pesticides, fertilizer, food or feed

PRODUCT DISPOSAL: Do not contaminate water, food or feed by storage or disposal. Wastes resulting from the use of this product may be disposed of on site or at an approved waste disposal facility or on non-crop sites as previously recommended.

CONTAINER DISPOSAL: Triple rinse (or equivalent) the container. Then offer for recycling or reconditioning, or puncture and dispose of in a sanitary landfill, or incineration, or, if allowed by state and local authorities, by burning. If burned, stay out of smoke.

NOTICE TO BUYER: Purchase of this material does not confer any rights under patents of countries outside of the United States.

NOTICE OF WARRANTY

Du Pont warrants that this product conforms to the chemical description on the label thereof and is reasonably fit for purposes stated on such label only when used in accordance with directions under normal use conditions. It is impossible to eliminate all risks inherently associated with the use of this product. Injury to adjacent crops, ineffectiveness or other unintended consequences may result because of such factors as weather conditions, presence of other materials, or the manner of use or application, all of which are beyond the control of Du Pont. In no case shall Du Pont be liable for consequential, special or indirect damages resulting from the use or handling of this product. All such risks shall be assumed by the buyer. **DU PONT MAKES NO WARRANTIES OF MERCHANTABILITY OR FITNESS FOR A PARTICULAR PURPOSE NOR ANY OTHER EXPRESS OR IMPLIED WARRANTY EXCEPT AS STATED ABOVE.**

[1] Nutra-sol is product of Thomas G. Killoil Company, Inc. San Bruno, California

[2] Loveland Spray Tank Cleaner is a registered trademark of Loveland Industries, Inc.

[3] Tank-Aid is manufactured for Corbett Chemical Company

D-090690

BEST AVAILABLE COPY