

[336-29]

J.242-1511-70

REGISTERED

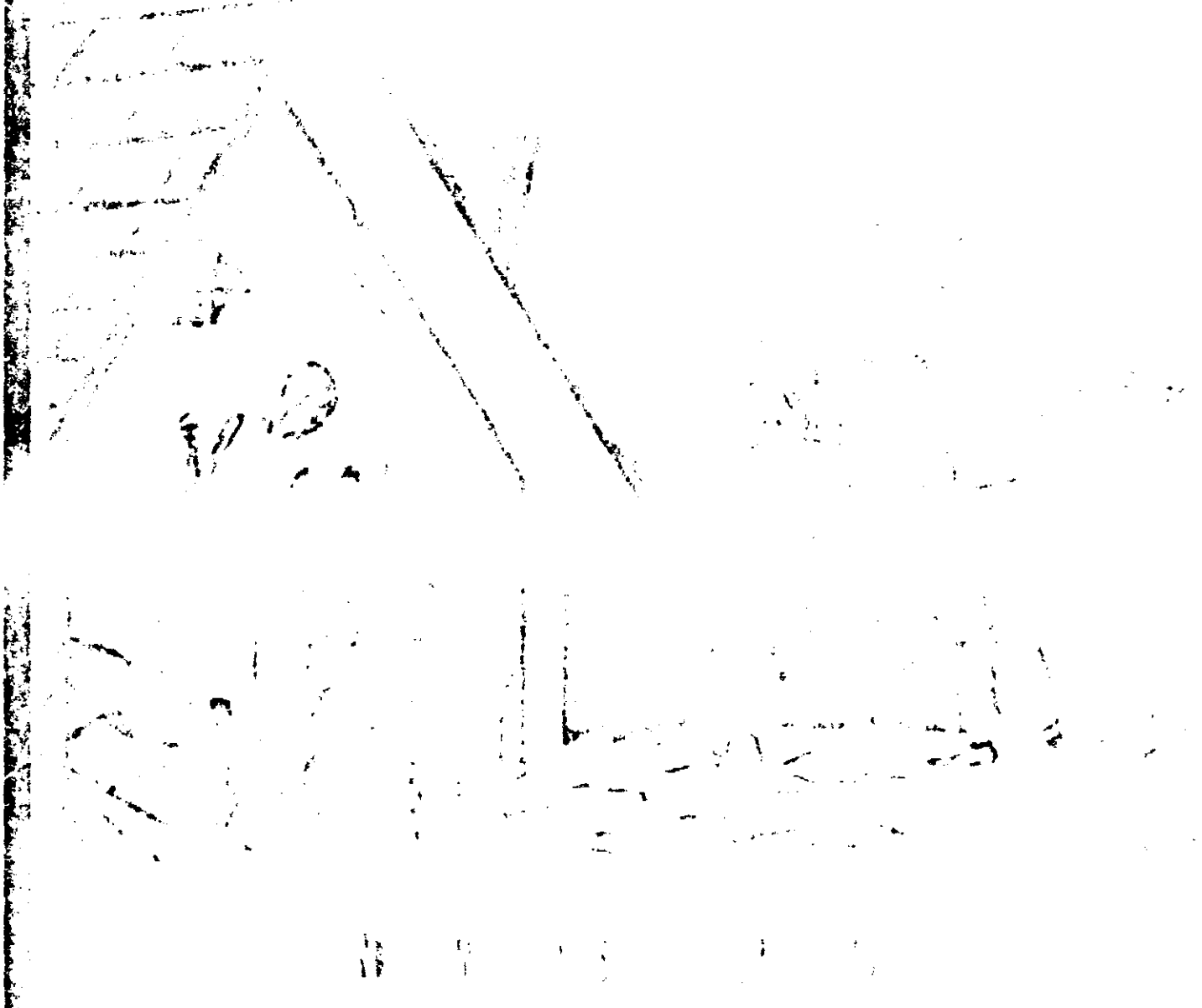
FR. 1271-63

1 TOP DASH CONTL CHGO

ACCEPTED  
JUN 2, 1970  
UNDER THE FEDERAL INSECTICIDE  
FUNGICIDE AND RODENTICIDE ACT  
FOR ECONOMIC POISON REGISTERED  
ED UNDER NO. 336-29 SUBJECT  
TO ATTACHED COMMENTS

Camerman's Note  
Poor Copy

# HOUSE & GARDEN



NON-FLAMMABLE WHEN USED AS DIRECTED

### DIRECTIONS

#### Shake Well Before Using

Hold container upright. Point spray opening away from you and press button. Apply sparingly in short bursts.

### INDOORS

**TO KILL FLIES, MOSQUITOES, GNATS, WASPS, FLYING MOTHS AND SIMILAR SMALL FLYING INSECTS:** Close all doors and windows and direct spray upward into center of room with a slow sweeping motion. Fill room with mist. Keep nozzle 3 feet from surfaces. Keep room closed for 15 minutes after spraying.

**TO KILL ROACHES, WATERBUGS, SILVERFISH, CRICKETS, ANTS, AND CERTAIN OTHER CRAWLING INSECTS:** Spray baseboard, cracks, crevices, moist areas, and openings around sinks and pipes and other hiding places, hitting the insects directly. Spray ant hills and ant trails over window sills and other locations.

**TO KILL CLOTHES MOTHS, CARPET BEETLES:** Spray all articles to be protected, giving particular attention to folds and seams. Spray interior of storage containers such as closets, chests and trunks regularly. Treatment should be repeated every thirty days unless the articles are stored in a moth light container. For control of carpet beetles, apply thoroughly to infested areas of carpets, localized areas of floors and baseboards, and into cracks under carpets, where these pests may be found. Repeat application as often as necessary to maintain effective control.

**FOR HOUSE PLANTS:** Spray in short bursts, holding the can about 18 inches from foliage for such plants as English Ivy and African Violets. Spray both sides of the leaves lightly. Do not wet. Repeat as often as necessary.

### OUTDOORS

For bugs on such plants as Asters, Azaleas, Begonias, Chrysanthemums, Dahlias, Delphiniums, Gladioli, Irises, Marigolds, Petunias, Roses and Snapdragons. Also for bugs on Evergreens and small ornamental deciduous trees, shrubs and vines.

When sprayed directly on insects this spray kills sucking insects such as aphids, leafhoppers, spotted mites, thrips (exposed) and lace bugs. Kills chewing insects such as caterpillars, climbing cutworms and Japanese beetles.

For best results spray in evening or on a cloudy day when air is still. Use a slow sweeping motion. Keep can 18 inches from plants. Avoid wetting foliage with the spray. Spray rows at the rate of 1 foot per second. For heavy growth, spray row on both sides. Repeat when needed. Spray with caution on young plants and new growth. Do not spray garden when temperature exceeds 90 F.

**CAUTION:** Store upright in a cool place (not over 120 F.). Do not place on hot surface. Do not puncture the can. Never throw in fire.

When used as directed but not intended, this product can be used around lawns, shrubs and utensils if they are protected from direct contact during spraying. Avoid inhalation. Do not remain in treated area and ventilate area after treatment. Keep 3 feet away from interior walls, fabrics and furniture. Certain plastic materials and tiles, painted and varnished surfaces and wall paper may have a tendency to discolor, streak or soften when wet with insecticides. Do not spray such materials.

### KEEP OUT OF REACH OF CHILDREN

#### ACTIVE INGREDIENTS:

- Pyrethrins 0.25%
- Piperonyl butoxide, technical 1.60%
- Equivalent to 0.80% (butylcarbityl) (6-propylpiperonyl) ether and 0.20% related compounds
- Isoparaffinic petroleum distillate 1.00%

#### INERT INGREDIENTS

(Contains 0.10% sodium nitrite) 97.75%

WALGREEN LABORATORIES, INC. DISTRIBUTOR,  
CHICAGO, ILL. 60646  
USDA REG. NO. 336-29