

Cameraman's Note

Poor Copy

ACCEPTED  
MAY 20 1972  
UNDER THE PROVISIONS OF THE  
FEDERAL FOOD, DRUG, AND COSMETIC  
ACT FOR ENFORCEMENT UNDER  
ED UNDER...

Government  
334-  
361

For Hospitals, Restaurants  
and Institutions

FOR SPARKING CLEAN OSGO... TOILET  
BOWLS AND URINALS USE ONLY

**DIRECTIONS**

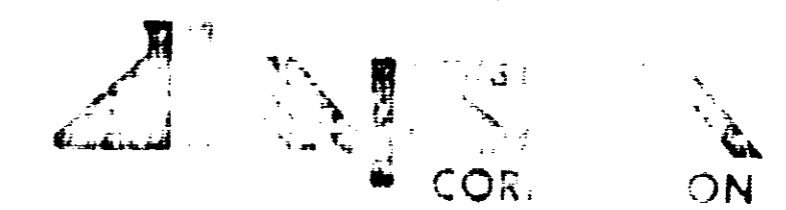
FOR TOILET BOWL AND URINALS...  
CLEANING AND DEGREASING

- A. Flush to remove as much... as possible
- B. Squirt by squeezing bottle... on and
- C. Dip the bowl mop into the... on trap

TO CLEAN DEGREASE AND...  
TOILET PUMPHOUSES

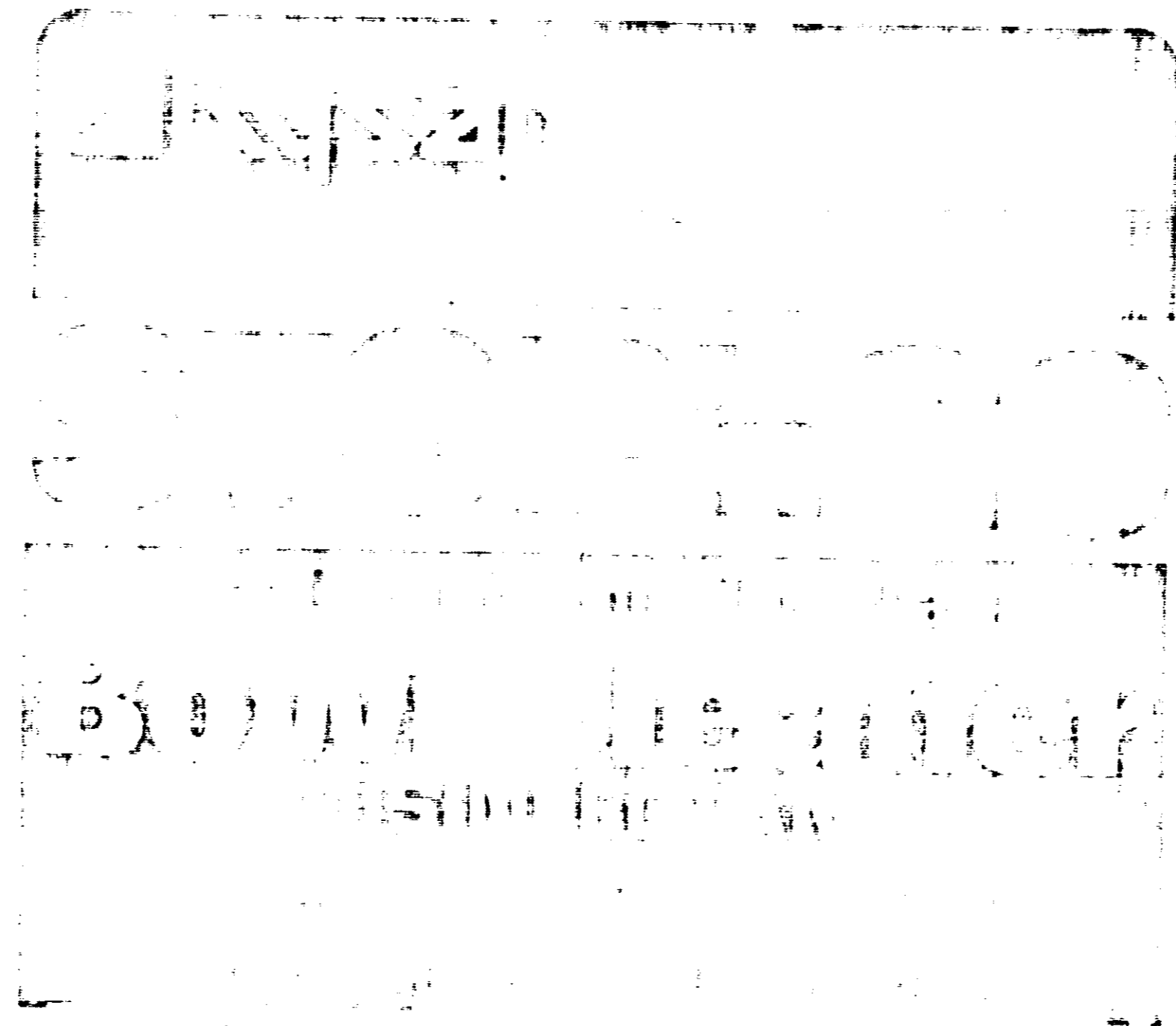
1. Shut off water supply and...
2. Remove cover. Squirt com... into all
3. Scrub all surfaces with v... mop
4. Turn on water supply. R... eplace

Manufactured by



CHICAGO, ILLINOIS

ON  
9



**KEEP OUT OF REACH OF CHILDREN.**  
**CAUSTIC. MAY BE FATAL IF SWALLOWED. DO NOT**  
**INHALE VAPOR OR FUMES. MAY PRODUCE CHEM-**  
**ICAL BURNS. DO NOT GET IN EYES, ON SKIN, OR ON**  
**CLOTHING. SEE ANTIDOTE STATEMENT ON SIDE PANEL.**

Removes Rust, Lime, Hard Water Deposits,  
Grease, Soap Scum and various discolorations  
from toilet bowls, urinals, flush boxes and  
bathtubs when used as directed.  
In case of spillage on textiles or other  
materials should be immediately rinsed  
thoroughly with water.  
Do not use on any surface that can be dam-  
aged by acidic materials. Many porcelain  
surfaces are not resistant to acid.  
Use on all plumbing and septic tanks.  
Contains HYDROGEN CHLORIDE

**ANTIDOTE:**  
**INGESTION**—Call a physician immediately.  
If vomiting occurs, do not induce further  
vomiting. If necessary, give small sips of  
water.

**EYE**—Wash with water for 15  
minutes. Get prompt medical attention. Remove  
contact lenses immediately. Flush the  
eye with water using soap freely, then  
rinse with a weak solution of baking soda.

- ACTIVE INGREDIENTS 9.55%
- Sodium Hypochlorite 9.00%
- Sodium Chloride 3.00% (Cl<sub>2</sub>)
- Sodium Chloride 0.18%
- Sodium Chloride 3.25% (Cl<sub>2</sub>)
- Sodium Chloride 0.18%
- INGREDIENTS 99.54%
- 100.00%

CONTAINS NO PHOSPHORUS COMPOUND  
Reg. No. 334-561 AA

HYSAN - QT. 500 IN 60 (EPA)

ACCEPTED WITH COMMENTS

**DIRECTIONS** - As a Preventative Measure and Aid in disinfecting

**FOR GENERAL CLEANING AND DISINFECTING:**  
Use 1 part DISINFECTANT to 79 parts water. For best results add the water to the DISINFECTANT. This solution will aid in disinfecting and deodorizing Floors, Walls, Woodwork, and similar hard surfaces. Apply solution with a mop, brush, or rag. Thoroughly wet all surfaces.

**TOILET ROOMS:** Use 1 part DISINFECTANT to 79 parts water. Wash bathtub, seats, bowls, urinals, sinks, floors and baseboards with the solution at least once a day. REMOVE RESIDUAL BOWL WATER PRIOR TO APPLYING SOLUTION.

**STEAMSHIPS, AIRSHIPS, RAILROADS and BUSES:** With a solution of 1 part DISINFECTANT to 79 parts water, scrub floors, wipe seats, woodwork, baths, toilets, for cleaning pantries, passageways and cabins.

**SCHOOLS, FACTORIES, INSTITUTIONS, PUBLIC BUILDINGS:**  
Use a solution of 1 part DISINFECTANT to 69 parts water for mopping and spraying all rooms, hallways, stairs, and lockers.

MANUFACTURED BY  
**KYSAN**  
CORPORATION  
CHICAGO, ILLINOIS 60609

# MINTONE

*disinfectant*

**DISINFECTS, CLEANS,  
AND DEODORIZES**

|                                   |        |                                |       |
|-----------------------------------|--------|--------------------------------|-------|
| <b>ACTIVE INGREDIENTS: 42.61%</b> |        |                                |       |
| Isopropyl Alcohol                 | 25.00% | Ortho-benzyl-para-Chlorophenol | 1.15% |
| Soap                              | 6.00%  | Tetrasodium Ethylenediamine    |       |
| Terpineol                         | 4.00%  | Tetraacetate                   | 0.09% |
| 4-and 6-chloro-2-phenylphenol     | 3.67%  |                                |       |
| Methyl Salicylate                 | 2.70%  |                                |       |
| <b>INERT INGREDIENTS: 57.39%</b>  |        |                                |       |
| <b>100.00%</b>                    |        |                                |       |

## WARNING:

**KEEP OUT OF REACH OF CHILDREN  
MAY BE HARMFUL IF SWALLOWED**

SEE SIDE PANEL FOR FIRST AID AND OTHER PRECAUTIONS.

**FOOD PROCESSING PLANTS:** Use in toilets and dressing rooms only. Use 1 part disinfectant to 79 parts water.

**TO DEODORIZE CARRAGE CANS, REFUSE PAILS, CELLARS, RUBBISH PILES, OUTDOOR CLOSETS:**  
Thoroughly saturate by sprinkling or spraying with a solution of 1 part DISINFECTANT to 59 parts water.

**WARNING:**  
KEEP OUT OF REACH OF CHILDREN. Causes eye or skin irritation. Do not get in eyes, on skin or on clothing. Harmful if swallowed. Avoid contamination of food. Avoid prolonged breathing of spray mist.

**FIRST AID:**  
In case of contact, immediately flush eyes or skin with plenty of water for at least 15 minutes. For eyes, call a physician. Remove and wash contaminated clothing before reuse.

If swallowed, drink promptly a large quantity of milk, egg whites, gelatin solution or if these are not available, drink large quantities of water. Avoid alcohol. Call a physician.

Do not use, pour, spill or store near heat or open flame. Rinse empty container thoroughly with water and discard it.

**NET: GAL**

**EPA Reg. No. 334-374 AA**