

Reg # 334-355

PM-10

191

DIRECTIONS FOR USE

Remove protective cap. Aim spray opening away from person. Push button to spray.

FOR HOUSEFLIES, MOSQUITOES, AND GNATS: Close all doors and windows. Point nozzle upward, direct spray mist to all parts of the room, especially windows and other light sources which attract these insects. Fill the room with mist, then leave the treated area. Keep the room closed for at least 15 minutes. Ventilate the room when treatment is completed.

WASPS: Application should be made in late evening when insects are at rest. Spray liberally into hiding and breeding places, contacting as many insects as possible. Repeat as necessary.

FOR CRAWLING INSECTS: Roaches, earwigs, grain mites, sowbugs, spiders and centipedes: Spray thoroughly into hiding places such as cracks, crevices, moist areas, openings around pipes and sinks, under refrigerators, baseboards, and storage areas. Spray directly on insect where possible.

ANTS: Spray trails, nests and points of entry. Spray on ants where possible. Repeat as necessary.

OUTDOORS— TO PROTECT ORNAMENTAL PLANTS: To control: aphids, exposed thrip, adult white flies, leafhoppers, two spotted mites, plant bugs, spittlebugs and Japanese beetle on smaller rhododendrons, pines, spruce, hemlock, spirea, dogwood, palm, mimosa, toyon, viburnum, euonymus, oaks, maples, locust, forsythia and althea; and mimosa webworm larvae on mimosa, spray directly on insects. Hold container 18 inches from the infested plants. Spray in short spray bursts of one to three seconds or spray at the rate of one linear foot of growth per second. Direct spray to all sides covering foliage until slightly moist. Avoid heavy wetting. Repeat as necessary to obtain control.

Spray peonies, iris, zinnia, snapdragons, ageratums, chrysanthemums, nasturtiums, daisy, geraniums, marigolds, daphne, fatshe-dra, ivy, tobira, queen sago and broad leaf acacia for control of aphids, exposed thrips, adult white flies, leafhoppers, two-spotted spittlebugs and Japanese beetles. Spray as directed above.

ACTIVE INGREDIENTS: 0.616%
*†(5-Benzyl-3-furyl) methyl 2,2-dimethyl-3-(2-methylpropenyl) cyclopropane-carboxylate 0.250%
Related compounds 0.034%
Aromatic petroleum hydrocarbons 0.332%

INERT INGREDIENTS: 99.384%
TOTAL **100.000%**

*Cis/trans isomers ratio: max. 30% (±) cis and min. 70% (±) trans
†U.S. Patent No. 3,465,007

CAUTIONS

KEEP OUT OF REACH OF CHILDREN

Avoid contamination of feed and foodstuffs. Foods should be removed or covered during treatment. All food processing surfaces should be covered during treatment or thoroughly cleaned before using. When using the product as a space spray in these areas, apply only when plant is not in operation. Cover fish bowls and remove birds for 1 hour when spraying rooms.

WARNING

Cont. under pressure. Do not puncture. Do not use or store near heat or open flame. Exposure to temperatures above 130°F may cause bursting. Never throw container into fire or incinerator.

EPA Reg. No. 334-355AA EPA Est. No. 334-IL-2

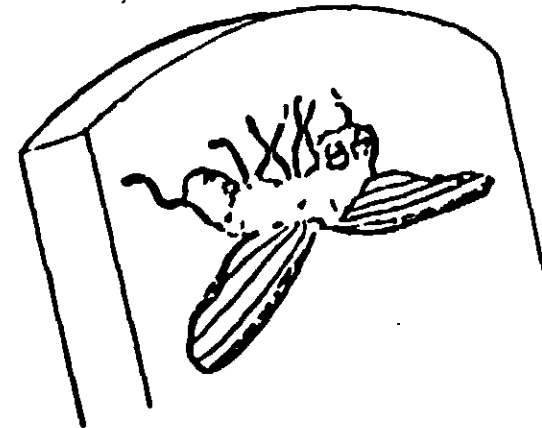
SMITE 25
PRESSURIZED SPRAY INSECTICIDE

For Controlling the Following Flying and Crawling Insects:
HOUSEFLIES, MOSQUITOES, GNATS, WASPS, ROACHES, ANTS, EARWIGS, SPIDERS, GRAIN MITES, SOWBUGS AND CENTIPEDES.

FOR USE IN:

FOOD PROCESSING PLANTS ★ FOOD MARKETS ★ UTILITY ROOMS
RESTAURANTS ★ TAVERNS ★ STORES ★ KITCHENS ★ BAKERIES
CAFETERIAS ★ LOCKER ROOMS ★ WASHROOMS ★ HOSPITALS
PORTERS' CLOSETS ★ HOTELS ★ BOTTLING PLANTS ★ CANNERIES

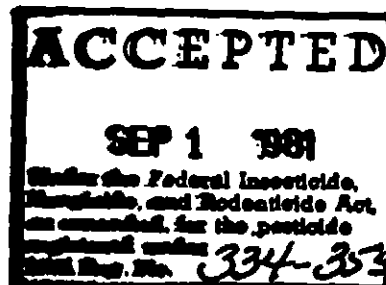
....and other places where foods are processed and prepared.



NET WT. 17.6 OZ. (1 lb. 1.6 oz.)

KEEP OUT OF REACH OF CHILDREN

CAUTION:
CONTENTS UNDER PRESSURE
SEE BACK PANEL FOR FURTHER CAUTIONS



Manufactured By
KYSAN
CORPORATION, CHICAGO, ILLINOIS 60609