

EPA-3557

**FOR USE IN:** Restaurants, Taverns, Stores, Kitchens, Bakeries, Cafeterias, Canneries, Locker Rooms, Utility Rooms, Food Markets, Food Processing Plants, Washrooms, Porters' Closets, Hospitals, Hotels, Bottling Plants, and other places where foods are processed and prepared.

**DIRECTIONS FOR USE**

Remove protective cap. Aim spray opening away from person. Push button to spray.

**For houseflies, mosquitoes, and gnats:** Close all doors and windows. Point nozzle upward, direct spray mist to all parts of the room, especially windows and other light sources which attract these insects. Fill the room with mist, then leave the treated area. Keep the room closed for at least 15 minutes. Ventilate the room when treatment is completed.

**Wasps:** Application should be made in late evening when insects are at rest. Spray liberally into hiding and breeding places, contacting as many insects as possible. Repeat as necessary.

**For crawling insects:** Roaches, earwigs, grain mites, sowbugs, spiders and centipedes: Spray thoroughly into hiding places such as cracks, crevices, moist areas, openings around pipes and sinks, under refrigerators, baseboards, and storage areas. Spray directly on insect where possible.

**Ants:** Spray trails, nests and points of entry. Spray on ants where possible. Repeat as necessary.

<b>Active Ingredients:</b> .....	0.616%
*†(5-Benzyl-3-furyl) methyl 2,2-dimethyl-3-(2-methylpropenyl) cyclopropanecarboxylate	0.250%
Related compounds .....	0.034%
Aromatic petroleum hydrocarbons .....	0.332%
<b>Inert Ingredients:</b> .....	99.384%
	100.000%

\*Cis/trans isomers ratio: max. 30%(±)cis and min. 70%(±)trans.  
†U.S. Patent No. 3,465,007

**CAUTIONS**

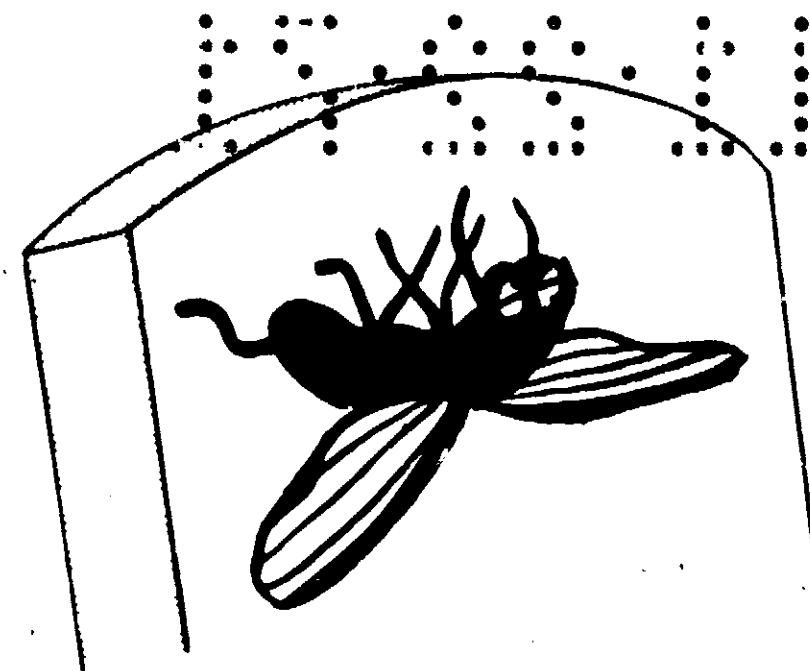
**KEEP OUT OF REACH OF CHILDREN.**

Avoid contamination of feed and foodstuffs. Foods should be removed or covered during treatment. All food processing surfaces should be covered during treatment or thoroughly cleaned before using. When using the product as a space spray in these areas, apply only when plant is not in operation. Cover fish bowls and remove birds for 1 hour when spraying rooms.

**WARNING**

Contents under pressure. Do not puncture. Do not use or store near heat or open flame. Exposure to temperatures above 130° Fahrenheit may cause bursting. Never throw container into fire or incinerator.

# SMITE 25



## PRESSURIZED SPRAY INSECTICIDE

**For Controlling the Following  
Flying and Crawling Insects:**  
**HOUSEFLIES, MOSQUITOES, GNATS,  
WASPS, ROACHES, ANTS, EARWIGS,  
SPIDERS, GRAIN MITES, SOWBUGS  
AND CENTIPEDES.**

**CAUTION:**  
**KEEP OUT OF REACH OF CHILDREN**  
**CONTENTS UNDER PRESSURE**

SEE BACK PANEL FOR FURTHER CAUTIONS.

EPA Reg. No. 334-355 AA

Net Wt. 17.6oz. (1lb. 1.6oz.)

MANUFACTURED BY  
**KYSAN**  
CORPORATION  
CHICAGO, ILLINOIS 60609

ACCEPTED  
12-3-71  
UNDER THE FEDERAL INSECTICIDE  
FUNGICIDE AND RODENTICIDE ACT  
FOR ECONOMIC POISON REGISTER  
ED UNDER NO.

081371