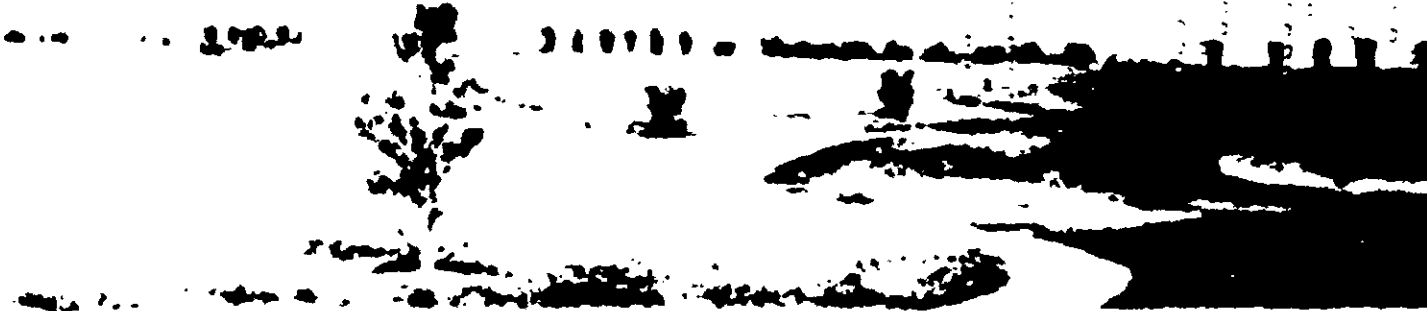


ACCEPTED
MAR 10, 1970
 UNDER THE FEDERAL RESISTANCE
 FUNGICIDE AND HERBICIDE ACT
 FOR ECONOMIC POISON REGISTERED
 UNDER NO. 334-254

GCC-531

GROUNDS CONTROL CHEMICALS



GENERAL INFORMATION:

This product, a selective Weed Killer for Lawn grasses is a new post-emergence herbicide especially formulated for use on turf-grass for selective control of many broadleaf weeds commonly growing in lawns without injury to desirable grasses. This chemical may be used on all types of turf where some of our other products are recommended including Merion, Kentucky Blue Grasses, Bermuda, fescues and rye grasses. (This product has been used successfully on bentgrasses; however, it should not be used unless prior tests have shown it to be non-damaging under the particular conditions of use. To eradicate broadleaf weeds, it is better to use an other of our recommended selective weed killers for Fine Lawn Grasses.)

NOTE: MCPP acts more slowly than 2,4-D, so that some weeds will be controlled before others. Allow 3 to 4 weeks for complete weed killing action to occur.

WEEDS CONTROLLED:

Barnyard Grass	Lambsquarters	Red Clover
Crabgrass	Wallow	Red Sorrel
Common Chickweed	Mouse ear Chickweed	Stitchwort
Field Bindweed	Morning Glory	Speedwell
Field Bindweed	Pigweed	White Clover
English Daisy	Plantain	Wild Garlic
Ground Ivy	Purslane	Wild Onion
Ragweed	Ragweed	Yarrow

DIRECTIONS FOR USE:

Amount to Apply	Per 1,000 Sq Feet	Per Acre
Low Rate	4 Fl Oz	5 Quarts
High Rate	5 Fl Oz	6 Quarts

* High rate for weeds marked with an asterisk (*) in the above list.

MIXING AND APPLYING:

Mix with water using 2 to 4 gallons water per 100 sq ft (2 to 4 quarts per acre). Apply by means of a sprayer or watering can. Give uniform coverage. Repeat applications may be necessary, especially with heavy infestation of the less susceptible weeds indicated with an asterisk (*) in the above list.

NET CONTENTS

GALLONS

**Controls many turf and lawn broadleaf weeds
 and surface-creeping broadleaf weeds
 without injury to most ornamental lawn grasses.**

ACTIVE INGREDIENTS:

Dimethylamine salt of 2-(2-methyl-4-chlorophenoxy) propionic acid* 16.2%
 Dimethylamine salt of 2,4-dichlorophenoxyacetic acid* 16.1%

INERT INGREDIENTS:

67.7%
 *Equivalent to 10.93% of 2-(2-methyl-chlorophenoxy) propionic acid or 1.0 lbs. MCPP acid per gallon. Equivalent to 10.93% 2,4-dichlorophenoxyacetic acid or 1.0 lbs. 2,4-D per gallon.

CAUTION: KEEP OUT OF REACH OF CHILDREN

Avoid contact with skin, eyes or clothing. Avoid inhaling spray mist. Avoid spray drift to susceptible plants as this product may injure grapes, tomatoes, beans, peas, other vegetables, legumes, ornamentals, etc. (Coarse sprays are less likely to drift.) Because of danger of contamination, do not use same spray equipment for applying insecticides, etc. Do not re-use shipping containers. Destroy by crushing and burying, where possible. Do not transport with or store near seeds, fertilizers, insecticides or fungicides. Do not use in or around greenhouses. Avoid contamination of water intended for irrigation or domestic purposes. Store at temperatures above 32 F. If allowed to freeze, thaw and re-mix before using. Keep out of reach of children. Do not store with foodstuffs. After using, wash hands and other parts of the body contaminated with concentrate, spray or washings.

Do NOT Store With Foodstuffs

MANUFACTURED BY

Hyson PRODUCTS

919 West 38th Street Chicago, Illinois 60609

Either before or after application, it is wise to properly fertilize the lawn so as to encourage the lawn to heal rapidly as possible, filling in the bare areas where the weeds have died away. Once the weeds have been removed, the bare areas should be reseeded. Bare areas may be reseeded 3 to 4 weeks after application.

NOTE: MCPP acts more slowly than 2,4-D, so that some weeds will be controlled before others.

WHEN TO APPLY:

Apply in spring, or fall, when weeds are actively growing. Knotweed is controlled more easily in spring or early summer, when weeds are young.

PRECAUTIONS: Do not apply when turf is suffering from drought conditions or during very hot weather or damage to grass may result. Do not mow for several days before or after application. Withhold sprinkling for 24 hours after application. Do not apply during periods of heavy rainfall. Do not use on newly seeded areas. Do not use if you want clover in your turf. In some areas bentgrasses, carpet, buffalo and St. Augustine grasses may be injured; therefore do not use on turf where these grasses predominate.

Local conditions may affect the use of this chemical. Consult competent state or local turf or weed specialists for specific recommendations as to dosage and time of application, and for control of other weeds.

CLEANING OF EQUIPMENT AFTER USE:

It is difficult to clean out 2,4-D and MCPP completely from sprayers and other equipment, therefore, do not use sprayers and other equipment for purposes where even trace amounts of these chemicals may cause injury. If this cannot be done, the following suggestions are made for steel tanks:

Flush equipment thoroughly, immediately after use, with water. Fill tank with water, add an alkaline material and mix. The following materials are satisfactory and may be used:

- (1) 1 qt. of household ammonia to 25 gals. of water, or
- (2) 2 lbs. of Soda Ash per 100 gallons water.

Spray out small amount of solution and leave remainder in tank from 18 to 24 hours. Drain and rinse several times, spraying small quantities through nozzles each time.

U.S.D.A. Reg. No. 334-254

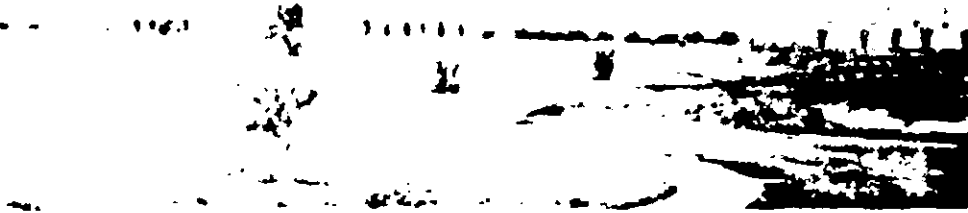
ACCEPTED
 MAR 10, 1970

This product is a selective weed killer for lawn grasses. It is a post-emergent herbicide especially formulated for use on turf-grass for selective control of many broadleaf weeds commonly growing in lawns without injury to desirable grasses. This chemical may be used on all types of turf where some of our other products are recommended including *Mexican, Kentucky Blue Grasses, Bermuda, Texas and rye grasses.* (This product has been used successfully on bentgrasses however, it should not be used unless prior tests have shown it to be non-damaging under the particular conditions of use. To eradicate or reduce weeds, it is better to use one of our recommended selective weed killers for Fine Lawn Grasses.)

ALL INFORMATION CONTAINED HEREIN IS UNCLASSIFIED
 DATE 10/15/2011 BY 60322 UCBAW/BJS

GCC-531

GROUNDS CONTROL CHEMICALS



Controls many turf and lawn broadleaf weeds
 and surface-creeping broadleaf weeds
 without injury to most ornamental lawn grasses.

ACTIVE INGREDIENTS

Diquat dibromide 20.00%
 Diquat dibromide 20.00%
 Diquat dibromide 20.00%

INERT INGREDIENTS

Water 70.00%
 Water 70.00%
 Water 70.00%

CAUTION: KEEP OUT OF REACH OF CHILDREN

Do NOT Store With Foodstuffs

MADE IN U.S.A.
Hyson PRODUCTS

919 West 38th Street Chicago, Illinois 60609

GCC-531

GROUNDS CONTROL CHEMICALS

Controls many turf and lawn broadleaf weeds
and surface-creeping broadleaf weeds
without injury to most ornamental lawn grasses.

ACTIVE INGREDIENTS:

Dimethylamine salt of 2-(2-methyl-4-chlorophenoxy) propionic acid*	16.2%
Dimethylamine salt of 2,4-dichlorophenoxyacetic acid*	16.1%
	67.7%

INERT INGREDIENTS:

*Equivalent to 10.93% of 2-(2-methyl-4-chlorophenoxy) propionic acid or 1.0 lbs. MCPP acid per gallon. †Equivalent to 10.93% 2,4-dichlorophenoxyacetic acid or 1.0 lbs. 2,4-D per gallon.

CAUTION: KEEP OUT OF REACH OF CHILDREN

Avoid contact with skin, eyes or clothing. Avoid inhaling spray mist. Avoid spray drift to susceptible plants as this product may injure grapes, tomatoes, beans, peas, other vegetables, legumes, ornamentals, etc. (Coarse sprays are less likely to drift.) Because of danger of contamination, do not use same spray equipment for applying insecticides, etc. Do not re-use shipping containers. Destroy by crushing and burying, where possible. Do not transport with or store near seeds, fertilizers, insecticides or fungicides. Do not use in or around green houses. Avoid contamination of water intended for irrigation or domestic purposes. Store at temperatures above 32°F. If allowed to freeze, thaw and re-mix before using. Keep out of reach of children. Do not store with foodstuffs. After using, wash hands and other parts of the body contaminated with concentrate, spray or washing.

Do NOT Store With Foodstuffs

MANUFACTURED BY

Hyson PRODUCTS

919 West 38th Street Chicago, Illinois 60609

Either before or after application, it is wise to properly fertilize the lawn so as to encourage the lawn to heal rapidly as possible, filling in the bare areas where the weeds have died away. Once the weeds have been removed, the bare areas should be reseeded. Bare areas may be reseeded 3 to 4 weeks after application.

NOTE: MCPP acts more slowly than 2,4-D, so that some weeds will be controlled before others.

WHEN TO APPLY:

Apply in spring, or fall, when weeds are actively growing. Knotweed is controlled more easily in spring or early summer, when weeds are young.

PRECAUTIONS: Do not apply when turf is suffering from drought conditions or during very hot weather or damage to grass may result. Do not mow for several days before or after application. Withhold sprinkling for 24 hours after application. Do not apply during periods of heavy rainfall. Do not use on newly seeded areas. Do not use if you want clover in your turf. In some areas bentgrasses, carpet, buffalo and St. Augustine grasses may be injured; therefore do not use on turf where these grasses predominate.

Local conditions may affect the use of this chemical. Consult competent state or local turf or weed specialists for specific recommendations as to dosage and time of application, and for control of other weeds.

CLEANING OF EQUIPMENT AFTER USE:

It is difficult to clean out 2,4-D and MCPP completely from sprayers and other equipment, therefore, do not use sprayers and other equipment for purposes where even trace amounts of these chemicals may cause injury. If this cannot be done, the following suggestions are made for steel tanks:

Flush equipment thoroughly, immediately after use, with water. Fill tank with water, add an alkaline material and mix. The following materials are satisfactory and may be used:

- (1) 1 qt. of household ammonia to 25 gals. of water, or
- (2) 2 lbs. of Soda Ash per 100 gallons water.

Spray out small amount of solution and leave remainder in tank from 18 to 24 hours. Drain and rinse several times, spraying small quantities through nozzles each time.

U.S.D.A. Reg. No. 334-254